

CABLE ANCHOR BRACKET



FPA03

SHEET NO.

DATE:

1 of 4

9/9/2011

SPECIFICATIONS

The cable anchor bracket shall be manufactured from galvanized steel plate conforming to AASHTO M270M (ASTM A709M) Grade 250 steel or ASTM A36/A36M steel and zinc-coated according to AASHTO M111 (ASTM A123) except when corrosion resistant steel is requested. The cable anchor bracket shall be welded with E60xx rod. The bracket consists of one base plate, two side gussets, one center gusset, one top gusset, and one keeper plate.

After the bracket assembly is welded and holes are cut or punched the component should be zinc-coated according to AASHTO M111 (ASTM A123).

Dimensional tolerances not shown or implied are intended to be those consistent with the proper functioning of the part, including its appearance and accepted manufacturing practices.

INTENDED USE

The cable anchor bracket is used with the portable concrete barrier termination (SWC17). The cable anchor bracket is bolted to the anchor bracket base with six FBX20b bolts with nuts and twelve FWC20a plain round washers. The offset and inline BCT cable anchor assemblies (FCA03 and FCA04, respectively) are fastened to the bracket keeper plate with 1" [25] diameter heavy hex nuts and washers.

CONTACT INFORMATION

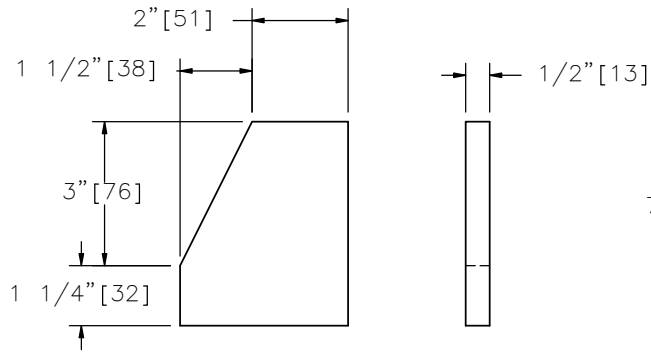
Midwest Roadside Safety Facility
Nebraska Transportation Center
University of Nebraska-Lincoln
2200 Vine Street
130 Whittier Research Center
Lincoln, NE 68583-0965
(402) 472-0965
Email: mwrfsf@unl.edu
Website: <http://mwrfsf.unl.edu>

CABLE ANCHOR BRACKET

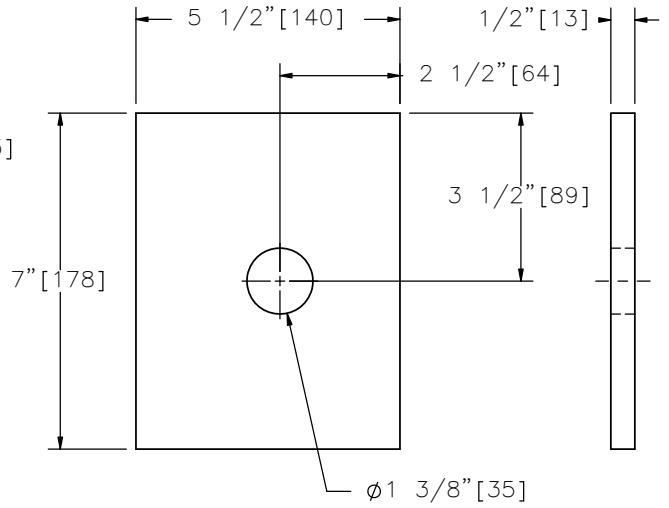
FPA03



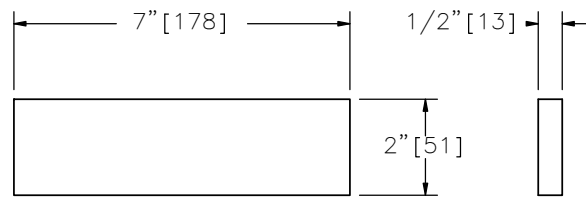
SHEET NO.	DATE:
2 of 4	9/9/2011



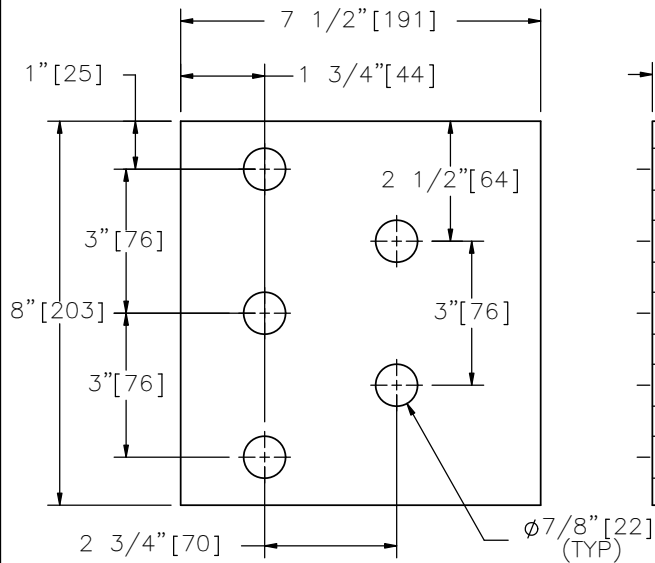
ANCHOR BRACKET SIDE GUSSET



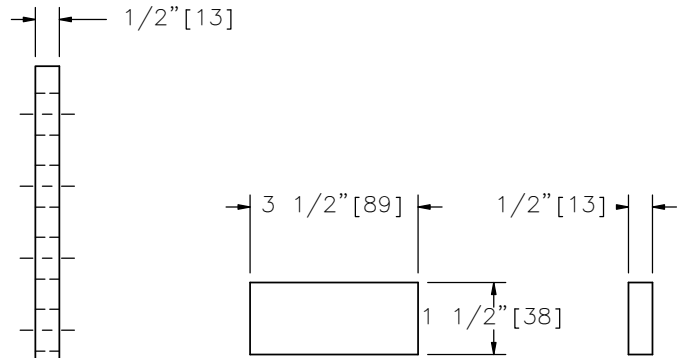
ANCHOR BRACKET KEEPER PLATE



ANCHOR BRACKET TOP GUSSET



ANCHOR BRACKET BASE PLATE



ANCHOR BRACKET CENTER GUSSET

CABLE ANCHOR BRACKET



FPA03

SHEET NO.

DATE:

3 of 4

9/9/2011

THIS PAGE INTENTIONALLY LEFT BLANK

CABLE ANCHOR BRACKET

FPA03

SHEET NO.

DATE:

4 of 4

9/9/2011

