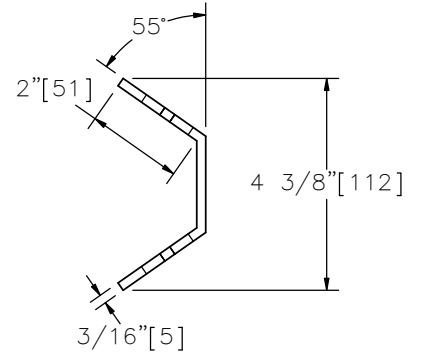
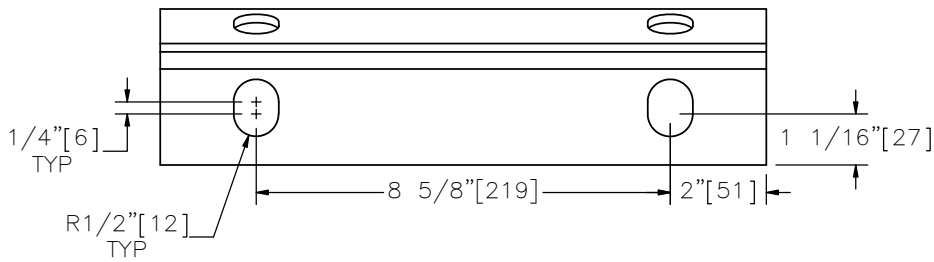


FRONT VIEW



SIDE VIEW



PERPENDICULAR TO SLOTS

NOSE CABLE ANCHOR PLATE



FPA04

SHEET NO.

DATE:

1 of 2

4/16/2013

## SPECIFICATIONS

The nose cable anchor plate shall be formed from ASTM A36 steel plate and zinc-coated according to AASHTO M111 (ASTM 123) except when corrosion resistant steel is requested. No punching, drilling or cutting is permitted after the anchor plate is zinc coated. When corrosion resistant steel is desired, the bracket shall not be painted or zinc-coated.

Dimensional tolerances not shown or implied are intended to be those consistent with the proper functioning of the part, including its appearance and accepted manufacturing practices.

## INTENDED USE

The nose cable anchor plate is used in SET03a-b, three-beam bullnose end terminal.

## CONTACT INFORMATION

Midwest Roadside Safety Facility  
Nebraska Transportation Center  
University of Nebraska-Lincoln  
130 Whittier Research Center  
2200 Vine Street  
Lincoln, NE 68583-0853  
(402) 472-0965  
Email: [mwrsf@unl.edu](mailto:mwrsf@unl.edu)  
Website: <http://mwrsf.unl.edu>

## NOSE CABLE ANCHOR PLATE

FPA04



SHEET NO.

DATE:

2 of 2

4/16/2013