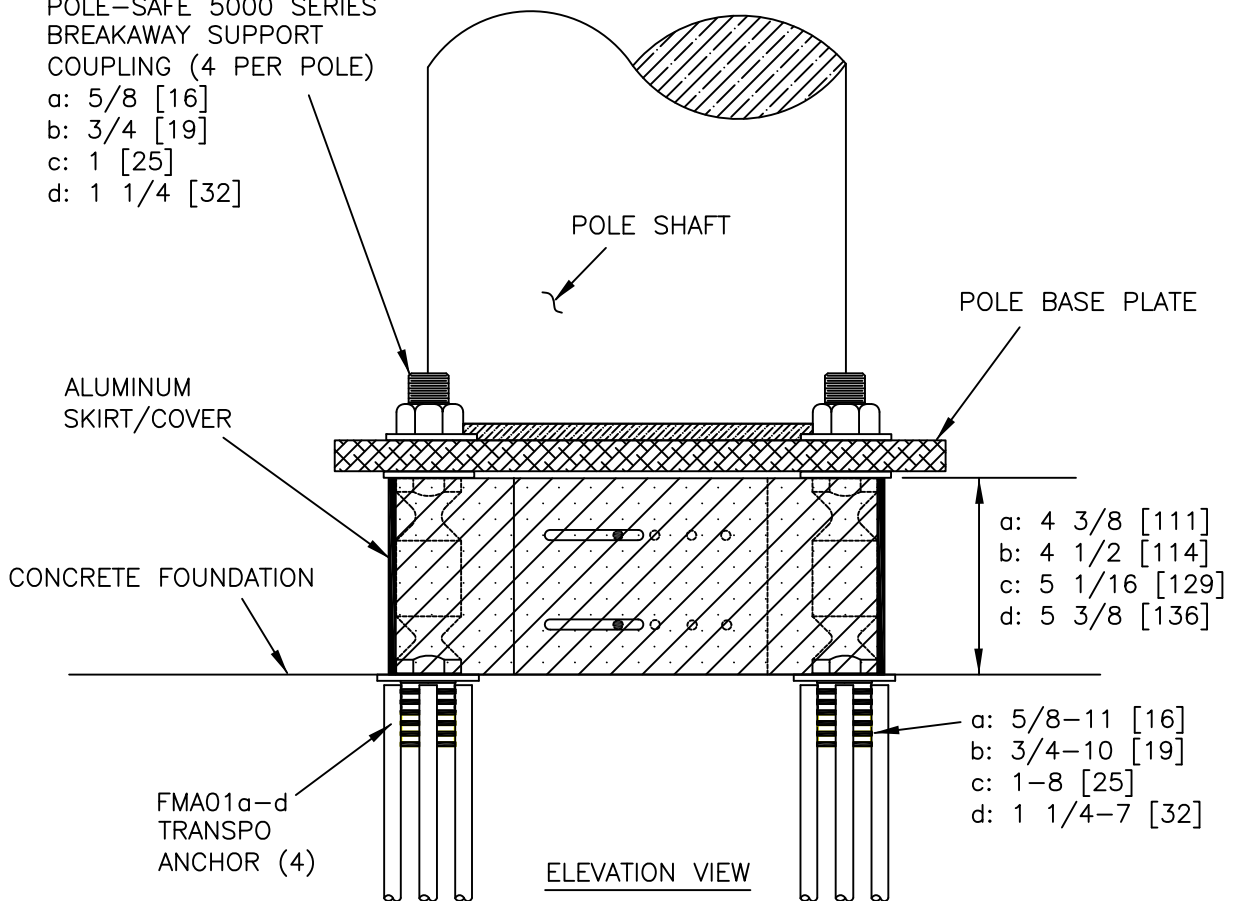


PLAN VIEW

POLE-SAFE 5000 SERIES
BREAKAWAY SUPPORT
COUPLING (4 PER POLE)

- a: 5/8 [16]
- b: 3/4 [19]
- c: 1 [25]
- d: 1 1/4 [32]



ELEVATION VIEW

POLE-SAFE[®] 5000 SERIES COUPLING BASE



LBC03a-d

SHEET NO.

DATE:

1 of 4

12/01/10

INTENDED USE

Transpo's Pole-Safe[®] 5000 Series coupling base is an omni-directional breakaway support system for a wide variety of light poles and other elements located within roadside clear zones or other locations vulnerable to vehicular impacts. The primary component of the system is a high-strength coupling, designed to break away quickly and cleanly upon impact, thus saving lives and reducing property damage costs. Pole-Safe[®] has been vehicle crash-tested in accordance with NCHRP Report 350 Test Level 3, and is approved for use on all FHWA-funded projects.

In addition to superior safety performance, Pole-Safe[®] provides high structural load-carrying capacity. Extensive finite-element analysis and simulated wind-load testing has been used to optimize the system for maximum loading conditions.

The Pole-Safe[®] 5000 Series consists of four (4) models of different coupling sizes to cover a wide range of pole sizes and configurations, up to and including the heaviest pole mass allowed (992 lbs [450 kg]) in the AASHTO Standard Specifications for Structural Supports for Highway Signs, Luminaires and Traffic Signals.

Pole-Safe[®] 5000 Series offers the advantage of using Transpo Anchors, which are ferrule inserts that provide reduced breakaway stub height, and eliminate bent anchor bolts after impacts.

Below are the Pole-Safe[®] 5000 Series Models with corresponding Transpo Anchor size:

Pole-Safe[®] Model 5062 for use with 5/8" [16] Transpo Anchors.

Pole-Safe[®] Model 5075 for use with 3/4" [19] Transpo Anchors.

Pole-Safe[®] Model 5100 for use with 1" [25] Transpo Anchors.

Pole-Safe[®] Model 5125 for use with 1 1/4" [32] Transpo Anchors (special order).

Each model is a complete base system that contains four (4) Pole-Safe[®] breakaway couplings, and all related hardware shown. The reinforced concrete foundation, pole, and base plate are not included.

REFERENCES

Dwight A. Horne, "Breakaway Luminaire Supports, Geometric and Roadside Design Acceptance Letter Number LS-45B, Federal Highway Administration, January 16, 1997.

CONTACT INFORMATION

Transpo Industries, Inc.
20 Jones Street, New Rochelle, NY 10801
Phone: (914) 636-1000
Fax: (914) 636-1282
Email: info@transpo.com
Web: www.transpo.com

POLE-SAFE[®] 5000 SERIES COUPLING BASE

LBC03a-d

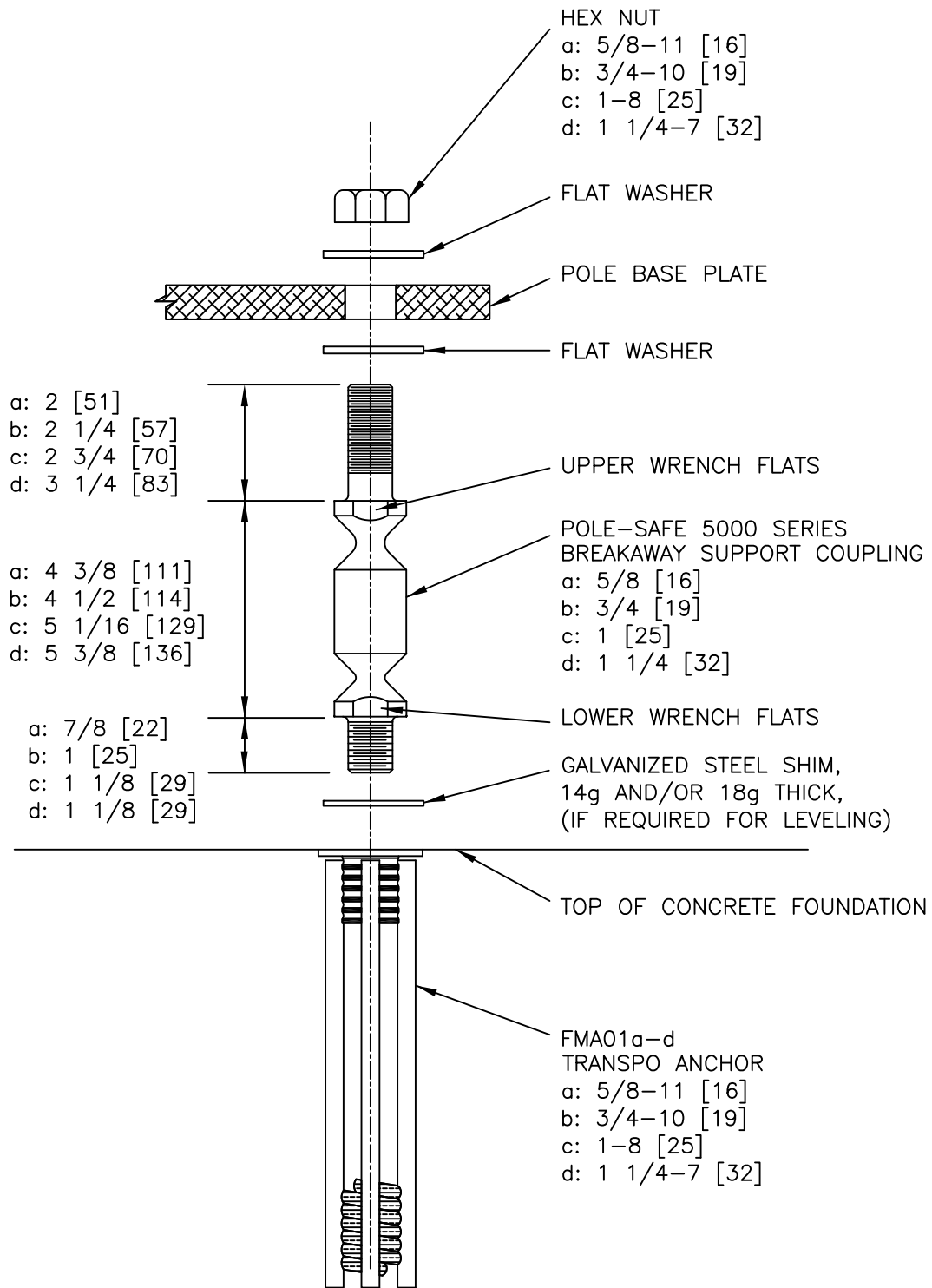
SHEET NO.

DATE

2 of 4

12/01/10





COUPLING ASSEMBLY DETAILS
(4 PER POLE)

POLE-SAFE[®] 5000 SERIES COUPLING BASE



LBC03a-d

SHEET NO.	DATE:
3 of 4	12/01/10

INTENDED USE

Transpo's Pole-Safe[®] 5000 Series coupling base is an omni-directional breakaway support system for a wide variety of light poles and other elements located within roadside clear zones or other locations vulnerable to vehicular impacts. The primary component of the system is a high-strength coupling, designed to break away quickly and cleanly upon impact, thus saving lives and reducing property damage costs. Pole-Safe[®] has been vehicle crash-tested in accordance with NCHRP Report 350 Test Level 3, and is approved for use on all FHWA-funded projects.

In addition to superior safety performance, Pole-Safe[®] provides high structural load-carrying capacity. Extensive finite-element analysis and simulated wind-load testing has been used to optimize the system for maximum loading conditions.

The Pole-Safe[®] 5000 Series consists of four (4) models of different coupling sizes to cover a wide range of pole sizes and configurations, up to and including the heaviest pole mass allowed (992 lbs [450 kg]) in the AASHTO Standard Specifications for Structural Supports for Highway Signs, Luminaires and Traffic Signals.

Pole-Safe[®] 5000 Series offers the advantage of using Transpo Anchors, which are ferrule inserts that provide reduced breakaway stub height, and eliminate bent anchor bolts after impacts.

Below are the Pole-Safe[®] 5000 Series Models with corresponding Transpo Anchor size:

Pole-Safe[®] Model 5062 for use with 5/8" [16] Transpo Anchors.

Pole-Safe[®] Model 5075 for use with 3/4" [19] Transpo Anchors.

Pole-Safe[®] Model 5100 for use with 1" [25] Transpo Anchors.

Pole-Safe[®] Model 5125 for use with 1 1/4" [32] Transpo Anchors (special order).

Each model is a complete base system that contains four (4) Pole-Safe[®] breakaway couplings, and all related hardware shown. The reinforced concrete foundation, pole, and base plate are not included.

REFERENCES

Dwight A. Horne, "Breakaway Luminaire Supports, Geometric and Roadside Design Acceptance Letter Number LS-45B, Federal Highway Administration, January 16, 1997.

CONTACT INFORMATION

Transpo Industries, Inc.
20 Jones Street, New Rochelle, NY 10801
Phone: (914) 636-1000
Fax: (914) 636-1282
Email: info@transpo.com
Web: www.transpo.com

POLE-SAFE[®] 5000 SERIES COUPLING BASE

LBC03a-d

SHEET NO.

DATE

4 of 4

12/01/10

