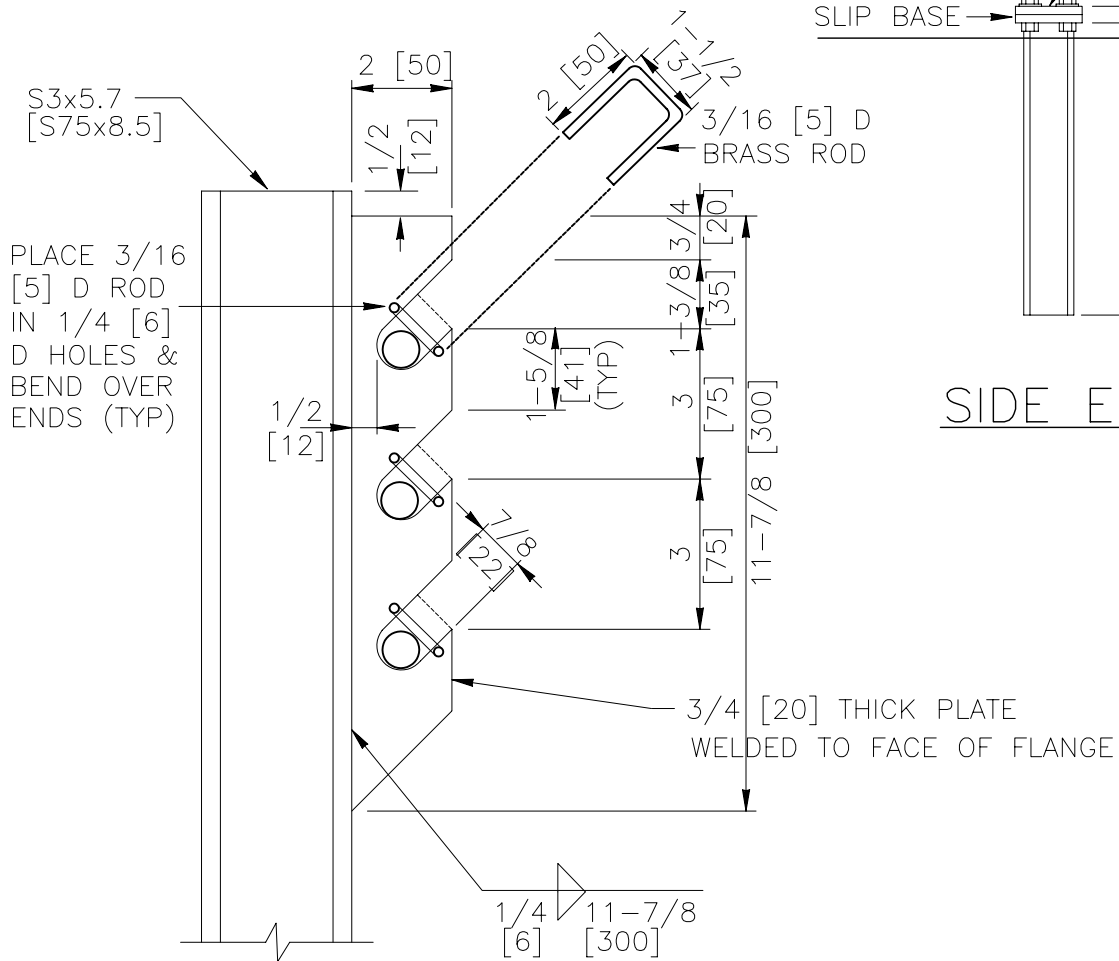
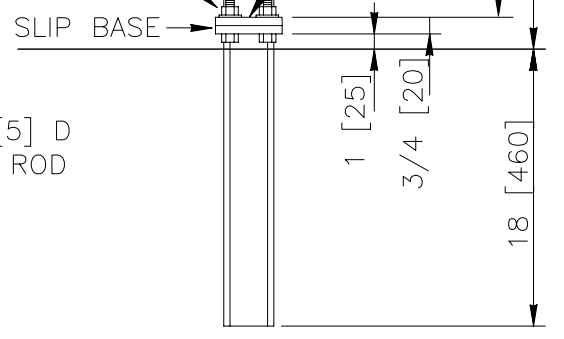


SLIP BASE PLATE



CABLE SUPPORT



SIDE ELEVATION

CABLE GUARDRAIL ANCHOR POST

PSE06

SHEET NO.	DATE:
1 of 2	8/11/2005

SPECIFICATIONS

This post shall be manufactured using AASHTO M 270/M 270M (ASTM A 709/A 709M) Grade 36 [Grade 250] steel. The section shall be manufactured such that it conforms to the geometry and tolerances of AASHTO M 160/M 160M (ASTM A 6/A 6M) for an S3x5.7 [S75x8.5] S-section. After all punching, drilling, stamping and welding is complete, the section shall be zinc-coated according to AASHTO M 111 (ASTM A 123). If corrosion-resistant hardware is required, AASHTO M 270/ M 270M (ASTM A 709/A 709M) Grade 50W [Grade 345W] steel shall be used and the embedded portion of the post shall be zinc-coated according to AASHTO M 111 (ASTM A 123). All holes shall be punched through both flanges (in-line). All welding shall conform to ANSI/AASHTO/AWS D1.5.

Designator	Area (in ²) [10 ³ mm ²]	I _x (in ⁴) [10 ⁶ mm ⁴]	I _y (in ⁴) [10 ⁶ mm ⁴]	S _x (in ³) [10 ³ mm ³]	S _y (in ³) [10 ³ mm ³]
PSE06	1.67 [1.1]	2.52 [1.1]	0.455 [0.2]	1.68 [28]	0.39 [6]

Dimensional tolerances not shown or implied are intended to be those consistent with the proper functioning of the part, including its appearance and accepted manufacturing practices.

INTENDED USE

This post is used with the SEC01 terminal. The post is inserted in the POF03 concrete anchor block, and three RCM01 cables rest in the slots at the top of the post. The top and bottom of the post are attached using a slip-base mechanism. The slip-base plates are attached using four 2.5-inch [65-mm] long FBX12a bolts and nuts with an FWC12a washer under each head and nut and between the slip plates.

CABLE GUARDRAIL ANCHOR POST

PSE06

SHEET NO.

DATE

2 of 2

8/16/2005