

**SOCKETED FOUNDATIONS FOR S3X5.7 POSTS IN ASPHALT**



**PTF03**

SHEET NO.

DATE:

1 of 3

5/12/2015

### SPECIFICATIONS

The concrete used for the Socketed Foundations for S3x5.7 Posts Placed in Asphalt should have a minimum compressive strength of 3500 psi [24MPa]. A 12" [305] diameter foundation with a minimum depth of 30" [762] is required for use in all soil with asphalt.

The HSS 4x4x1/4" [HSS 102x102x6] steel socket shall be made of ASTM A500 Grade B steel. The 4x4x1/4" [102x102x6] steel plate shall be made of ASTM A36 steel. ~~The socket and the steel plate shall be tack welded all around the socket.~~ All rebar reinforcement shall be ASTM A615, A420, or A706 Grade 60 steel.

### INTENDED USE

Socketed Foundations for S3x5.7 Posts were developed for use with systems utilizing S3x5.7 (S76x8.5) posts (PSF01) placed in asphalt.

### CONTACT INFORMATION

Midwest Roadside Safety Facility  
Nebraska Transportation Center  
University of Nebraska-Lincoln  
130 Whittier Building  
2200 Vine Street  
Lincoln, NE 68583-0853  
(402) 472-0965  
Email: [mwrfsf@unl.edu](mailto:mwrfsf@unl.edu)  
Website: <http://mwrfsf.unl.edu/>

## SOCKETED FOUNDATIONS FOR S3X5.7 POSTS IN ASPHALT



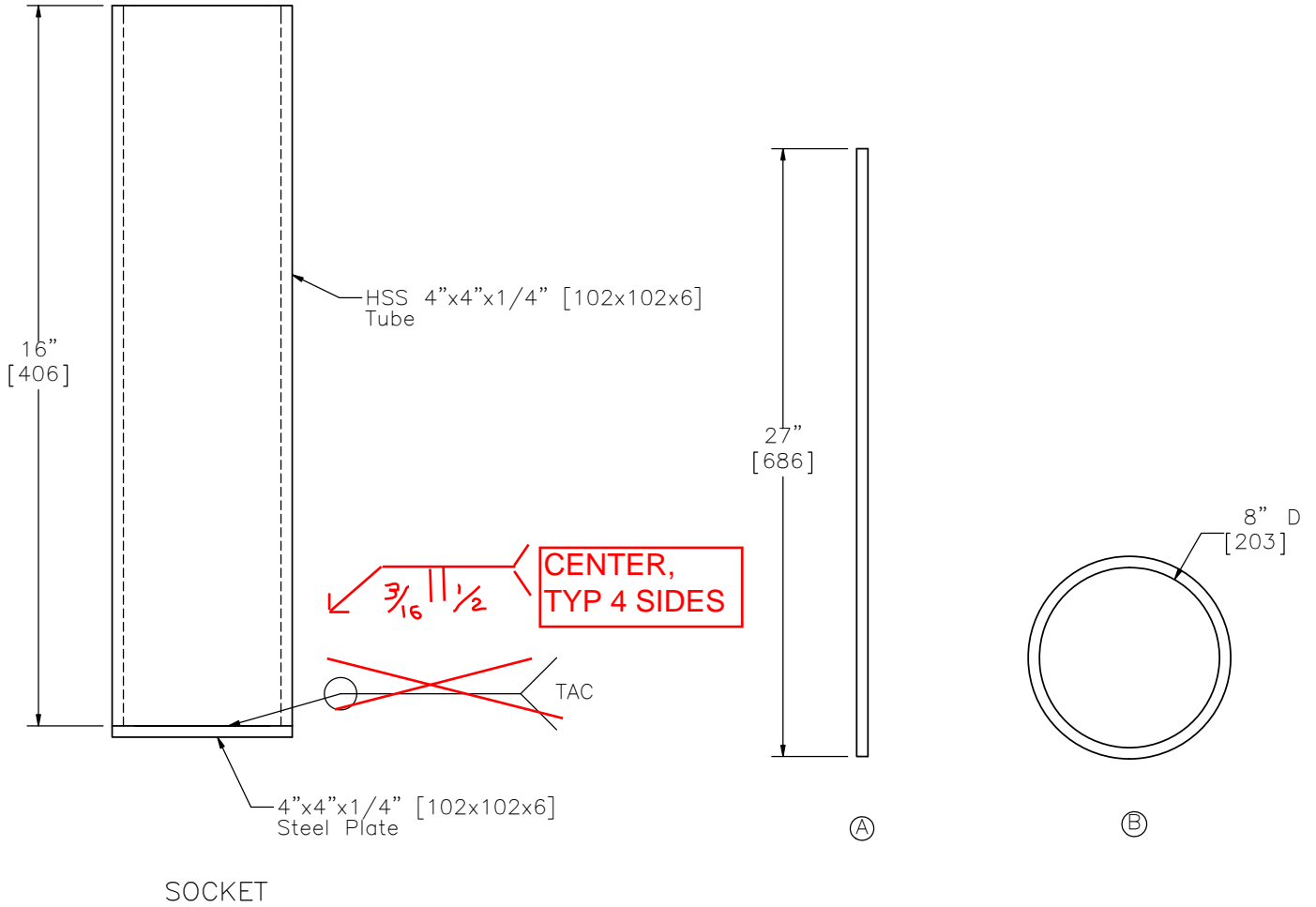
PTF03

SHEET NO.

DATE:

2 of 3

5/12/2015



BILL OF BARS

	Bar No.	No.	Length	Inside Diameter	Material
A	4	4	27" [686]	-	ASTM A615/A420/A706 Gr. 60
B	4	7	-	8" [203]	ASTM A615/A420/A706 Gr. 60

SOCKETED FOUNDATIONS FOR S3X5.7 POSTS IN ASPHALT



PTF03

SHEET NO.

DATE:

3 of 3

5/12/2015