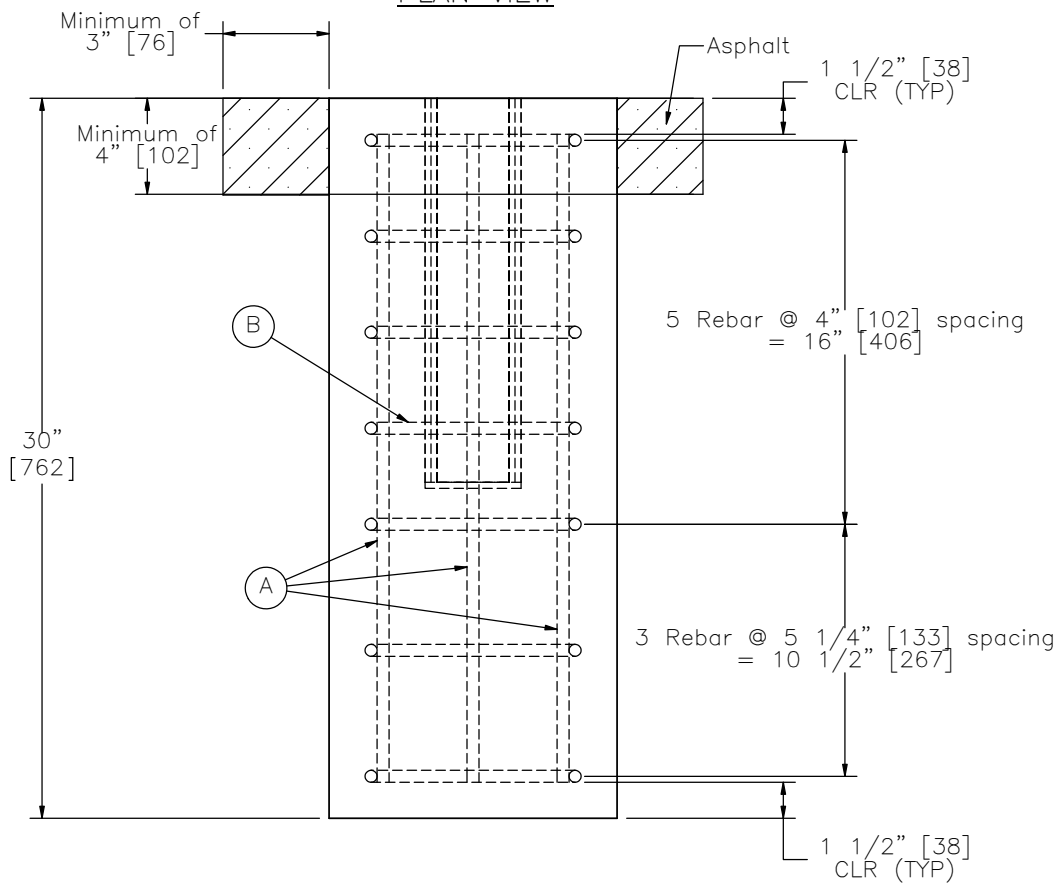


PLAN VIEW



ELEVATION VIEW

SOCKETED FOUNDATIONS FOR S3X5.7 POSTS IN ASPHALT



PTF03

SHEET NO.

DATE:

1 of 3

12/6/2016

SPECIFICATIONS

The concrete used for the Socketed Foundations for S3x5.7 Posts Placed in Asphalt should have a minimum compressive strength of 3500 psi [24MPa]. A 12" [305] diameter foundation with a minimum depth of 30" [762] is required for use in all soil with asphalt.

The HSS 4x4x1/4" [HSS 102x102x6] steel socket shall be made of ASTM A500 Grade B steel, minimum. The 4x4x1/4" [102x102x6] steel plate shall be made of ASTM A36 steel. The socket and the steel plate shall be stitch or tack-welded all around the socket, or as is deemed appropriate by manufacturer. All rebar reinforcement shall be ASTM A615, A420, or A706 Grade 60 steel.

Dimensional tolerances not shown or implied are intended to be those consistent with the proper functioning of the part, including its appearance and accepted manufacturing practices.

INTENDED USE

Socketed Foundations for S3x5.7 Posts were developed for use with systems utilizing S3x5.7 (S76x8.5) posts (PSF01) placed in asphalt.

CONTACT INFORMATION

Midwest Roadside Safety Facility
Nebraska Transportation Center
University of Nebraska-Lincoln
130 Whittier Building
2200 Vine Street
Lincoln, NE 68583-0853
(402) 472-0965
Email: mwrsf@unl.edu
Website: <http://mwrsf.unl.edu/>

SOCKETED FOUNDATIONS FOR S3X5.7 POSTS IN ASPHALT



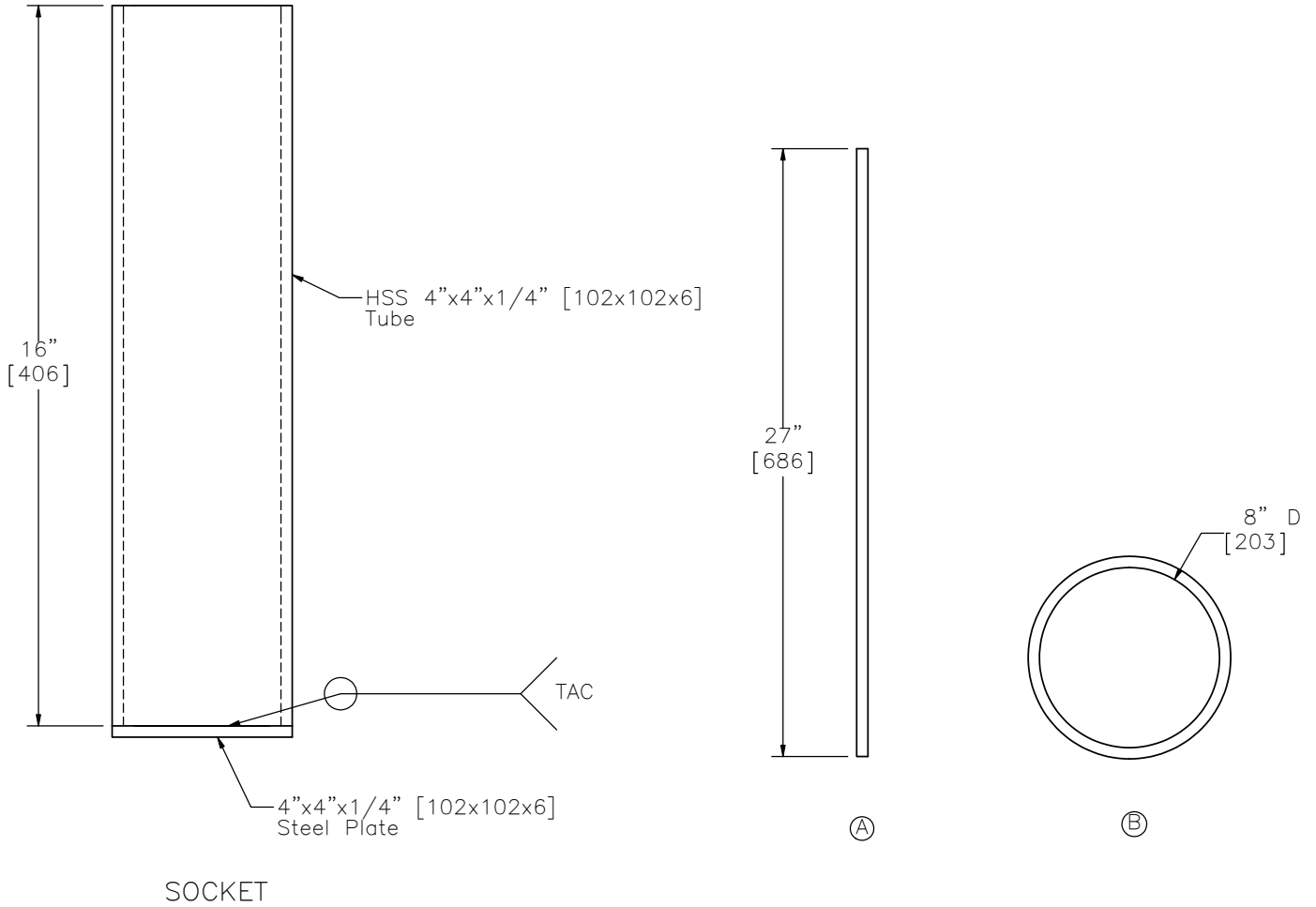
PTF03

SHEET NO.

DATE:

2 of 3

12/6/2016



BILL OF BARS

	Bar No.	No.	Length	Inside Diameter	Material
A	4	4	27" [686]	-	ASTM A615/A420/A706 Gr. 60
B	4	7	-	8" [203]	ASTM A615/A420/A706 Gr. 60

SOCKETED FOUNDATIONS FOR S3X5.7 POSTS IN ASPHALT



PTF03

SHEET NO.

DATE:

3 of 3

12/6/2016