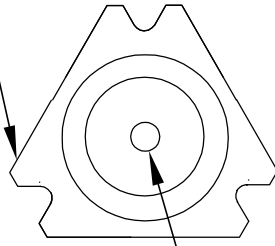
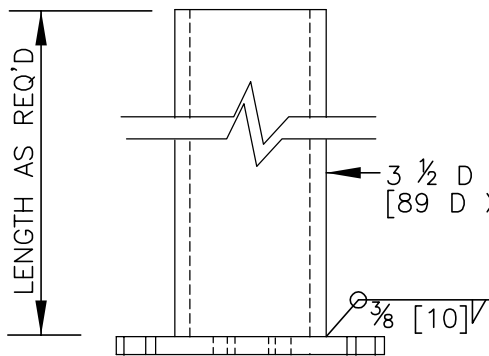
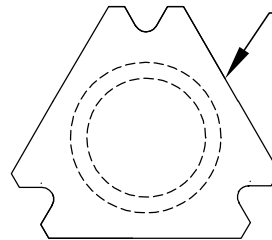


SIGN POST
BASE PLATE
(DETAIL A)

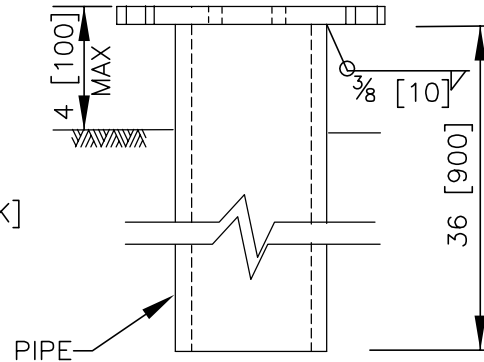


$\frac{3}{4}$ [20] D DRAIN HOLE

BASE POST
BASE PLATE
(DETAIL A)



PTF05a: SIGN POST



PTF05b: BASE POST

POST ASSEMBLIES

OMNI-DIRECTIONAL SLIPBASE BASE&SIGN POST

PTF05a-b

SHEET NO.

DATE:

1 OF 4

2006

SPECIFICATION

The omni-directional slipbase sign and base post assemblies consist of a slipbase base plate welded to a steel pipe base post and a slipbase plate welded to a steel pipe sign post. The standard structural steel pipe sections shall conform to ASTM A53. Base plates shall be manufactured from AASHTO M183M (ASTM A36M) 16-mm thick steel plate. All welding shall conform to ANSI/AASHTO/AWS D1.5. After all welding is complete the baseplate/base-post assembly shall be zinc coated according to AASHTO M111 (ASTM A123).

Designator	Area (10 ³ mm ²)	I _x (10 ⁶ mm ⁴)	I _y (10 ⁶ mm ⁴)	S _x (10 ³ mm ⁴)	S _y (10 ³ mm ⁴)
PTF05a-b	1.7	2.0	2.0	39.2	39.2

Dimensional tolerances not shown or implied are intended to be those consistent with the proper functioning of the part, including its appearance and accepted manufacturing practices.

INTENDED USE

The omni-directional slipbase sign and base posts are components of the omni-directional slipbase sign support system

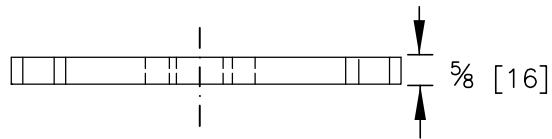
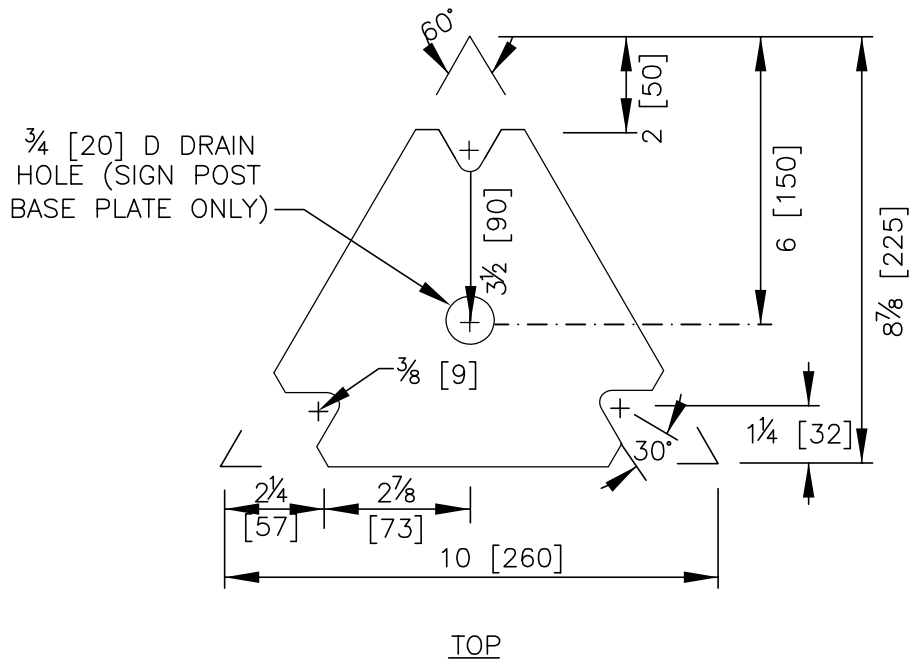
OMNI-DIRECTIONAL SLIP BASE & SIGN POST

PTF05a-b

SHEET NO.

DATE

2 of 4



DETAIL A: SLIPBASE PLATE

OMNI-DIRECTIONAL SLIPBASE BASE&SIGN POST

PTF05a-b

SHEET NO.

DATE:

3 OF 4

2006

This page intentionally left blank

OMNI-DIRECTIONAL SLIP BASE & SIGN POST

PTF05a-b

SHEET NO.

DATE

4 of 4