

PTF06a: SIGN POST

PTF06b: BASE POST

SLIPBASE TUBE SIGN & BASE POST

PTF06a-b

SHEET NO.	DATE:
1 OF 4	2006

SPECIFICATIONS

The rectangular steel tube sign and base posts shall be manufactured using ASTM A500B steel. The section shall be manufactured such that it conforms to the geometry of ASTM A500 for TS 203x102x4.8 structural tubing. The steel shall conform to ASTM A500 Grade B material. Component PTF06a is the sign post and PTF06b is the base post.

The base plate shall be manufactured from AASHTO M183M (ASTM A36) steel plates. The base plate shall be welded onto the sign post and the base post. The weld joining the post to the base plate shall be a TC-U4c joint as specified in ANSI/AASHTO/AWS D1.5. After all welding is complete the base-plate/base-post assembly shall be zinc coated according to AASHTO M111 (ASTM A123).

Designator	Area (10 ³ mm ²)	I _x (10 ⁶ mm ⁴)	I _y (10 ⁶ mm ⁴)	S _x (10 ³ mm ⁴)	S _y (10 ³ mm ⁴)
PTF06a-b	2.8	14.7	5.1	145	99

Dimensional tolerances not shown or implied are intended to be those consistent with the proper functioning of the part, including its appearance and accepted manufacturing practices.

INTENDED USE

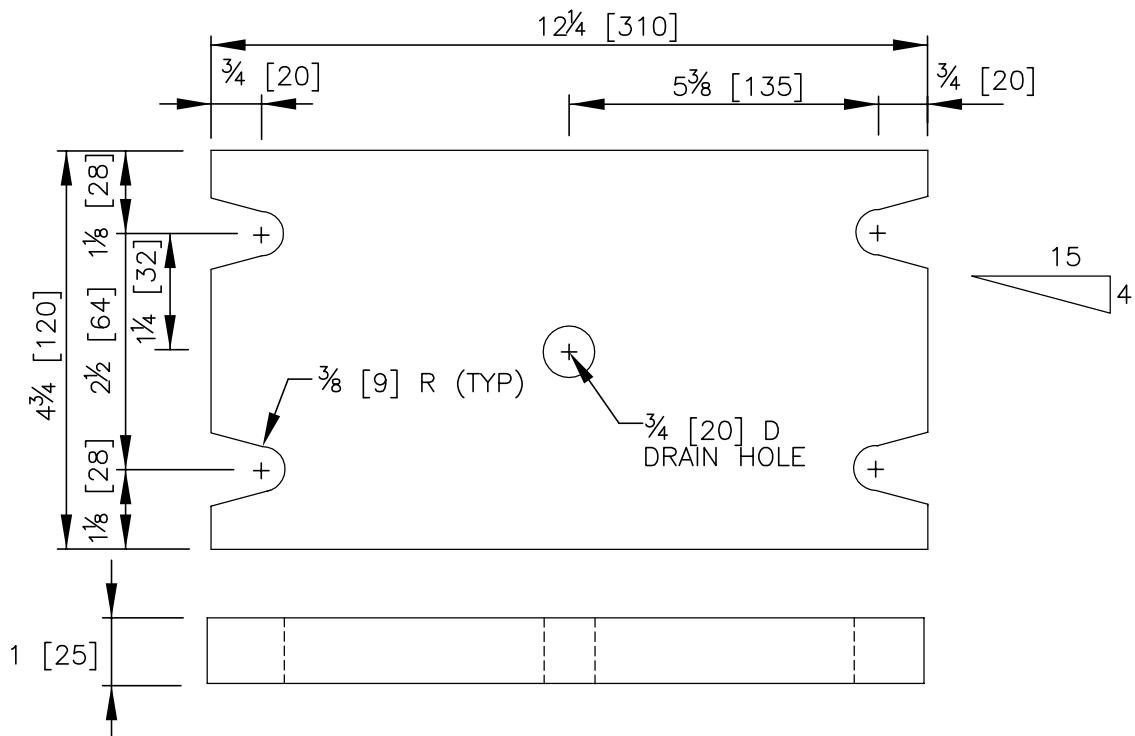
The rectangular sign and base posts are components of the tubular inclined unidirectional slipbase.

SLIPBASE TUBE SIGN & BASE POST

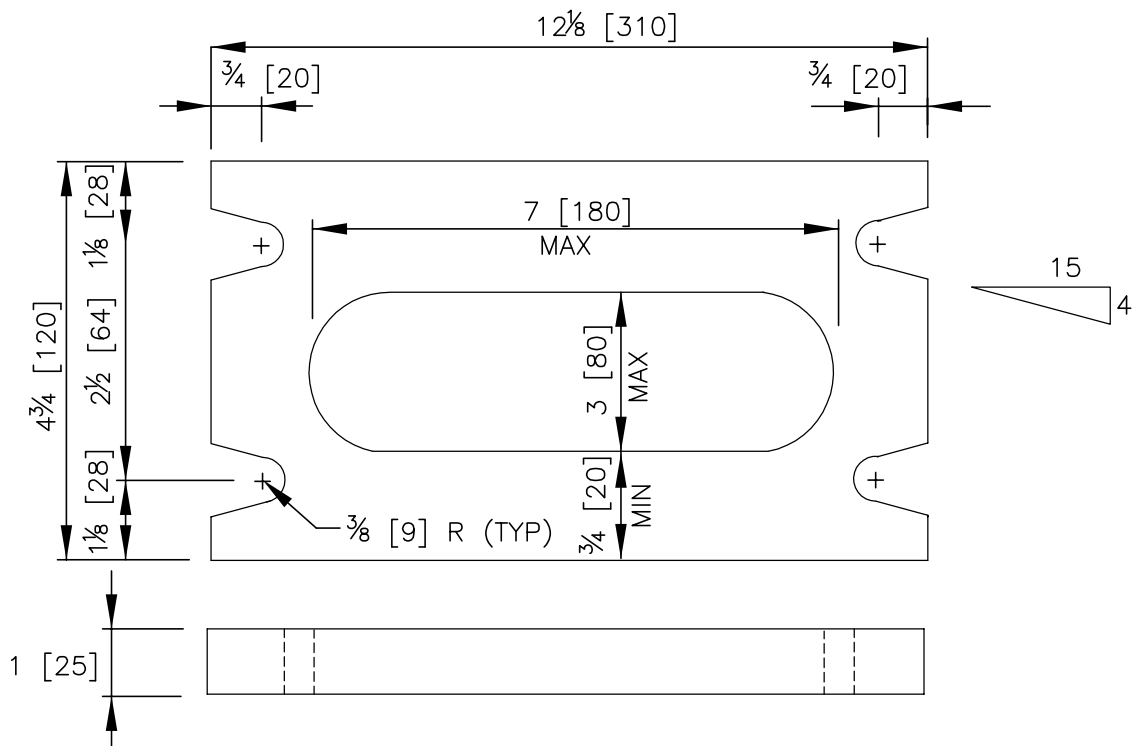
PTF06a-b

SHEET NO.

DATE



DETAIL A: UPPER BASE PLATE



DETAIL B: LOWER BASE PLATE

SLIPBASE TUBE SIGN & BASE PLATE

PTF06a-b

SHEET NO.	DATE:
3 OF 4	2006

This page intentionally left blank

SLIPBASE TUBE SIGN & BASE POST

PTF06a-b

SHEET NO.

DATE

4 of 4