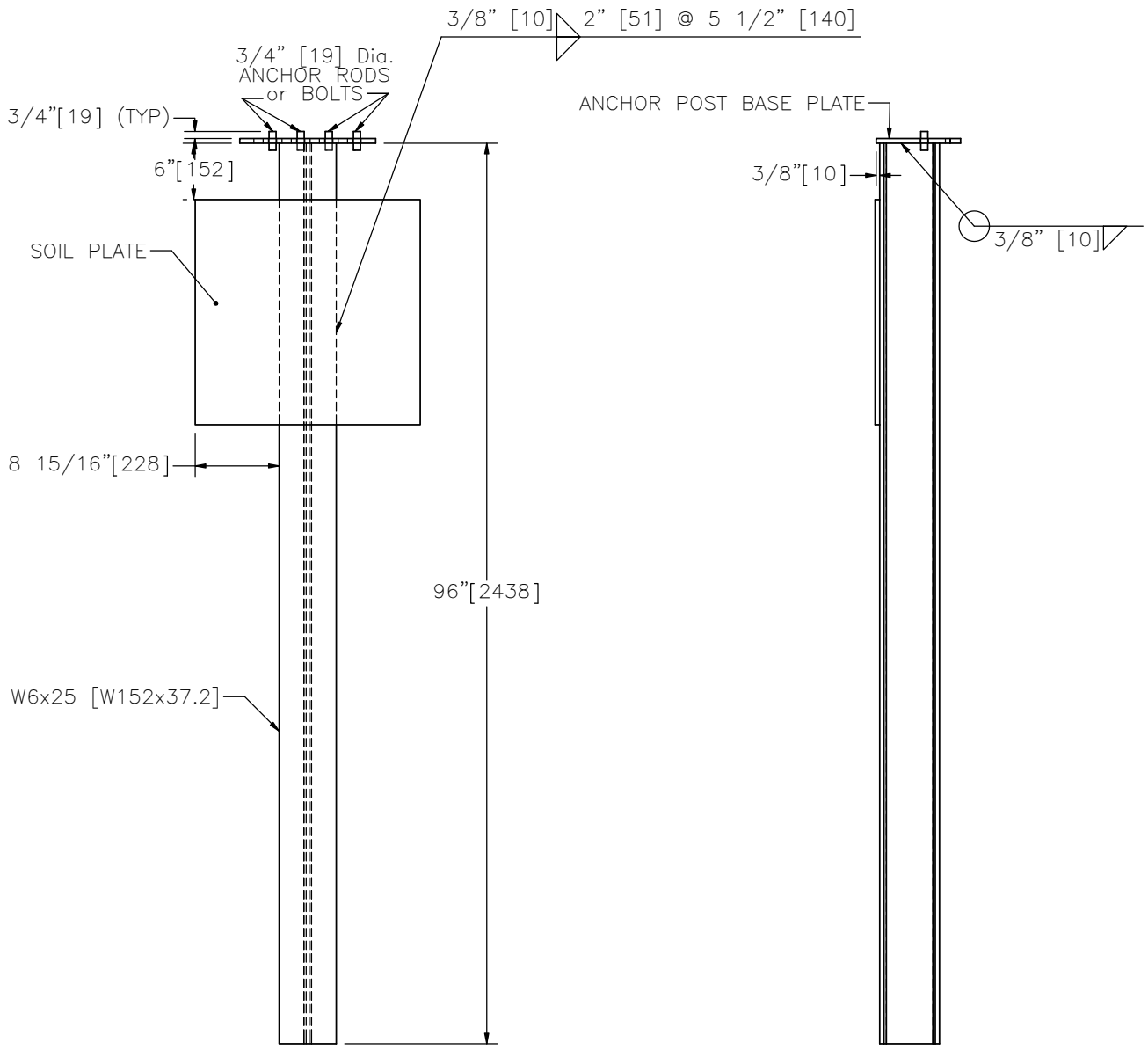


PLAN



ELEVATION

SIDE

WIDE-FLANGE ANCHOR BASE POST



PWE10

SHEET NO.

DATE:

1 of 4

8/14/2012

### SPECIFICATIONS

Cable anchor post shall be manufactured using AASHTO M270M (ASTM A709M) Grade 250 steel or ASTM A36/A36M steel unless weathering steel is required, in which case the post shall be manufactured from AASHTO M270M (ASTM A709M) Grade 50W steel. The dimensions of the cross-section shall conform to W6x25 [W152x37.2] section as defined in AASHTO M160M (ASTM A6M).

Cable anchor soil plate and anchor post base plate shall be manufactured from steel plate conforming to AASHTO M270M (ASTM A709M) Grade 250 steel or ASTM A36/A36M steel and welded to the cable anchor post.

Anchor rods shall conform to AASHTO 314 Grade 36 or AASHTO 314 Grade 55 steel and are welded in place from beneath with a 1/4" [6] minimum fillet all-around.

After the post is cut and the assembly is welded, the component should be zinc-coated according to AASHTO M111 (ASTM A123) except when corrosion resistant steel is required.

Dimensional tolerances not shown or implied are intended to be those consistent with the proper functioning of the part, including its appearance and accepted manufacturing practices.

### INTENDED USE

The cable anchor post is used with the portable concrete barrier termination SWC17.

### CONTACT INFORMATION

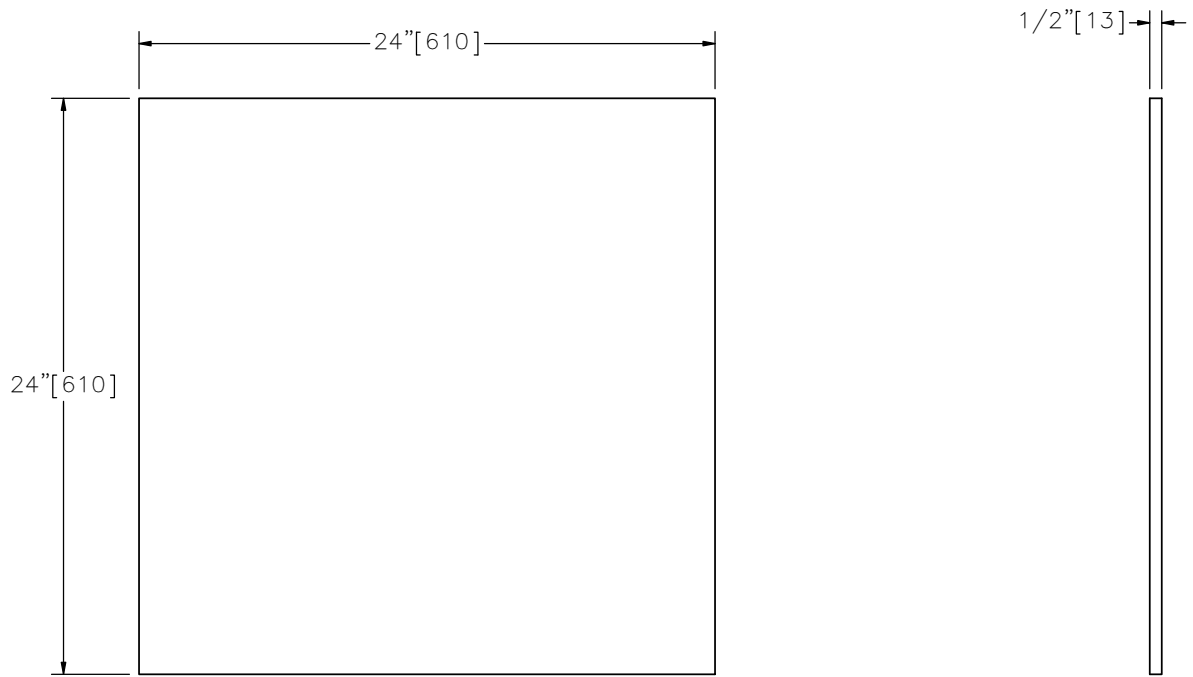
Midwest Roadside Safety Facility  
Nebraska Transportation Center  
University of Nebraska-Lincoln  
130 Whittier Research Center  
2200 Vine Street  
Lincoln, NE 68583-0853  
(402) 472-0965  
Email: [mwrsf@unl.edu](mailto:mwrsf@unl.edu)  
Website: <http://mwrsf.unl.edu>

## WIDE-FLANGE ANCHOR BASE POST

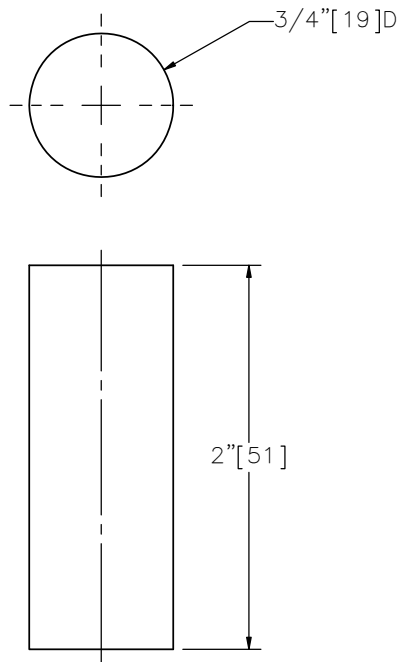
PWE10



SHEET NO.	DATE:
2 of 4	8/14/2012



SOIL PLATE



ANCHOR ROD

WIDE-FLANGE ANCHOR BASE POST



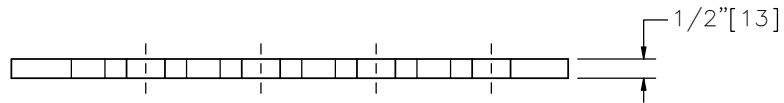
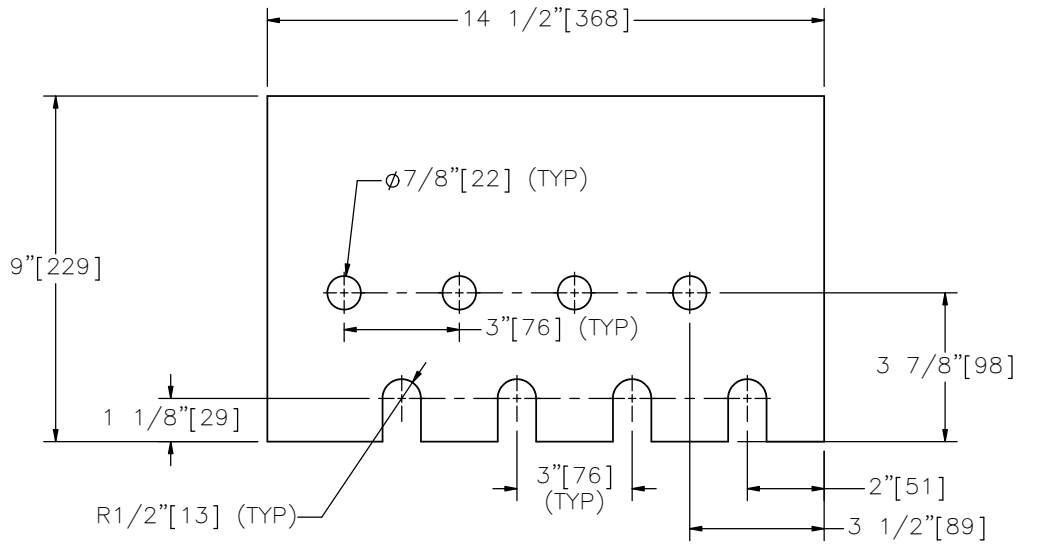
PWE10

SHEET NO.

DATE:

3 of 4

8/14/2012



ANCHOR POST BASE PLATE

WIDE-FLANGE ANCHOR BASE POST

PWE10



SHEET NO.	DATE:
4 of 4	8/14/2012