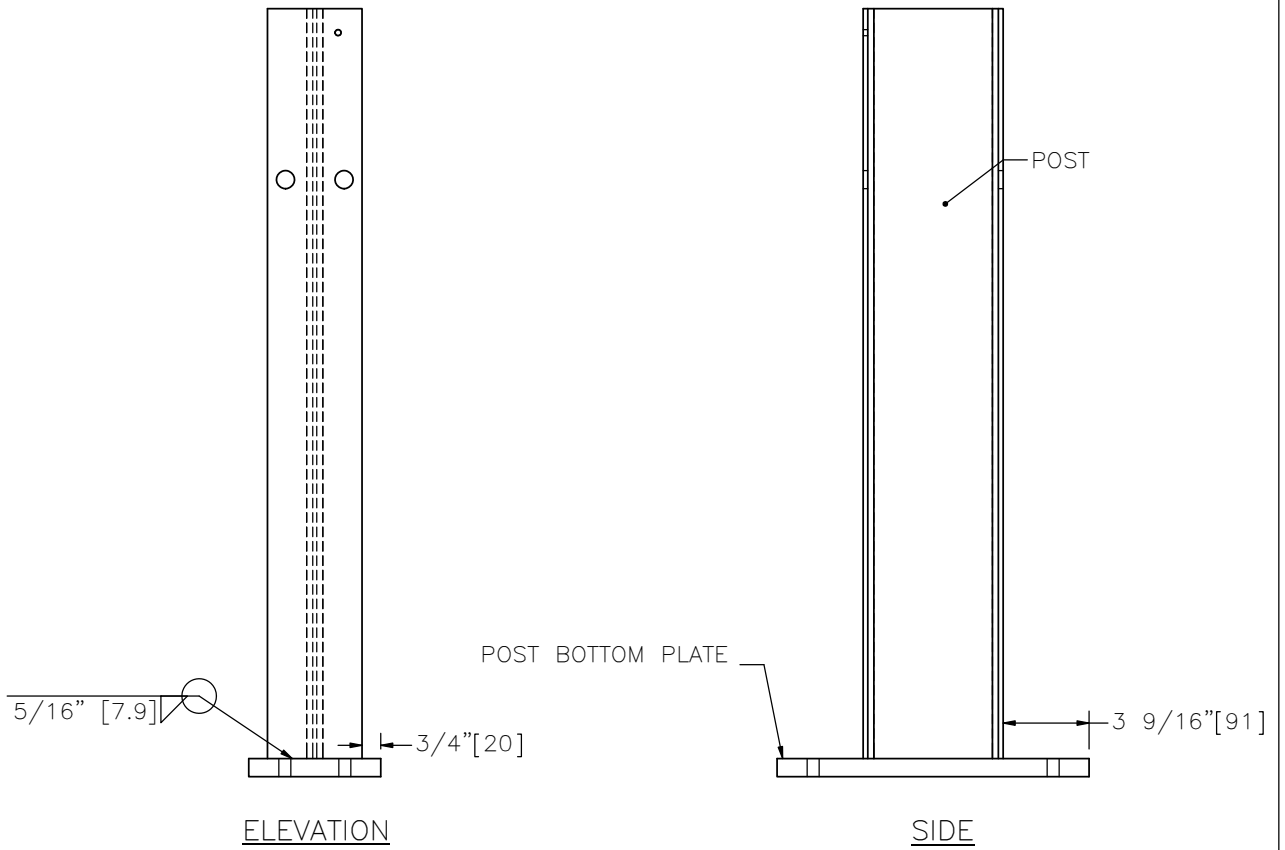


PLAN



WIDE-FLANGE BULLNOSE END TERMINAL SLIP POST



PWE11

SHEET NO.

DATE:

1 of 4

4/17/2013

## SPECIFICATIONS

The post shall be manufactured using AASHTO M270M (ASTM A709M) Grade 250 steel or ASTM A36/A36M. If corrosion resistant steel is required, the post shall be manufactured from AASHTO M270M (ASTM A709M) Grade 50W steel. The dimensions of the cross-section shall conform to a W6x8.5 [W150x13.4] section as defined in AASHTO M160M (ASTM A6M). W6x9 [W150x13.4] wide-flange posts are an acceptable alternative that is considered equivalent to the W6x8.5 [W150x12.6].

The post bottom plate shall be made from AASHTO ASTM A36 steel.

After the section is cut, all holes are drilled or punched, and welds completed, the component should be zinc-coated according to AASHTO M111 (ASTM A123) unless corrosion resistant steel is used. When corrosion resistant steel is used, the foundation tube shall be zinc-coated according to AASHTO M111 (ASTM A123) and the portion above the soil shall not be zinc-coated, painted, or otherwise treated.

Dimensional tolerances not shown or implied are intended to be those consistent with the proper functioning of the part, including its appearance and accepted manufacturing practices.

## INTENDED USE

The wide-flange bullnose end terminal slip post is a component of the Thrie-Beam Bullnose End Terminal (SET03a-b) guardrail system.

## CONTACT INFORMATION

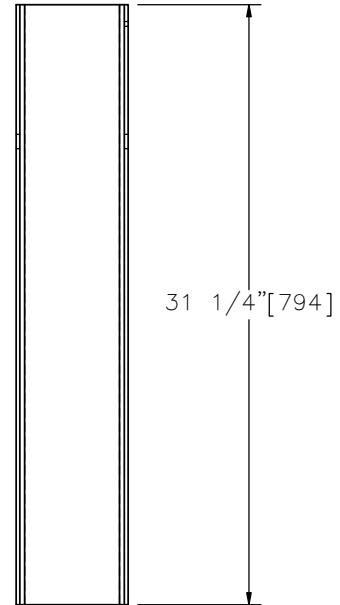
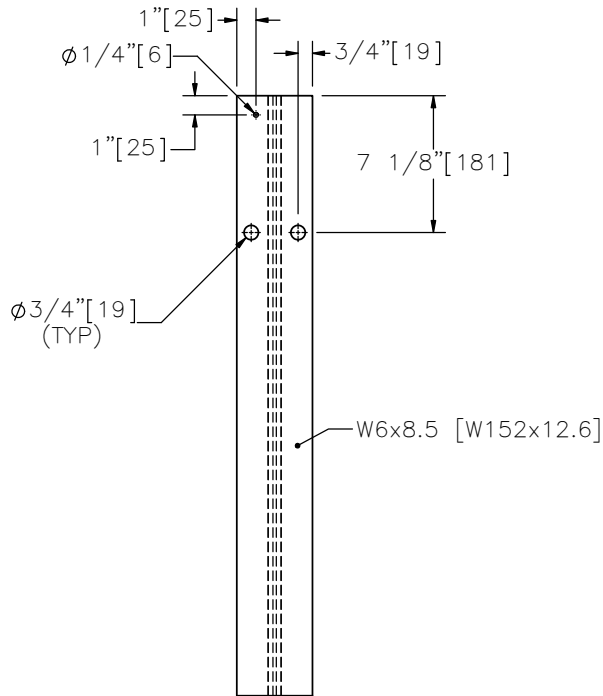
Midwest Roadside Safety Facility  
Nebraska Transportation Center  
University of Nebraska-Lincoln  
130 Whittier Research Center  
2200 Vine Street  
Lincoln, NE 68583-0853  
(402) 472-0965  
Email: [mwrfsf@unl.edu](mailto:mwrfsf@unl.edu)  
Website: <http://mwrfsf.unl.edu>

## WIDE-FLANGE BULLNOSE END TERMINAL SLIP POST

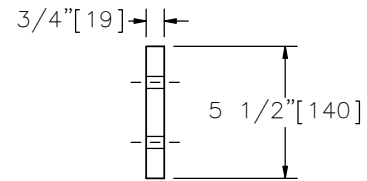
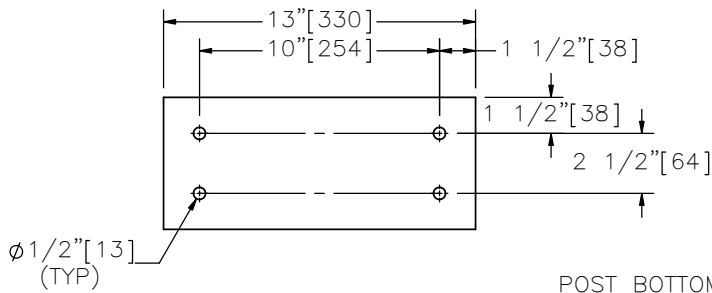
PWE11



SHEET NO.	DATE:
2 of 4	4/17/2013



POST



POST BOTTOM PLATE

WIDE-FLANGE BULLNOSE END TERMINAL SLIP POST



PWE11

SHEET NO.

DATE:

3 of 4

4/17/2013

THIS PAGE INTENTIONALLY LEFT BLANK

WIDE-FLANGE BULLNOSE END TERMINAL SLIP POST

PWE11



SHEET NO.

DATE:

4 of 4

4/17/2013