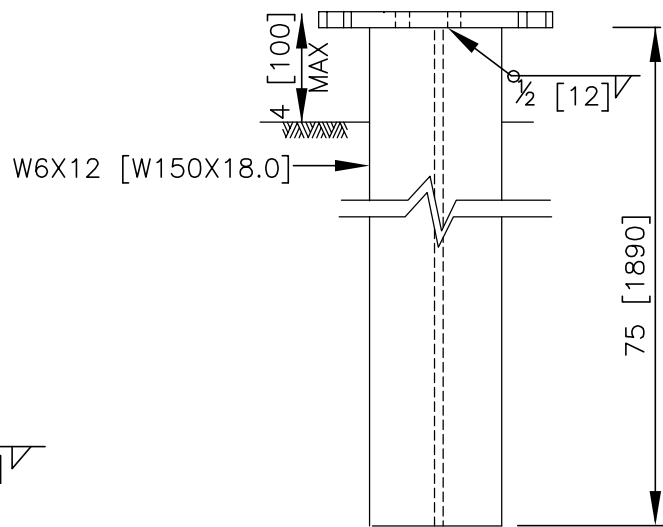


PWF07a: SIGN POST



PWF07b: BASE POST

OMNI-DIRECTIONAL SLIPBASE

PWF07a-b

SHEET NO.

DATE:

1 OF 4

2006

SPECIFICATIONS

The omni-directional slipbase sign (PWF07a) and base (PWF07b) posts consist of a slipbase base plate welded to a base post and a slipbase base welded to a sign post. The W150x18.0 structural steel wide-flange shape as defined in AASHTO M160M (ASTM A6M) shall be made using AASHTO M183M (ASTM A36M) structural steel. The base plate shall be manufactured from AASHTO M183M (ASTM A36A) 38-mm thick steel plate. The lower base plate shall be welded onto the base post and the upper base plate (FPS11a) shall be welded onto the sign post. All welding shall conform to ANSI/AASHTO/AWS D1.5. After all welding is complete the base-plate/base-post assembly shall be zinc coated according to AASHTO M111 (ASTM A123).

Dimensional tolerances not shown or implied are intended to be those consistent with the proper functioning of the part, including its appearance and accepted manufacturing practices.

INTENDED USE

The omni-directional W-post slipbase base sign posts are components of the omni-directional slipbase W-post sign support system (SSS04a-b).

OMNI-DIRECTIONAL SLIPBASE

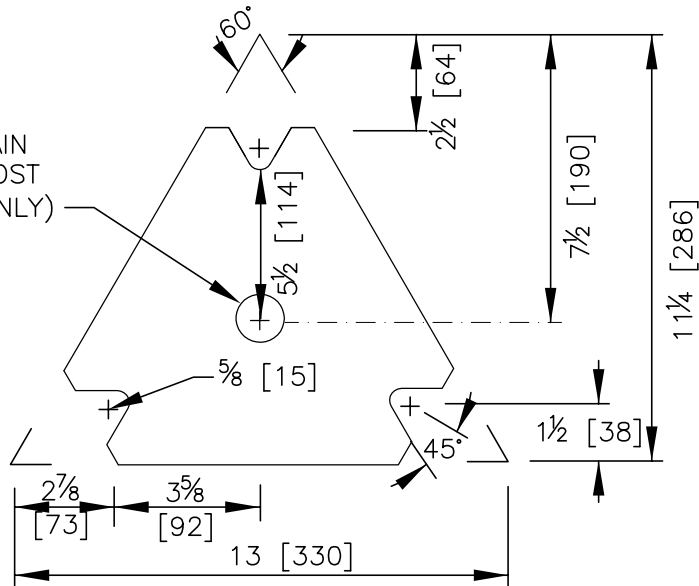
PWF07a-b

SHEET NO.

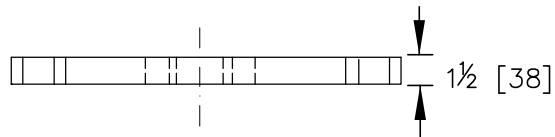
DATE

2 of 4

3/4 [20] D DRAIN
HOLE (SIGN POST
BASE PLATE ONLY)



TOP



ELEVATION

DETAIL A: SLIPBASE PLATE

OMNI-DIRECTIONAL SLIPBASE

PWF07a-b

SHEET NO.

DATE:

3 OF 4

2006

This page intentionally left blank

OMNI-DIRECTIONAL SLIPBASE

PWF07a-b

SHEET NO.

DATE

4 of 4