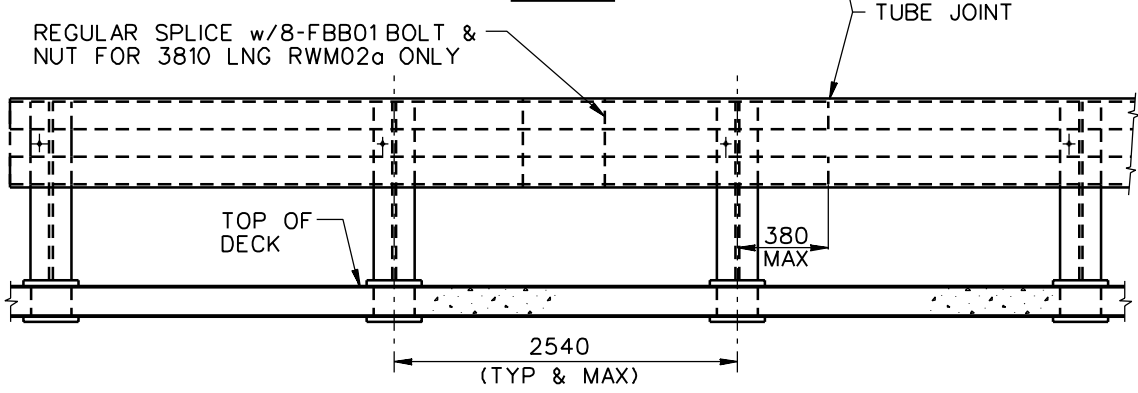


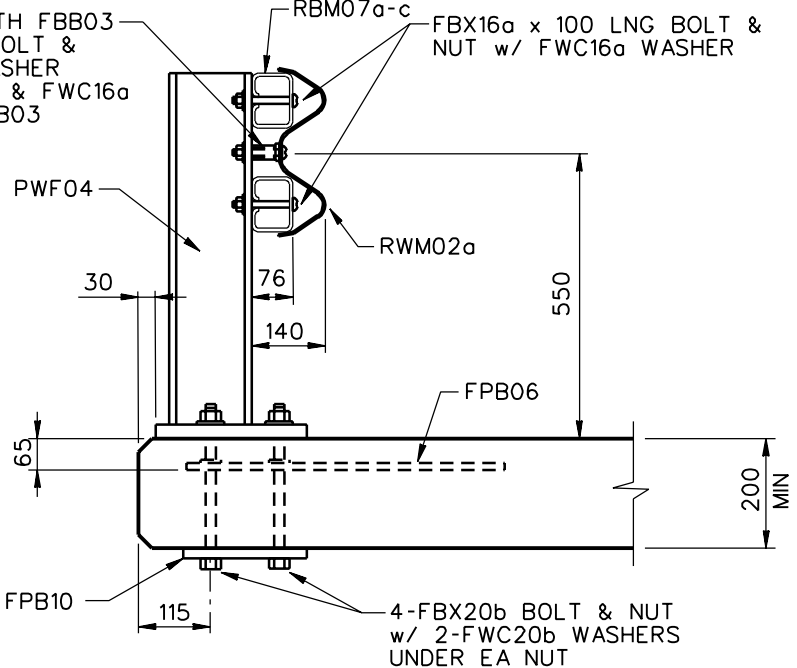
**PLAN**



**ELEVATION**

FMM03 SPACER WITH FBB03 TRIMMED TO 120 BOLT & NUT, 2-FWC24a WASHER EA END OF FMM03 & FWC16a UNDER NUT OF FBB03

RBM07a-c FBX16a x 100 LNG BOLT & NUT w/ FWC16a WASHER



**SECTION**

1994

**W AND TUBE BEAM BRIDGE RAILING**

**SBB02a**

SHEET NO.	REF. NO.
1 of 2	

### INTENDED USE

This steel post-and-beam system is a general purpose AASHTO Performance Level one bridge railing also known as the Texas T101. This system was system number seven in the 1986 FHWA list of crash tested bridge railings in the 1986 FHWA Memorandum on bridge railings. This drawing and specification address only the bridge railing and not the design or detailing of the bridge deck. Only reinforcement directly related to the bridge rail is shown. Bridge decks should be designed to develop the full strength of the bridge railing.

### COMPONENTS

Unit Length = 7620

Designator	Component	Number
FBB01	Guardrail splice bolts and nuts	16
FBB04	Guardrail bolt and nut	3
FBX16a	Rail-post bolts (100 mm) and nuts	6
FBX20b	Anchor bolts and nuts	24
FMM03	Spacer	3
FPB06	Embedded anchor bracket	3
FPB10	Anchor bearing plate	3
FWC16a	Washers	16
FWC20b	Anchor washers	12
FWC24a	Washers	2
PWF04	Post	3
RBM07a	Square tubing	2
or	RBM07b	2
or	RBM07c	2
	RWM02a	2

### REFERENCES

R.D. Morgan, *Bridge Rails*, Memorandum to Regional FHWA Administrators, Federal Highway Administration, Washington, D.C., August 28, 1986.

C.E. Buth, A. Arnold, W. L. Campise, T. J. Hirsch, D. L. Ivey, and J. S. Noel "*Safer Bridge Railings Volume 1: Summary Report*", FHWA Report No. FHWA-RD-82-072, Federal Highway Administration, Washington, D.C., June 1984.

## W AND TUBE BEAM BRIDGE RAILING

# SBB02a

SHEET NO.

DATE

2 of 2

03-05-06

