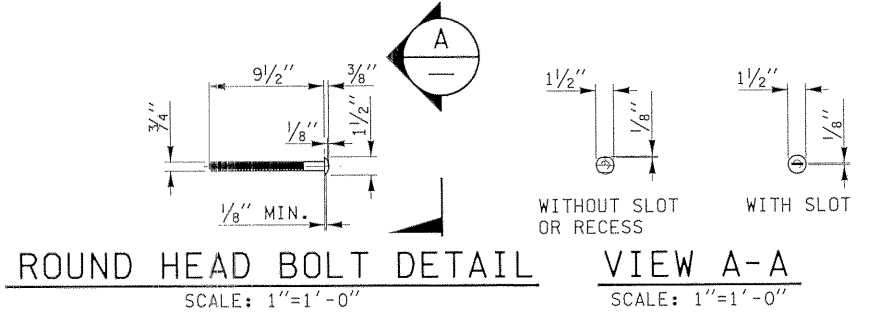
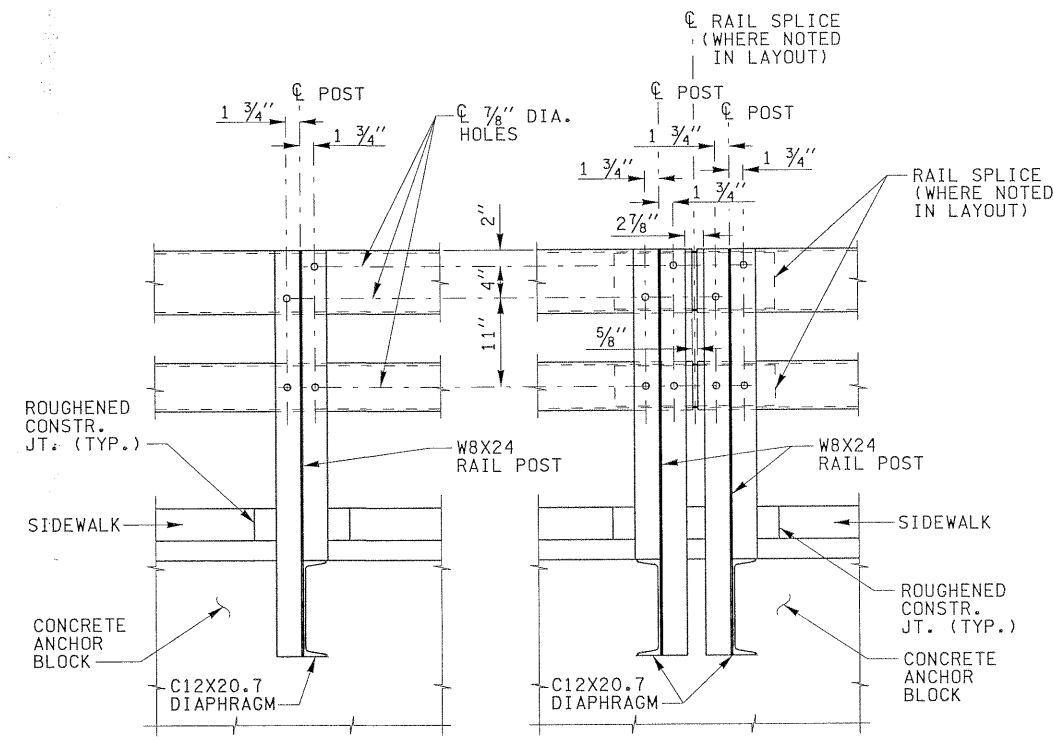


OPEN GRID DECK & DIAPHRAGM LAYOUT
SCALE: N.T.S.

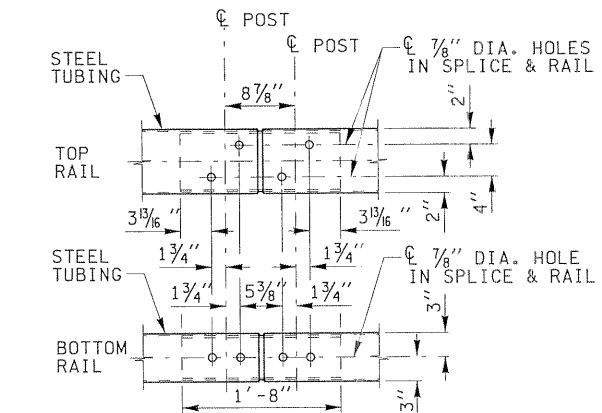


ROUND HEAD BOLT DETAIL VIEW A-A
SCALE: 1"=1'-0"

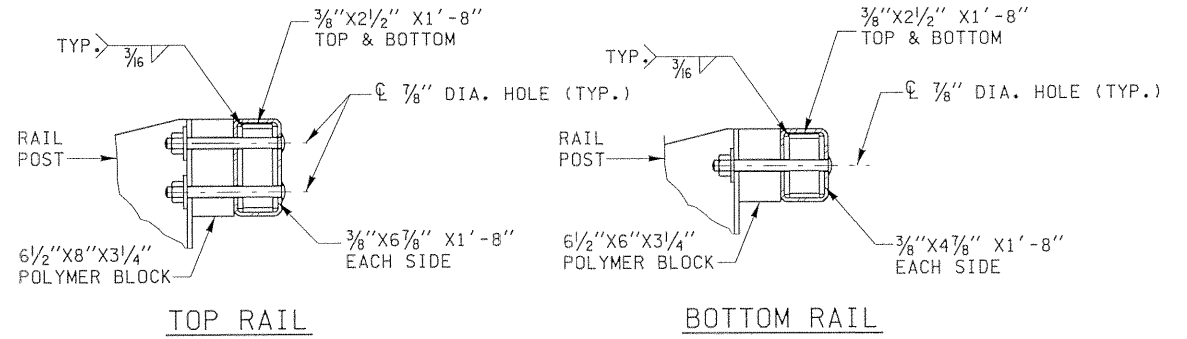
NOTE:
SEE SHEET 2 FOR DIAPHRAGM-CONCRETE ANCHOR BLOCK CONNECTIONS.



RAIL POST ELEVATIONS
SCALE: 1"=1'-0"



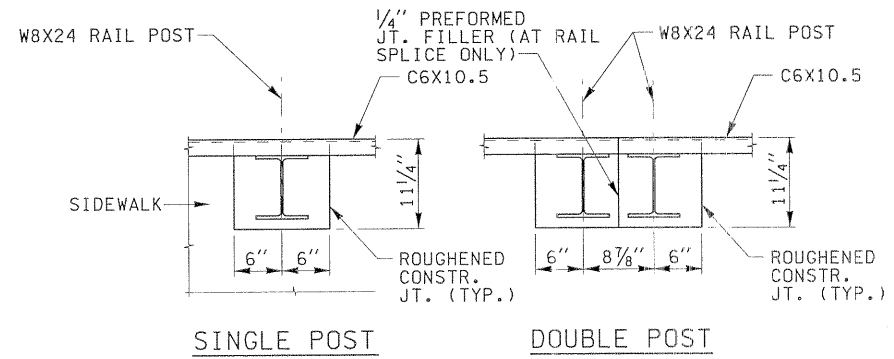
RAIL SPLICE ELEVATION
SCALE: 1"=1'-0"



SECTIONS AT RAIL SPLICE
SCALE: 1"=1'-0"

FABRICATION NOTES

HOLLOW STRUCTURAL STEEL TUBING SHALL CONFORM TO THE REQUIREMENTS OF ASTM DESIGNATION A 500 GRADE B STRUCTURAL STEEL TUBING AND SHALL MEET THE LONGITUDINAL CVN REQUIREMENTS OF 15 FT-LBS AT 0° F.
 ALL OTHER STEEL SHAPES AND PLATES SHALL CONFORM TO THE REQUIREMENTS OF AASHTO M 270 GRADE 36 EXCEPT RAIL POSTS SHALL CONFORM TO AASHTO M 270, GRADE 50.
 BOLTS, CAP SCREWS, AND NUTS SHALL CONFORM TO THE REQUIREMENTS OF ASTM DESIGNATION A 307 EXCEPT FOR HIGH STRENGTH BOLTS, NUTS AND WASHERS NOTED WHICH SHALL CONFORM TO AASHTO M164.
 CONCRETE SIDEWALK AND ROADWAY SLAB SHALL HAVE f'c OF 3600 PSI AT 28 DAYS AND A UNIT WEIGHT OF 115 LBS/CFT
 STEEL GRID DECK SHALL BE 5 INCH RB AS MANUFACTURED BY IKG GREULICH OR EQUIVALENT SECTION. THE PANELS SHALL BE FABRICATED OF ASTM A36 STEEL WITH A 6" MAIN BAR SPACING.
 WELDING SHALL COMPLY WITH THE ANSI/AASHTO/AWS D1.5-96 BRIDGE WELDING CODE. POLYMER BLOCK SHALL BE MONDOBLOCK AS MANUFACTURED BY MONDO POLYMER TECHNOLOGIES OR APPROVED EQUAL.
 ANCHOR BOLTS SHALL HAVE A MINIMUM PULLOUT STRENGTH OF 18,000 LBS AND SHALL MEET THE REQUIREMENTS OF ASTM A 449 OR AASHTO M 164.
 CONCRETE IN SIDEWALK ANCHOR BLOCK SHALL HAVE f'c OF 3000 PSI AT 28 DAYS. CONCRETE SIDEWALK SHALL BE CAST IN TWO POURS. FIRST POUR SHALL LEAVE BLOCKOUT AROUND RAIL POSTS. SECOND POUR SHALL FILL IN BLOCKOUTS.



RAIL BLOCKOUT
SCALE: 1"=1'-0"

Preliminary Document
Not for Construction
Date: 1/29/03
Subject to Revision

ISSUE NO.	DATE	ISSUE RECORD DESCRIPTION	DSGN. BY	DRWN. BY	LEAD ENGR.
1	1/20/03	MODIFIED AND ADDED DETAILS	TVS	DEN	TJC
2	1/22/03	REV. SPLICE LOCATION, CONC. SPEC., & ANCHOR BOLT SPEC.	TVS	DEN	TJC
3	1/28/03	ADDED BLOCKOUT DETAILS	TVS	DEN	TJC

TRAFFIC BARRIER CRASH TEST
SR-16 TACOMA NARROWS BRIDGE
PTG/HNTB JV, JANUARY, 2003