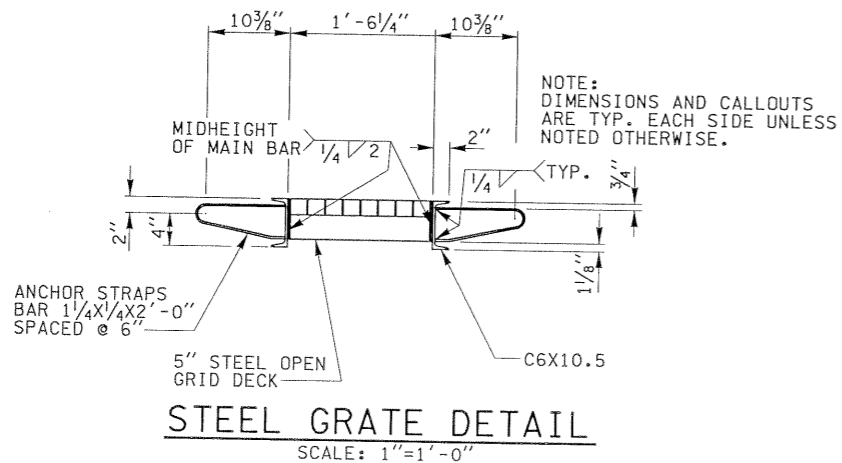


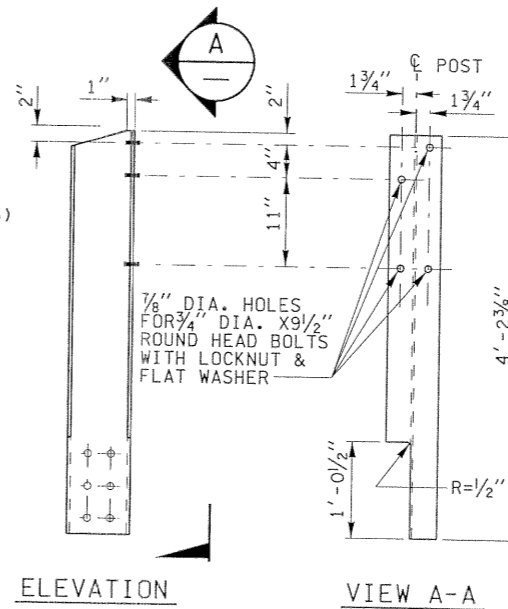
**TYPICAL SECTION**  
SCALE: 1"=1'-0"

NOTE:  
WF SHALL BE PLACED FOR THE FULL WIDTH OF THE SIDEWALK EXCEPT WITHIN THE RAIL BLOCKOUTS. SIDEWALK AREA WITHIN THE RAIL BLOCKOUT AREA SHALL BE UNREINFORCED.

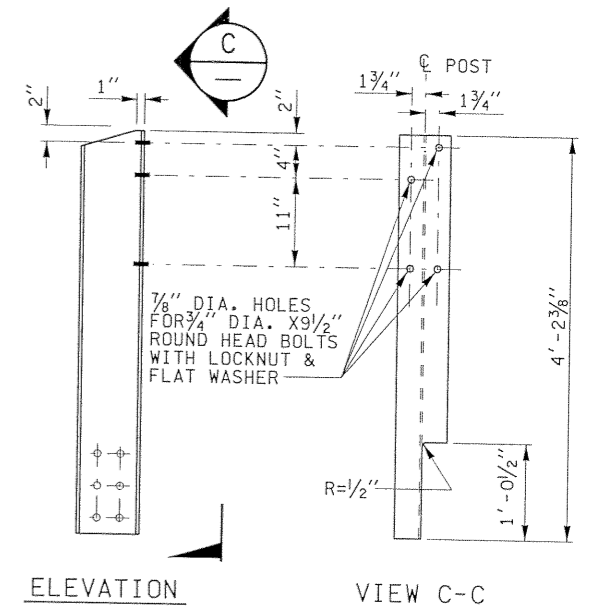
\* FIELD VERIFY PRIOR TO ORDERING REINFORCING STEEL.



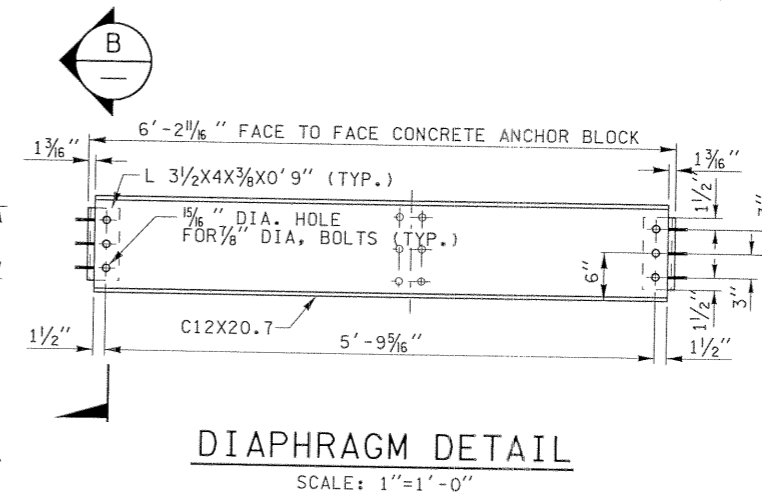
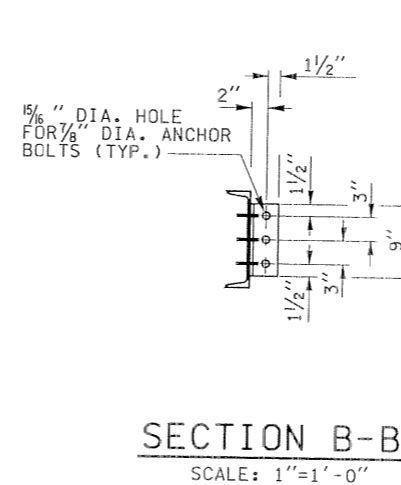
**STEEL GRATE DETAIL**  
SCALE: 1"=1'-0"



**RAIL POST 1 DETAIL**  
(4 RAIL POSTS REQ'D.)  
SCALE: 1"=1'-0"



**RAIL POST 2 DETAIL**  
(10 RAIL POSTS REQ'D.)  
SCALE: 1"=1'-0"



Preliminary Document  
Not for Construction  
Date: 1/29/03  
Subject to Revision

ISSUE NO.	DATE	ISSUE RECORD DESCRIPTION	DSGN. BY	DRWN. BY	LEAD ENGR.
1	1/20/03	MODIFIED AND ADDED DETAILS	TVS	DEN	TJC
2	1/22/03	REV. SPLICE LOCATION, CONC. SPEC., & ANCHOR BOLT SPEC.	TVS	DEN	TJC
3	1/28/03	REVISED CONCRETE ANCHOR BLOCKS	TVS	DEN	TJC

TRAFFIC BARRIER CRASH TEST  
SR-16 TACOMA NARROWS BRIDGE  
PTG/HNTB JV, JANUARY, 2003