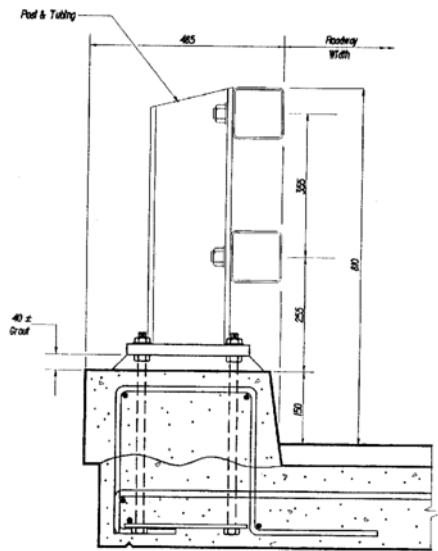


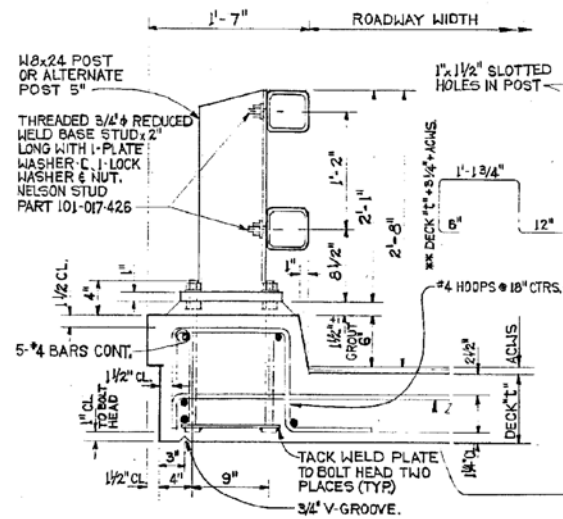
2-Tube Curb Mount



All Dimensions Shown Are mm unless Otherwise Noted.

CURB MOUNT-POST DETAIL

FIGURE D.5 2-Tube Curb-Mounted Bridge Railing



CURB MOUNT-POST DET

1 1/2" = 1'-0" (1=B)

FIGURE D.5 Oregon 2-Tube Curb Mounted Bridge Railing

Rail Height	810 mm	
Test Vehicle	905-kg Car	2107-kg Car
Impact Speed km/h	94	97
Impact Angle Degrees	18.8	25