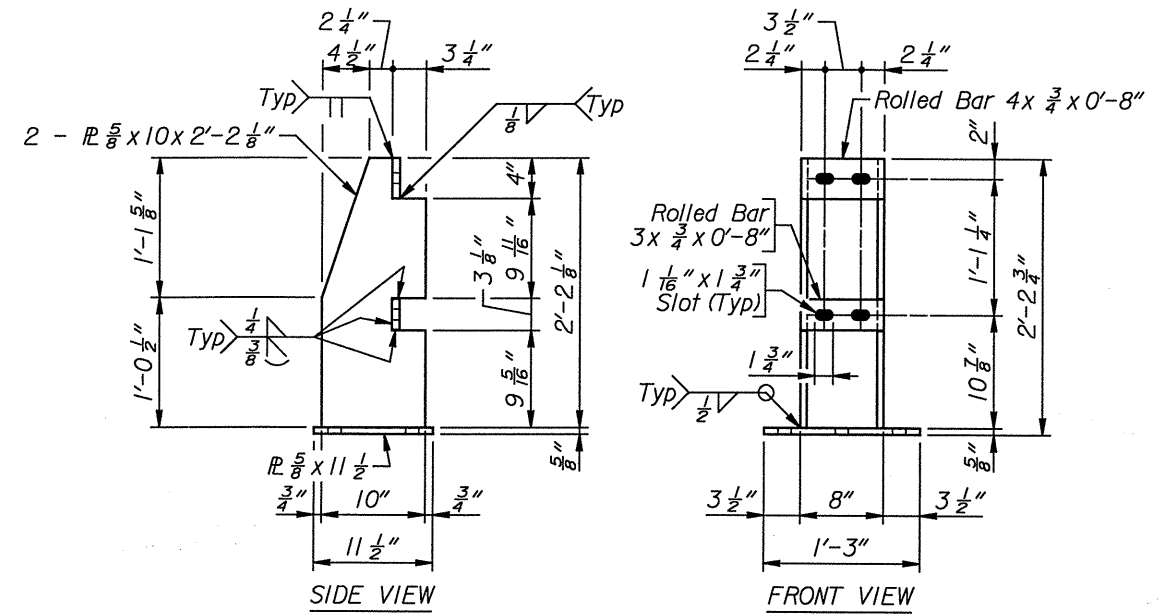
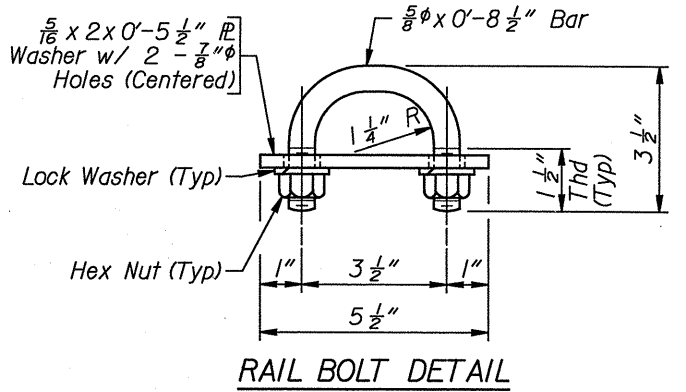


POST ASSEMBLY DETAIL
 (Shown near ϕ Post)
 (Bridge Slab shown, Approach Slab similar)



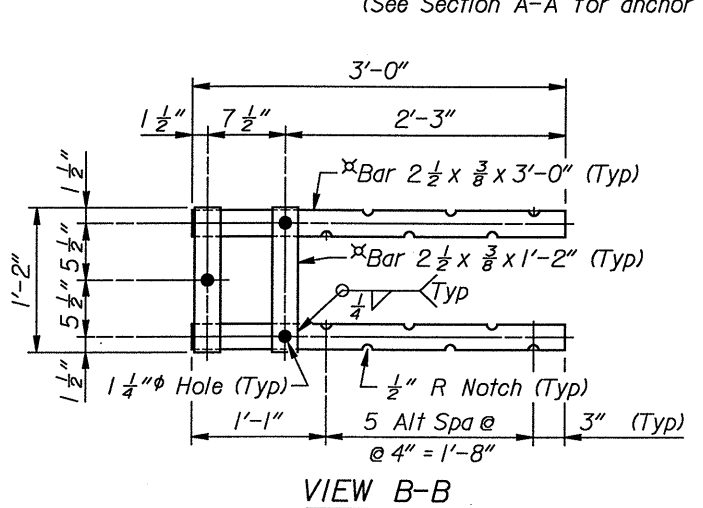
POST DETAILS
 (See Section A-A for anchor bolt hole spacing)



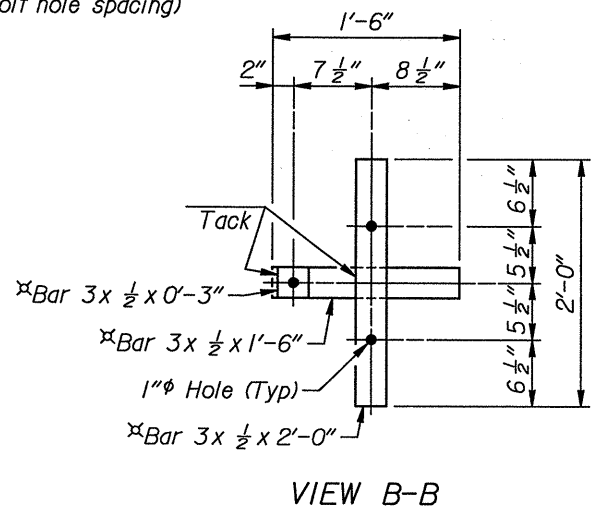
RAIL BOLT DETAIL

PLAN
 (X posts req'd)

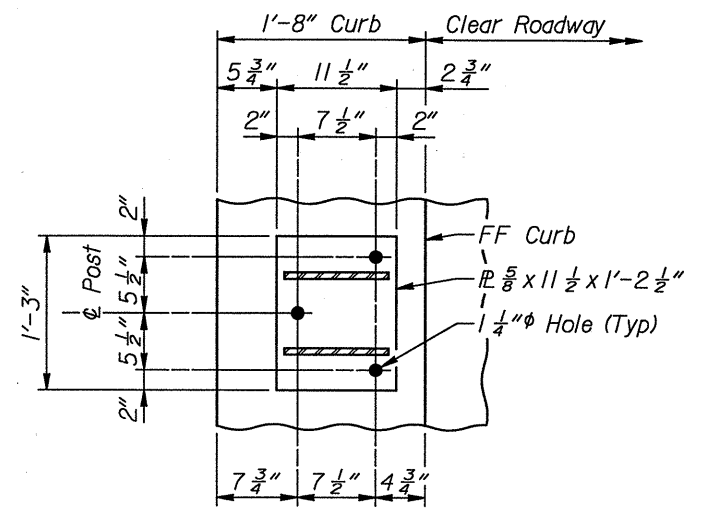
- Note:**
- 1) Venting and pick-up holes in rails and sleeves shall be shown on the Fabricator's shop plans. All vent holes shall be on the underside of the rail members as installed.
 - 2) Post base plates shall be flat after fabrication.
 - 3) All rough edges on posts and rails shall be ground smooth.
 - 4) Railing hardware shall be galvanized in accordance with Subsection 501.43 - GALVANIZING of the Standard Specifications.
 - 5) Anchor bolts may be tack welded to the lower anchorage (Shop or field).
 - 6) Posts shall be in place and in proper alignment prior to placement of curb.
 - 7) In the areas indicated on the Plan requiring an expansion splice, the expansion splice shall be located in the railing panel which passes over rear face abutment.
 - 8) After installation of the rail, all exposed bolt threads shall be painted with two coats of zinc rich paint conforming to the requirements of ASTM A 780.
 - 9) For details of terminal types, see Sheet No. x.
 - 10) For splice details, see Sheet No. x.



VIEW B-B
 (Showing upper anchorage)
 (Not galvanized)
 (Anchor bolts not shown)



VIEW B-B
 (Showing lower anchorage)
 (Not galvanized)
 (Anchor bolts not shown)



SECTION A-A
 (Anchor bolts not shown)

WYOMING DEPARTMENT OF TRANSPORTATION BRIDGE PROGRAM			
BRIDGE RAILING DETAILS			
RAIL TL4I.DGN TL-4, English			
APPROVED	DESIGN	DATE	Design Section X
	DETAIL		Drwg. No. X
	Q'S.		Sheet X of X