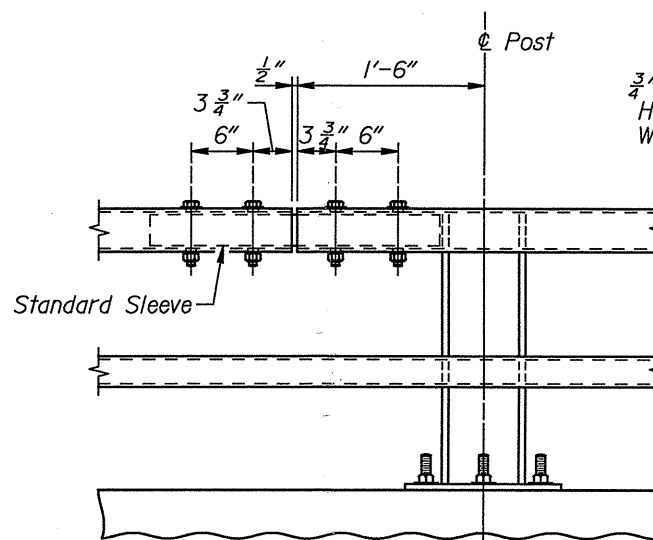
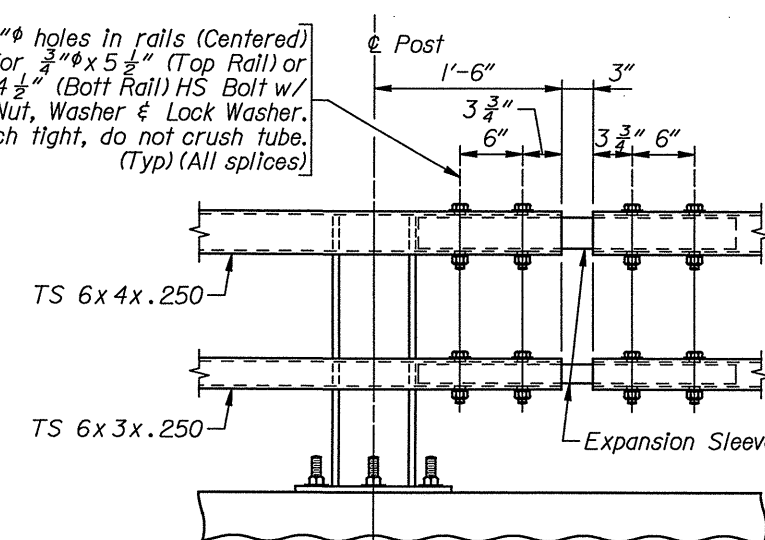


STANDARD SPLICE  
 (Top or bottom rail)



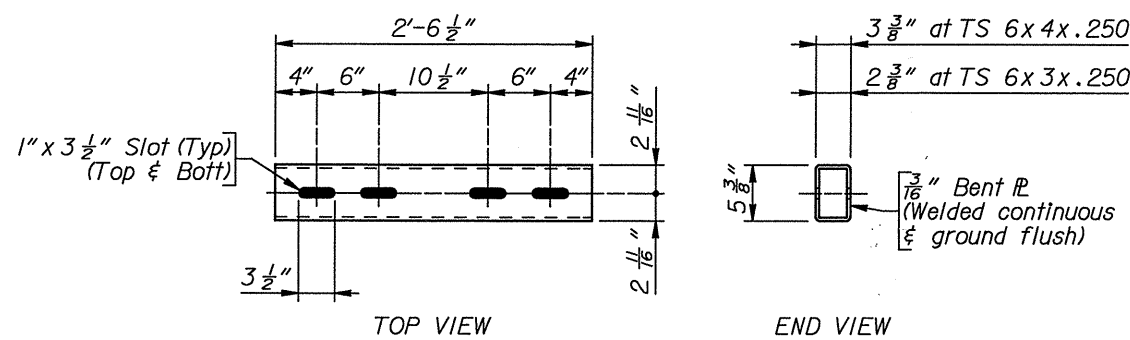
DOUBLE-BOLTED SPLICE  
 (Top or bottom rail)

1"  $\phi$  holes in rails (Centered)  
 for 3/4"  $\phi$  x 5 1/2" (Top Rail) or  
 3/4"  $\phi$  x 4 1/2" (Bott Rail) HS Bolt w/  
 Hex Nut, Washer & Lock Washer.  
 Wrench tight, do not crush tube.  
 (Typ) (All splices)

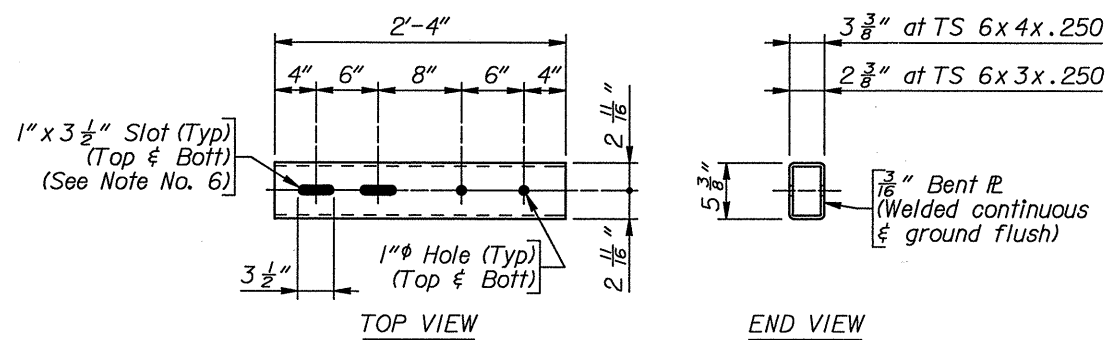


EXPANSION SPLICE  
 (Top and bottom rail)

SPLICE DETAILS



EXPANSION SLEEVE DETAILS



STANDARD SLEEVE DETAILS

- Note:
- 1) In rehabilitation work, railing that cannot feasibly be made continuous over a minimum of two posts shall be provided with a double-bolted splice.
  - 2) Not more than one splice is permitted per side of post, except at expansion splices.
  - 3) Splices may be located on either side of post.
  - 4) Rails shall not be shop spliced.
  - 5) Sleeves shall be fabricated from structural steel conforming to the requirements of AASHTO M 183 (ASTM A 36) and galvanized in accordance with Subsection 501.43 - GALVANIZING of the Standard Specifications.
  - 6) Slots may be omitted in standard sleeves where bolts are required on one side of splice only.
  - 7) All rough edges on sleeves shall be ground smooth.

WYOMING DEPARTMENT OF TRANSPORTATION BRIDGE PROGRAM			
REVISIONS		BRIDGE RAILING DETAILS	
		RAIL TL43.DGN TL-4 , English	
APPROVED	DESIGN	Design Section X	
DATE	DETAIL	Drwg. No. X	Sheet X of X
	Q'S.		