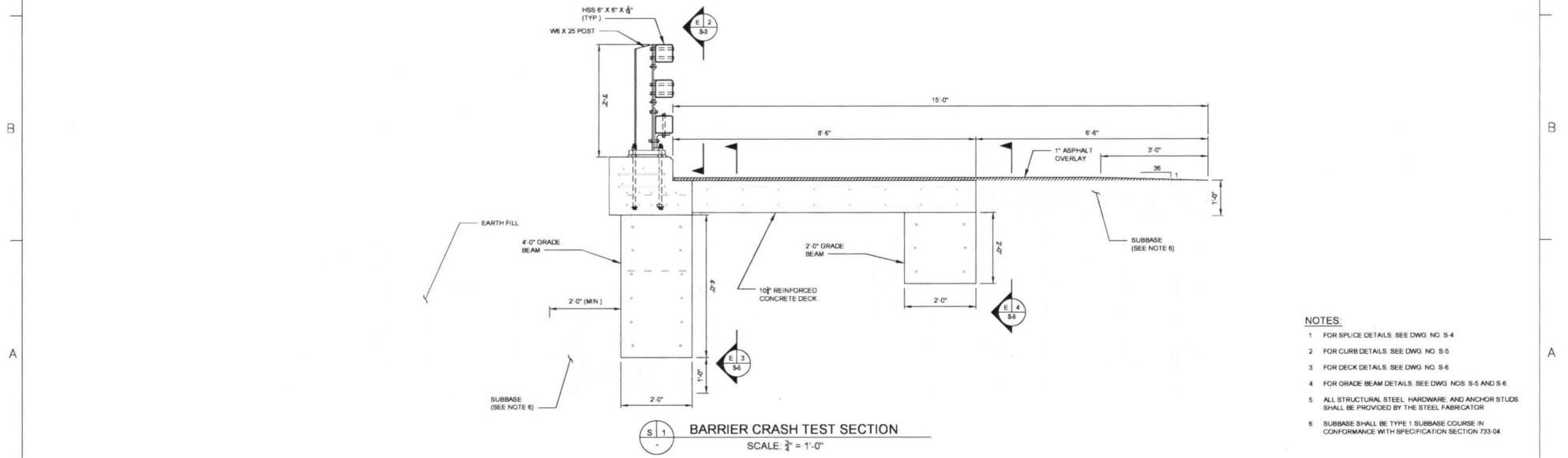


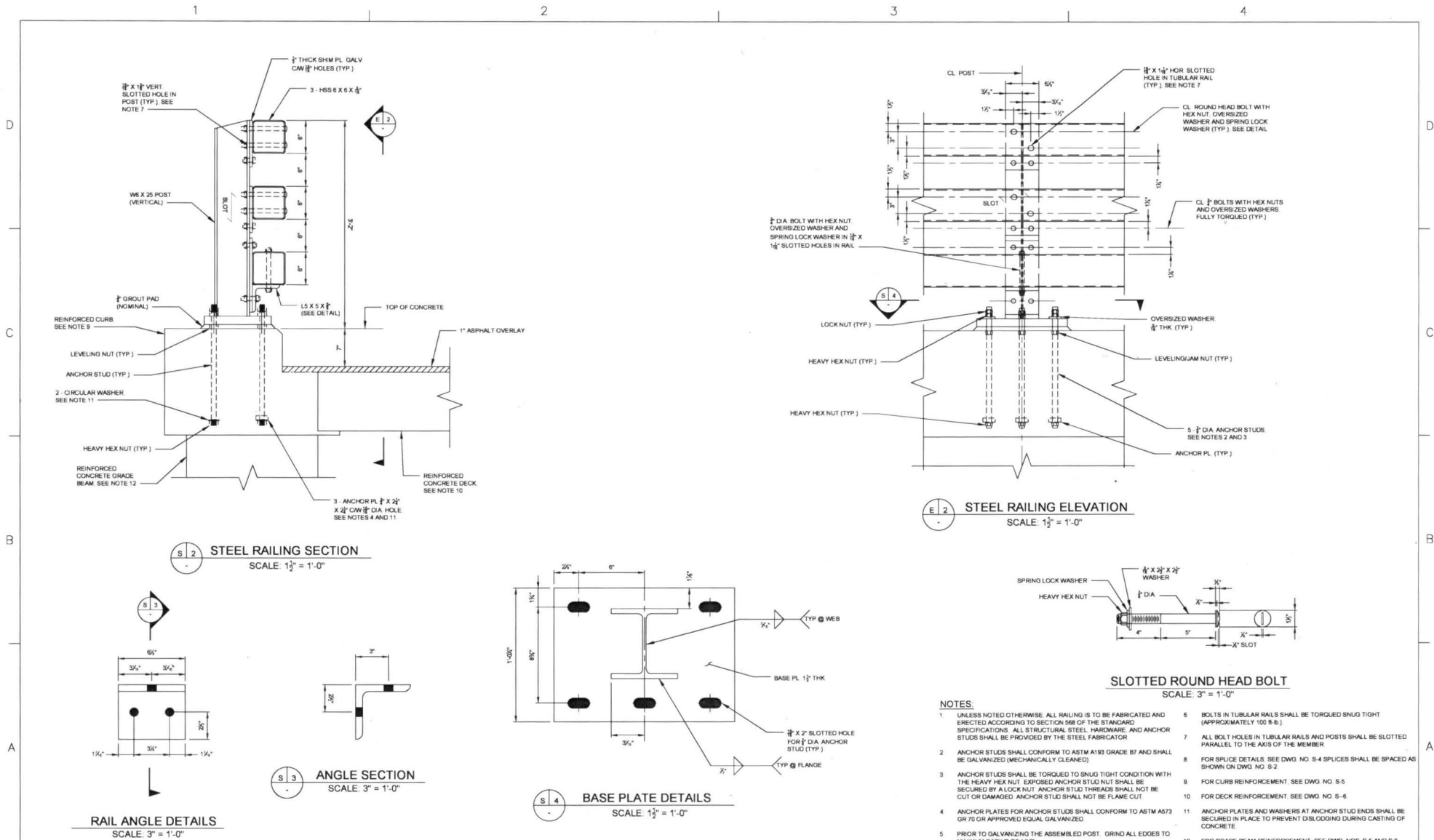
E 1 BARRIER CRASH TEST ELEVATION
SCALE: $\frac{1}{2}$ " = 1'-0"



S 1 BARRIER CRASH TEST SECTION
SCALE: $\frac{1}{4}$ " = 1'-0"

- NOTES:**
- 1 FOR SPLICE DETAILS SEE DWG NO. S-4
 - 2 FOR CURB DETAILS SEE DWG NO. S-5
 - 3 FOR DECK DETAILS SEE DWG NO. S-6
 - 4 FOR GRADE BEAM DETAILS SEE DWG NOS. S-5 AND S-6
 - 5 ALL STRUCTURAL STEEL HARDWARE AND ANCHOR STUDS SHALL BE PROVIDED BY THE STEEL FABRICATOR
 - 6 SUBBASE SHALL BE TYPE 1 SUBBASE COURSE IN CONFORMANCE WITH SPECIFICATION SECTION 733.04

DRAWN BY A. HEISER DESIGNED BY A. HEISER CHECKED BY M. ZDENEK SCALE: AS SHOWN					3 RAIL STEEL BARRIER CRASH TEST – BARRIER FOUNDATION AND INSTALLATION	DRAWING TITLE BARRIER CRASH TEST - ELEVATION AND SECTION		CONTRACT NO.
REV. DESCRIPTION DATE APP'D.			DRAWING NO. S-2			SHEET 3 OF 7		
<small>*IT IS A VIOLATION OF THE PROFESSIONAL LICENSE LAW FOR ANY PERSON TO ALTER THIS DRAWING IN ANY WAY, UNLESS ACTING UNDER THE DIRECTION OF A LICENSED PROFESSIONAL ENGINEER/ARCHITECT AS APPLICABLE. THE ALTERING ENGINEER/ARCHITECT SHALL AFFIX HIS/HER SEAL AND THE NOTATION "ALTERED BY FOLLOWED BY HIS/HER SIGNATURE AND DATE OF ALTERATION."</small>						PROJECT NO.	DATE MAY 26, 2017	REVISION NO. 0



- NOTES:**
- UNLESS NOTED OTHERWISE, ALL RAILING IS TO BE FABRICATED AND ERECTED ACCORDING TO SECTION 588 OF THE STANDARD SPECIFICATIONS. ALL STRUCTURAL STEEL HARDWARE AND ANCHOR STUDS SHALL BE PROVIDED BY THE STEEL FABRICATOR.
 - ANCHOR STUDS SHALL CONFORM TO ASTM A193 GRADE B7 AND SHALL BE GALVANIZED (MECHANICALLY CLEANED).
 - ANCHOR STUDS SHALL BE TORQUED TO SNUG TIGHT CONDITION WITH THE HEAVY HEX NUT. EXPOSED ANCHOR STUD THREADS SHALL NOT BE CUT OR DAMAGED. ANCHOR STUD SHALL NOT BE FLAME CUT.
 - ANCHOR PLATES FOR ANCHOR STUDS SHALL CONFORM TO ASTM A573 OR TO AN APPROVED EQUAL GALVANIZED.
 - PRIOR TO DOWNING THE ASSEMBLED POST, GRIND ALL EDGES TO MINIMUM RADIUS OF 1/8".
 - BOLTS IN TUBULAR RAILS SHALL BE TORQUED SNUG TIGHT (APPROXIMATELY 100 FT-LB).
 - ALL BOLT HOLES IN TUBULAR RAILS AND POSTS SHALL BE SLOTTED PARALLEL TO THE AXIS OF THE MEMBER.
 - FOR SPLICE DETAILS, SEE DWG. NO. S-4 SPLICES SHALL BE SPACED AS SHOWN ON DWG. NO. S-2.
 - FOR CURB REINFORCEMENT, SEE DWG. NO. S-5.
 - FOR DECK REINFORCEMENT, SEE DWG. NO. S-6.
 - ANCHOR PLATES AND WASHERS AT ANCHOR STUD ENDS SHALL BE SECURED IN PLACE TO PREVENT DISLODGING DURING CASTING OF CONCRETE.
 - FOR GRADE BEAM REINFORCEMENT, SEE DWG. NOS. S-5 AND S-6.

DRAWING TITLE RAILING DETAILS				CONTRACT NO. S-3	
PROJECT NO.				DRAWING NO. S-3	
DRAWING NO.				SHEET 4 OF 7	
DATE				MAY 25, 2017	
REVISION NO.				0	

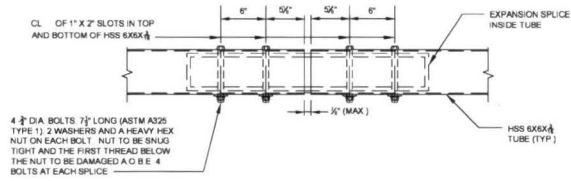
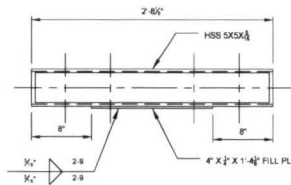
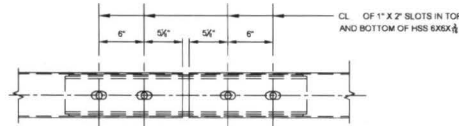
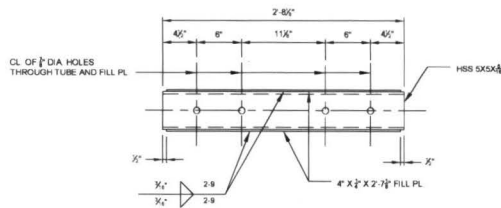
REV.	DESCRIPTION	DATE	APP'D.

DRAWN BY	A. REISER
DESIGNED BY	A. REISER
CHECKED BY	M. ZDENEK
SCALE:	AS SHOWN



3 RAIL STEEL BARRIER CRASH TEST -
BARRIER FOUNDATION AND
INSTALLATION

"IT IS A VIOLATION OF THE PROFESSIONAL LICENSE LAW FOR ANY PERSON TO ALTER THIS DRAWING IN ANY MANNER, UNLESS ACTING UNDER THE DIRECTION OF A LICENSED PROFESSIONAL ENGINEER/ARCHITECT AS APPLICABLE. THE ALTERING ENGINEER/ARCHITECT SHALL AFFIX HIS/HER SEAL AND THE NOTATION 'ALTERED' FOLLOWED BY HIS/HER SIGNATURE AND DATE OF ALTERATION."



EXPANSION SPLICE INSIDE TUBE
SCALE: 1 1/2" = 1'-0"

EXPANSION SPLICE TUBE ASSEMBLY
SCALE: 1 1/2" = 1'-0"

- NOTES:**
- 1 ALL STRUCTURAL STEEL HARDWARE AND ANCHOR STUDS SHALL BE PROVIDED BY THE STEEL FABRICATOR
 - 2 PROTRUSIONS CAUSED BY WELDING OR GALVANIZING ARE NOT PERMITTED ON THE ADJOINING SURFACES OF THE BOX BEAM RAILS, SPLICE TUBES AND FILL PLATES
 - 3 FOR SPLICE LOCATIONS, SEE DWG. NO. S-2

DRAWN BY A. HESER DESIGNED BY A. HESER CHECKED BY M. ZDENEK SCALE: AS SHOWN					3 RAIL STEEL BARRIER CRASH TEST – BARRIER FOUNDATION AND INSTALLATION	DRAWING TITLE	SPLICE DETAILS	CONTRACT NO.	
REV.	DESCRIPTION	DATE	APP'D.					DRAWING NO.	S-4 SHEET 5 OF 7
<small>*IT IS A VIOLATION OF THE PROFESSIONAL LICENSE LAW FOR ANY PERSON TO ALTER THIS DRAWING IN ANY MANNER, UNLESS ACTING UNDER THE DIRECTION OF A LICENSED PROFESSIONAL ENGINEER/ARCHITECT AS APPLICABLE. THE ALTERING ENGINEER/ARCHITECT SHALL AFFIX HIS/HER SEAL AND THE NOTATION "ALTERED BY" FOLLOWED BY HIS/HER SIGNATURE AND DATE OF ALTERATION.*</small>						PROJECT NO.		REVISION NO.	0