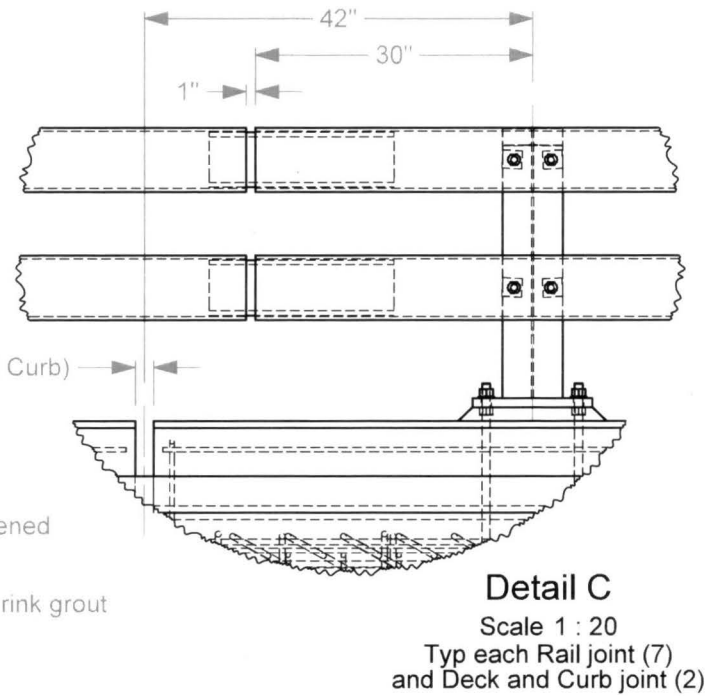
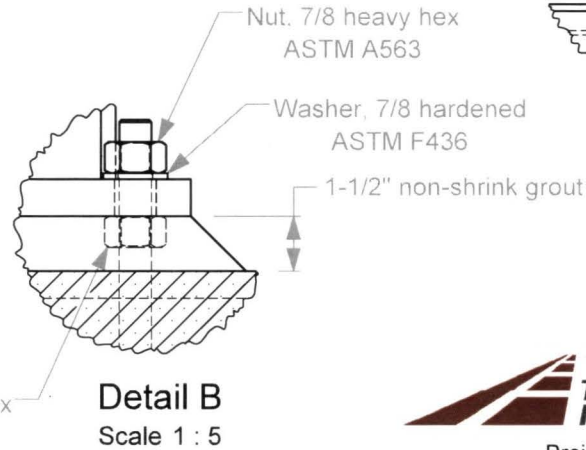
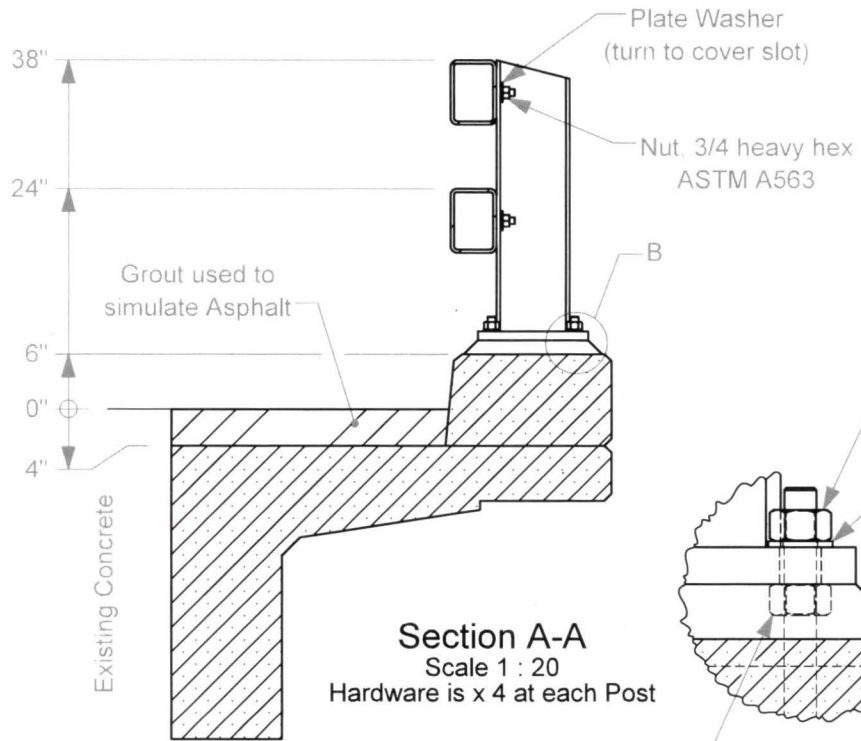
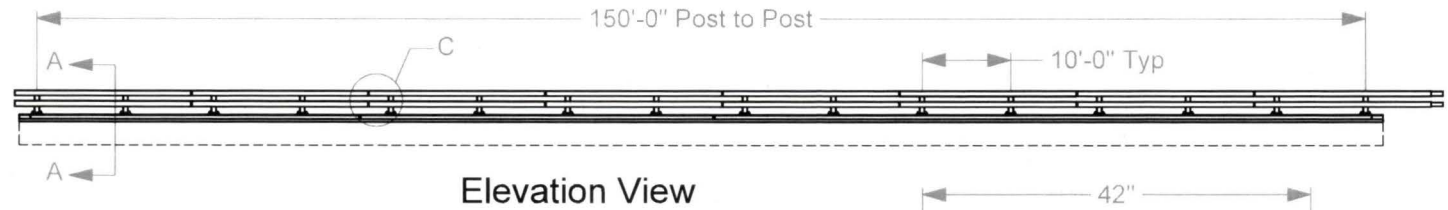
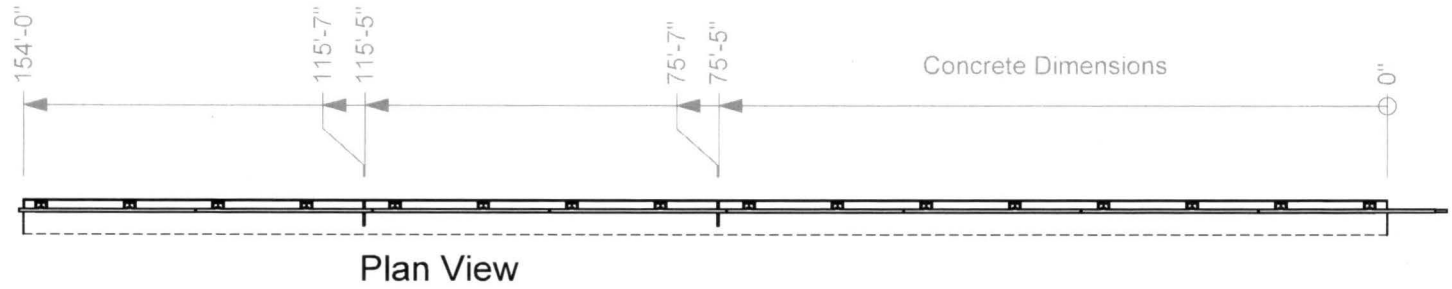


Test Installation



Roadside Safety and Physical Security Division - Proving Ground

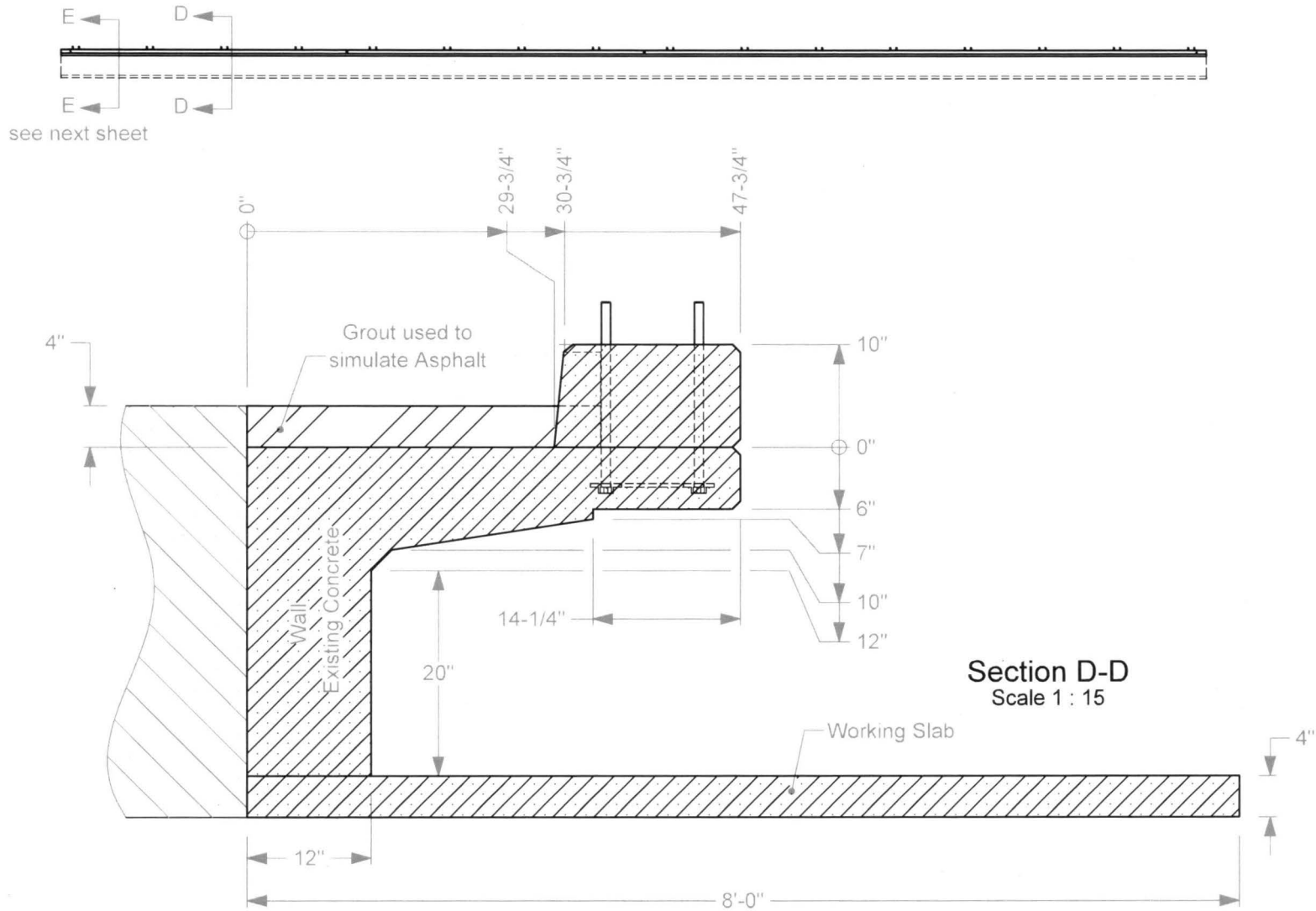
Project #608331 Alaska Bridge Rail

2018-05-14

Drawn by GES Scale 1:250

Sheet 1 of 7 Test Installation

Details, Elevation



2a. Concrete Strength is 5000psi for the Wall and Deck, 3000 psi for the Working Slab, and 4000 psi for the Curb.

2b. Chamfer Field Side edges of Deck, and field side and top edges of end of Curb 3/4" each way as shown.



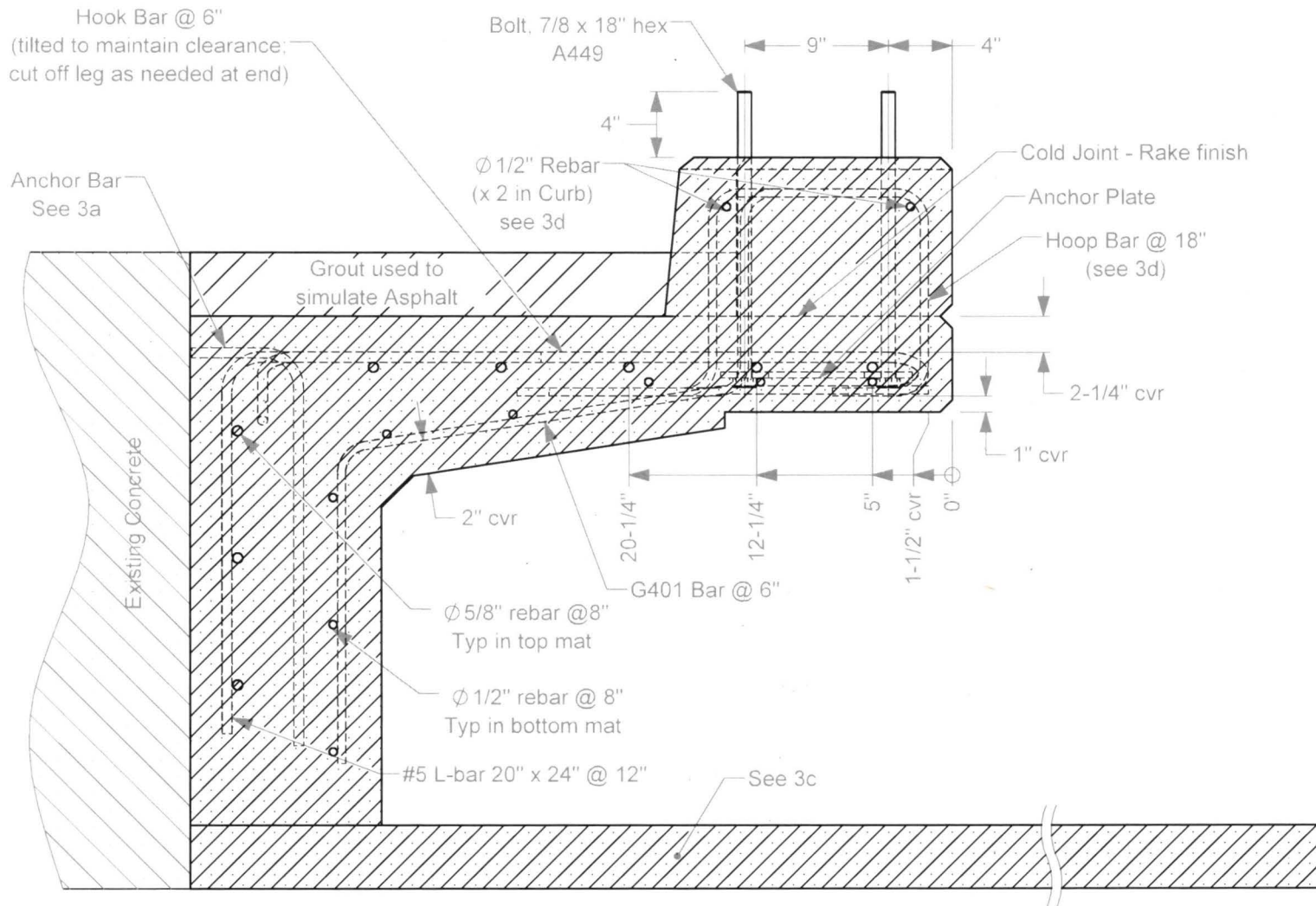
Roadside Safety and
Physical Security Division -
Proving Ground

Project #608331 Alaska Bridge Rail

2018-05-14

Drawn by GES Scale 1:250

Sheet 2 of 7 Details, Elevation



- 3a.** Place the Anchor Bars @ maximum 18" spacing and secure to existing rebar protruding from the runway with minimum 3" weld. (Existing rebar not shown here.)
- 3b.** Minimum rebar lap is 24" for #4 bars and 30" for #5 bars.
- 3c.** Place one mat of Ø1/2" (#4) bars in Working Slab @ 12" each way with ≈1-1/2" cover at top. These bars are not shown here.
- 3d.** Field bend traffic side longitudinal bar and turn Hoop Bars at ends of Curb to maintain cover.
- 3e.** The Anchor Bars will be bare steel, and the bars in the Working Slab may be bare steel. All other bars shall be epoxy coated, and all bars are grade 60.

Section E-E

Scale 1 : 10



Roadside Safety and
Physical Security Division -
Proving Ground

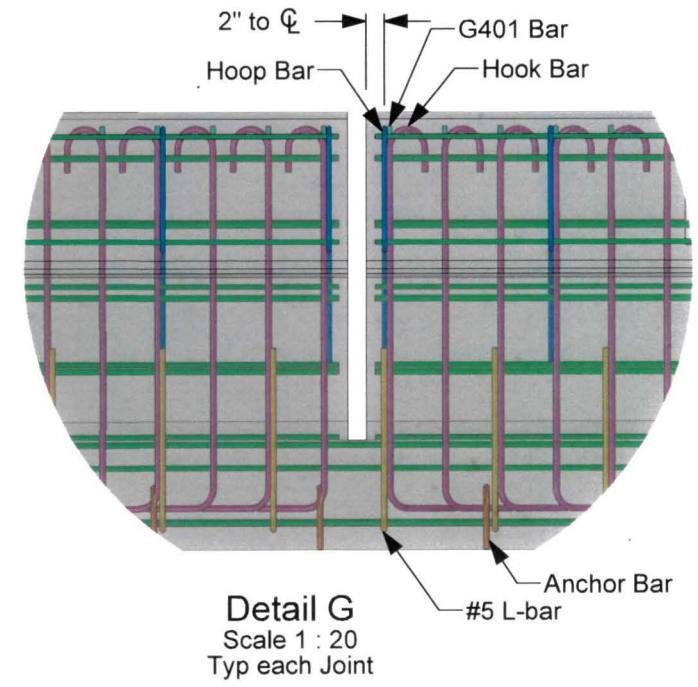
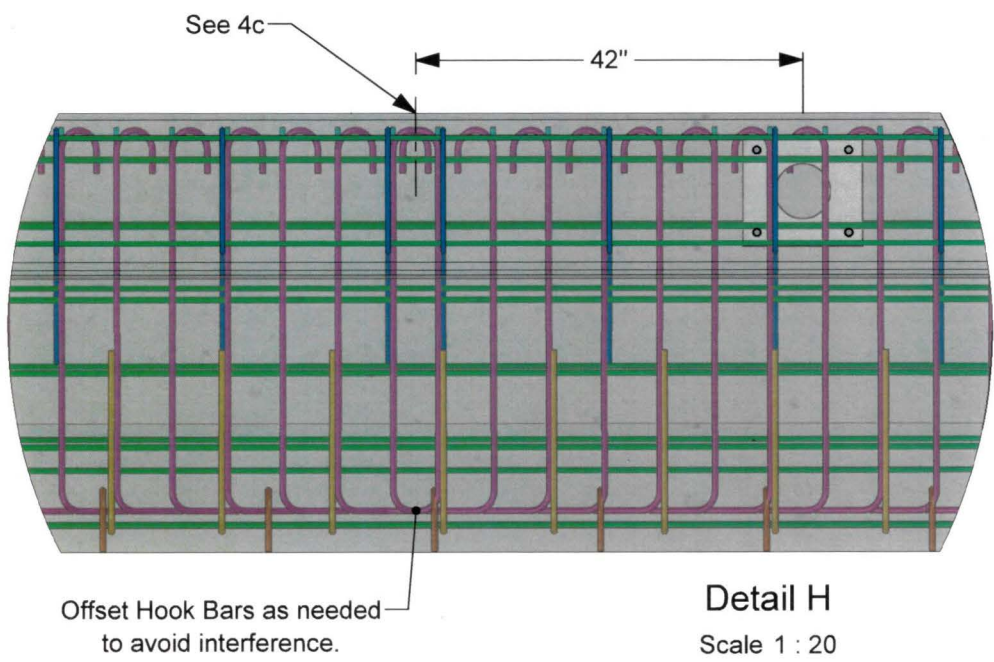
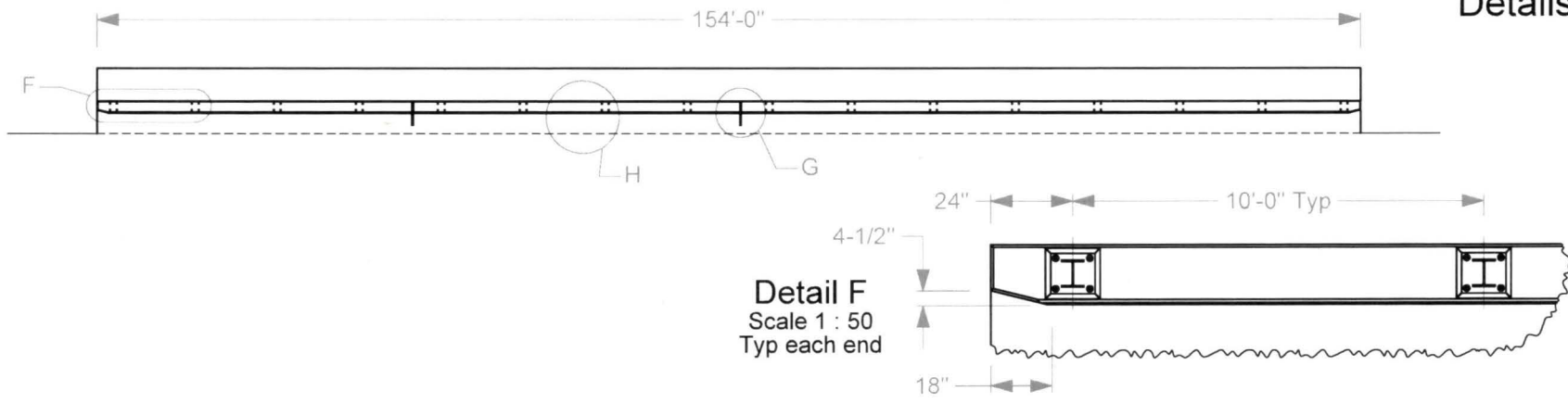
Project #608331 Alaska Bridge Rail

2018-05-14

Drawn by GES Scale 1:10

Sheet 3 of 7 Rebar Details

Details, Plan



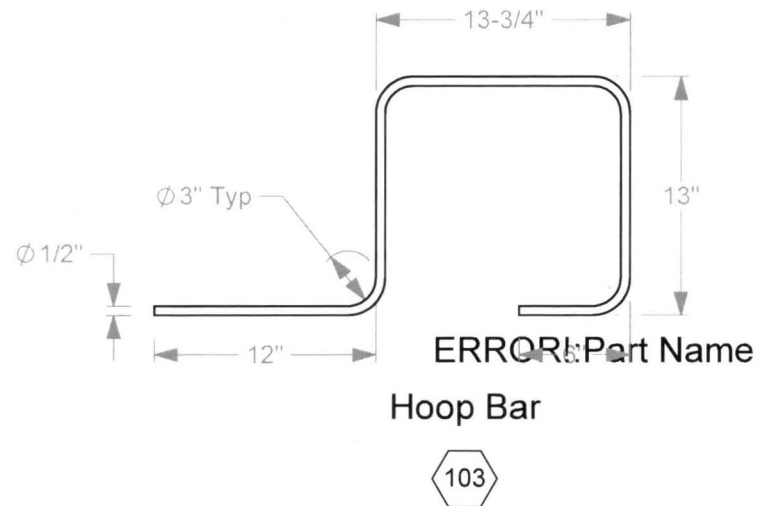
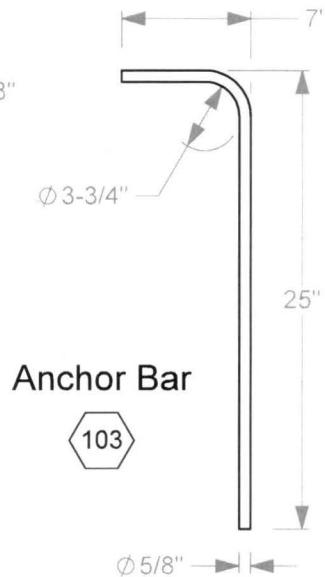
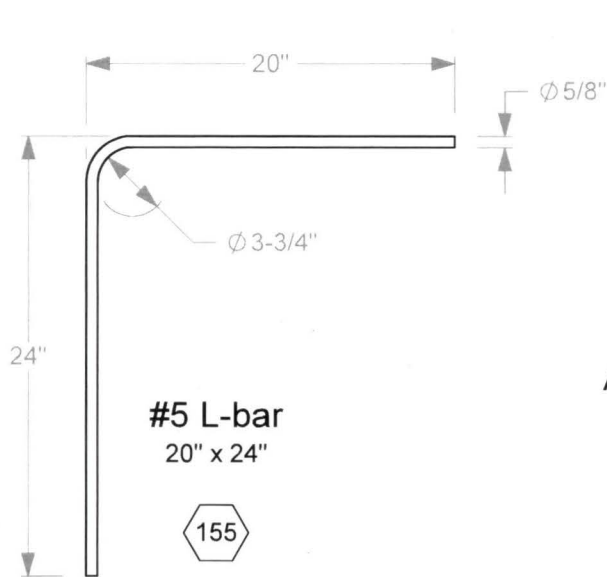
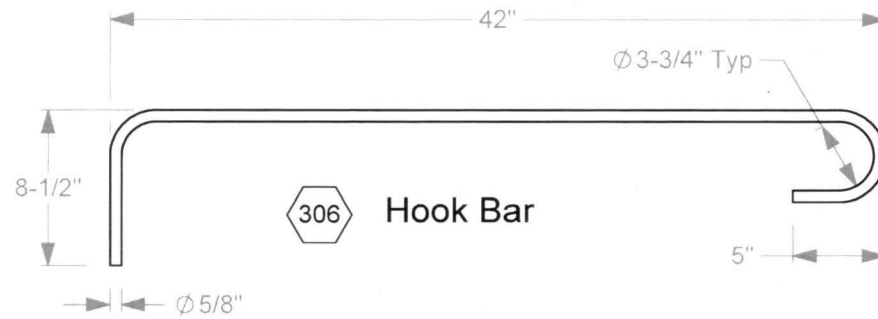
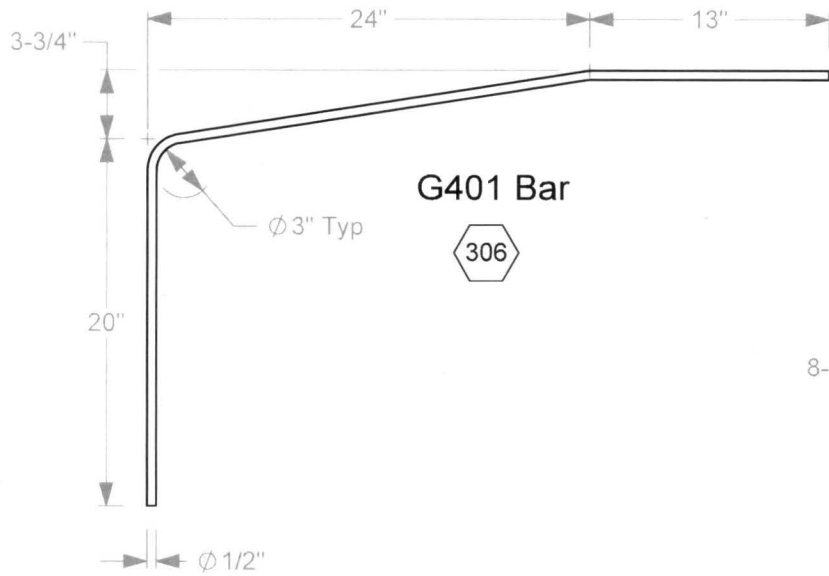
- 4a.** Concrete Strength is 5000psi for the Wall and Deck, 3000 psi for the Working Slab, and 4000 psi for the Curb.
- 4b.** Chamfer Field Side edges of Deck, and field side and top edges at end of Curb 3/4" each way as shown.
- 4c.** Rebar placement shown in Detail View at joint is typical each joint. Adjust spacing and Hook Bar direction as needed at location shown.



Roadside Safety and Physical Security Division - Proving Ground

Project #608331 Alaska Bridge Rail 2018-05-14
 Drawn by GES Scale 1:250 Sheet 4 of 7 Details, Plan

T:\1-ProjectFiles\608331-Alaska - Williams\Drafting, 608331 1-31608331 Drawing



5a. All bent bars, and all longitudinal bars in the Curb, Deck and Wall shall be epoxy coated. All bars are grade 60..



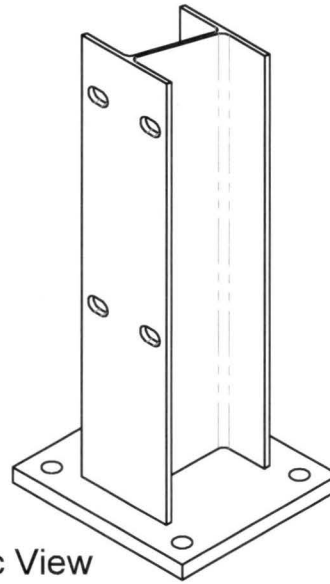
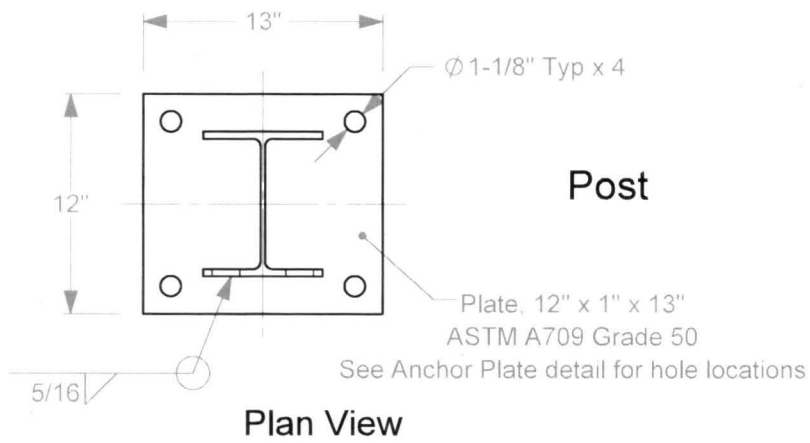
Roadside Safety and Physical Security Division - Proving Ground

Project #608331 Alaska Bridge Rail

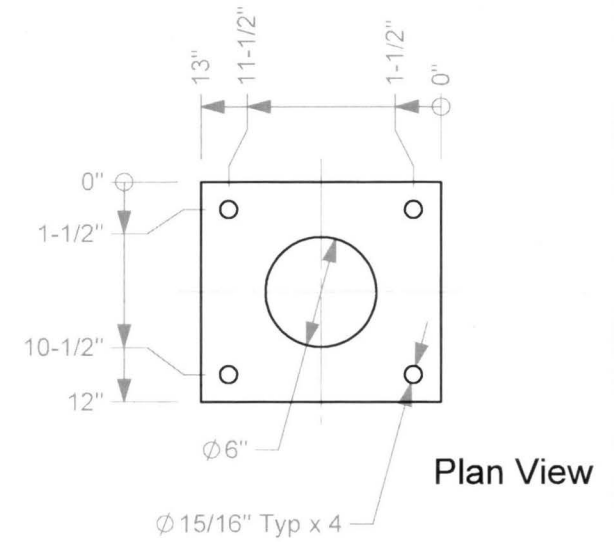
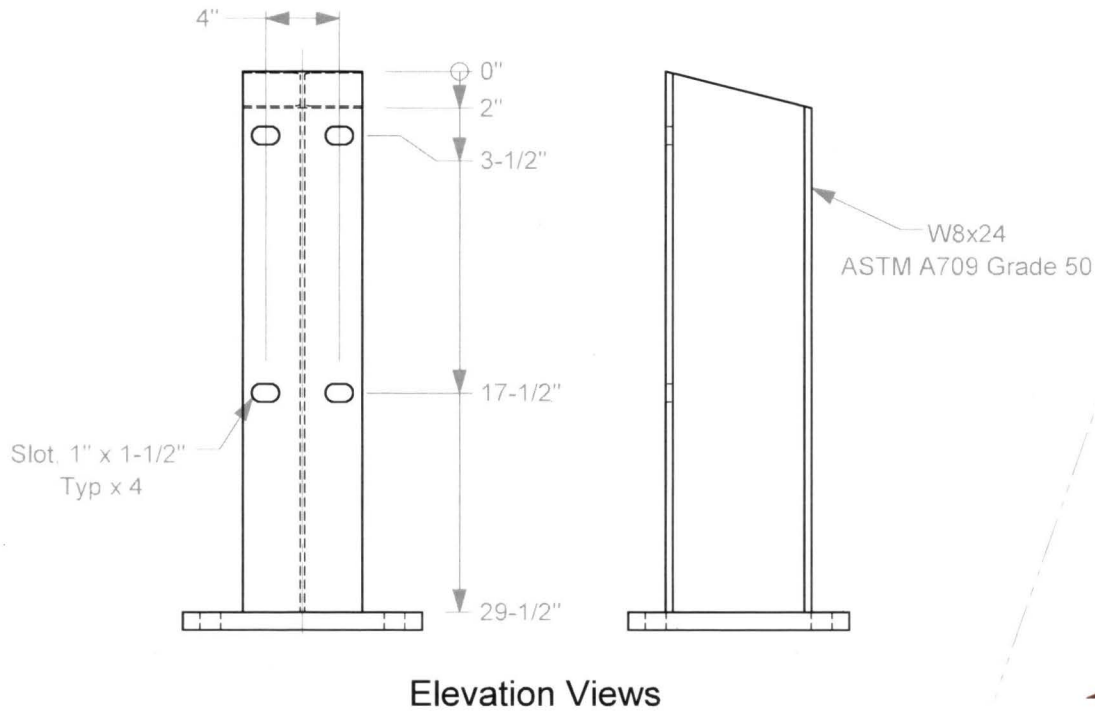
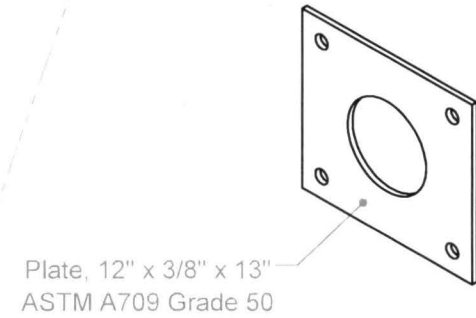
2018-05-14

Drawn by GES Scale 1:10

Sheet 5 of 7 Rebar



Anchor Plate



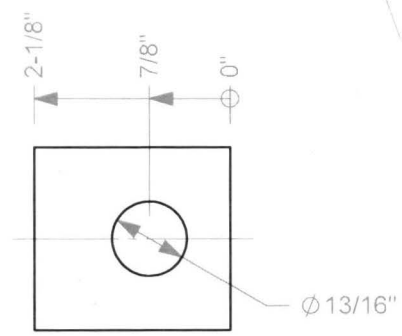
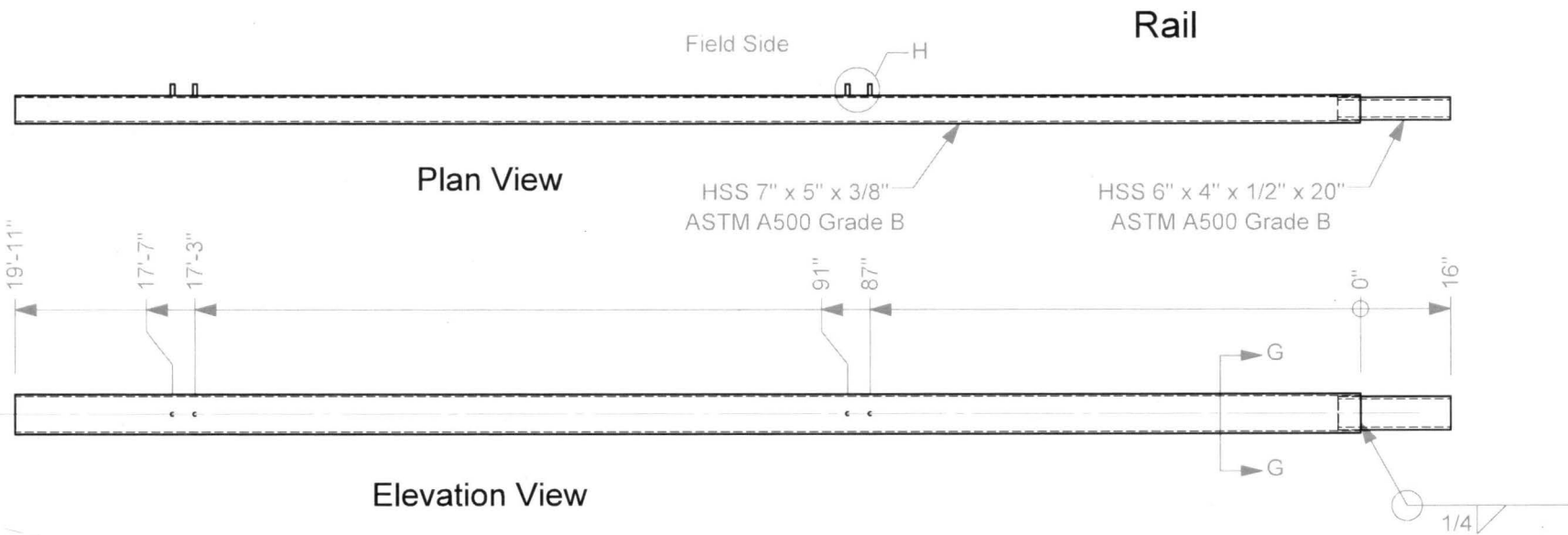
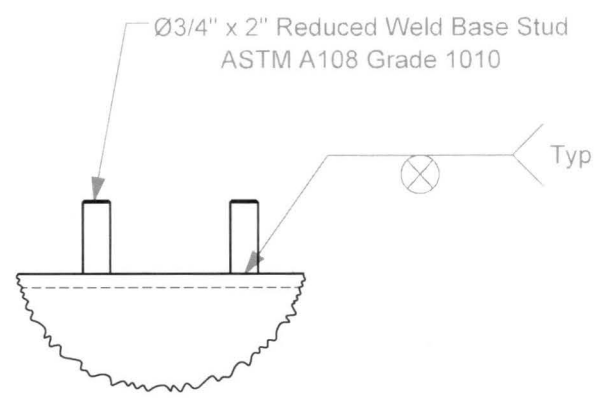
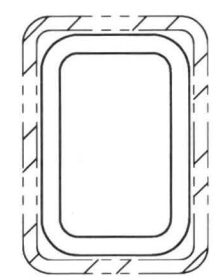


Plate Washer
 Plate, 2" x 1/4" x 2 1/8"
 ASTM A709 Grade 36



Detail H
 Scale 1 : 5



Section G-G
 Scale 1 : 5



Roadside Safety and
 Physical Security Division -
 Proving Ground