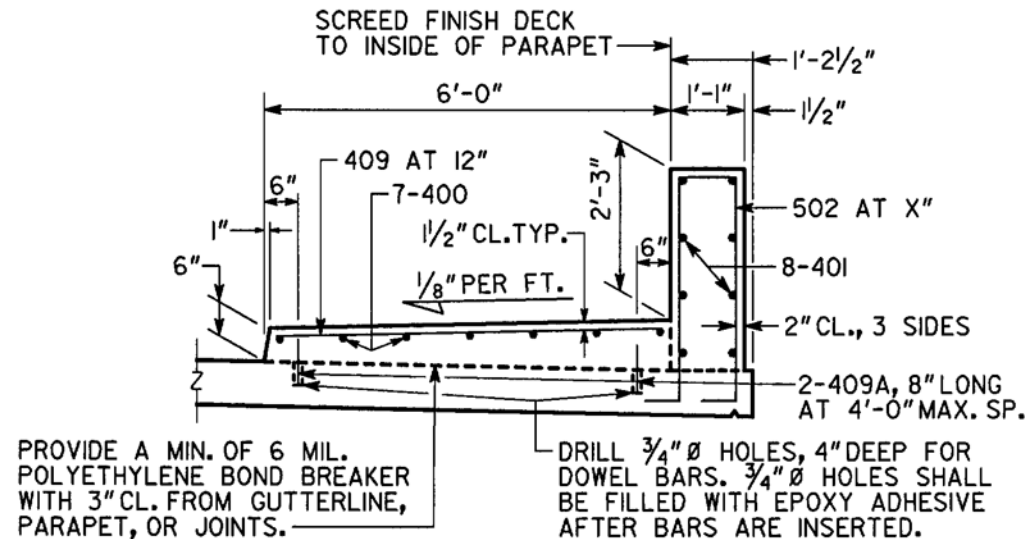


Vertical Parapet with Single-Pipe Aluminum Handrail

PLACE TRANSVERSE SIDEWALK MARKINGS
ON SIDEWALK SPACED AT 5'-0"±.

COST OF BOND BREAKER AND EPOXY ADHESIVE TO BE
INCLUDED IN PRICE BID FOR SUPERSTRUCTURE ITEMS.



2'-3" Vertical Parapet and Sidewalk
(Used With 1'-3" Single Pipe Aluminum Hand Rail)