

LOW-PROFILE, CONCRETE BARRIER



LPB01

SHEET NO.

DATE:

1 of 6

8/31/2007

INTENDED USE

Low-Profile, Concrete Barrier for Test Level 2 Applications should be used in locations where a working width of 18" [457] is provided. The concrete used for the bridge rail should have a minimum compressive strength of 4,500 psi [31.03 MPa]. The Low-Profile, Concrete Barrier is TL-3 NCHRP 350 accepted.

COMPONENTS

Unit Length = -" [-]

DESIGNATOR	COMPONENT	SYSTEM	NUMBER
-	See Bill of Bars		-

ACCEPTANCE

FHWA Acceptance Letter B116, March 27, 2003.

REFERENCES

Polivka, K.A., Faller, R.K., Sicking, D.L., Rohde, J.R., Reid, J.D., and Holloway, J.C., *Development of a Low-Profile Bridge Rail for Test Level 2 Applications*, Final Report to the Midwest State s Regional Pooled Fund Program, Transportation Research Report No. TRP-03-109-02, Project No. SPR-3(017)-Year 11, Midwest Roadside Safety Facility, University of Nebraska-Lincoln, August 20, 2002.

CONTACT INFORMATION

Midwest Roadside Safety Facility
E527 Nebraska Hall
Lincoln, NE 68588-0529
(402) 472-0965
Email: mwrsf@unl.edu
Website: <http://mwrsf.unl.edu/>



LOW-PROFILE, CONCRETE BARRIER

LPB01

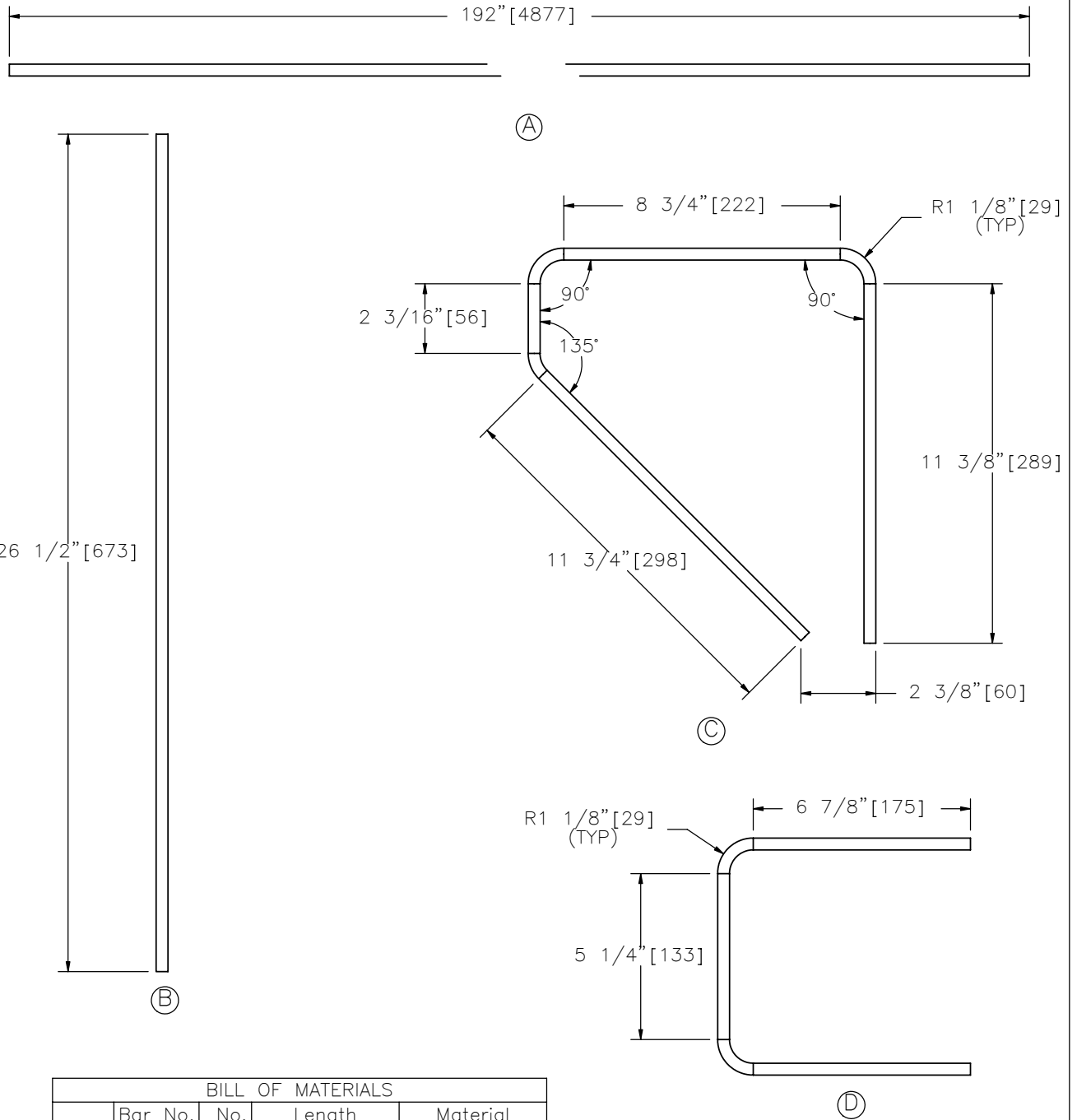
SHEET NO.

DATE:

2 of 6

8/31/2007





BILL OF MATERIALS				
	Bar No.	No.	Length	Material
A	3	12	192"[4877]	A615 Gr.60
B	3	2	26 1/2"[673]	A615 Gr.60
C	3	3	37 1/2"[953]	A615 Gr.60
D	3	6	21 7/8"[556]	A615 Gr.60

LOW-PROFILE, CONCRETE BARRIER



LPB01

SHEET NO.

DATE:

3 of 6

8/31/2007

PAGE INTENTIONALLY LEFT BLANK

LOW-PROFILE, CONCRETE BARRIER

LPB01

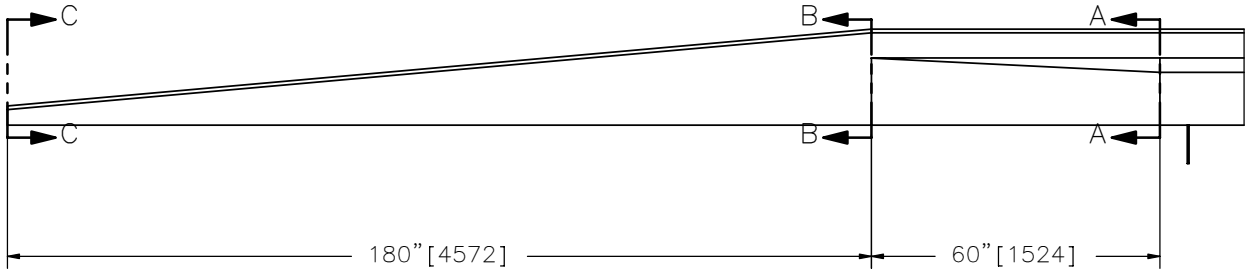
SHEET NO.

DATE:

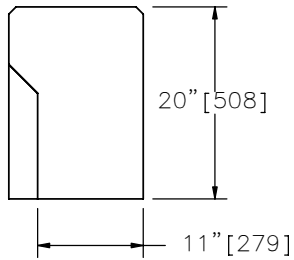
4 of 6

8/31/2007

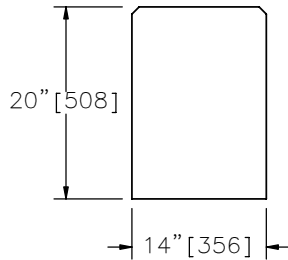




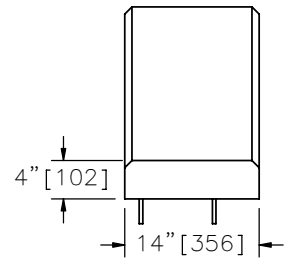
Note: Steel Reinforcement Not Shown



SECTION A-A
SCALE 1 : 20



SECTION B-B
SCALE 1 : 20



SECTION C-C
SCALE 1 : 20

LOW-PROFILE, CONCRETE BARRIER



LPB01

SHEET NO.

DATE:

5 of 6

8/31/2007

PAGE INTENTIONALLY LEFT BLANK

LOW-PROFILE, CONCRETE BARRIER

LPB01

SHEET NO.

DATE:

6 of 6

8/31/2007

