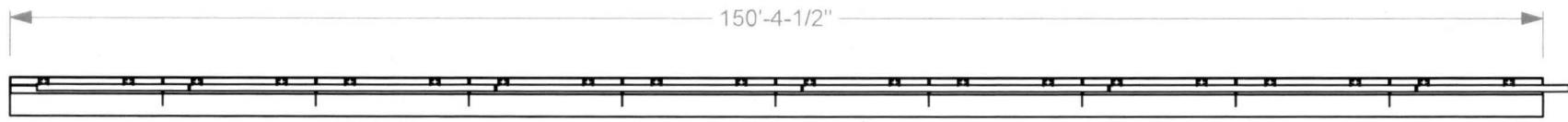
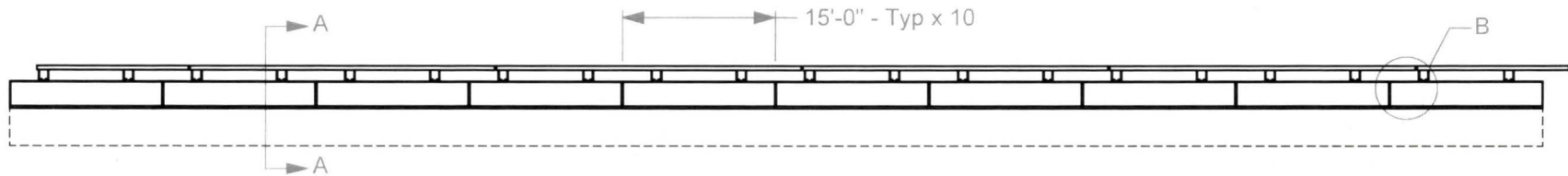


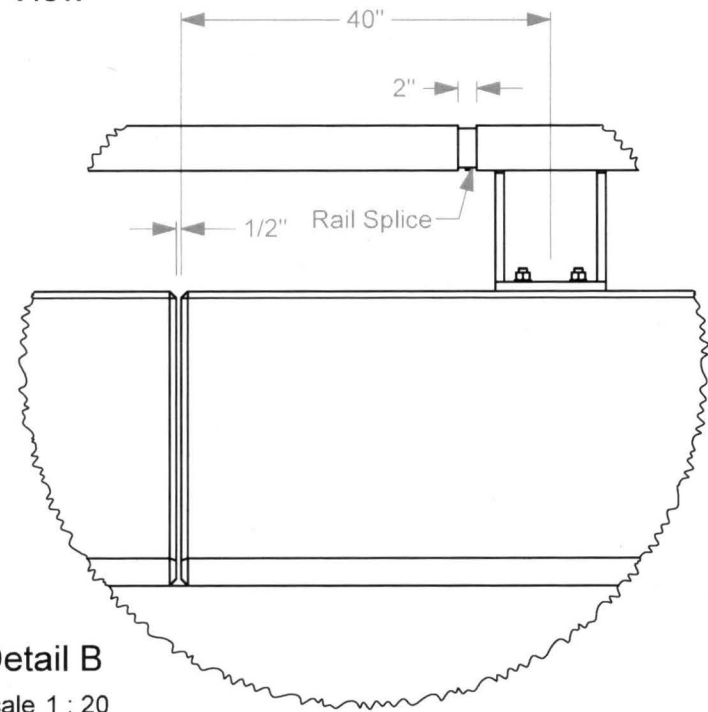
Test Installation



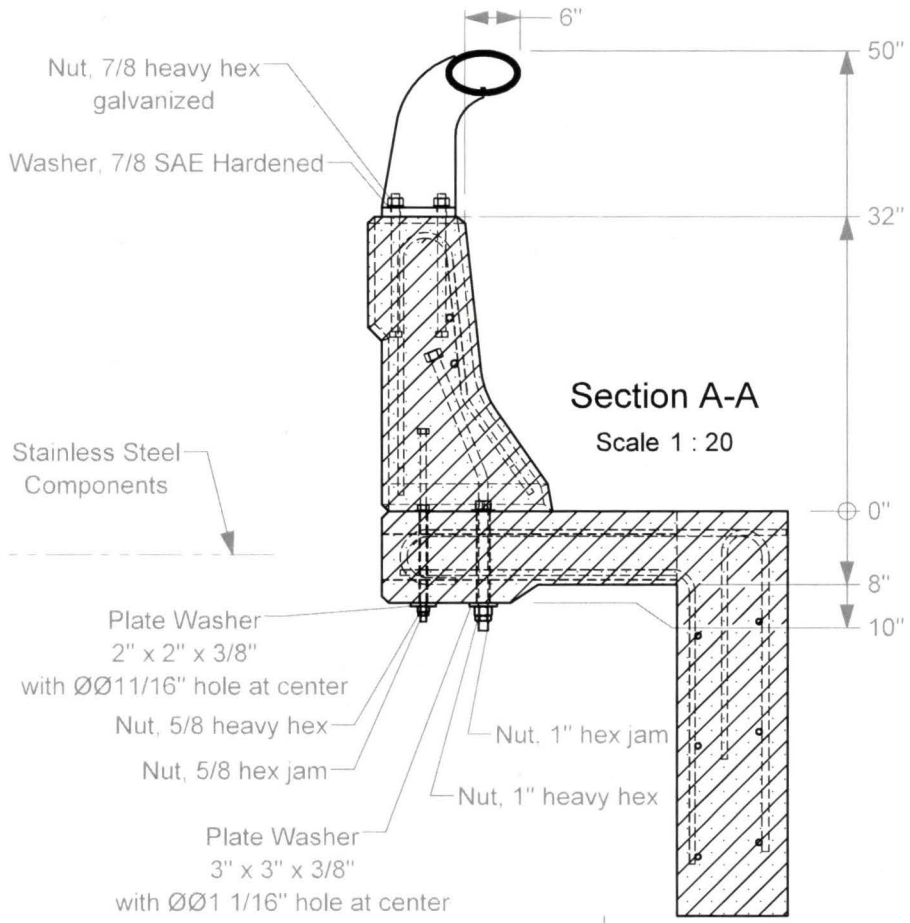
Plan View



Elevation View



Detail B
Scale 1 : 20



Section A-A
Scale 1 : 20

Nut, 7/8 heavy hex galvanized
Washer, 7/8 SAE Hardened

Stainless Steel Components

Plate Washer
2" x 2" x 3/8"
with ØØ11/16" hole at center
Nut, 5/8 heavy hex
Nut, 5/8 hex jam

Plate Washer
3" x 3" x 3/8"
with ØØ1 1/16" hole at center
Nut, 1" heavy hex

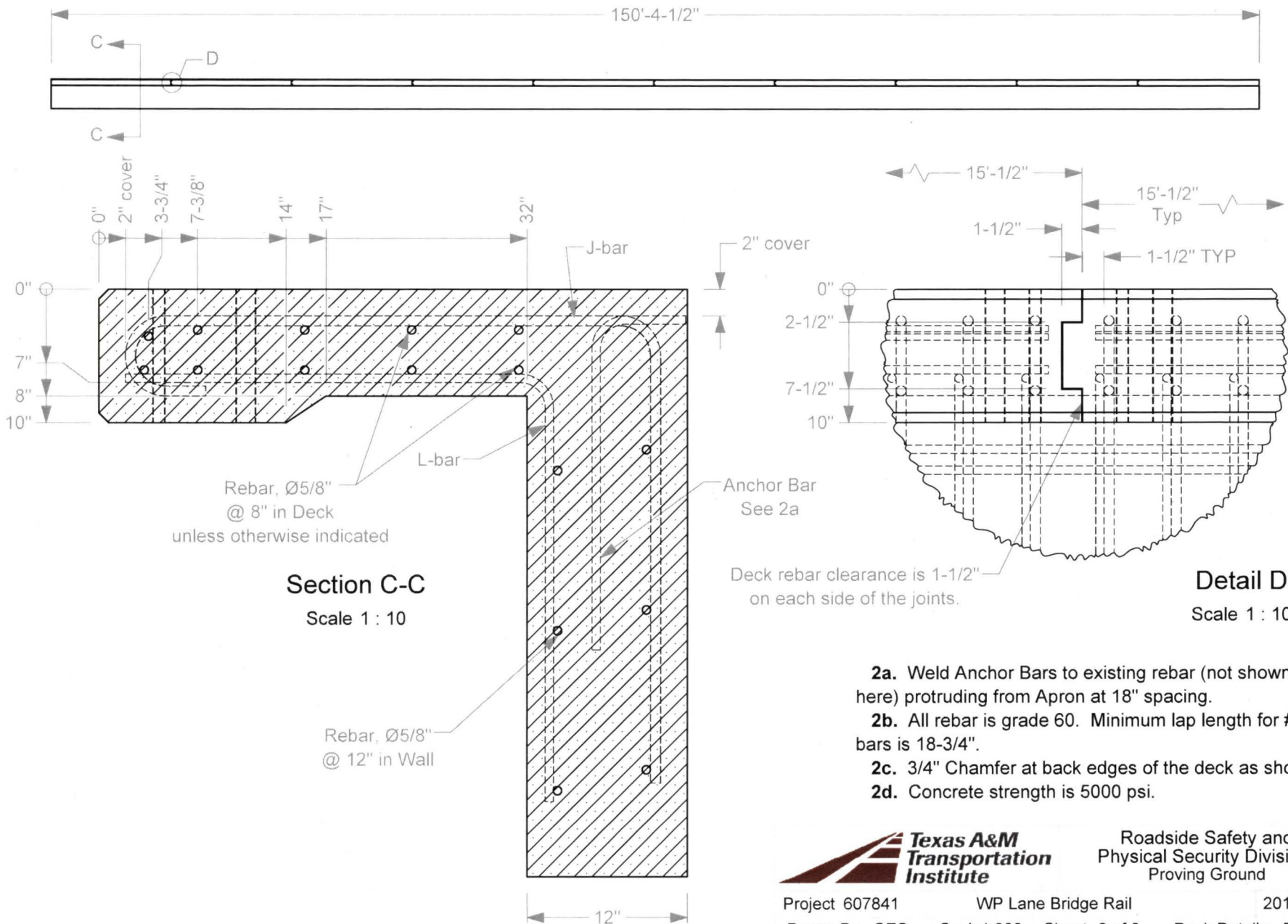


Roadside Safety and Physical Security Division - Proving Ground

T:\1-ProjectFiles\607841 - WP Lane Jr. Bridge - Williams\Drafting, 607841\607841 Drawing

Deck Details - Elevation

(from Field Side)



Section C-C
Scale 1 : 10

Detail D
Scale 1 : 10

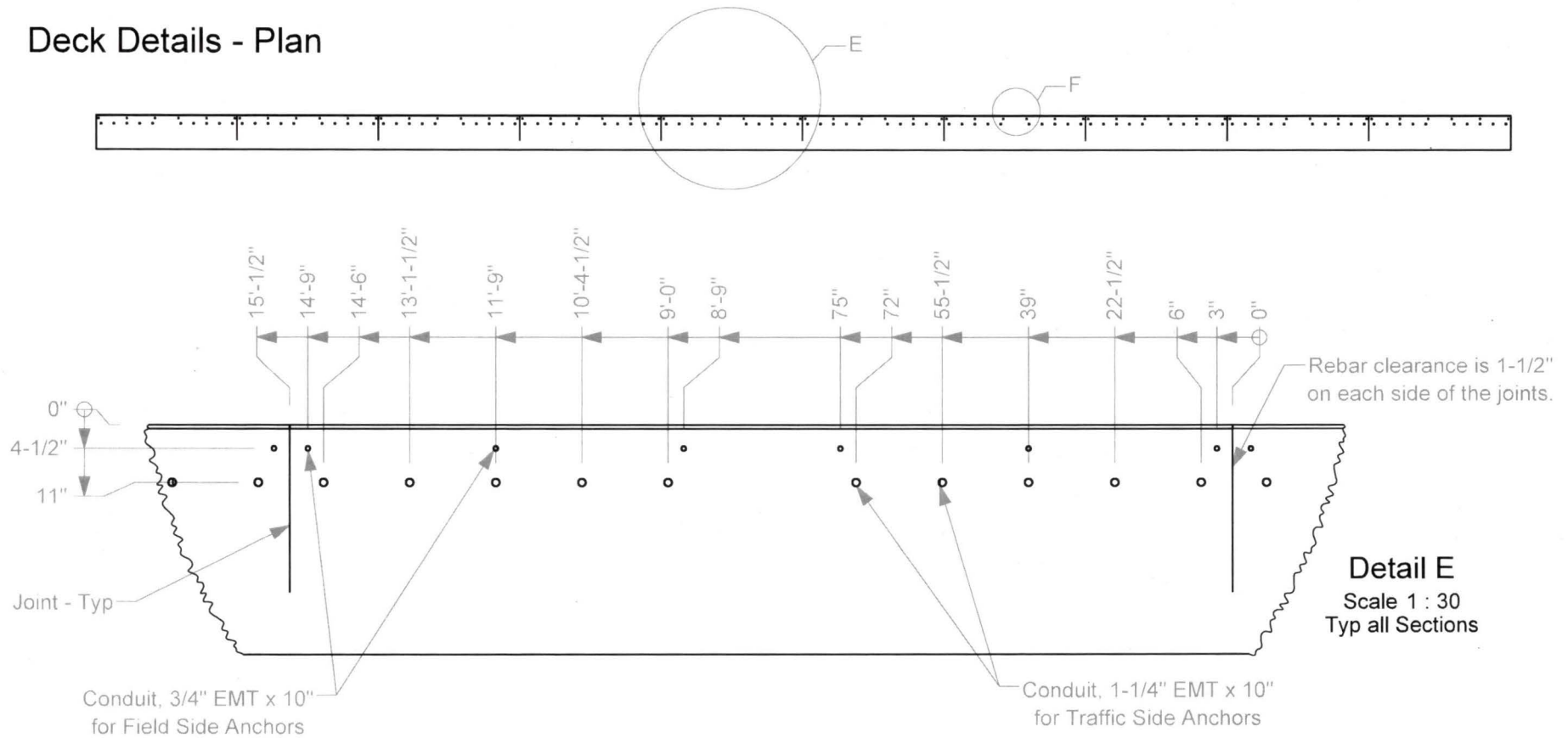
- 2a.** Weld Anchor Bars to existing rebar (not shown here) protruding from Apron at 18" spacing.
- 2b.** All rebar is grade 60. Minimum lap length for #5 bars is 18-3/4".
- 2c.** 3/4" Chamfer at back edges of the deck as shown.
- 2d.** Concrete strength is 5000 psi.



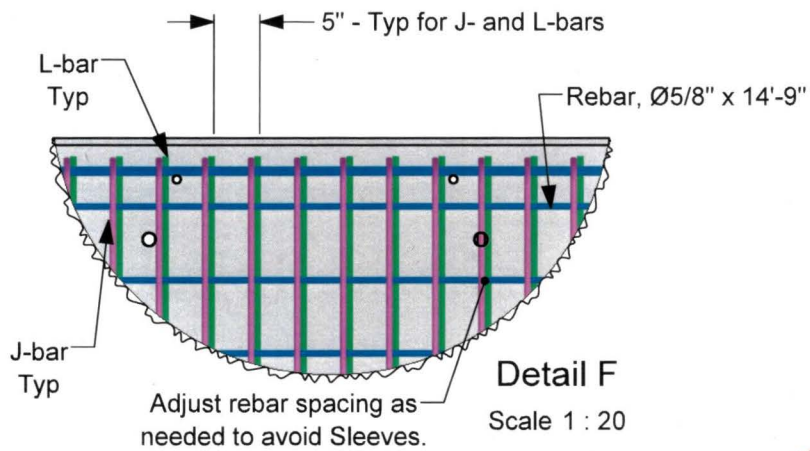
Roadside Safety and
Physical Security Division -
Proving Ground

T:\1-ProjectFiles\607841 - WP Lane Jr. Bridge - Williams\Drafting, 607841\607841 Drawing

Deck Details - Plan



Detail E
Scale 1 : 30
Typ all Sections

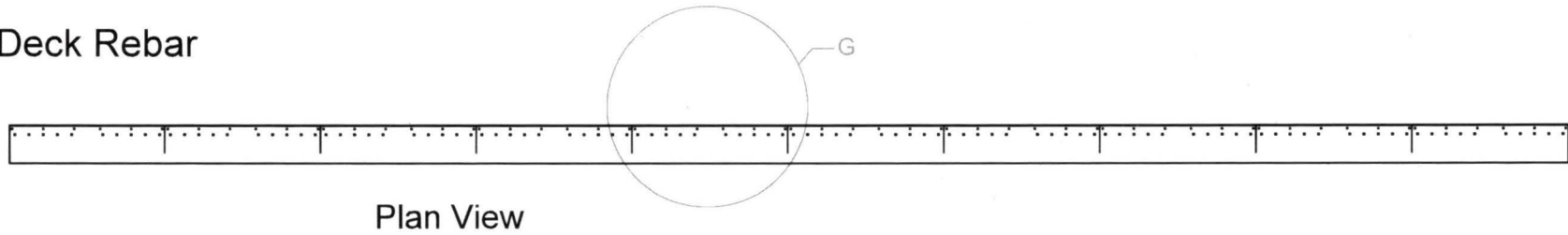


Detail F
Scale 1 : 20



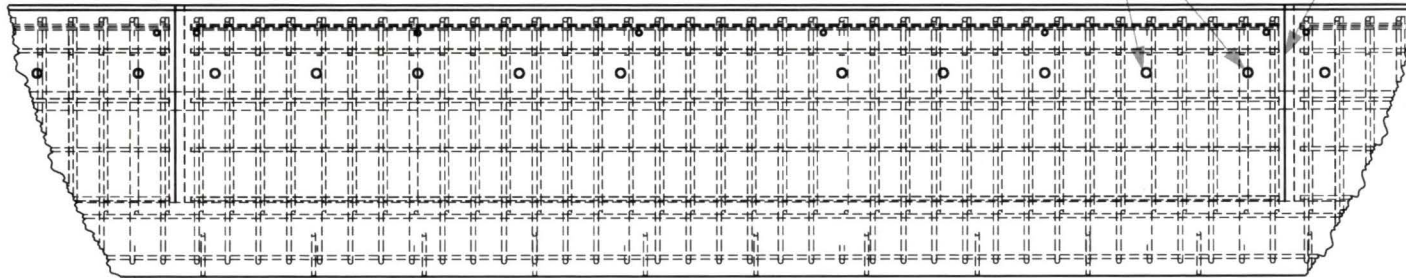
Roadside Safety and Physical Security Division - Proving Ground

Deck Rebar

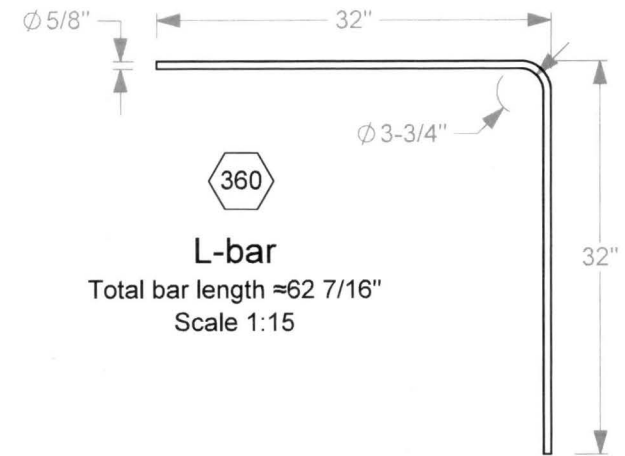
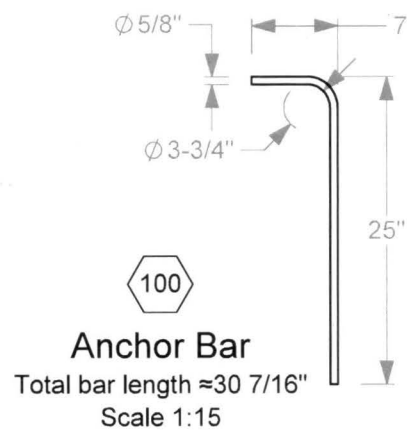
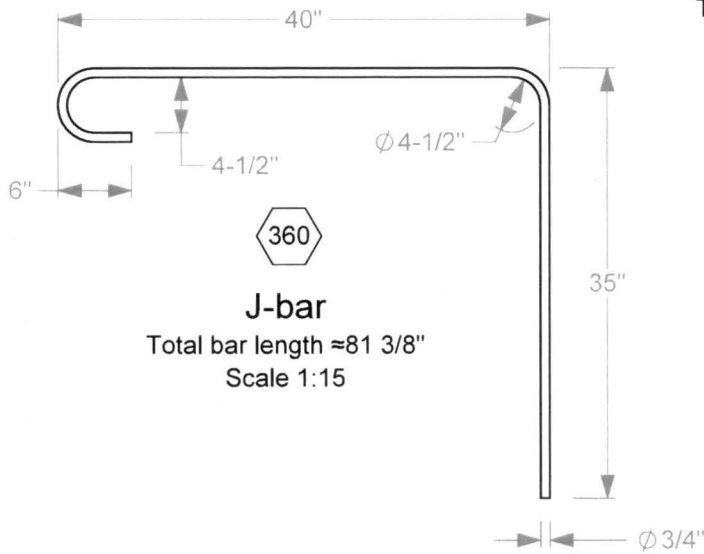


Adjust rebar spacing as needed to avoid Sleeves.

Rebar clearance is 1-1/2" on each side of the joints.



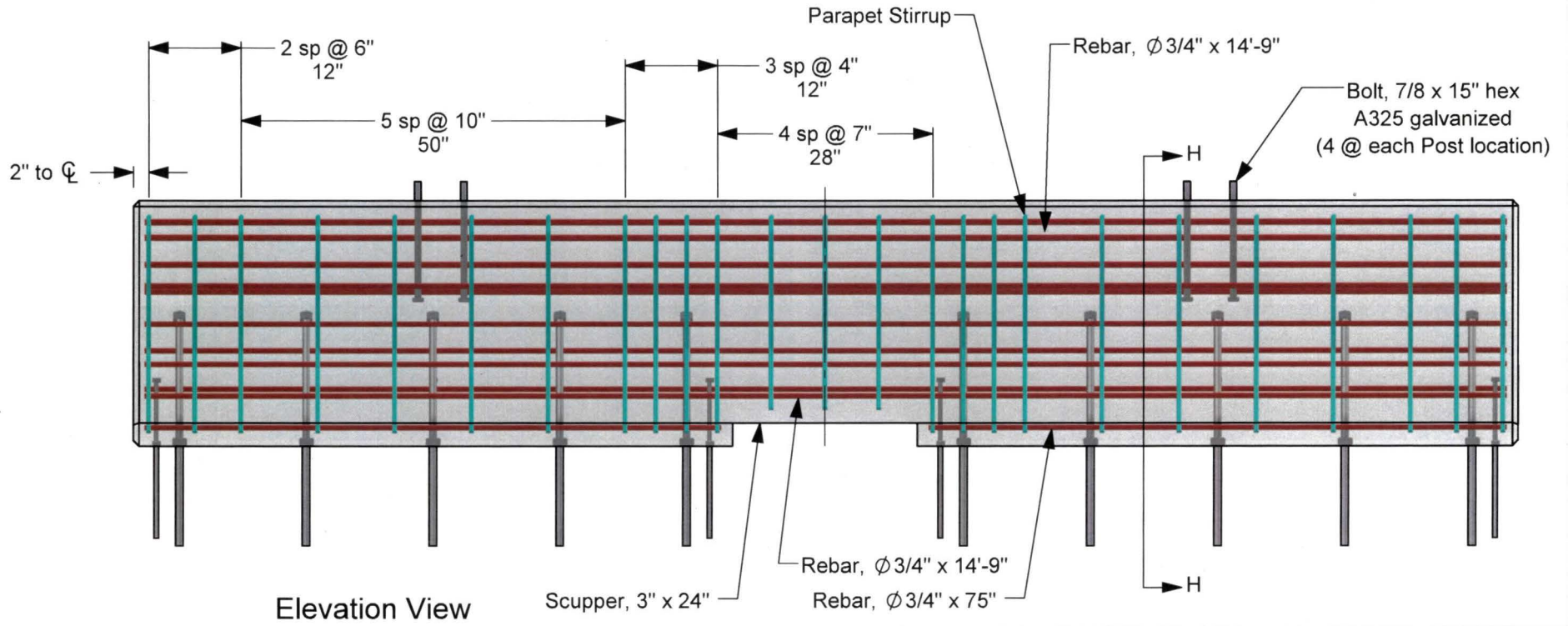
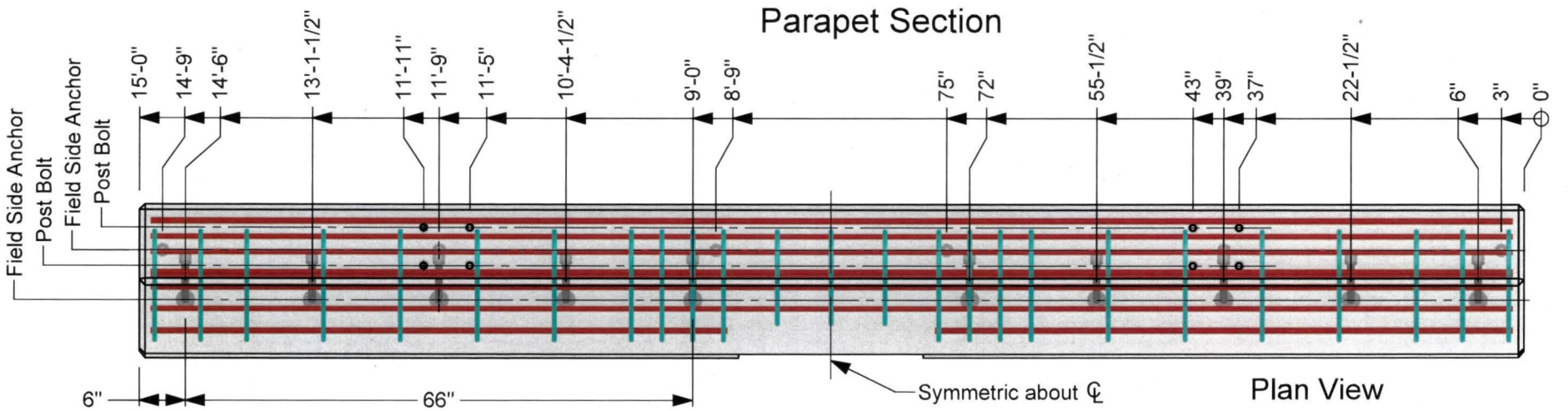
Detail G
Scale 1 : 30
Typ all Sections



4a. The numerals in hexagons indicate the quantity needed for each Bar.



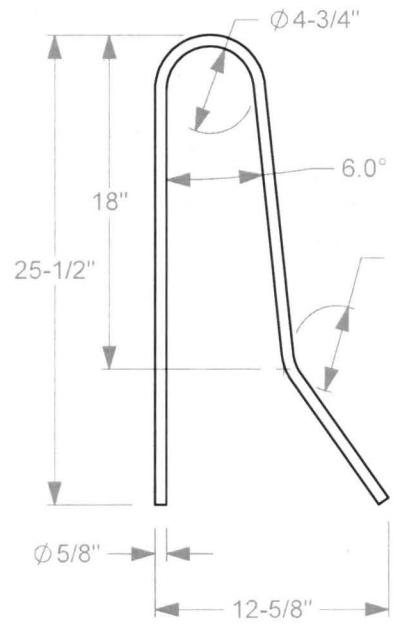
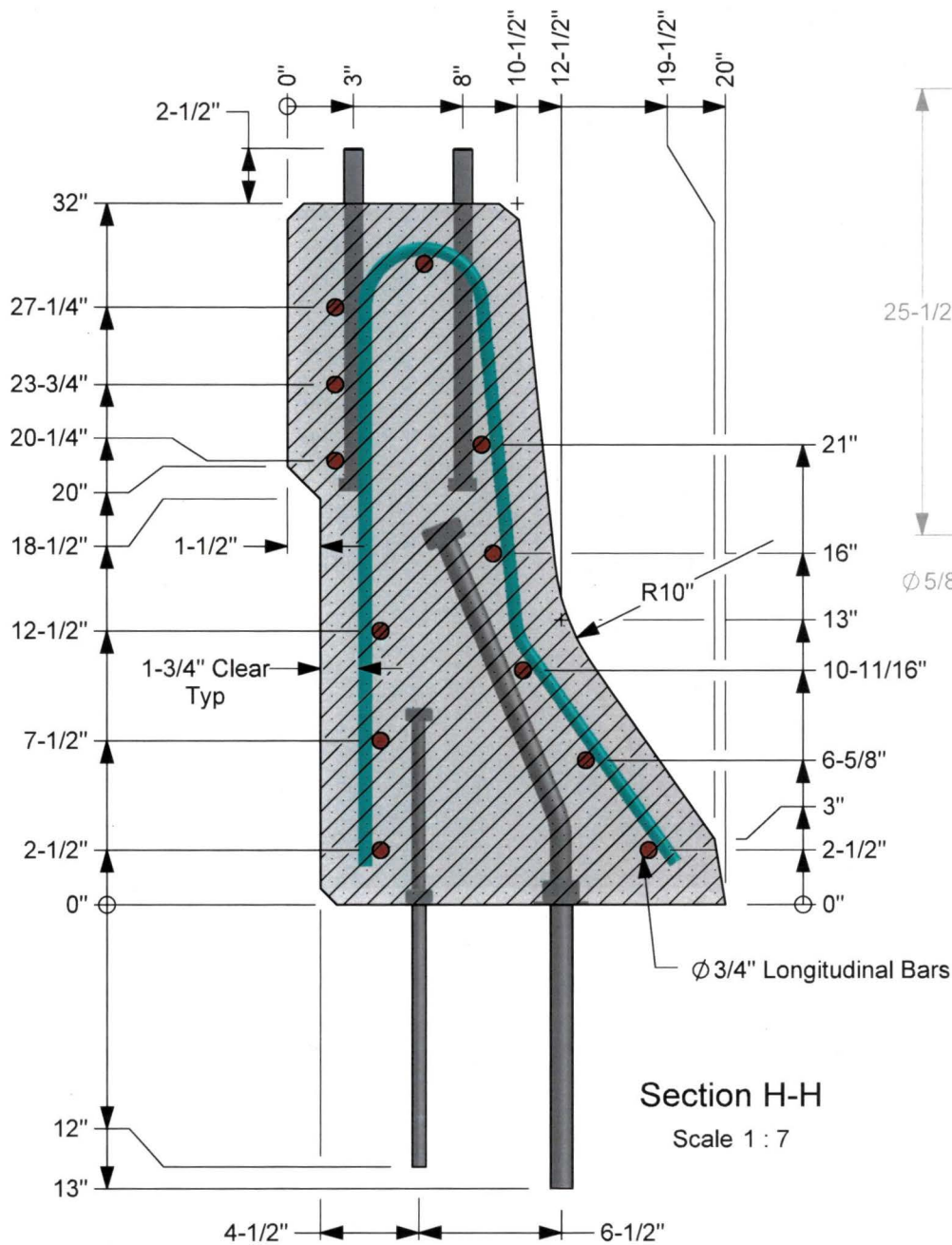
Roadside Safety and
Physical Security Division -
Proving Ground



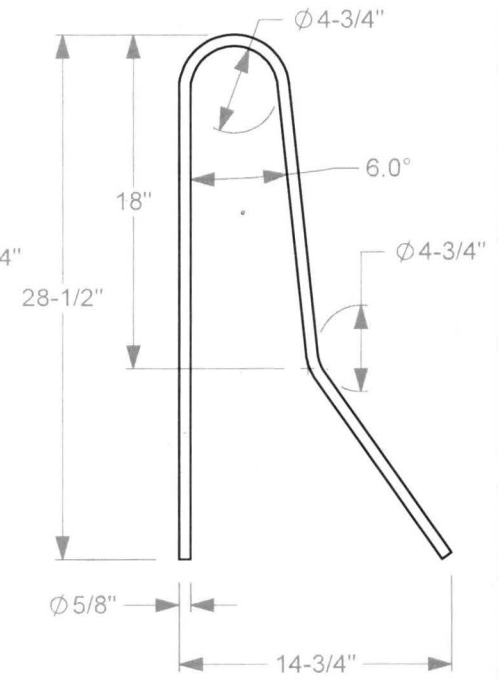
5a. Concrete strength is 5000 psi.



Roadside Safety and Physical Security Division - Proving Ground



3
Scupper Stirrup
Total rebar length ≈ 54 15/16"

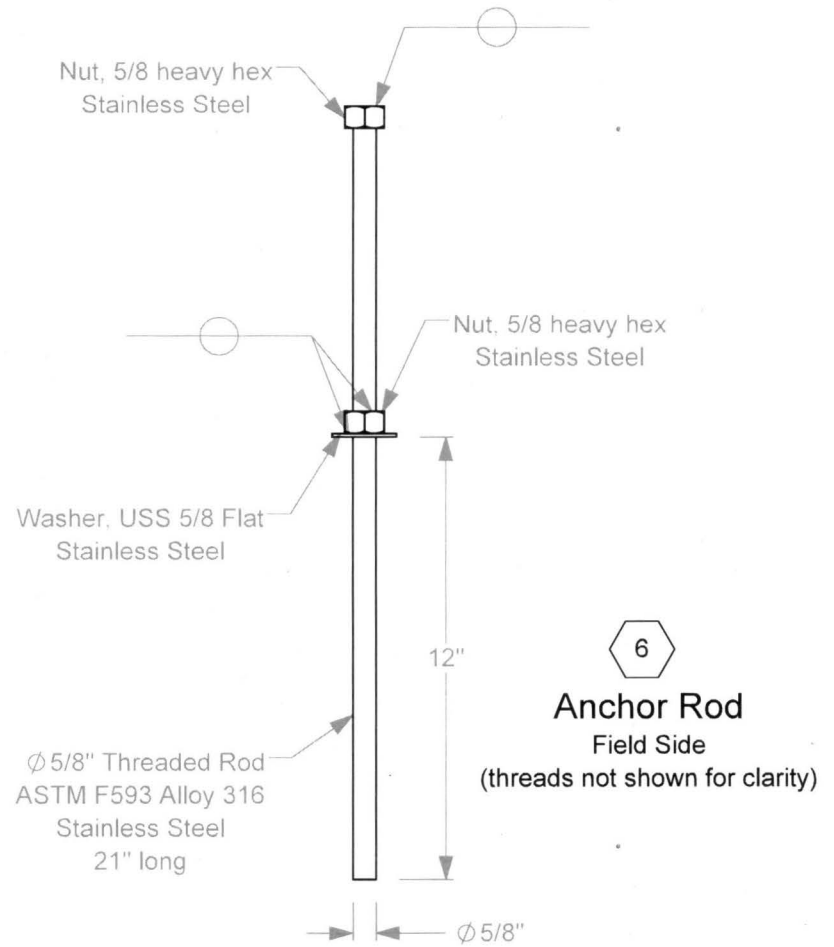
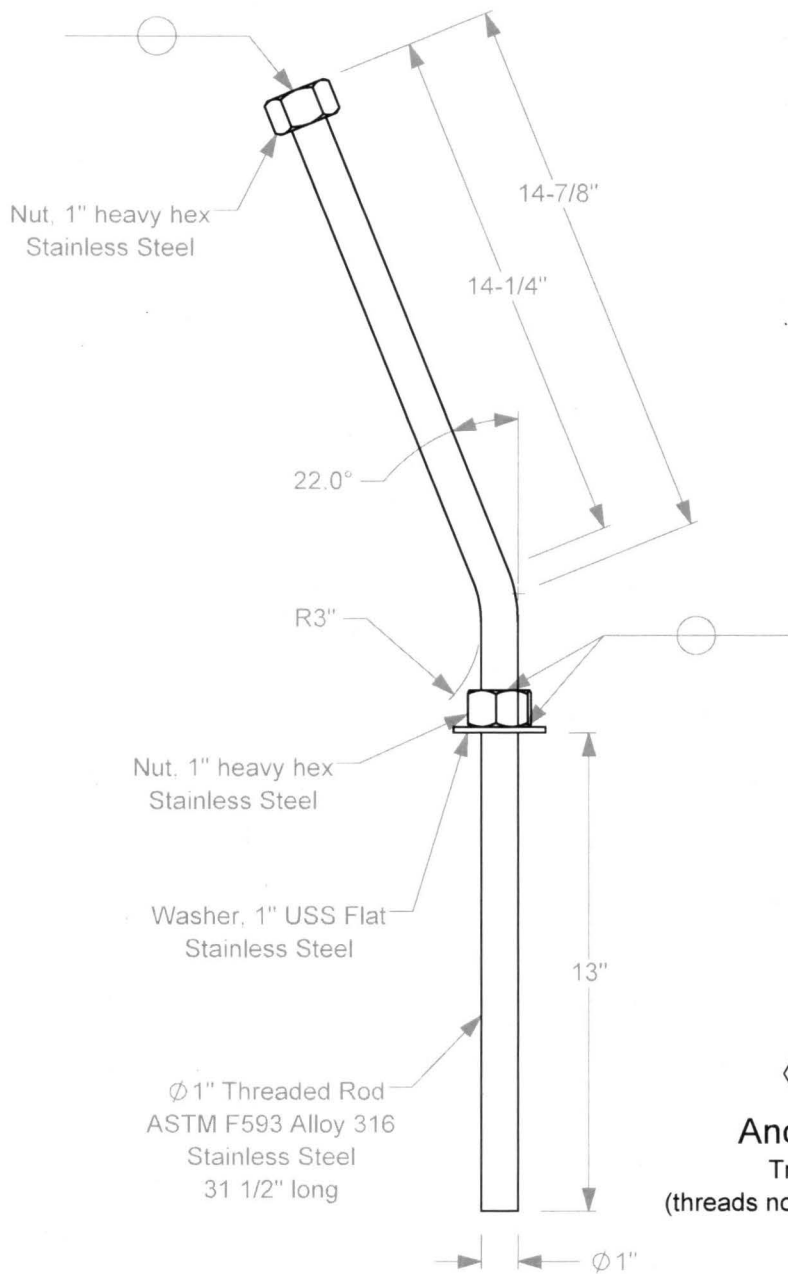


22
Parapet Stirrup
Total rebar length ≈ 61 9/16"

6a. The numerals in hexagons indicate the quantity needed for each Parapet segment. The length dimensions are given as a reference only. The individual dimensions take precedence in the event of a conflict.



Roadside Safety and
Physical Security Division -
Proving Ground



7a. The numerals in hexagons indicate the quantity needed for each Parapet segment.



Roadside Safety and
Physical Security Division -
Proving Ground

Project #607841 WP Lane Bridge Rail

2017-09-13

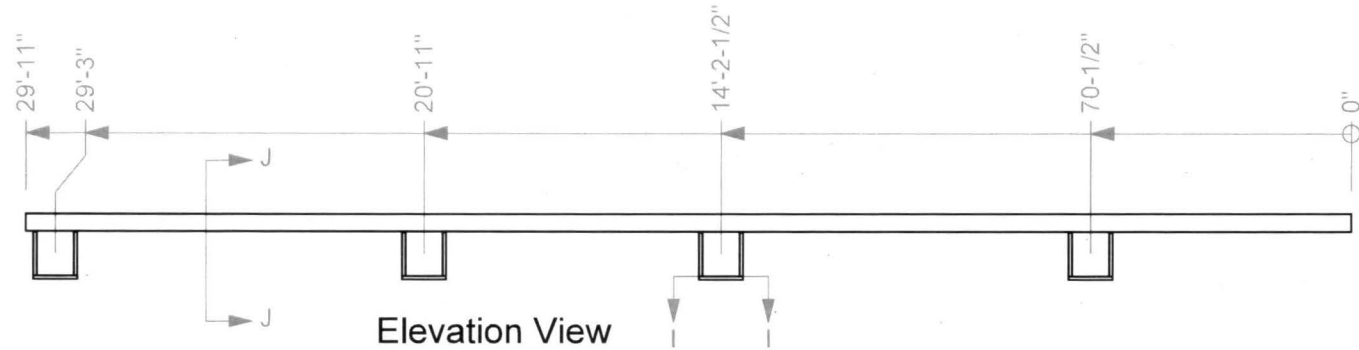
Drawn by GES

Scale 1:5

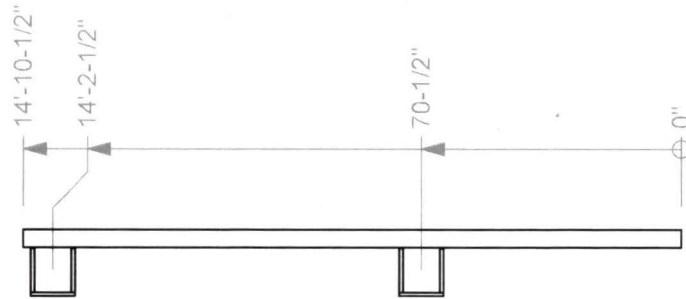
Sheet 7 of 9 Anchor Rods

Rail Details

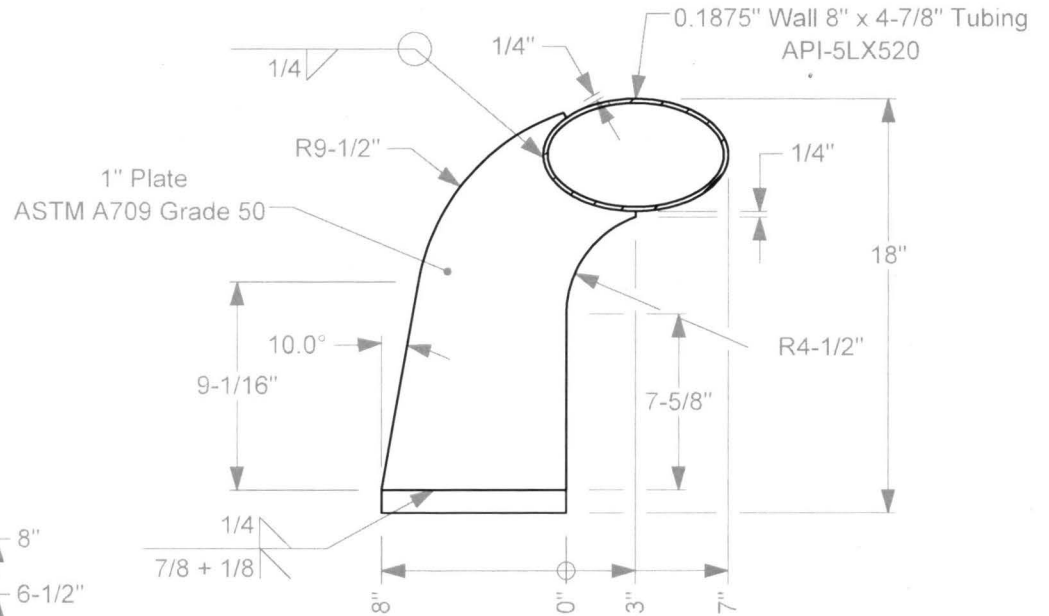
Sections I-I and H-H are typical for each Rail type



Elevation View
Center Section

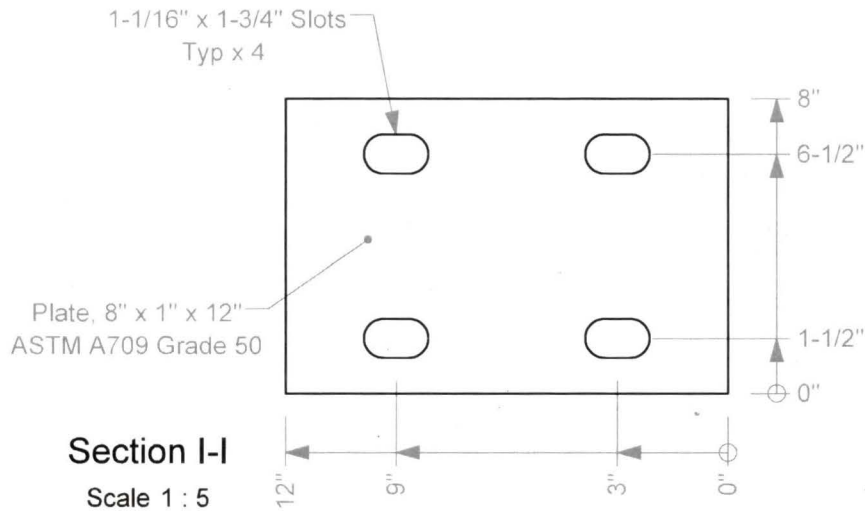


Elevation View
End Section



Section J-J
Scale 1 : 8

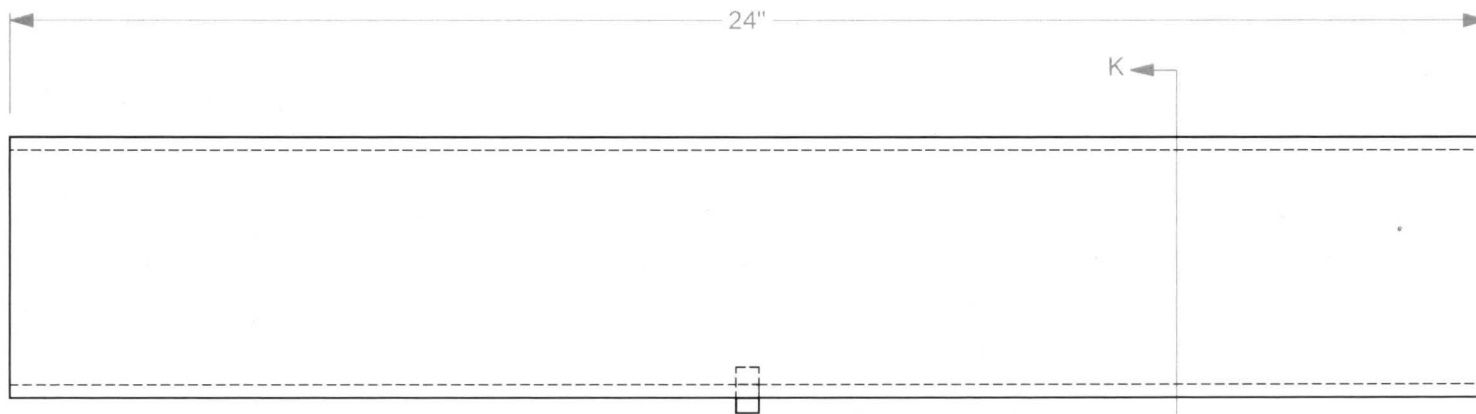
8a. Galvanize Rail and Splice Sections after all fabrication is complete.



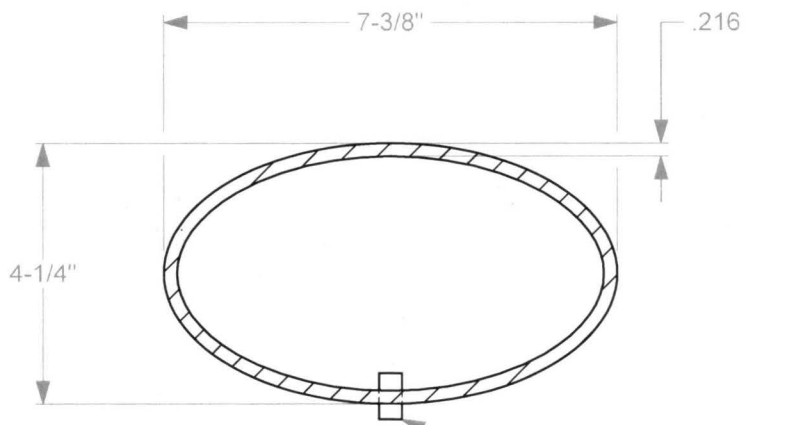
Section I-I
Scale 1 : 5



Roadside Safety and
Physical Security Division -
Proving Ground



Rail Splice
API-5LX52



Section K-K

Ø 3/8" driving fit Pin
protruding 1/4"



Roadside Safety and
Physical Security Division -
Proving Ground

Project #607841 WP Lane Bridge Rail

2017-09-13

Drawn by GES

Scale 1:3

Sheet 9 of 9 / Rail Splice