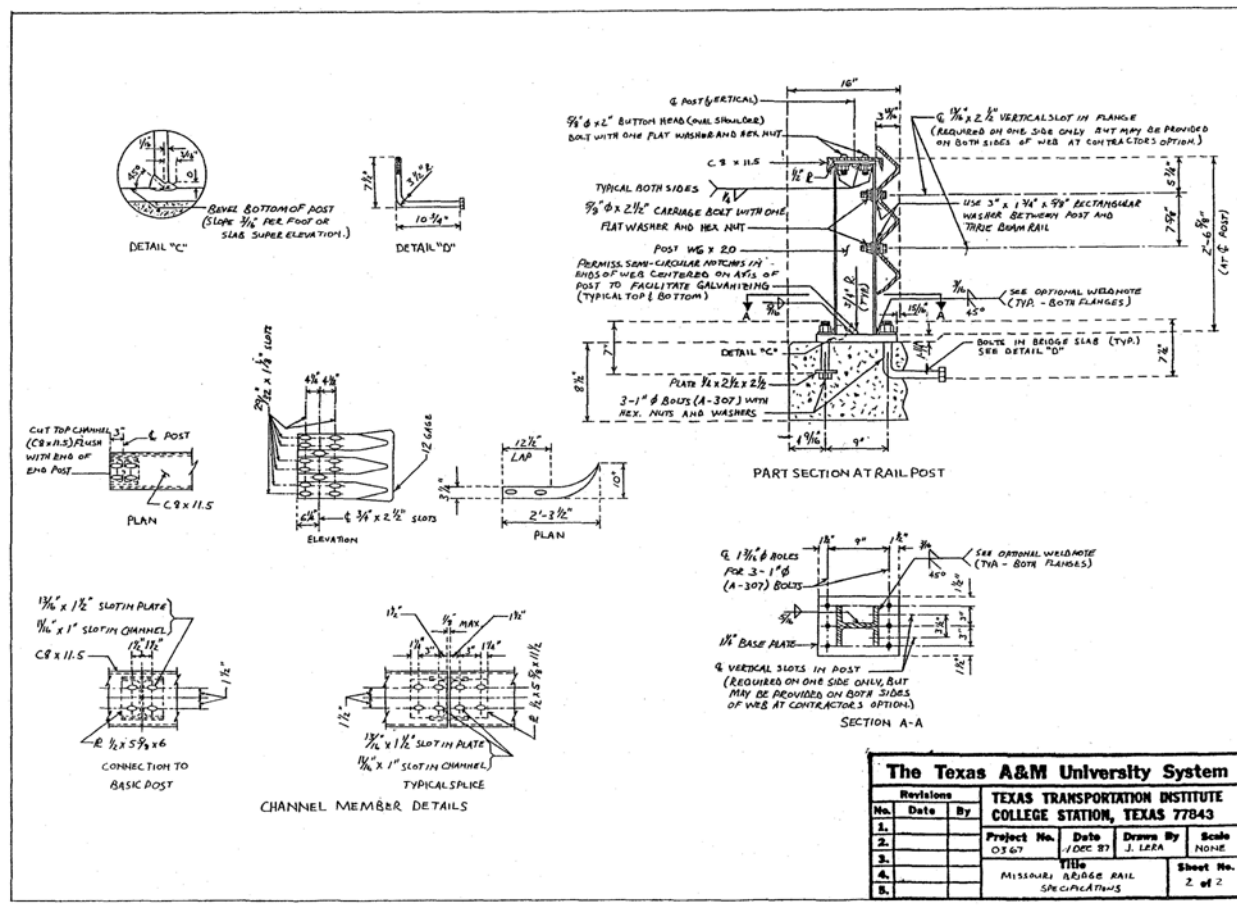


Thrie-Beam Bridge Rail

Missouri Thrie-Beam Channel (top mounted)



Revisions			The Texas A&M University System		
			TEXAS TRANSPORTATION INSTITUTE		
			COLLEGE STATION, TEXAS 77843		
No.	Date	By	Project No.	Date	Drawn By
1.			03 67	1/DEC 87	J. LERA
2.					
3.					
4.			Title		Sheet No.
5.			MISSOURI BRIDGE RAIL SPECIFICATIONS		2 of 2