

CIAS COVER FABRICATION SPECIFICATIONS

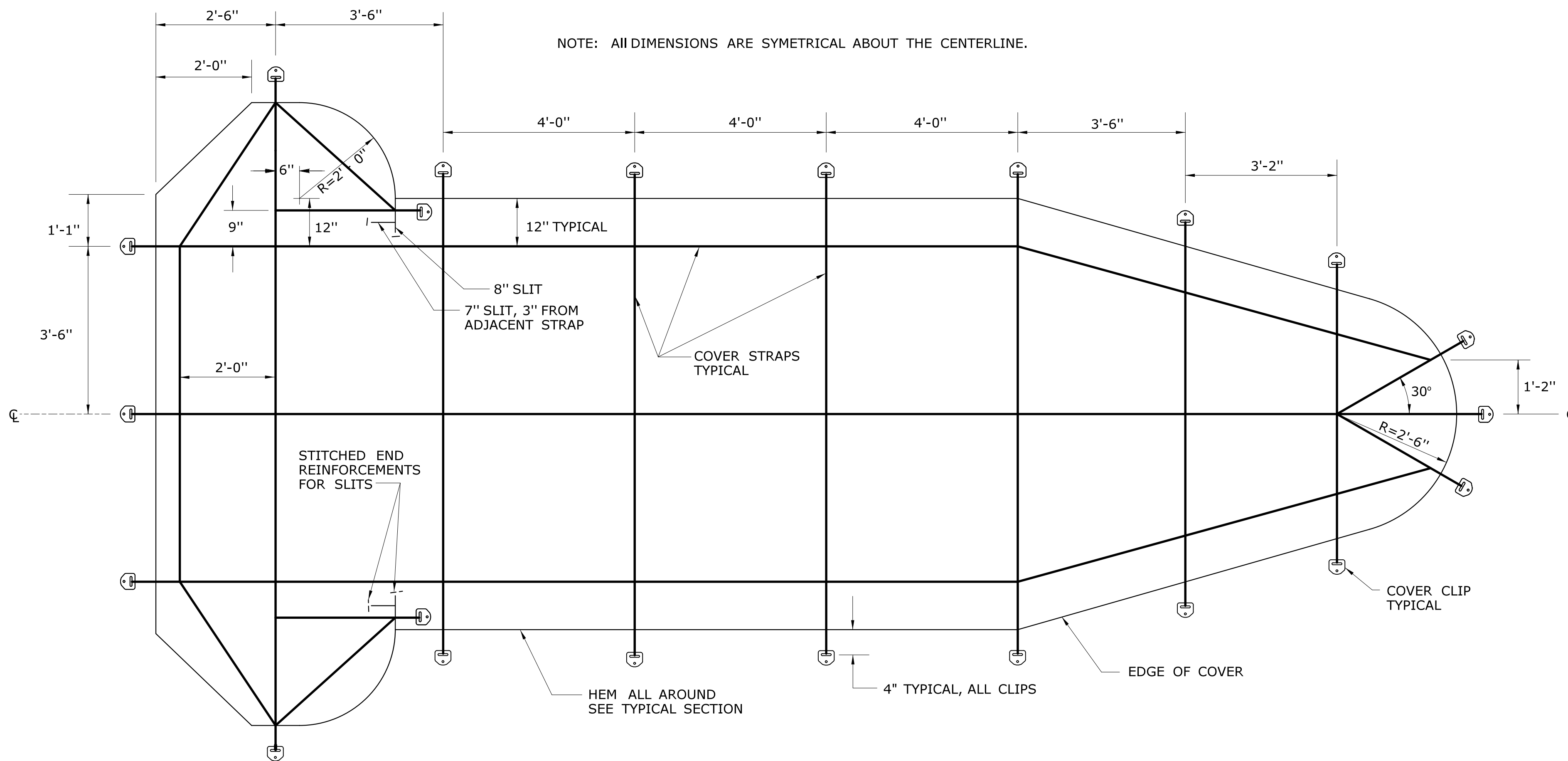
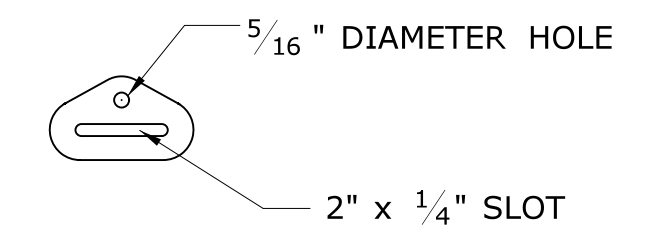
FABRIC - THE CIAS COVER SHALL BE FABRICATED FROM VINYL - COATED POLYESTER FABRIC CONFORMING TO THE FOLLOWING MINIMUM REQUIREMENTS : BASE FABRIC WEIGHT = 6.0 OZ/SY; TOTAL FABRIC WEIGHT=22.0 OZ/SY; TONGUE TEAR (METHOD 5134) = 150 LB; GRAB TENSILE (METHOD 5100) = 500/400 LB; STRIP TENSILE (METHOD 5102) = 400/300 LB/IN; HYDROSTATIC RESISTANCE (METHOD 5512) = 500 PSI; COLOR - BLACK. A SAMPLE OF THE PROPOSED FABRIC SHALL BE SUBMITTED FOR APPROVAL PRIOR TO ITS USE FOR THE CIAS COVER.

STRAPS - THE CIAS COVER STRAPS SHALL BE PLACED AND SEWN TO THE FABRIC IN THE CONFIGURATION SHOWN. THE STRAPS SHALL BE FABRICATED FROM 2" - WIDE BLACK SEAT-BELT MATERIAL, WITH A MINIMUM TOTAL TENSILE STRENGTH OF 5000 LB. STRAP LOCATION DIMENSIONS SHOWN ARE TO THE STRAP CENTERLINES.

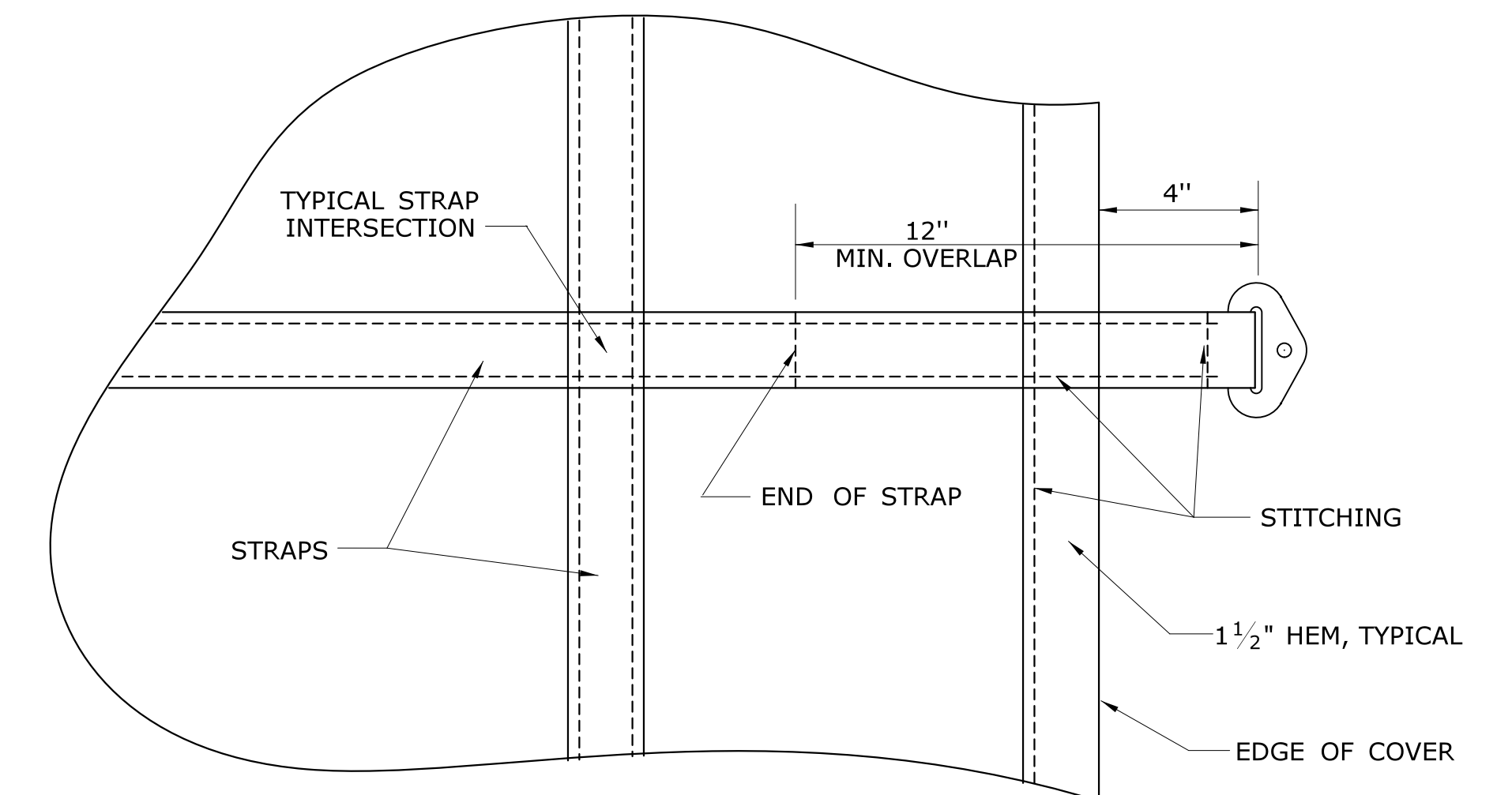
THREAD - THE STRAPS SHALL BE SECURELY FASTENED TO THE COVER FABRIC WITH BLACK OR NATURAL COLOR, SIZE EE NYLON THREAD.

STITCHING - STITCHING SHALL BE FULL LENGTH OF ALL STRAPS AND IN CONFORMANCE WITH THE CONFIGURATION SHOWN BELOW. VERTICAL STITCHING SHALL BE USED THROUGHOUT THE CIAS COVER WITH A SIZE OF 6 PER INCH. ALL LOOSE THREAD ENDS SHALL BE SECURELY TIED TO PREVENT RAVELING.

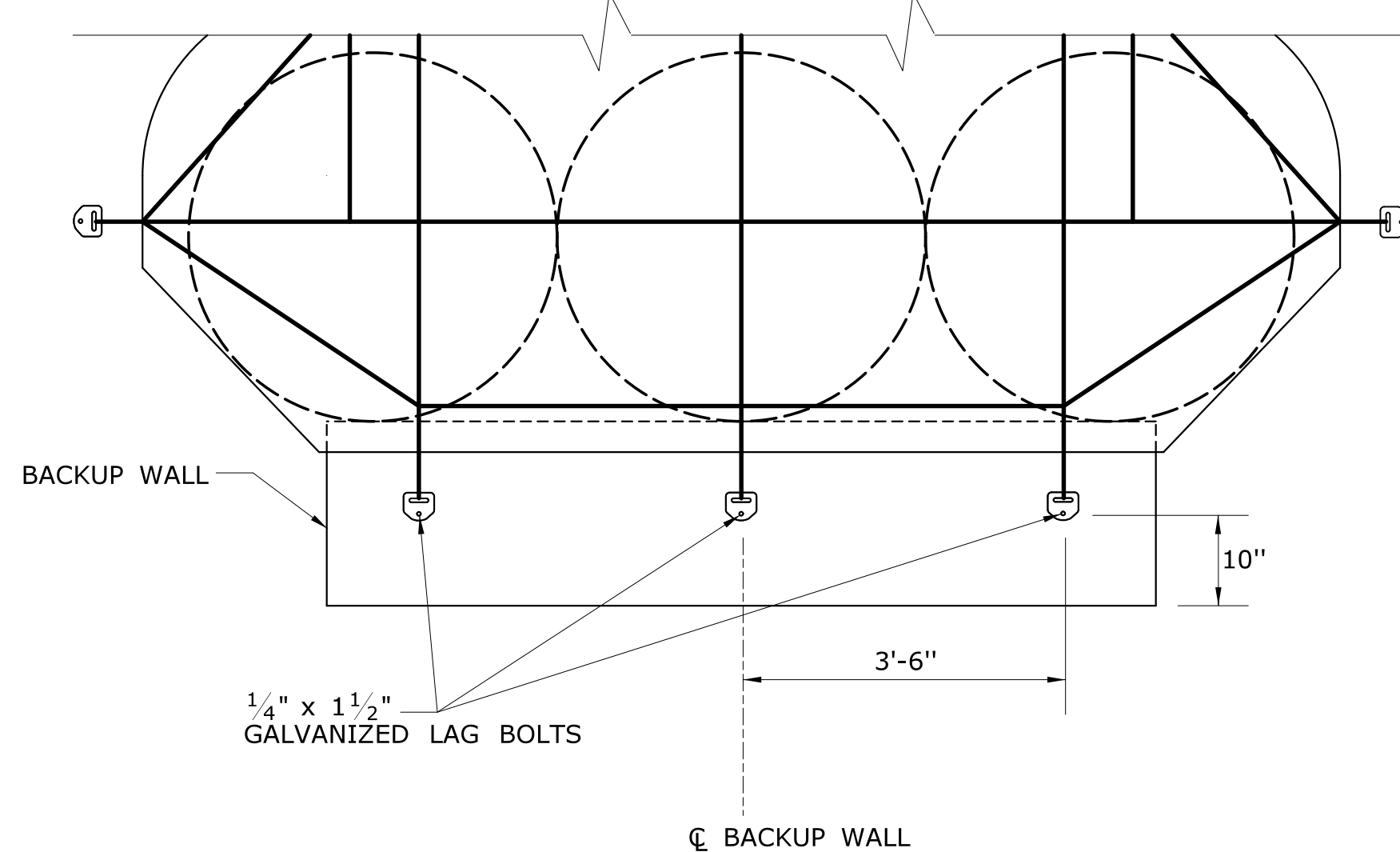
CLIPS - CHROME - PLATED STEEL CLIPS CONFORMING TO THE CONFIGURATION SHOWN BELOW SHALL BE FASTENED TO THE FREE END OF EACH STRAP. EACH CLIP SHALL HAVE A 2" SLOT AND 5/16" HOLE AS SHOWN.



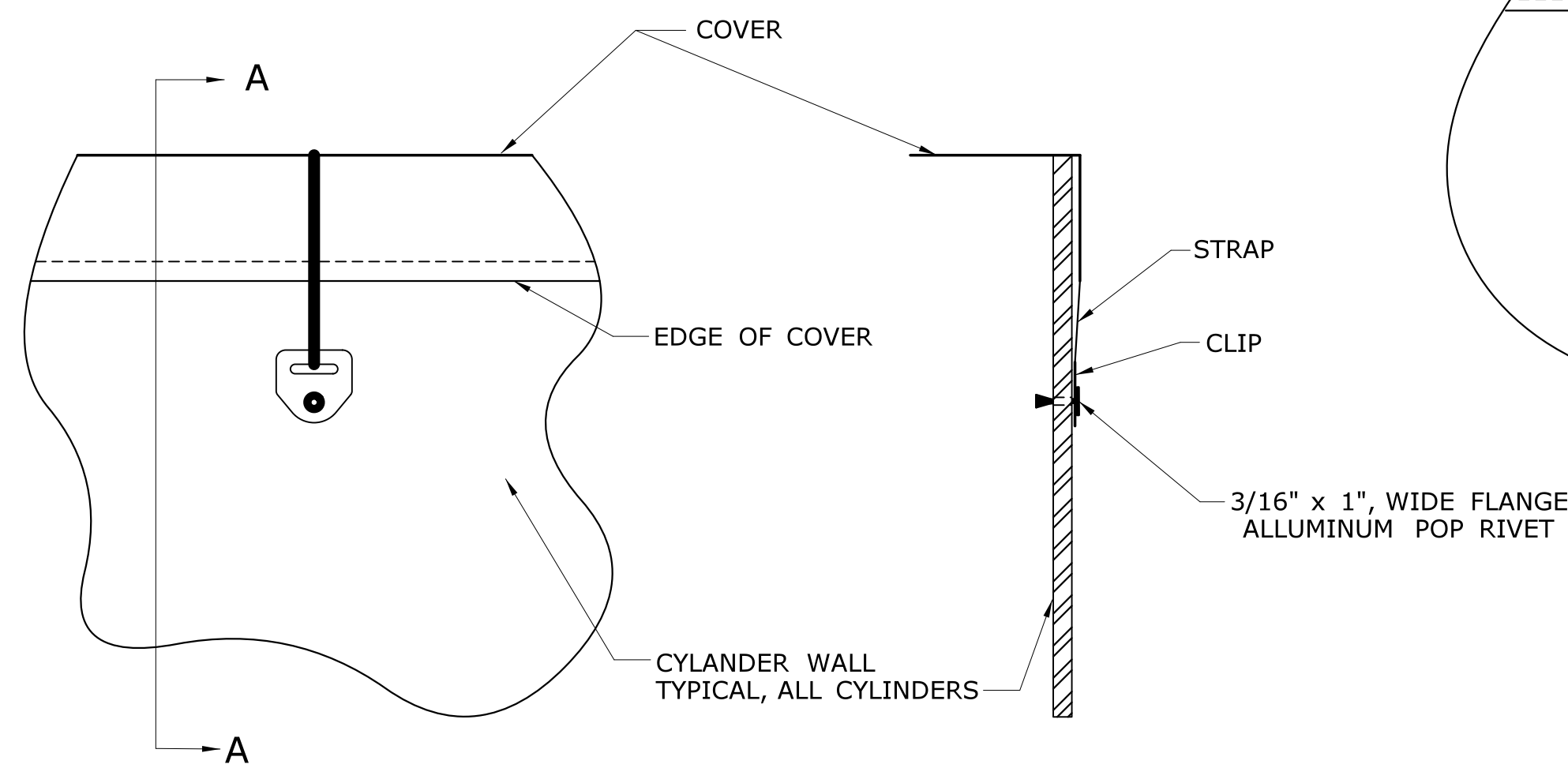
CIAS COVER PLAN



TYPICAL COVER SECTION



COVER ATTACHMENT TO BACKUP WALL



SECTION A - A

NOTE : RIVET HOLES SHALL BE PLACED SUCH THAT THE COVER IS TAUT THROUGHOUT THE CIAS.

COVER ATTACHMENT TO CYLINDERS

Revised 5/14/08

<p>THE INFORMATION, INCLUDING ESTIMATED QUANTITIES OF WORK, SHOWN ON THESE SHEETS IS BASED ON LIMITED INVESTIGATIONS BY THE STATE AND IS IN NO WAY WARRANTED TO INDICATE THE CONDITIONS OF ACTUAL QUANTITIES OF WORK WHICH WILL BE REQUIRED.</p>			<p>DESIGNER/DRAFTER: - CHECKED BY: - NTS</p>	<p>STATE OF CONNECTICUT DEPARTMENT OF TRANSPORTATION</p> <p>Filename: ...vclas4cov_2008.dgn</p>	<p>SIGNATURE/BLOCK: - APPROVED BY: - DATE: -</p> <p>OFFICE OF ENGINEERING</p>	<p>PROJECT TITLE: -</p>	<p>TOWN: -</p>	<p>PROJECT NO. - DRAWING NO. 1804-A4 SHEET NO. \$\$\$</p>
REV.	DATE	REVISION DESCRIPTION	SHEET NO.	Plotted Date: 7/17/2013				