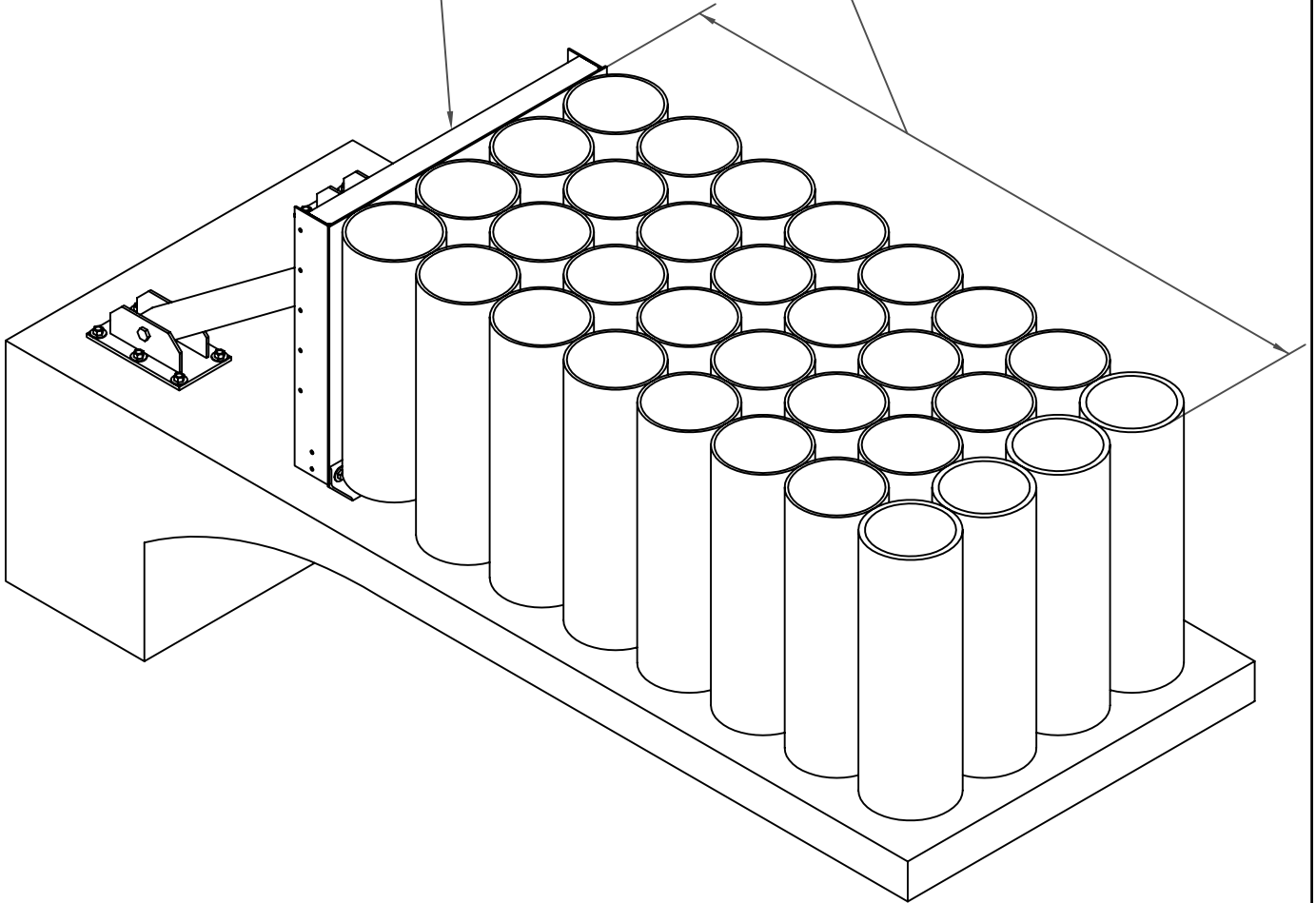
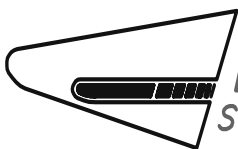


BACKUP CAN BE STEEL OR  
CONCRETE - STEEL SHOWN

LENGTH VARIES DEPENDING  
ON DESIGN SPEED FOR SITE  
(MAX. SPEED - 31 mph [50 km/hr]  
MAX. LENGTH - 102 [2591])



EASI-Cell™



ENERGY ABSORPTION  
SYSTEMS, INC.

SCI15

SHEET NO.

DATE:

1 of 2

4/19/05

## SPECIFICATIONS

The EASI-cell™ cluster system is specifically designed for areas where space is limited and traffic speeds do not exceed 31 mph [50 km/h]. These hazards include tollbooths, utility poles, railroad crossing signals, traffic lights, etc. The EASI-cell™ Cluster System also features extraordinary reusability.

The EASI-cell™ cluster system consists of HMW/HDPE cylinders fastened into a cluster. Like its predecessor, the Hydro® Cell Cluster, the variety of available cluster configurations is virtually limitless, but without the mess and hazard of water/antifreeze on the roadway after an impact or the inconvenience of having to refill the water cells.

The EASI-cell™ cluster system is crashworthy and has been tested to the NCHRP 350 testing procedures for TL-1 conditions up to 31 mph [50 km/h].

- |  |  |
|--|--|
| <ul style="list-style-type: none"><li>• Gating</li><li>• Non-redirecting</li><li>• Pocketing</li><li>• Bidirectional or unidirectional</li><li>• Very high reusability</li></ul> | <ul style="list-style-type: none"><li>• Length: Varies (max 8' 6" [2.59 m])</li><li>• Width: Varies with design (min. half of length)</li><li>• Height: 39" [991 mm]</li><li>• Design Speed: Varies up to 31 mph [50 km/h]</li></ul> |
|--|--|

### Contact Information

**Corporate Offices:**  
**35 East Wacker Dr., 11th Floor**  
**Chicago, IL 60601-2076**  
**Telephone: (312) 467-6750**  
**FAX: (312) 467-1356**  
<http://www.energyabsorption.com/>

## EASI-Cell™

*#SCI15*

SHEET NO.	DATE
2 of 2	4/19/05

