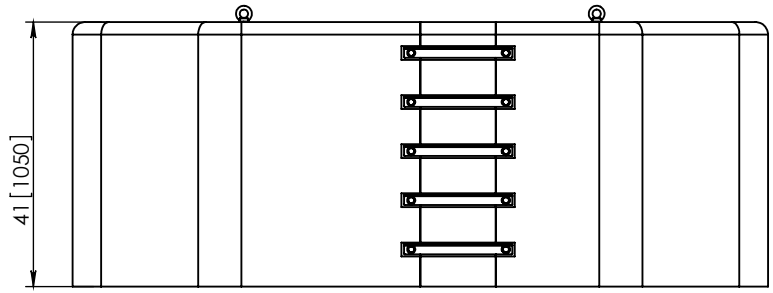
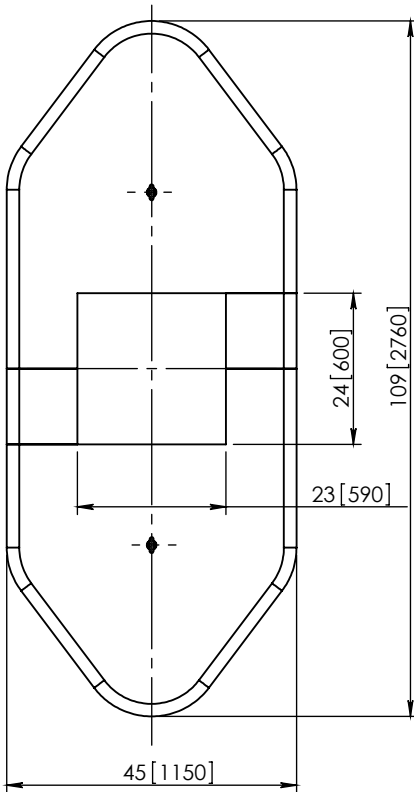


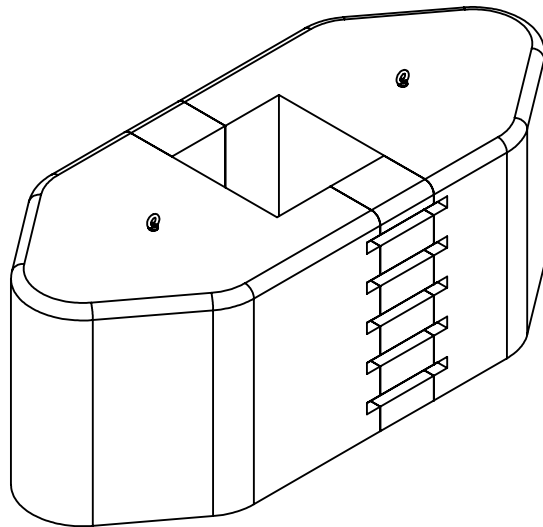
FRONT



SIDE



PLAN

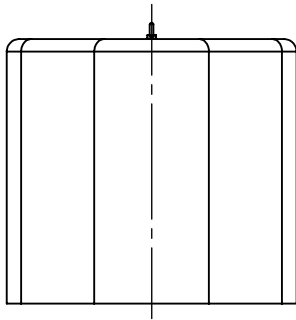


ISOMETRIC

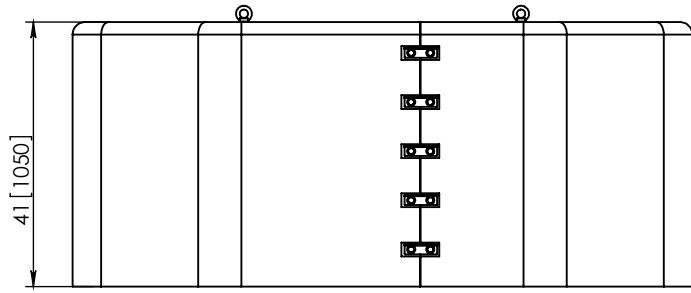
2010

RAPTOR 600

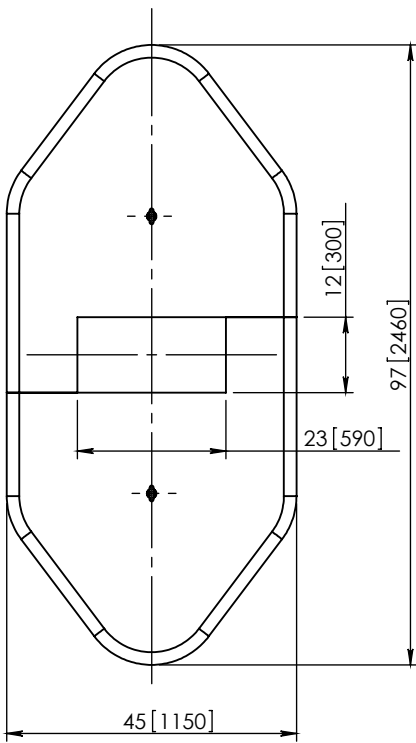
SHEET NO.	DATE:
1 of 3	14/04/10



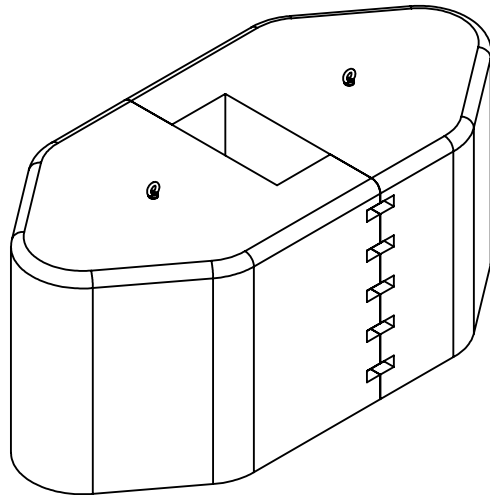
FRONT



SIDE



PLAN



ISOMETRIC

2010

RAPTOR 300

SHEET NO.		DATE:	
2 of 3		14/04/10	

## SPECIFICATIONS

RAPTOR Gating Non-Redirective Crush Cushion has been tested to the NCHRP Report 350 testing procedures for TL-1 conditions.  
Manufactured from High Density Polyethylene (HDPE).

## INTENDED USE

Permanent crush cushion for utility poles, trees, etc.

## CONTACT INFORMATION

Armorflex International Ltd.  
8 Paul Matthews road  
North Harbour  
Auckland  
New Zealand

Phone: 0064 9 415 2991  
Fax: 0064 9 415 2993  
E-mail: [info@armorflex.co.nz](mailto:info@armorflex.co.nz)

2010

RAPTOR System

	SHEET NO.	DATE:
	3 of 3	14/04/10