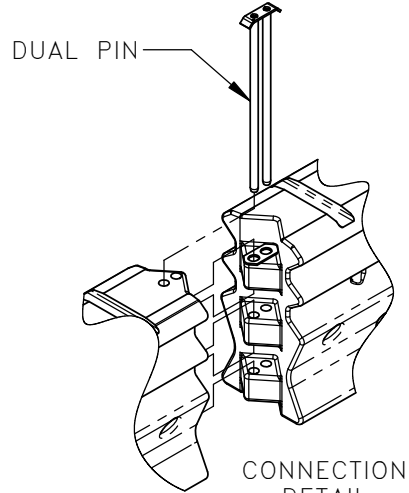


ARMORZONE® BARRIER

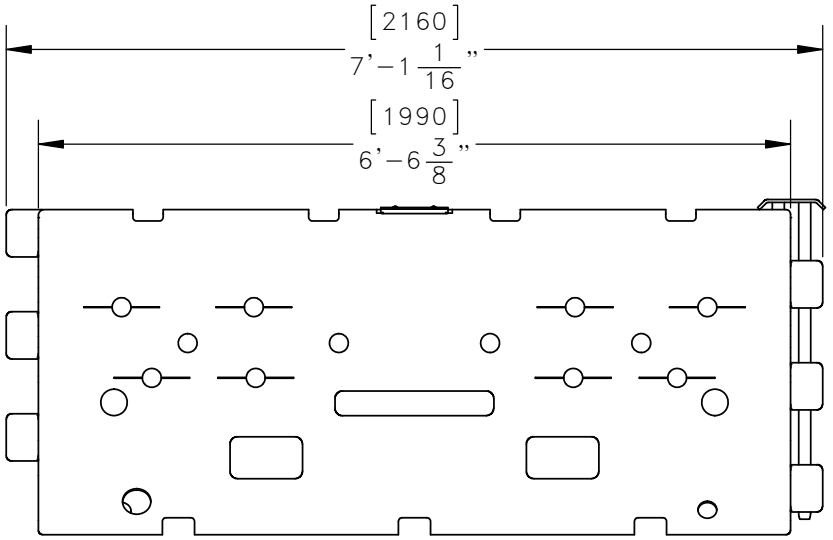
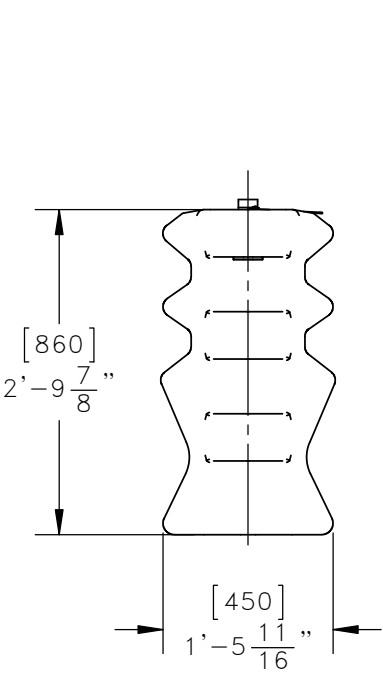
ARMORZONE®, END TERMINAL



DUAL PIN

CONNECTION DETAIL

SCALE 1 : 30



(FIRST ELEMENT DETAIL)

ARMORZONE®, END TERMINAL, TL-2



LINDSAY TRANSPORTATION SOLUTIONS
 180 River Road
 Rio Vista, CA 94571
 Tel: 888-800-3691
 www.barriersystemsinc.com

SCI29

SHEET NO.	DATE:
1 OF 2	06/13/13

INTENDED USE

The ArmorZone® End Terminal is a free standing plastic crash cushion designed to be attached to the ArmorZone® Barrier (SWM17). The ArmorZone® End Terminal is a non-redirective, gating crash cushion. This end terminal allows an impacting vehicle to be stopped, contained or re-directed in a safe and predictable manner. The end treatment is 7 foot [2160] long and can be quickly interlocked to the ArmorZone® Barrier using a dual pin connector. The ArmorZone® End Terminal is never to be filled with water.

APPROVALS

The ArmorZone® has been fully tested in conformance with NCHRP Report 350 as a Test Level 2 end treatment and is accepted by FHWA.

FHWA Acceptance Letters: HSST/B-23 and HSST/CC-119, August 22, 2011

CONTACT INFORMATION

Lindsay Transportation Solutions
180 River Rd.
Rio Vista, CA 94571
www.barriersystemsinc.com
Phone: 888-800-3691 or 707-374-6800
Fax: 707-374-6801
Email: info@barriersystemsinc.com

ARMORZONE®, END TERMINAL, TL-2

SCI29



LINDSAY TRANSPORTATION SOLUTIONS
180 River Road
Rio Vista, CA 94571
Tel: 888-800-3691
www.barriersystemsinc.com

SHEET NO.

DATE:

2 OF 2

06/13/13