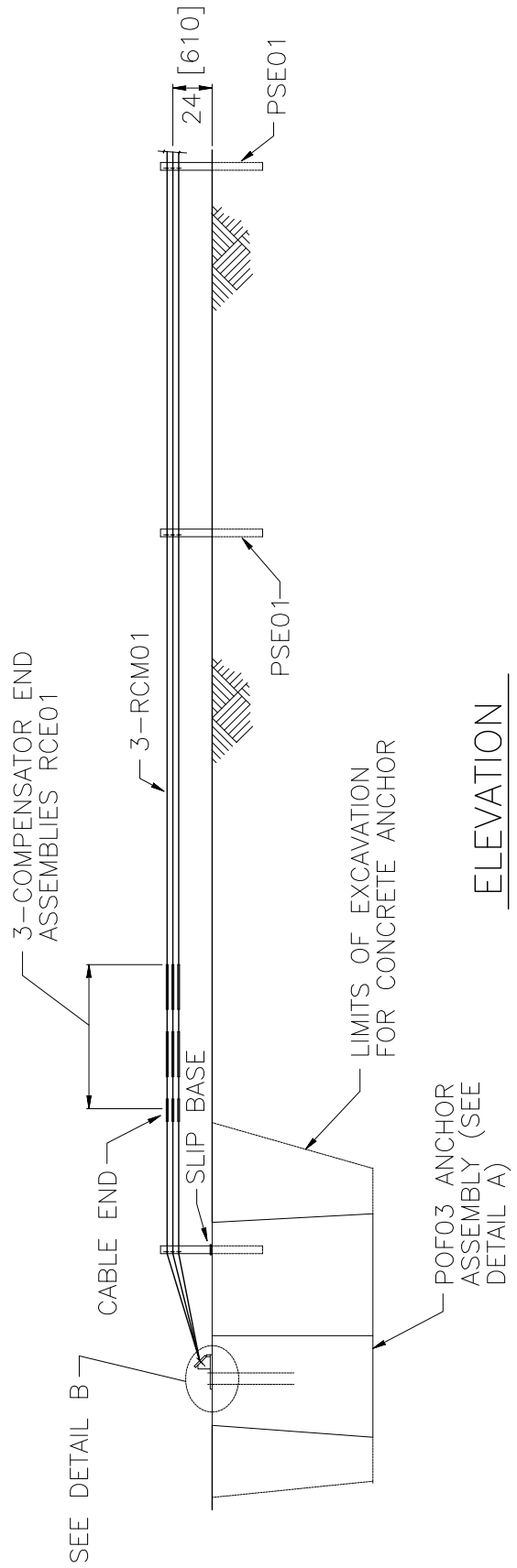


PLAN



ELEVATION

CABLE GUARDRAIL ANCHOR



SEC01

SHEET NO.	DATE:
1 of 4	8/11/2005

INTENDED USE

This cable guardrail anchor is for use with the SGR01 cable guardrail. The slip-base post is designed to release at the base in an end-on impact. The notches in the FPA02 bracket allow the cables to disengage in a frontal impact while providing adequate anchoring capability in downstream impacts. SEC01 is a Test Level 3 system.

COMPONENTS

The concrete anchor block may be cast-in-place as one piece or precast in two pieces, one to support the breakaway post and the other for the cable anchor. Concrete shall develop a 28-day strength of not less than 4000 psi [28 MPa]. The concrete shall use a cement conforming to AASHTO M85 Type I or II.

Unit length = 288 inches [7500 mm]

Designator	Component	Number
POF03	Anchor foundation assembly (includes 1 PSE06)	1
PSE01	Line posts	2
RCE01	Turnbuckle and spring compensator	3
RCE03	Cable end fitting, nut washers and cable	3
RCM01	Cable (end of main guardrail run)	3

APPROVALS

FHWA Acceptance Letter CC-63, 2/14/00.

REFERENCES

R.G. Phillips, A.B. Tyrell, J.E. Bryden and J.S. Fortuniewicz, *Cable Guiderail Breakaway Terminal Ends*, Engineering Research and Development Bureau, New York Department of Transportation, FHWA Report FHWA/NY/RR-90/148, Albany, NY, March 1990.

CONTACT INFORMATION

Federal Highway Administration
Office of Safety
400 Seventh Street, SW
Washington, DC 20590
202-366-2288

CABLE GUARDRAIL ANCHOR

SEC01

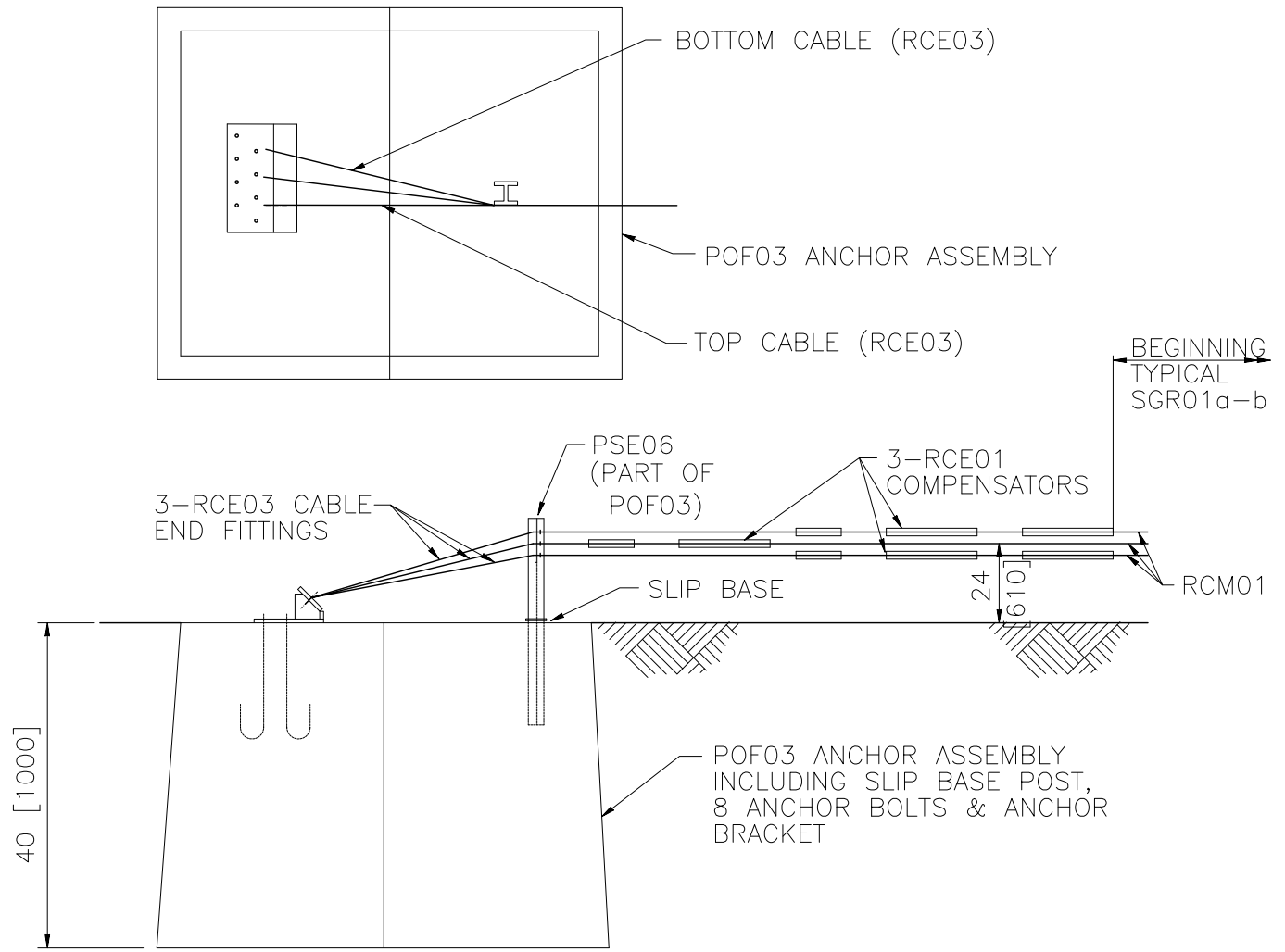
SHEET NO.

DATE

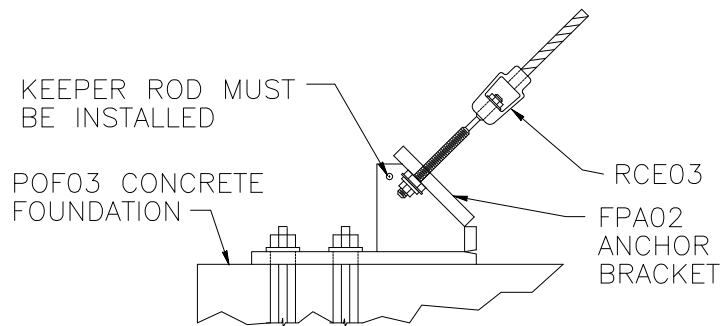
2 of 4

8/11/05





DETAIL A: FOUNDATION ASSEMBLY



DETAIL B: ANCHOR BRACKET

CABLE GUARDRAIL ANCHOR



SEC01

SHEET NO.

DATE:

3 of 4

8/11/2005

This sheet intentionally left blank.

CABLE GUARDRAIL ANCHOR

SEC01

SHEET NO.

DATE

4 of 4

8/11/05

