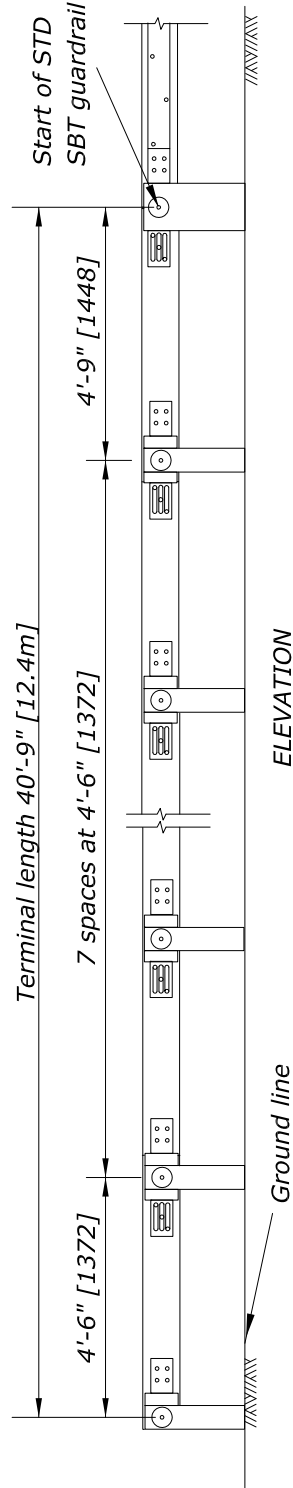


PLAN



ELEVATION

STEEL-BACKED TIMBER GUARDRAIL TANGENT END TERMINAL



SED01

SHEET NO.

DATE:

1 of 5

10/31/2013

INTENDED USE

SED01 is an *NCHRP Report 350 TL-2 Steel Backed Timber (SBT) Guardrail Tangent End Terminal*. The overall length is 40 ft. 9 in. [12.42 m], and it consists of nine (9) wood rail segments and nine (9) wood posts. The rail segments' cross-sectional area is 6 in. x 10 in. [150 mm x 250 mm], similar to the cross-section of the steel-backed timber SBT barrier rail segments. The length of the first rail segment is 5 ft. 3 in. [1.6 m]. The last rail segment (number 9) is 5 ft. 9 in. [1.75 m] in length. The remaining rails (numbers 2-8) are 5 ft. 6 in. [1.676 m] in length. These rail segment lengths are about half the rail segment lengths of the SBT barrier and were selected such that the spacing between the posts is 4 ft. [1.22 m].

Both ends of the rail segments are cut at a 1:2 (26 degree) angle, with the exception of first rail segment, which has one end at 90 degree, and the last rail segment, which has one end cut at a 1:1 (45 degree) angle. The first rail of the SBT guardrail is also cut at a 1:1 (45 degree) angle to fit the end of the terminal.

The steel splices and wood block-outs are connected to the posts using 5/8 in. [16 mm] diameter bolts. The bolts are 15 in. [380 mm] in length. The steel splices are 6 in. x 30 in. x 3/8 in. [150 mm x 750 mm x 10 mm]. The wood block-outs are 12 in. x 9 in. x 4 in. [300 mm x 225 mm x 100 mm]. Both are of similar size to the original SBT barrier.

APPROVALS

Federal Highway Administration (FHWA) Eligibility Letter CC-116, May 6, 2011.

CONTACT INFORMATION

Eastern Federal Lands Highway Division
21400 Ridgetop Circle
Sterling, VA 20166
(703) 404-6332
EFL.FHWA@fhwa.dot.gov

STEEL-BACKED TIMBER GUARDRAIL TANGENT END TERMINAL

SED01

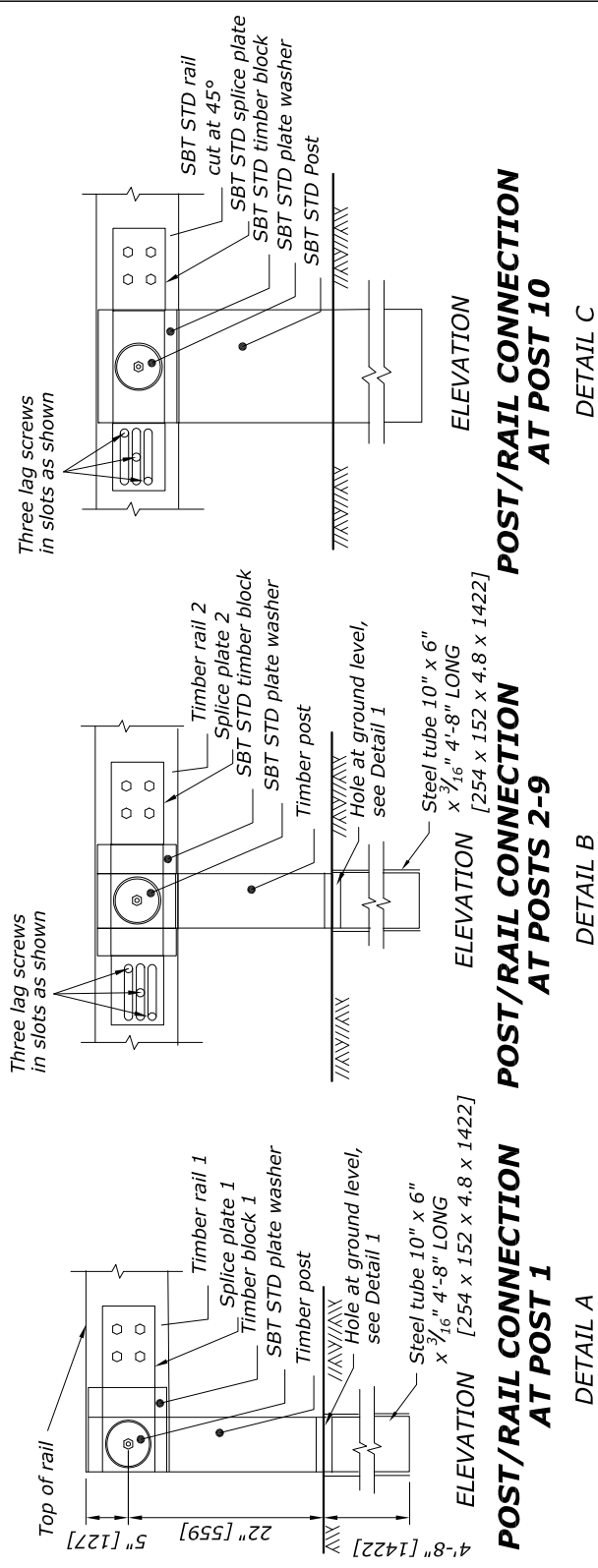
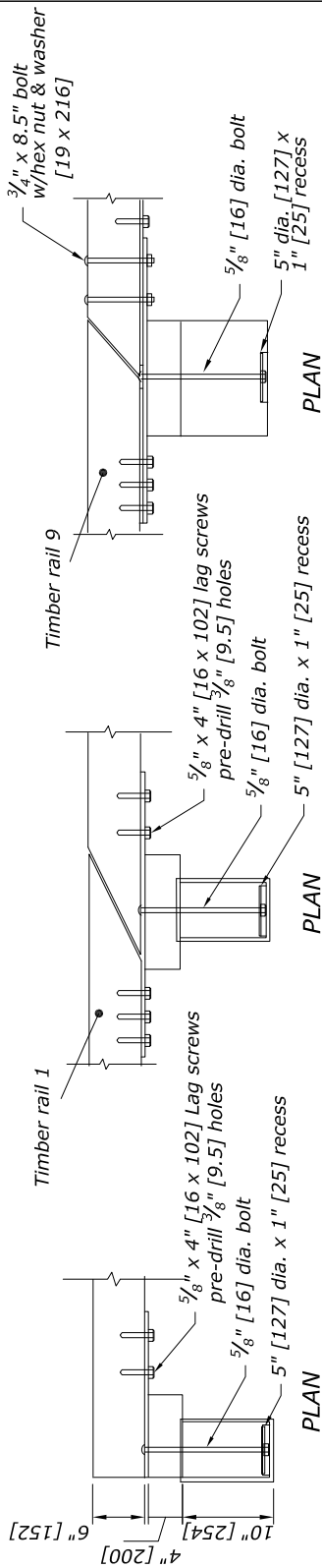
SHEET NO.

DATE

2 of 5

10/31/2013





STEEL-BACKED TIMBER GUARDRAIL TANGENT END TERMINAL



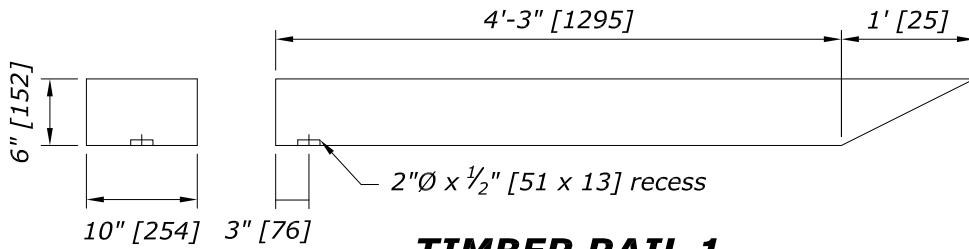
SED01

SHEET NO.

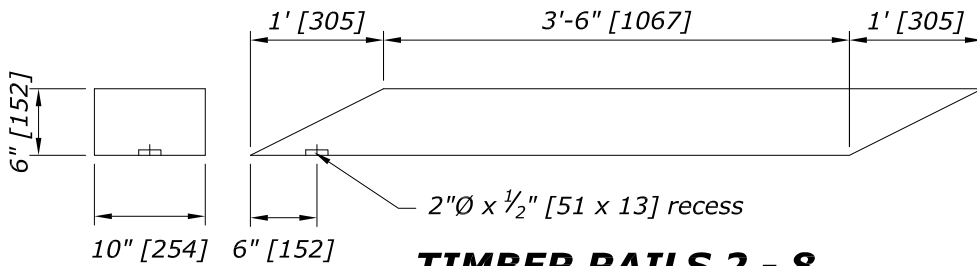
DATE:

3 of 5

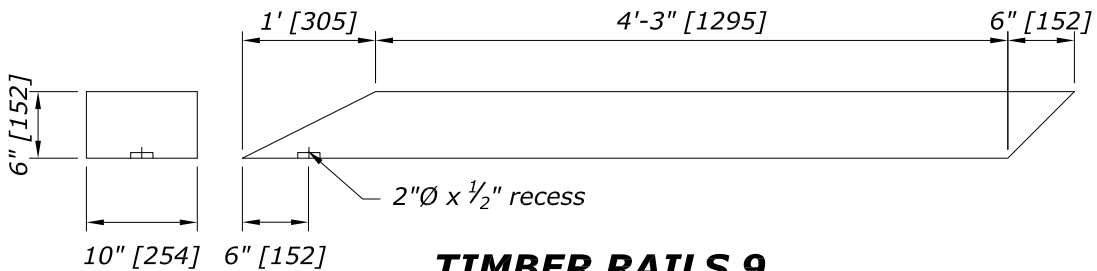
10/31/2013



TIMBER RAIL 1
DETAIL D



TIMBER RAILS 2 - 8
DETAIL E



TIMBER RAIL 9
DETAIL F

STEEL-BACKED TIMBER GUARDRAIL TANGENT END TERMINAL



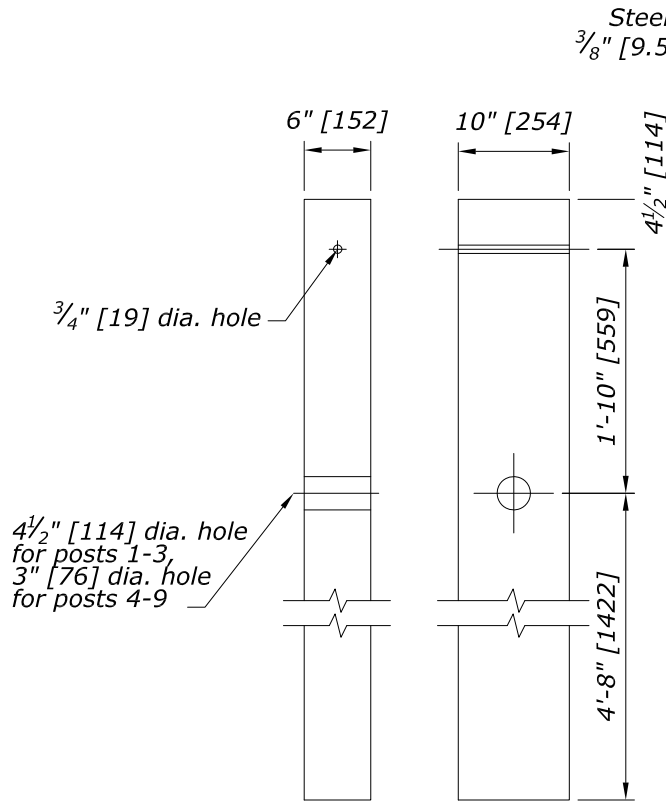
SED01

SHEET NO.

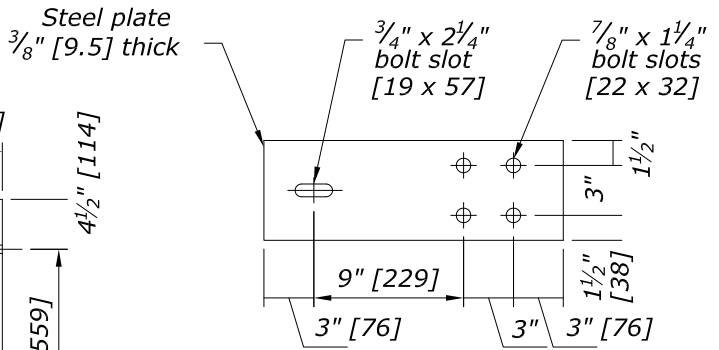
DATE:

4 of 5

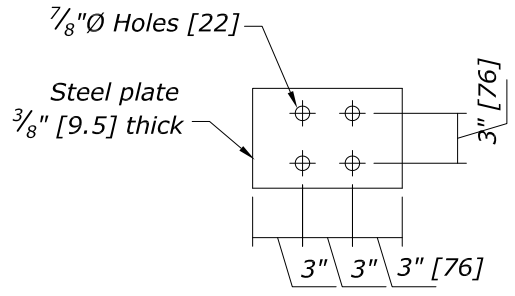
10/31/2013



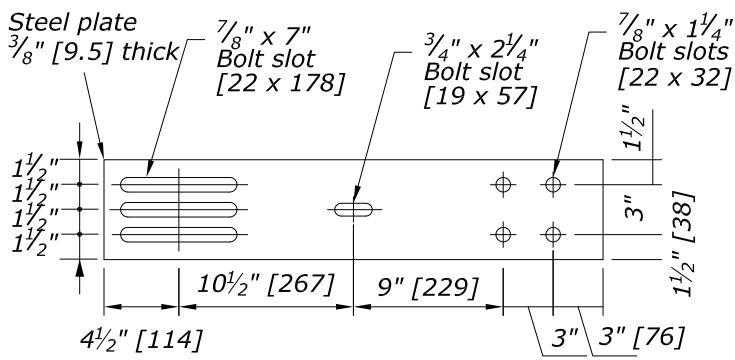
TIMBER POSTS 1 - 9
DETAIL I



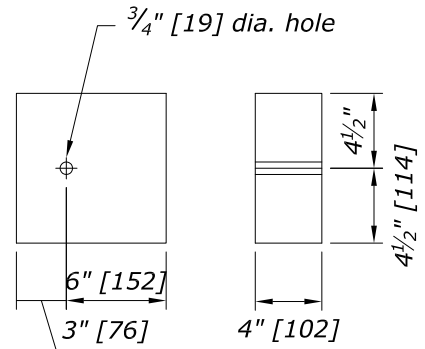
SPLICE PLATE AT POST 1
DETAIL K



FILLER PLATE AT POST 10
DETAIL J



SPLICE PLATE AT POSTS 2 - 9
DETAIL G



TIMBER BLOCK AT POST 1
DETAIL H

STEEL-BACKED TIMBER GUARDRAIL TANGENT END TERMINAL



SED01

SHEET NO.	DATE:
5 of 5	10/31/2013