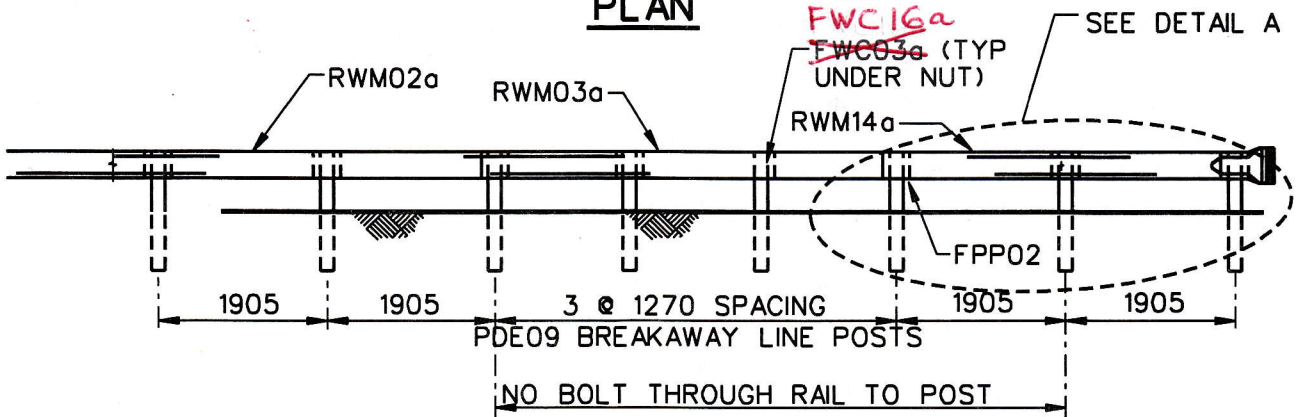
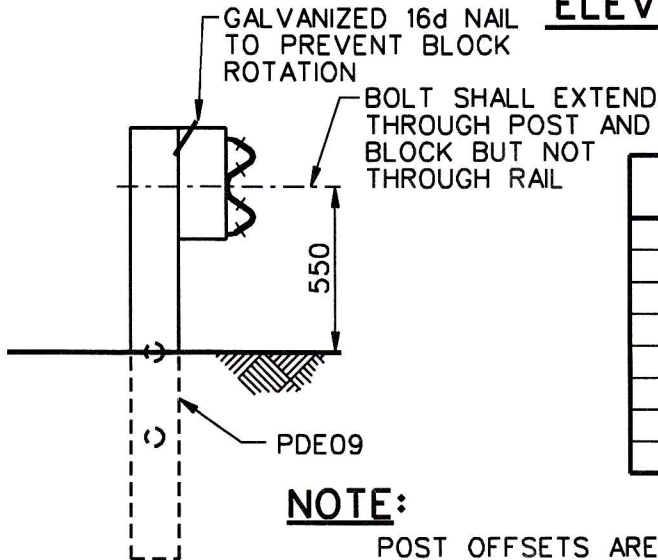


TANGENT LINE PROJECTED FROM THE FACE OF THE LAST TWO POST BLOCKS IN THE STANDARD POST SECTION.

PLAN



ELEVATION



POST	OFFSET FROM TANGENT	POST COMPONENT
1	1220	PDF01
2	635	PDF01
3	355	PDE09
4	200	PDE09
5	100	PDE09
6	65	PDE09
7	25	PDE02
8	0	PDE02

NOTE:

POST OFFSETS ARE GIVEN TO THE CENTER OF THE TRAFFIC FACE OF THE BLOCKOUTS & TO THE CENTER OF THE FIRST POST FACE. OFFSET POINTS ARE TO BE LOCATED BY CHORD MEASUREMENTS AT THE BACK OF RAIL EQUAL TO THE NOMINAL POST SPACINGS SHOWN. POSTS ARE TO BE SET APPROXIMATELY RADIAL TO THE RAILING AT EACH POST LOCATION.

SECTION A-A

1994

MODIFIED ECCENTRIC LOADER BREAKAWAY CABLE TERMINAL



SEW05

SHEET NO.	REF. NO.
1 of 6	

INTENDED USE

The modified eccentric loader breakaway cable terminal (MELT) is a crash-tested terminal for SGR04 strong-post w-beam guardrails. If the foundation tube and soil plate are driven into the soil, proper care should be taken to insure that the soil plate fasteners are not broken during the driving process.

COMPONENTS

Unit Length = 11,430

Designator	Component	Number
FBB01	Guardrail splice bolt and nut	30
FBB02	Guardrail bolt and nut	1
FBB03	Guardrail bolt and nut	1
FBB04	Guardrail bolt and nut	6
FBX16a	Bracket bolt (40 mm) and nut	8
FBX16a	Hex bolt (200 mm) and nut	4
FBX16a	Hex bolt (250 mm) and nut	2
FCA01	BCT cable anchor, nut and washers	1
FMM02	BCT post sleeve	1
FPA01	Cable anchor bracket	1
FPB01	Cable anchor bearing plate	1
FPP02	Shelf angle bracket	1
FWC16a	Circular washer	27
FWR03	Rectangular guardrail washer	3
PDB01	Timber post blackout	6
PDE02	Timber post	1
PDE09	CRT timber post	4
PDF01	BCT wood post	2
PFP01	Strut and yoke assembly	1
PLS03	Soil plate	2
PTE05	Foundation tube	2
REE01	MELT diaphragm plate	2
RWE02b	W-beam terminal connector	1
RWE04a	W-beam end section (buffer)	1
RWM02a	2-space w-beam rail	1
RWM03a	3-space w-beam rail	1
RWM14a	W-beam terminal rail	1

MODIFIED ECCENTRIC LOADER BREAKAWAY CABLE

SEW05

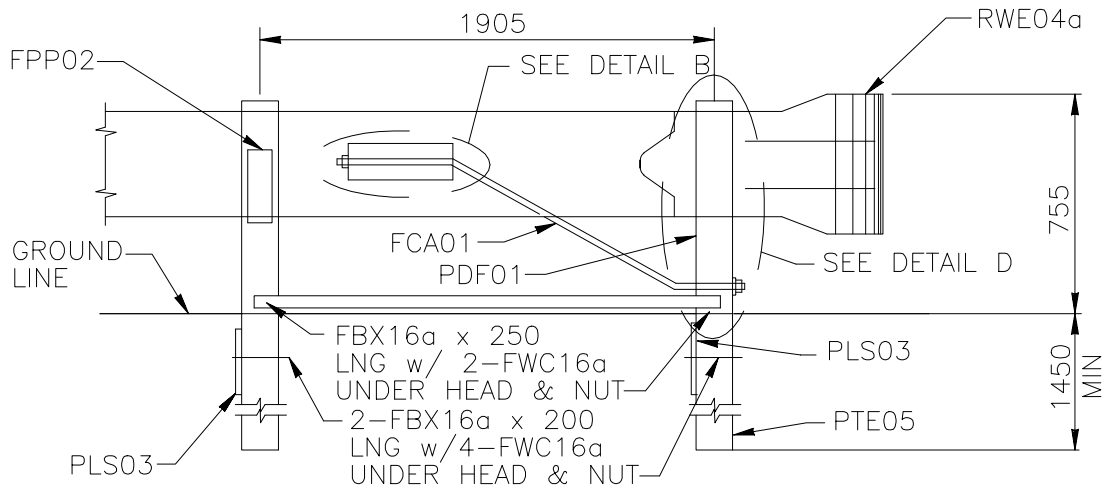
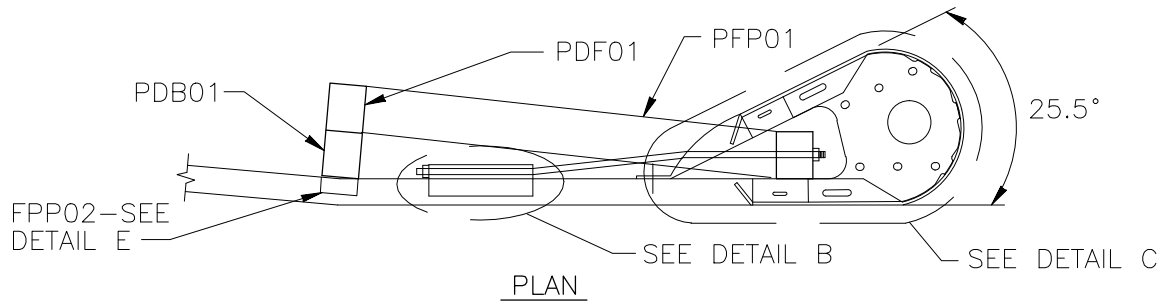
SHEET NO.

DATE

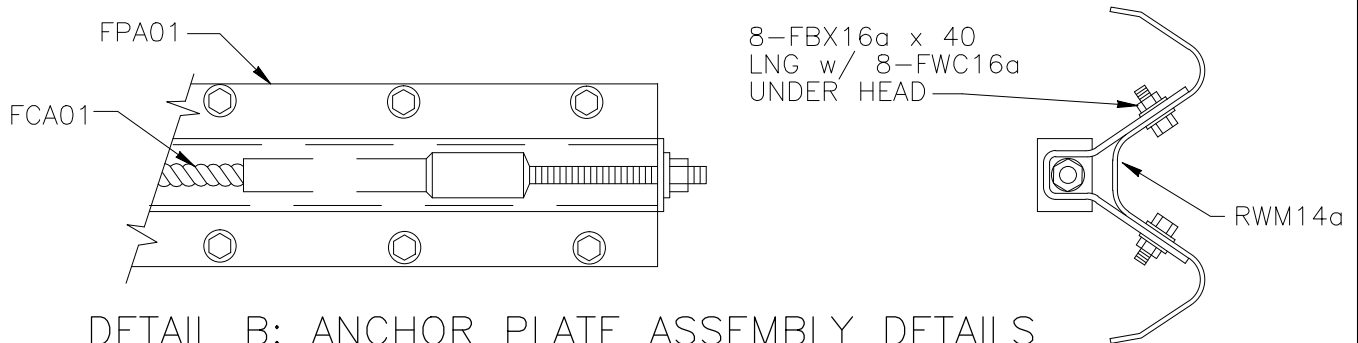
2 of 6

04-10-95

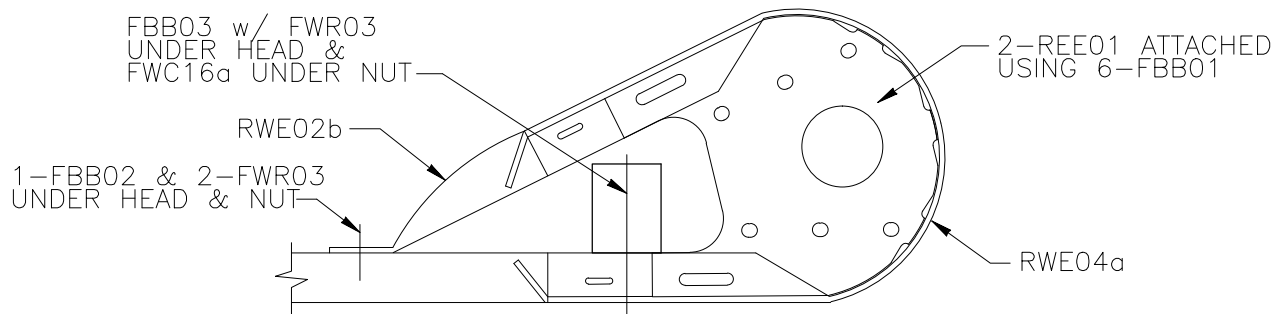




DETAIL A: BUFFERED END & ANCHORAGE ASSEMBLY



DETAIL B: ANCHOR PLATE ASSEMBLY DETAILS



DETAIL C: BUFFERED END ASSEMBLY

1994

MODIFIED ECCENTRIC LOADER BREAKAWAY CABLE TERMINAL

SEW05

SHEET NO.

REF. NO.

3 of 6

REFERENCES

FHWA, *Corrugated Steel Guardrail Terminals*, TECHNICAL ADVISORY T 5040.33, Office of Engineering (HNG-14), Federal Highway Administration, Washington, D.C., February 9, 1993.

FHWA HNG-14, *Guardrail Terminals: Breakaway Cable Terminal, Eccentric Loader Terminal, and Modified Eccentric Loader Terminal*, MEMORANDUM, Office of Engineering (HNG-14), Federal Highway Administration, Washington, D.C., March 27, 1991.

L. C. Meczowski, *Evaluation of Improvements to Breakaway Cable Terminals*, Federal Highway Administration, Report FHWA-RD-91-065, Washington, D.C., 1991.

MODIFIED ECCENTRIC LOADER BREAKAWAY CABLE

SEW05

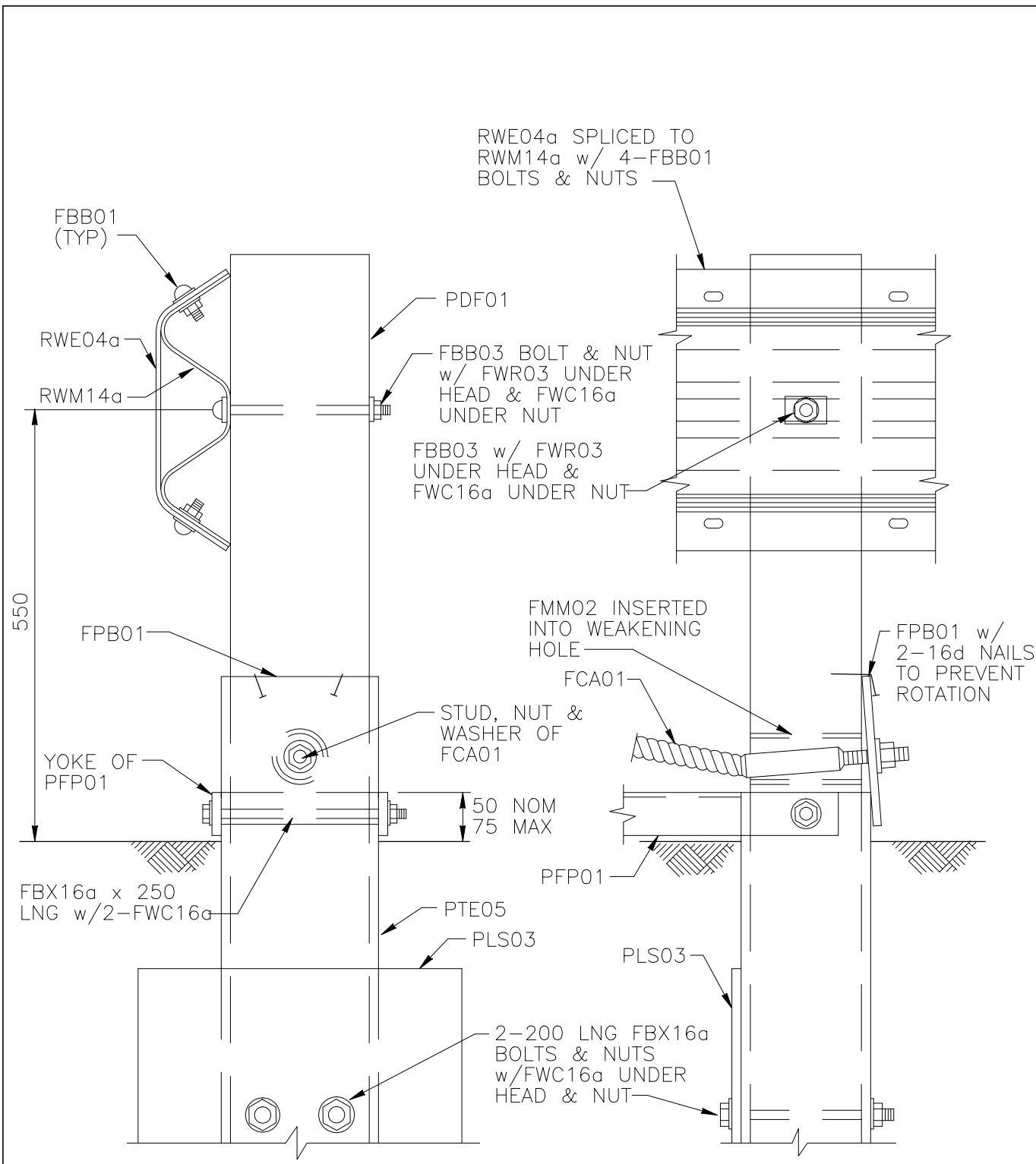
SHEET NO.

DATE

4 of 6

04-10-95





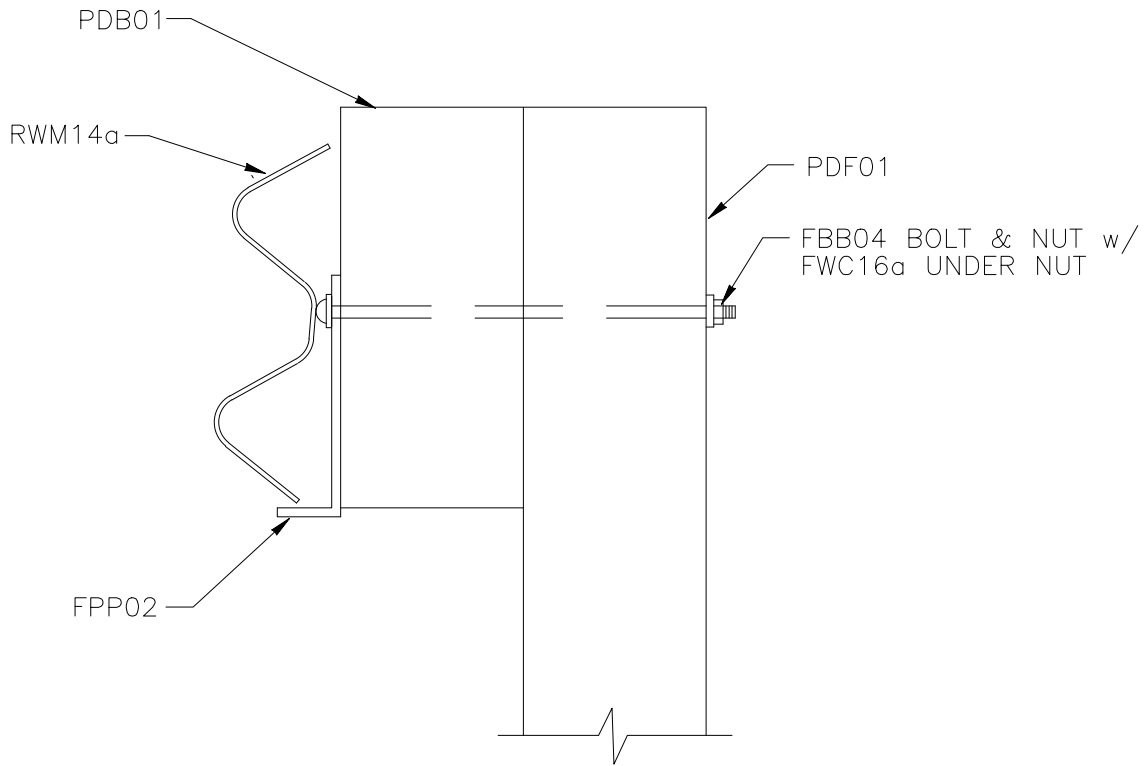
DETAIL D: LEAD POST ASSEMBLY

MODIFIED ECCENTRIC LOADER BREAKAWAY CABLE TERMINAL

SEW05

SHEET NO.	REF. NO.
5 of 6	

NOTE: RAIL RWM14a RESTS ON THE FPP02 SHELF CLIP.
BOLT FBB04 CONNECTS THE FPP02 SHELF CLIP.
PDB01 BLOCKOUT AND PDF01 POST. POST IS NOT
ATTACHED TO RAIL RWM14a AT POST 2.



DETAIL E: SHELF CLIP ATTACHMENT

MODIFIED ECCENTRIC LOADER BREAKAWAY CABLE TERMINAL

SEW05

SHEET NO.

REF. NO.

6 of 6