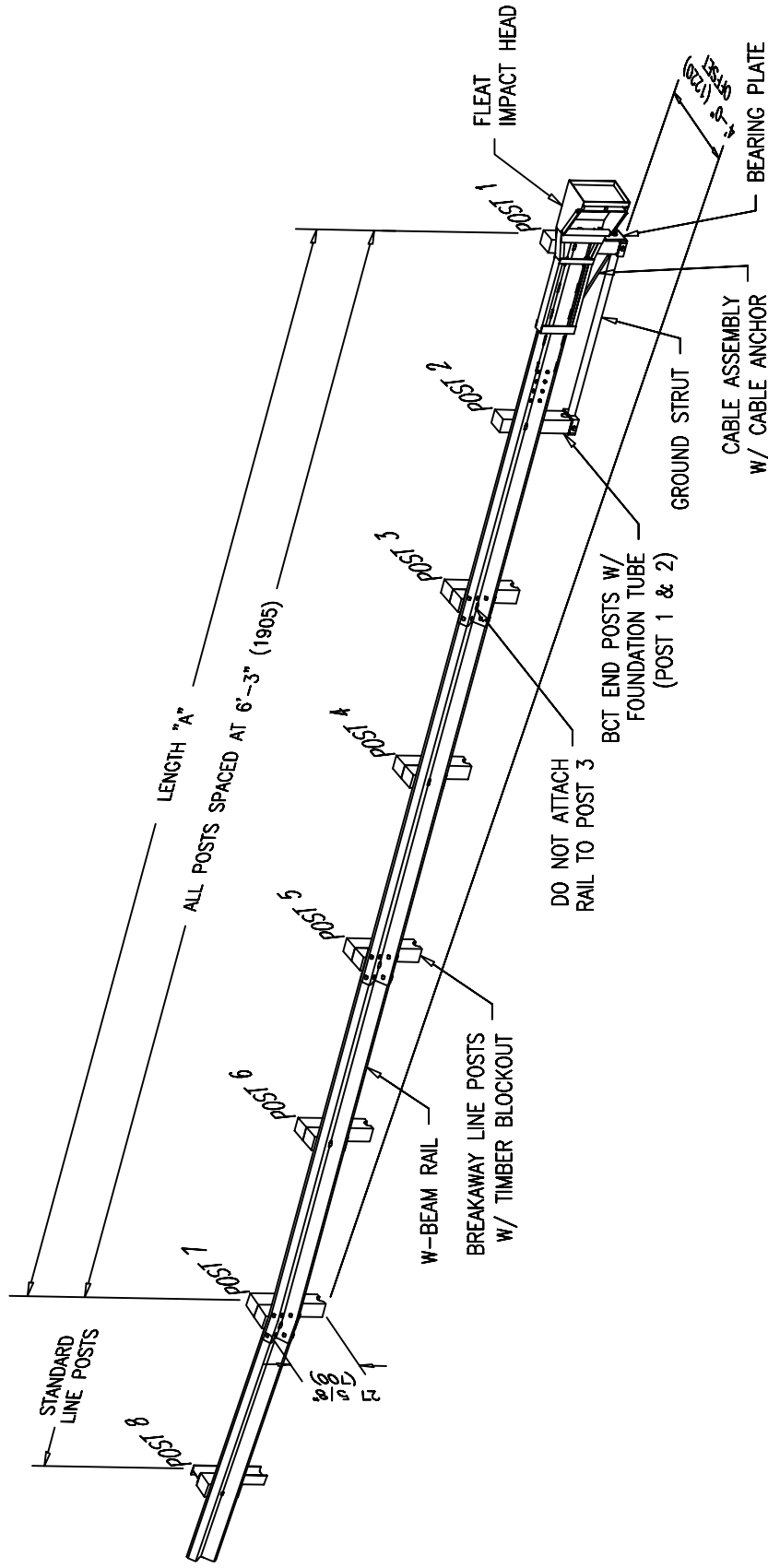


2005



NOTES:

1. CAN BE INSTALLED AT 2'-6" TO 4'-0" OFFSET.
2. WOOD OR STEEL BREAKAWAY POSTS MAY BE USED FOR THIS SYSTEM. WOOD POSTS SHOWN.
3. SEE TABLE FOR OVERALL LENGTH.

SYSTEM	SEW14a	SEW14b
NCHRP 350	TL 3	TL 2
LENGTH "A"	37'-6"	25'-0"
	(11.43m)	(7.62m)
POSTS	7	5

Flared Energy Absorbing Terminal (FLEAT)



Road
Systems
Inc.

SEW14a&b

SHEET NO.	DATE:
1 of 2	8-16-05

INTENDED USE

The FLEAT (FLared Energy Absorbing Terminal) family of products represents straight flared (not parabolic) roadside energy-absorbing terminals that are supported by breakaway posts and used to protect the ends of W-Beam barriers. The offset is variable and can be optimized to fit site conditions. During end-on impacts, the vehicle pushes the FLEAT impact head down the rail section while sequentially kinking the rail element. The kinked rail exits the impact head on the front side but because of the impact head design and the direction that the rail is being kinked; the rail is directed away from traffic.

The FLEAT is a cable-anchored system. When impacted on the traffic side within the length of need and within design limits, the FLEAT contains and redirects the errant vehicle back toward its original travel path. A cable anchor bracket is attached to the backside of the first rail section with special high strength shoulder bolts. The cable anchor bracket locks into place for traffic face redirection impacts but releases for end-on impacts.

There are options for the breakaway posts. The FLEAT is approved by the FHWA with either wood or steel breakaway posts.

APPROVALS

- FHWA letter (CC-46) April 2, 1998 - FLEAT NCHRP 350 Test Level 3
- FHWA letter (CC-46A) August 27, 1998 - FLEAT variable offset 2'-6" to 4'-0"
- FHWA letter (CC-46B) May 21, 1999 - FLEAT NCHRP 350 Test Level 2
- FHWA letter (CC-61) August 27, 1999 - FLEAT steel post option
- FHWA letter (CC-46C) June 1, 2001 - FLEAT with all 6'-3" post spacing
- FHWA letter (CC-61B) April 5, 2004 - FLEAT steel post option
- FHWA letter (CC-61C) August 20, 2004 - FLEAT steel post option

CONTACT INFORMATION

Road Systems, Inc.
3616 Howard County Airport
Big Spring, Texas 79720
Phone 432-263-2435
Fax 432-267-4039
www.roadsystems.com

FLared Energy Absorbing Terminal (FLEAT)

SEW14a&b

SHEET NO.

DATE:

2 of 2

8-16-05



Road
Systems
Inc.