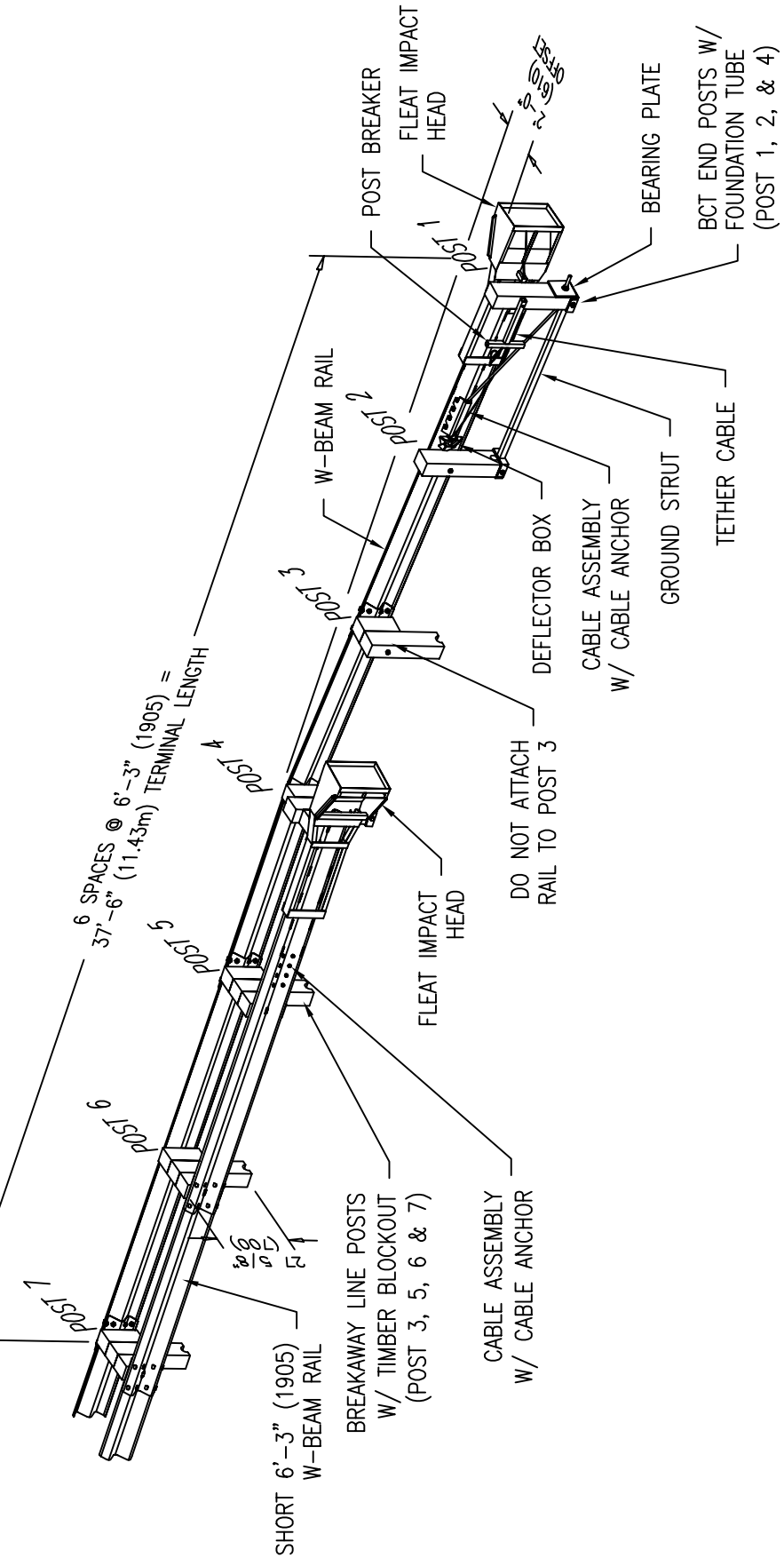


2005

STANDARD MEDIAN BARRIER



NOTES:

- 1. WOOD OR STEEL BREAKAWAY POSTS MAY BE USED FOR THIS SYSTEM. WOOD POSTS SHOWN.

FLEAT-MT Median Terminal



Road Systems Inc.

SEW16

SHEET NO.	DATE:
1 of 2	8-16-05

INTENDED USE

The **FLEAT-MT** is a median energy-absorbing terminal that is supported by breakaway posts and used to protect the ends of W-Beam median barriers in unidirectional and bidirectional applications. During end-on impacts, the vehicle pushes the FLEAT impact head down the rail section while sequentially kinking the rail element. The kinked rail exits the impact head on the front side but because of the impact head design and the direction that the rail is being kinked; the rail is directed away from traffic.

The FLEAT-MT is a cable-anchored system. When impacted on the traffic side within the length of need and within design limits, the FLEAT-MT contains and redirects the errant vehicle back toward its original travel path. A cable anchor bracket is attached to the backside of the two end rail sections with special high strength shoulder bolts. The cable anchor bracket locks into place for traffic face redirection impacts but releases for end-on impacts.

There are options for the breakaway posts. The FLEAT-MT is approved by the FHWA with either wood or steel breakaway posts.

APPROVALS

FHWA letter (CC-46D) August 24, 2001 - FLEAT-MT NCHRP 350 Test Level 3

CONTACT INFORMATION

Road Systems, Inc.
3616 Howard County Airport
Big Spring, Texas 79720
Phone 432-263-2435
Fax 432-267-4039
www.roadsystems.com

FLEAT-MT Median Terminal

SEW16

SHEET NO.

DATE:

2 of 2

8-16-05



Road
Systems
Inc.