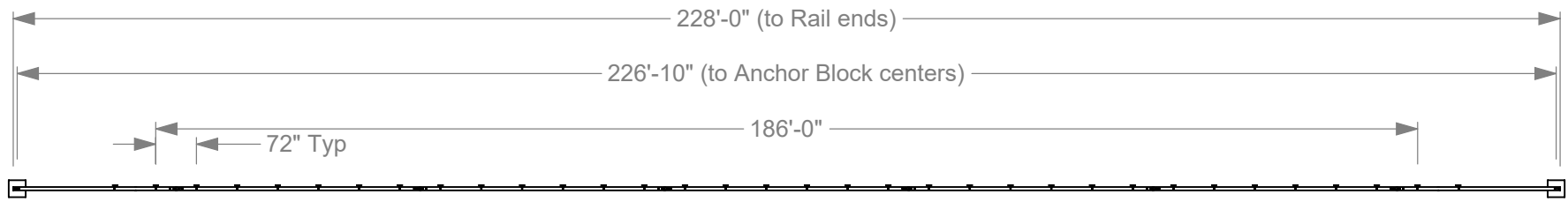
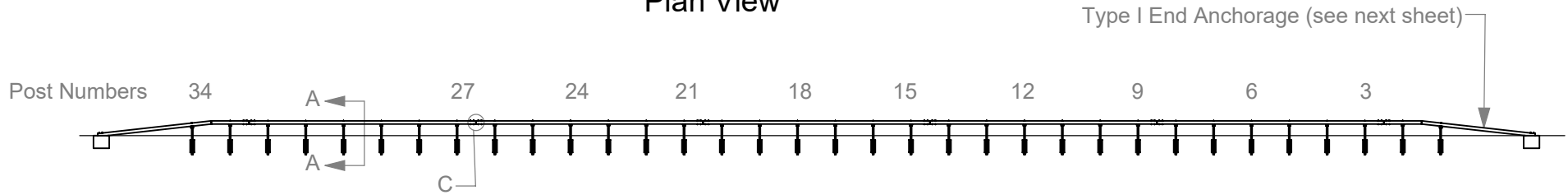


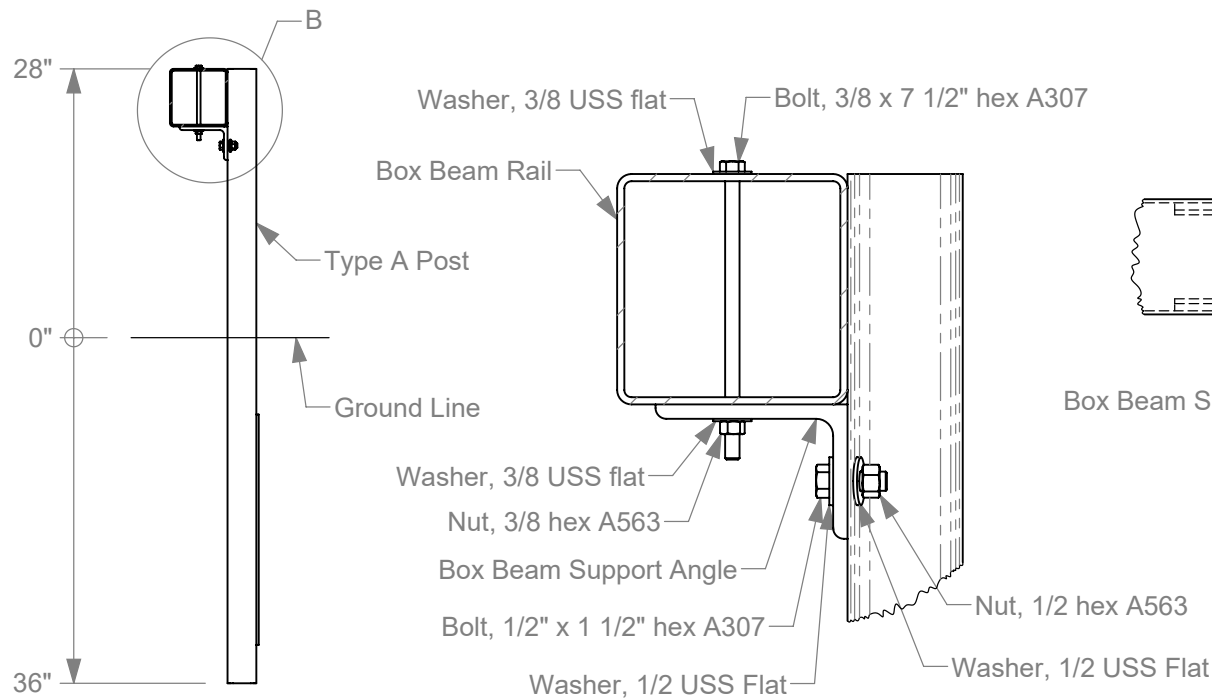
Test Installation



Plan View

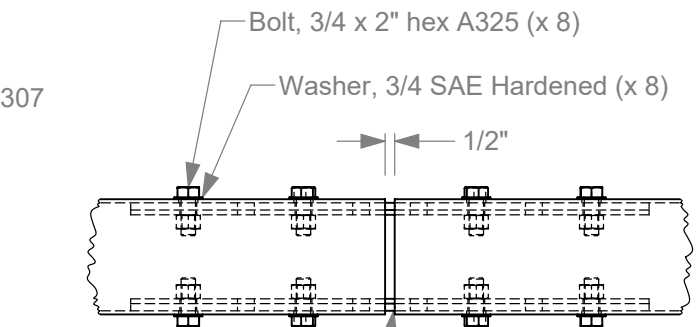


Elevation View



Section A-A
 Scale 1 : 20
 Typical Posts 2 - 33

Detail B
 Scale 1 : 5



Detail C
 Scale 1 : 10
 Typ 6 places

- 1a. All steel components, including hardware, shall be galvanized.
- 1b. Threads not shown on bolts for clarity.

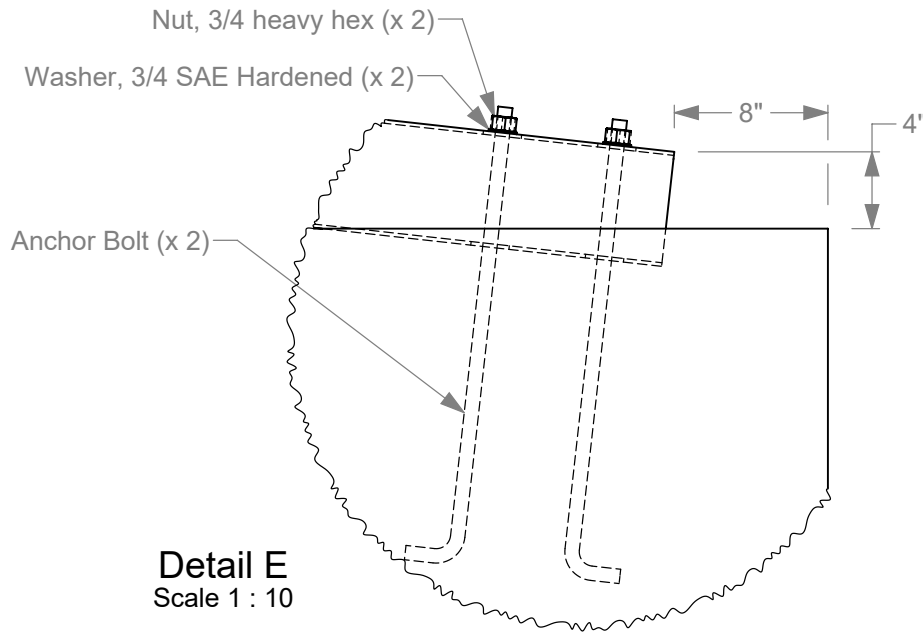
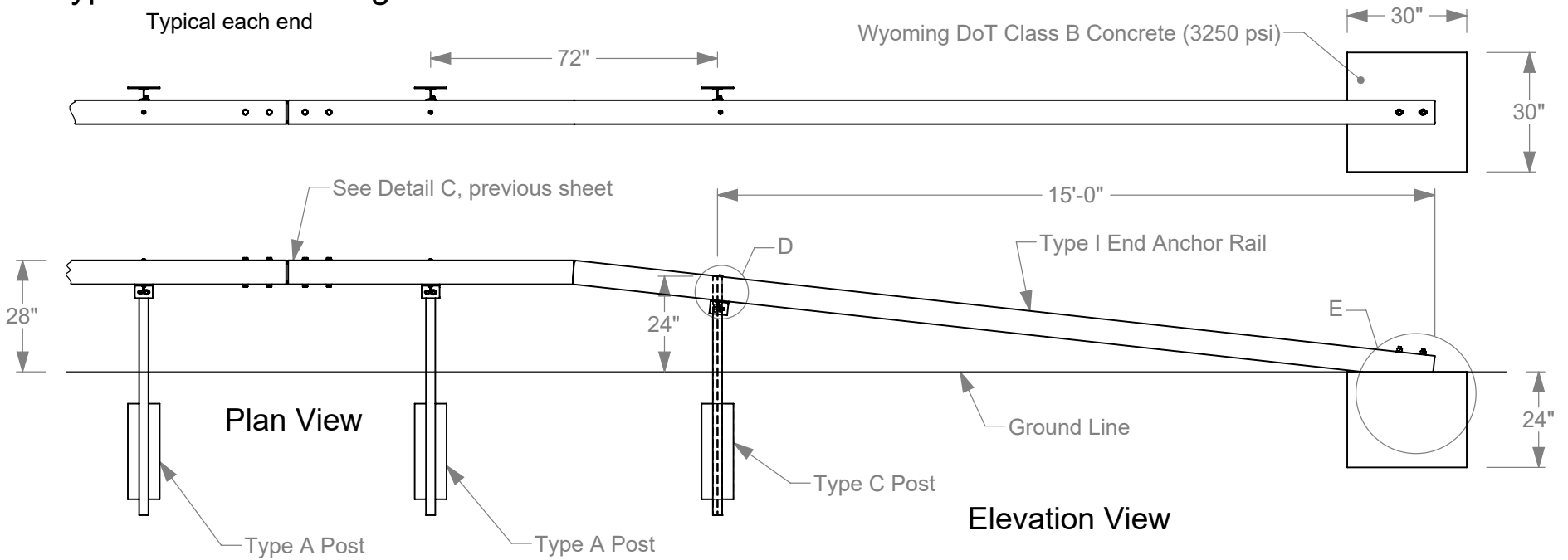


Roadside Safety and Physical Security Division - Proving Ground

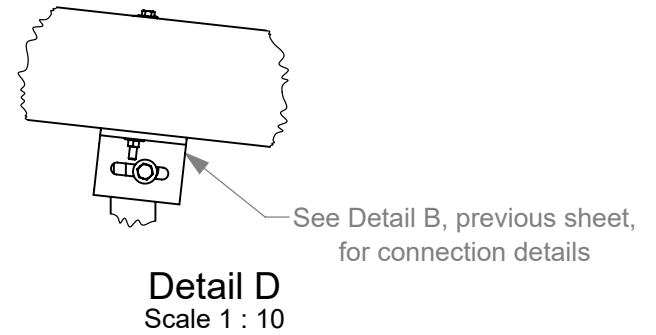
Project #610031 Wyoming Box Beam Rail		2019-02-28
Drawn by GES	Scale 1:300	Sheet 1 of 5 Test Installation

Type 1 End Anchorage

Typical each end




Detail E
Scale 1 : 10

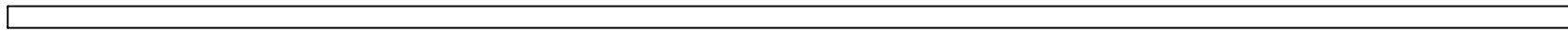
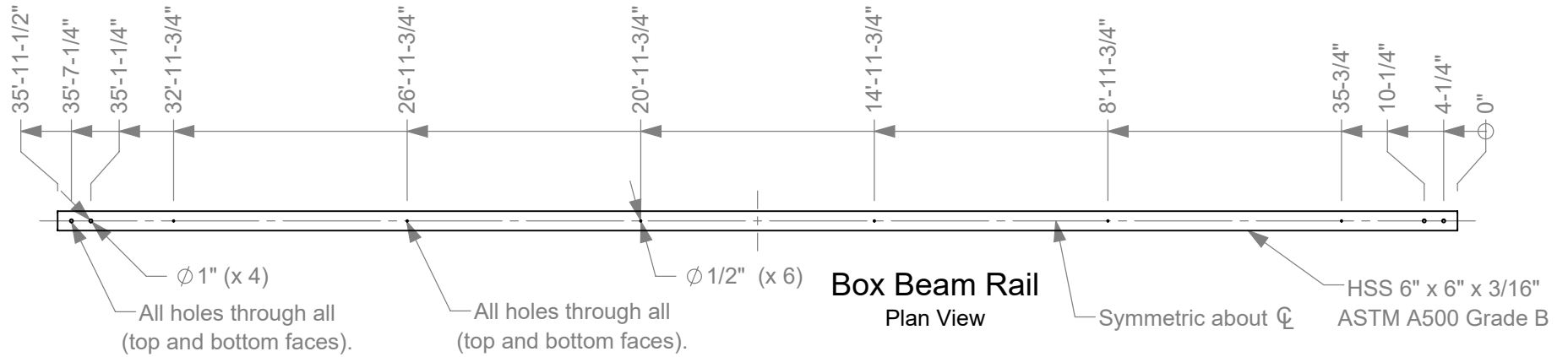


Detail D
Scale 1 : 10

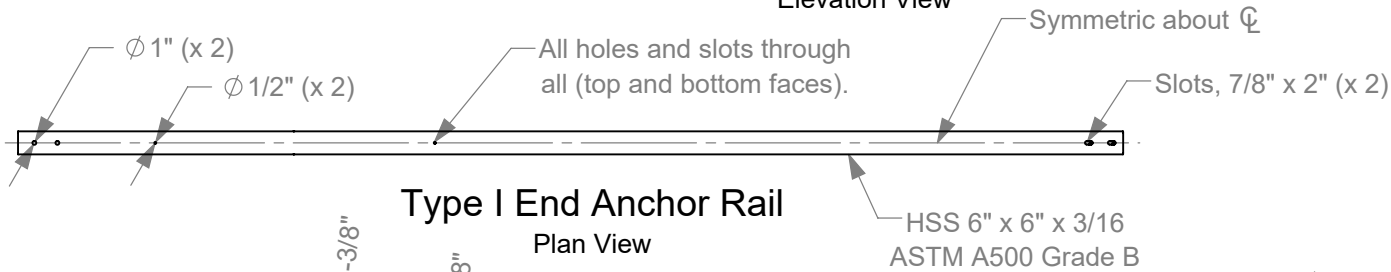
2a. All steel components, including hardware, shall be galvanized.

	Roadside Safety and Physical Security Division - Proving Ground	
	Project #610031 Wyoming Box Beam Rail	2019-02-28
Drawn by GES	Scale 1:40	Sheet 2 of 5 Type 1 End Anchorage

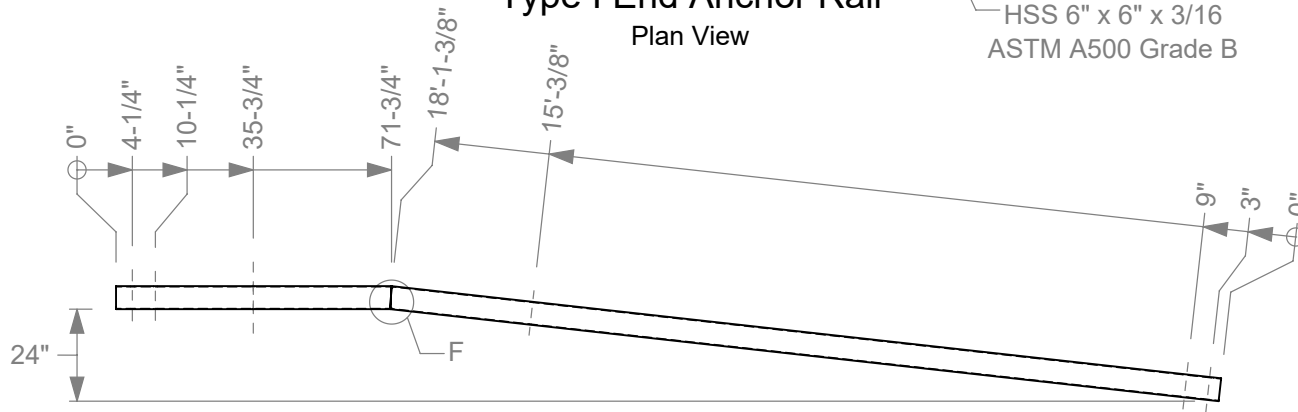
Rail Details



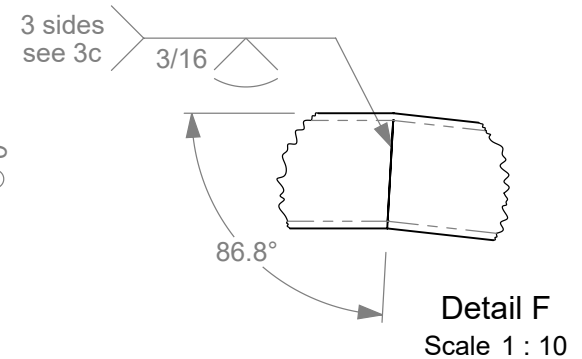
Box Beam Rail
Elevation View



Type I End Anchor Rail
Plan View



Type I End Anchor Rail
Elevation View



- 3a.** All welding must be performed by certified welders using industry standard practices.
- 3b.** Galvanize all components after fabrication is complete.
- 3c.** Cut 3 sides (inverted V-shape, 5/8" wide at bottom), bend, and weld.



Roadside Safety and Physical Security Division - Proving Ground

Project #610031 Wyoming Box Beam Rail

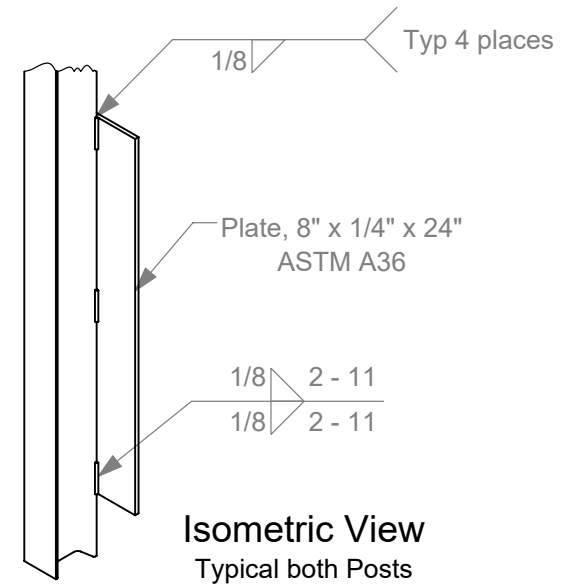
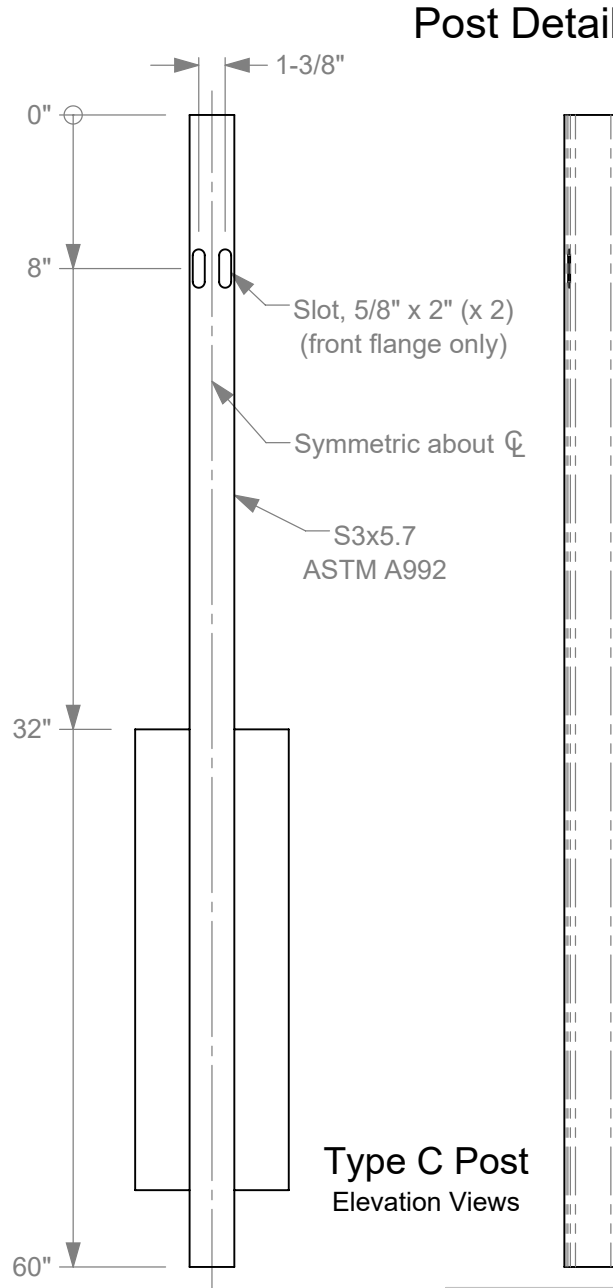
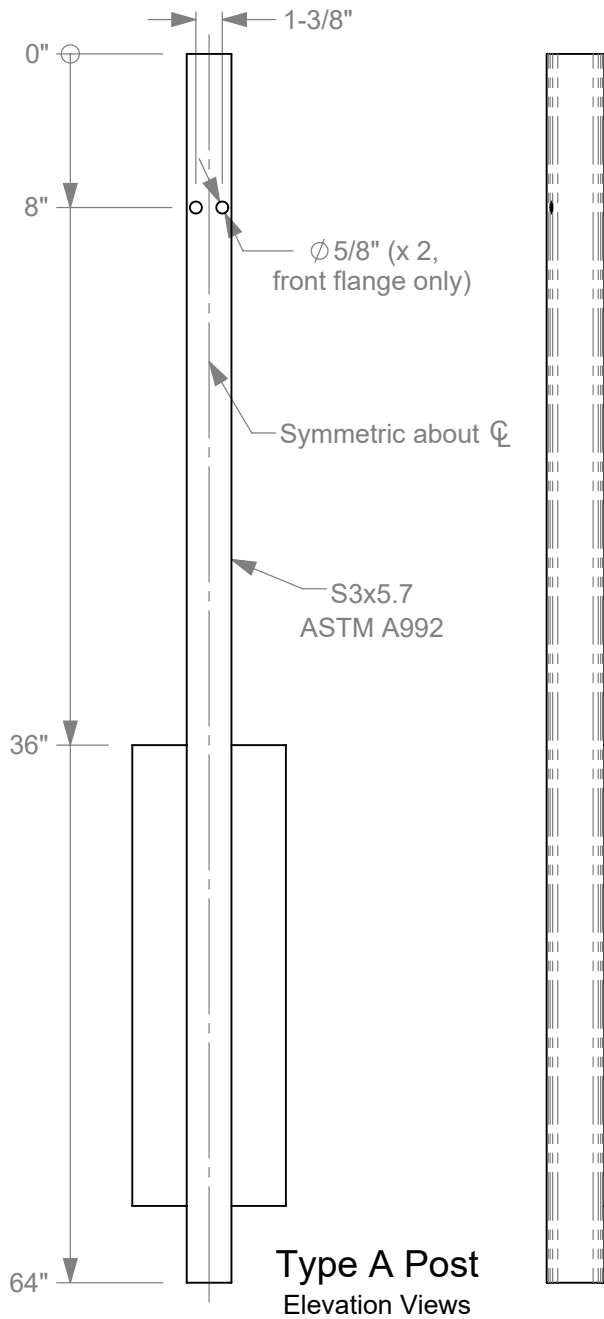
2019-02-28

Drawn by GES


Scale 1:50

Sheet 3 of 5 Rail Details

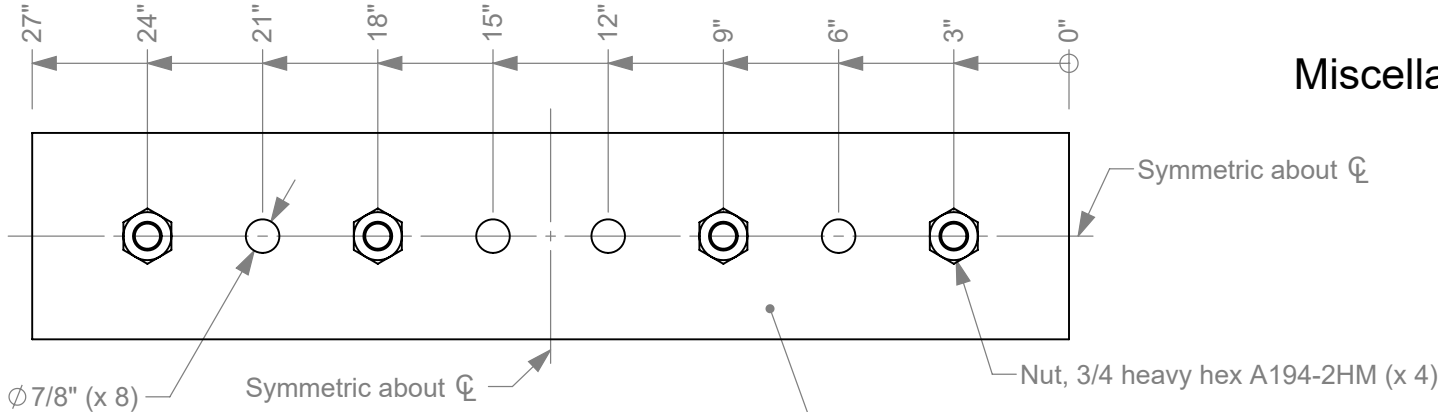
Post Details



- 4a. All welding must be performed by certified welders using industry standard practices.
- 4b. Galvanize all components after fabrication is complete.

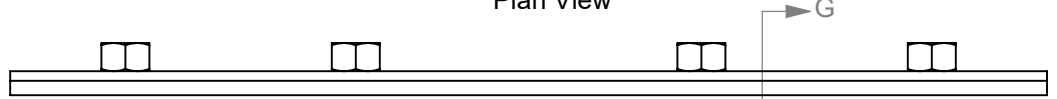
	Roadside Safety and Physical Security Division - Proving Ground	
	Project #610031 Wyoming Box Beam Rail	2019-02-28
Drawn by GES	Scale 1:10	Sheet 4 of 5 Post Details

Miscellaneous Parts



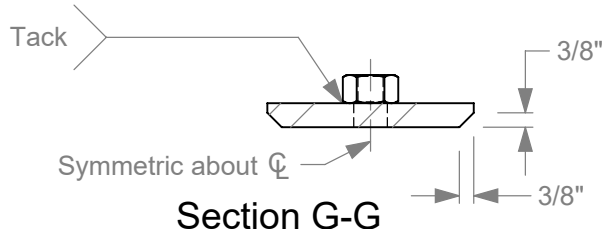
Box Beam Splice Plate

Plan View

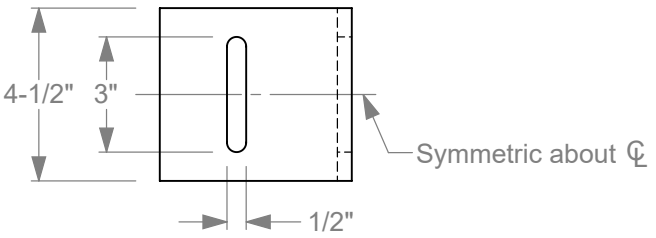


Box Beam Splice Plate

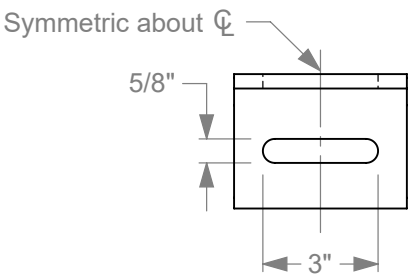
Elevation View



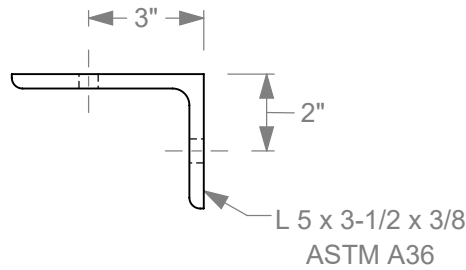
Section G-G



Symmetric about ζ

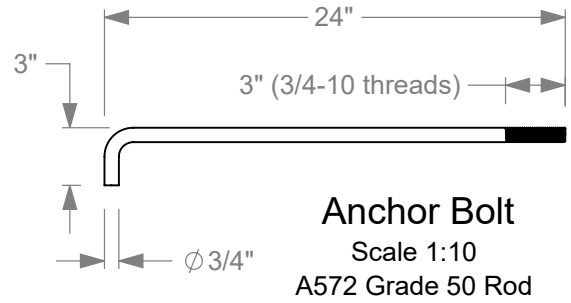


Symmetric about ζ



L 5 x 3-1/2 x 3/8
ASTM A36

B1 Box Beam Support Angle



Anchor Bolt

Scale 1:10
A572 Grade 50 Rod

- 5a. All welding must be performed by certified welders using industry standard practices.
- 5b. Galvanize all components after fabrication is complete.



Roadside Safety and Physical Security Division - Proving Ground

Project #610031 Wyoming Box Beam Rail		2019-02-28
Drawn by GES	Scale 1:5	Sheet 5 of 5 Miscellaneous Parts