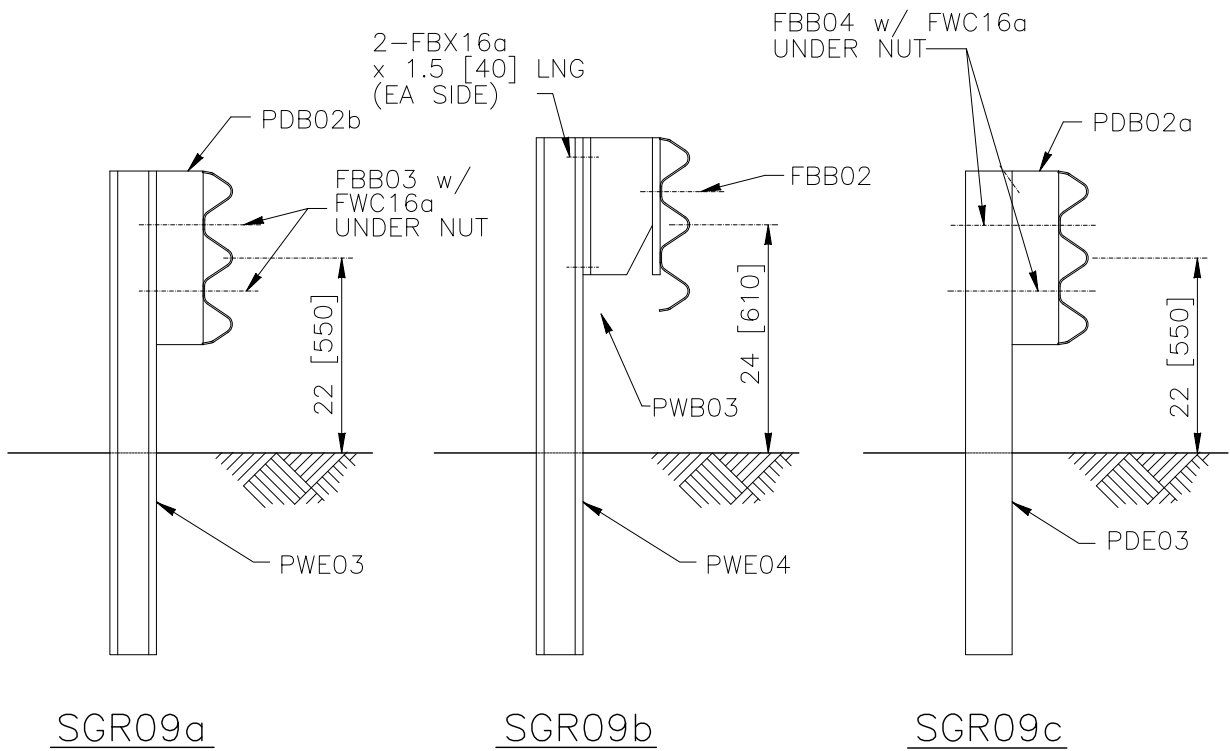


ELEVATION



1994

STRONG-POST THRIE-BEAM GUARDRAIL



SGR09a-c

SHEET NO.	DATE:
1 of 3	7/06/2005

INTENDED USE

Strong-post thrie-beam guardrails should be used in locations where there is at least 24 in. [600 mm] of available deflection space. Any common W-beam terminal can be used in conjunction with an STG01 W-beam-to-thrie-beam transition to provide a crashworthy terminal and anchorage.

SGR-09a (steel posts) and SGR09c (wood posts) with either PDB02a-b wood blockouts or approved composite blockouts are Test Level 3 barriers. SGR-09b (modified thrie-beam) is a Test Level 4 barrier.

COMPONENTS

Unit length = 150 in. [3810 mm]

Designator	Component	System	Number
FBB01	Splice bolt and nut	a,b,c	12,8,12
FBB02	Rail-blockout bolt and nut	b	2
FBB03	Rail-blockout bolt and nut	a	4
FBB04	Rail-blockout bolt and nut	c	4
FBX16a	Post-blockout bolt (1.5 inches [40 mm]) and nut	b	4
FWC16a	Round washer	a,c	4
PDB02a	Timber post blockout	c	2
PDB02b	Timber post blockout	a	2
PDE01	Timber guardrail post	c	2
PWB03	Modified thrie blockout	b	2
PWE03	Steel guardrail post	a	2
PWE04	Steel guardrail post	b	2
RTM02a	Thrie-beam rail	a-c	1
RTB01a	Thrie-beam backup plate	a-b	1

APPROVALS

FHWA Acceptance Letter B-64, 2/14/00.

REFERENCES

M.E. Bronstad, J.E. Michie and J.D. Mayer, Jr., *Performance of Longitudinal Traffic Barriers*, National Cooperative Highway Research Program Report Number 289, Transportation Research Board, June, 1987.

D.L. Ivey, R.R. Robertson and C.E. Buth, *Test and Evaluation of W-Beam and Thrie-Beam Guardrails*, Federal Highway Administration, FHWA-RD-82-071, Washington, D.C., 1986.

C.E. Buth, W.L. Campise, L.I. Griffin, M.L. Love, and D.L. Sicking, *Performance Limits of Longitudinal Barriers*, Federal Highway Administration, Report No. FHWA-RD-86-153 (vol. 1), Washington, D.C., May 1986.

STRONG-POST THRIE-BEAM GUARDRAIL

SGR09a-c

SHEET NO.

DATE

2 of 3

07/06/2005



CONTACT INFORMATION
Federal Highway Administration
Office of Safety
400 Seventh Street, SW
Washington, DC 20590
202-366-2288

STRONG-POST THRIE-BEAM GUARDRAIL

SGR09a-c



SHEET NO.

DATE

3 of 3

07/06/2005