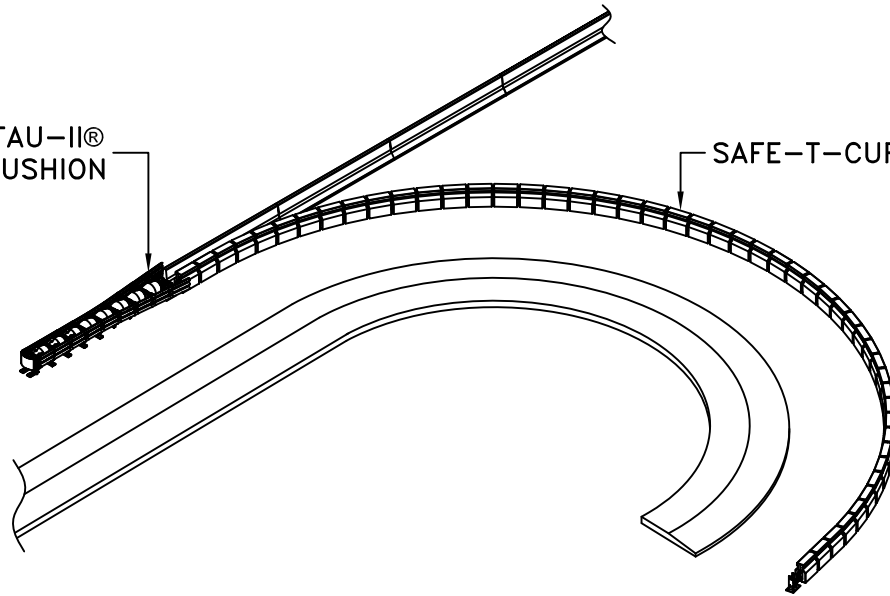
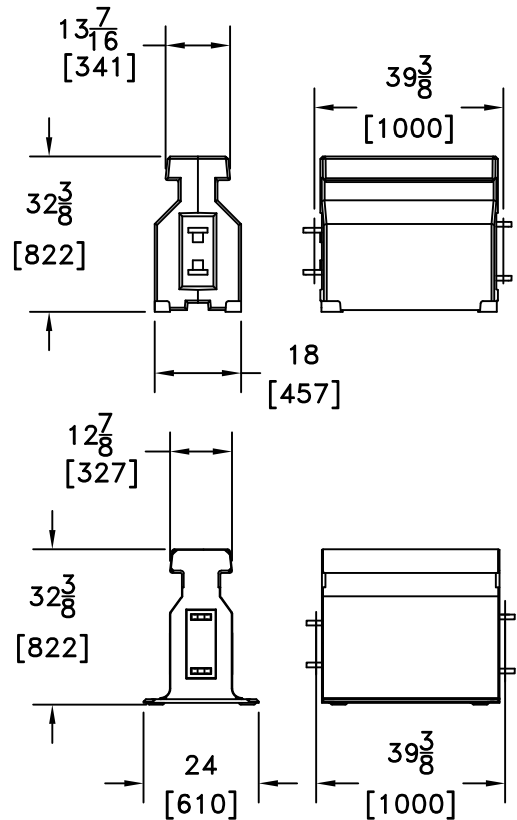
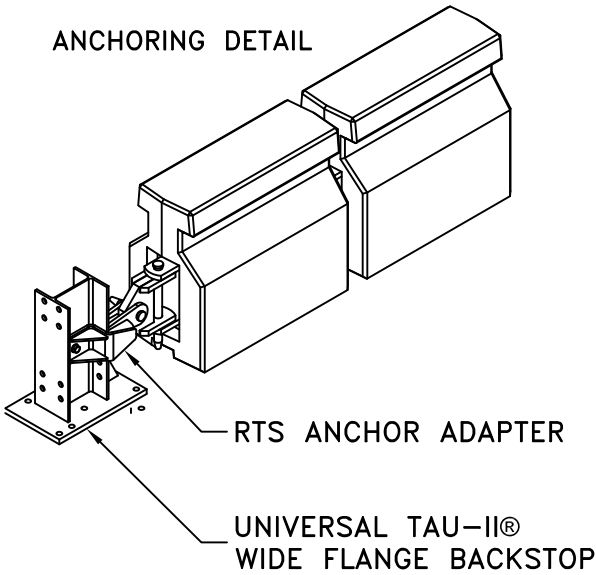


UNIVERSAL TAU-II®
CRASH CUSHION

SAFE-T-CURVE BARRIER



ANCHORING DETAIL



SAFE-T-CURVE BARRIER

BARRIER SYSTEMS™

BY LINDSAY

Lindsay Transportation Solutions
180 River Road
Rio Vista, CA 94571
Tel: 888-800-3691
www.barriersystemsinc.com

SGR15

SHEET NO.

DATE:

1 OF 2

06/19/13

INTENDED USE

The Safe-T-Curve Barrier is designed to be used at very tight radius curves, typically at exits and where the curve is headed by a gore point or has limited space resulting in unacceptable or marginally unacceptable geometrics (i.e. very tight exit curves). This system has been tested on tangent and curved sections and approved down to a 100 ft [30 m] radius.

The Safe-T-Curve utilizes standard concrete or steel Reactive Tension® System - QuickChange® Moveable Barrier (RTS-QMB) (SGM22) anchored on each end with a wide flange back support section from the Universal TAU-II® or TAU-II-R Crash Cushion (SCT01, SCT01c). If placed in front of a backing or existing barrier, the system should be offset a minimum of 26.5 inches [675 mm]. The system exhibits excellent impact performance and very minimal material damage. The design deflection for Test Level 3 is 26.5 inches [675 mm].

Concrete Reactive Tension System (SGM22) is a heavily reinforced concrete barrier connected end to end with tensioning hinge mechanisms and steel pins. Each barrier segment is approximately 39 in [1.0 m] long and weighs approximately 1500 lb (680 kg). The barrier is 18 in [460 mm] wide.

Steel Reactive Tension System (SGM22) is a steel shelled barrier filled with high strength concrete connected end to end with tensioning hinge mechanisms and steel pins. Each barrier segment is approximately 39 in [1.0 m] long and weighs approximately 1600 lb (725 kg). The barrier has a 24 in [610 mm] base and 13 in [330 mm] effective barrier width.

Contact manufacturer for further information.

APPROVALS

The Safe-T-Curve system has been tested in conformance with NCHRP Report 350 Test Level 3 and accepted by FHWA.

FHWA Acceptance Letter: HAS-10/B-69A, September 7, 2004

CONTACT INFORMATION

Lindsay Transportation Solutions
180 River Rd.
Rio Vista, CA 94571
www.barriersystemsinc.com
Phone: 888-800-3691 or 707-374-6800
Fax: 707-374-6801
Email: info@barriersystemsinc.com

SAFE-T-CURVE BARRIER

SGR15

SHEET NO.

DATE:

2 OF 2

06/19/13



Lindsay Transportation Solutions
180 River Road
Rio Vista, CA 94571
Tel: 888-800-3691
www.barriersystemsinc.com