

Isometric View

LOW-PROFILE CONCRETE BARRIER

SGR31



SHEET NO.	DATE:
-----------	-------

1 of 6

9/9/2011

INTENDED USE

Low-Profile Concrete Barrier is a non-proprietary system and should be used in locations where a working width of 18" [457] is provided. The concrete used for the Low-Profile Concrete Barrier should have a minimum compressive strength of 4,500 psi [31.03 MPa]. The Low-Profile Concrete Barrier was designed for use on a roadway surface fabricated using concrete with a minimum compressive strength of 4,000 psi [28 MPa]. The Low-Profile Concrete Barrier is intended for use with the Low-Profile Concrete Barrier End Treatment SER03. The Low-Profile Concrete Barrier system is anchored to the roadway surface by bending vertical reinforcing bars into j-shapes and tying them to transverse deck bars in order to develop their full capacity. The Low-Profile Concrete Barrier is TL-2 NCHRP 350 accepted.

COMPONENTS

Unit Length = 24" [610]

DESIGNATOR	COMPONENT	SYSTEM	NUMBER
-	See Bill of Bars		-

ACCEPTANCE

FHWA Acceptance Letter B-116, March 27, 2003.

REFERENCES

Polivka, K.A., Faller, R.K., Sicking, D.L., Rohde, J.R., Reid, J.D., and Holloway, J.C., *Development of a Low-Profile Bridge Rail for Test Level 2 Applications*, Final Report to the Midwest State's Regional Pooled Fund Program, Transportation Research Report No. TRP-03-109-02, Project No. SPR-3(017)-Year 11, Midwest Roadside Safety Facility, University of Nebraska-Lincoln, August 20, 2002.

CONTACT INFORMATION

Midwest Roadside Safety Facility
Nebraska Transportation Center
University of Nebraska-Lincoln
2200 Vine Street
130 Whittier Research Center
Lincoln, NE 68583-0965
(402) 472-0965
Email: mwrsf@unl.edu
Website: <http://mwrsf.unl.edu/>



LOW-PROFILE CONCRETE BARRIER

SGR31

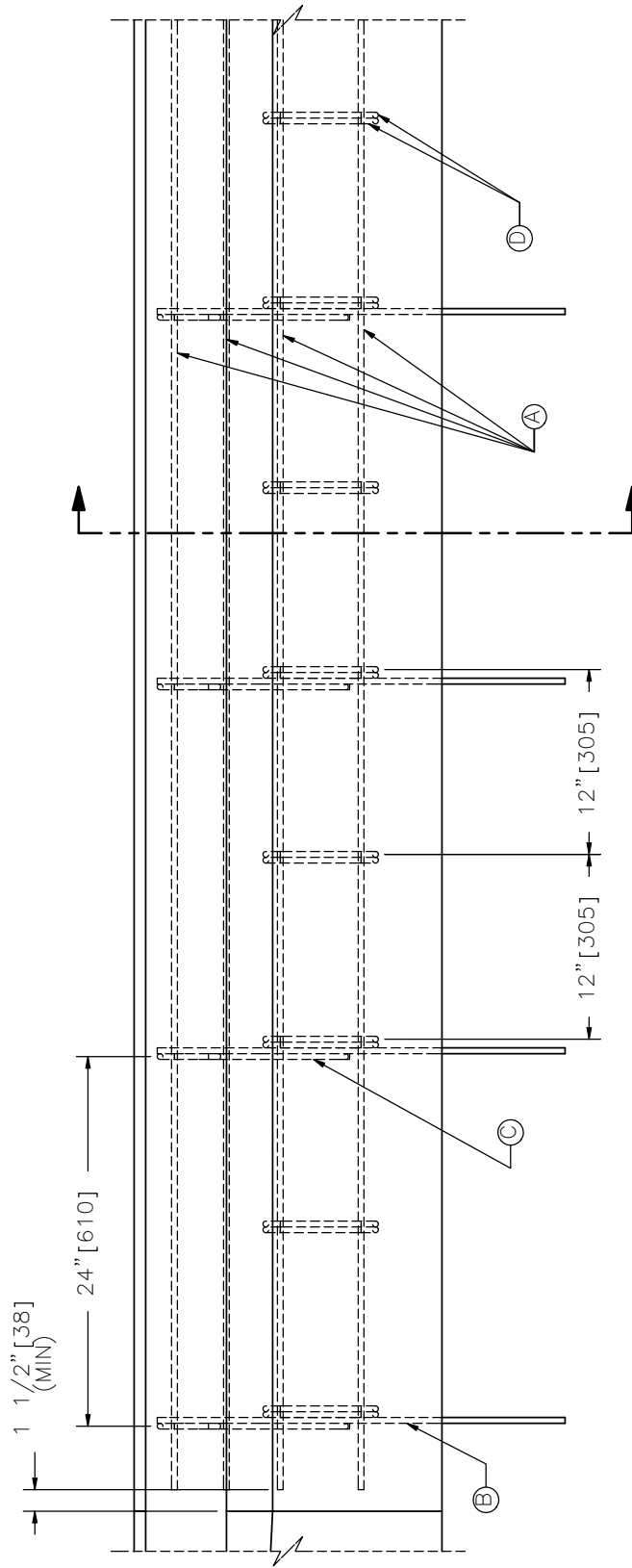
SHEET NO.

DATE:

2 of 6

9/9/2011





PROFILE VIEW

LOW-PROFILE,
CONCRETE BARRIER
END TREATMENT (SER03)

Note: A minimum overlap of 9" [229] is to be used for all longitudinal rebar.

LOW-PROFILE CONCRETE BARRIER



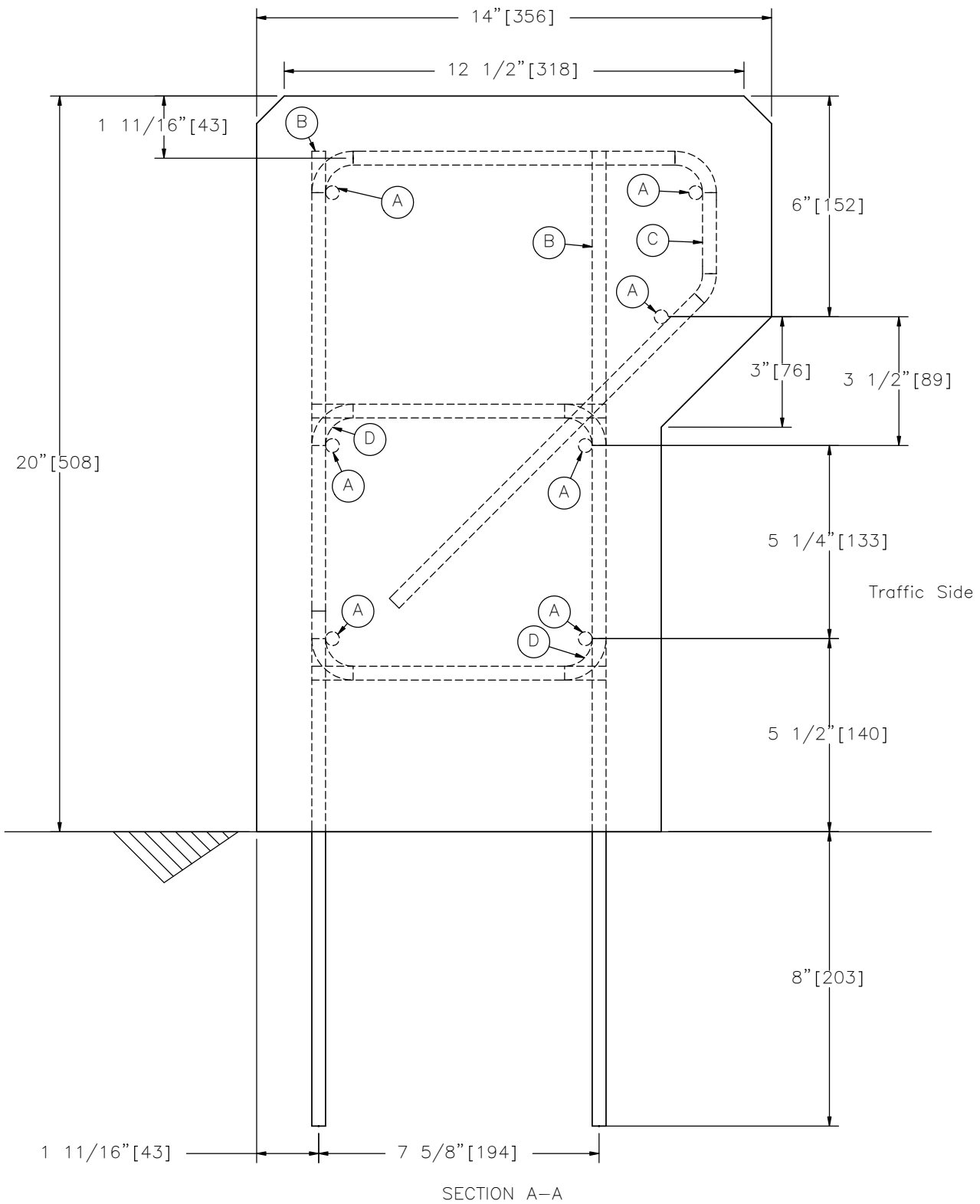
SGR31

SHEET NO.

DATE:

3 of 6

9/9/2011



LOW-PROFILE CONCRETE BARRIER

SGR31

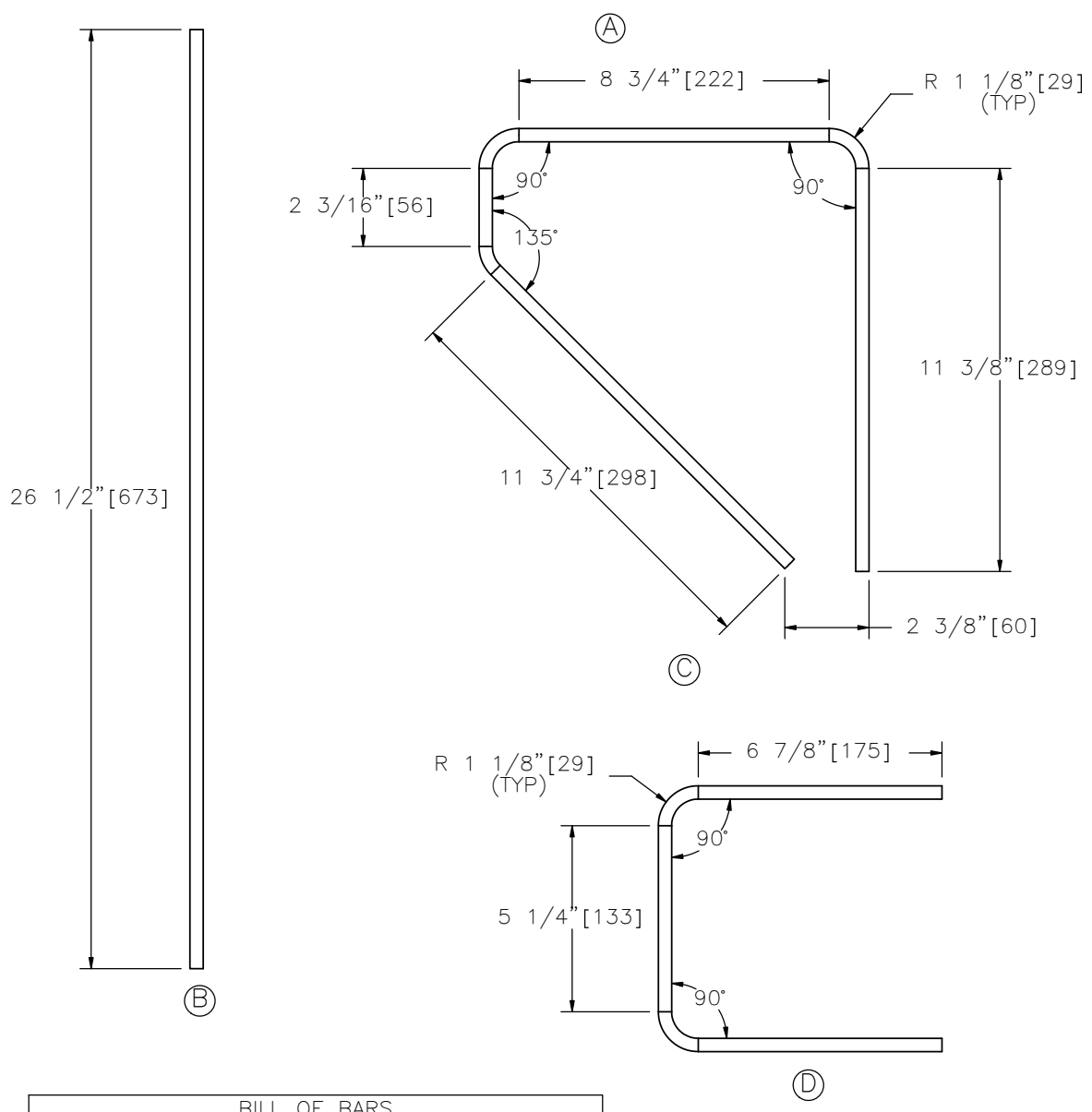
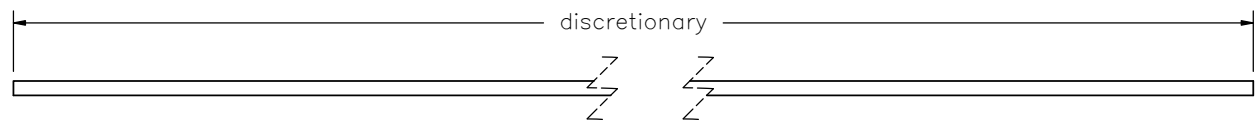
SHEET NO.

DATE:

4 of 6

9/9/2011





BILL OF BARS				
	Bar No.	No.	Length	Material
	3	7	*	A615 Gr. 60
B	3	4	26 1/2" [673]	A615 Gr. 60
C	3	2	37 1/2" [953]	A615 Gr. 60
D	3	4	21 7/8" [556]	A615 Gr. 60

*Total length of longitudinal bar should allow for a minimum of 1 1/2" [38] of cover at the ends. Length of longitudinal bar is up to the user as long as length is added for the number of corresponding laps with a minimum lap of 9" [229].

LOW-PROFILE CONCRETE BARRIER



SGR31

SHEET NO.	DATE:
5 of 6	9/9/2011

THIS PAGE LEFT INTENTIONALLY BLANK

LOW-PROFILE CONCRETE BARRIER

SGR31



SHEET NO.

DATE:

6 of 6

9/9/2011