

TRAFFIC SIDE
ISOMETRIC VIEW

NCHRP 350 TL-2 ROUGH STONE MASONRY GUARDWALL



SGR37

SHEET NO.

DATE:

1 of 14

07/29/2011

INTENDED USE

Rough Stone Masonry Guardwall system is intended for applications where an aesthetically-pleasing barrier is desired. The barrier system was configured with a reinforced concrete, inner core wall and support foundation system which requires a minimum 28-day concrete compression strength of 3,500 psi (24.13 MPa). The Rough Stone Masonry Guardwall system's inner core wall was rigidly attached to a support slab or foundation using vertical steel reinforcing bars. A 6-in. [152] thick aggregate base was placed under the concrete support slab or foundation. The Rough Stone Masonry Guardwall system should be constructed with a 22-in. [559] top mounting height, which provides a 2-in. [51] downside construction tolerance as well as allows for future pavement overlays placed adjacent to the barrier system if 2 in. [51] thick or less. The Rough Stone Masonry Guardwall system has been successfully crash tested according to the Test Level 2 (TL-2) guidelines provided in National Cooperative Highway Research Program (NCHRP) Report No. 350.

INTERIOR SECTION COMPONENTS

Unit Length = 144" [3658 mm]

DESIGNATOR	COMPONENT	QUANTITY PER UNIT
-	See Bill of Bars	-
a4	Dovetail Anchor Slot 21" [533] Long	5
a5	Dovetail Anchor Slot 11" [279] Long*	1
a6	Dovetail Anchor Tie (12 on front and 6 on top)	18
a7	5x3x½" [127x76x13] Interior Angle	2
a10	¾" [19] Ø by 6" [152] Long Wedge-Bolt Screw Anchor	10
a11	Z-Clips (6 in front and 6 on top)	12
a12	Heavy-Weight, Tapcon Masonry Anchors	12
b1	Aggregate Base	-
b2	Concrete Corewall Base	-
b3	Concrete Corewall Top	-
c1	Rough Stone Masonry Façade (Rubble Masonry)	-
c2	Mortar Bed-PROMIX Stone Veneer Mortar	-

*Use a5 in lieu of a4 when a weep hole intersects an anchor slot.

NCHRP 350 TL-2 ROUGH STONE MASONRY GUARDWALL

SGR37

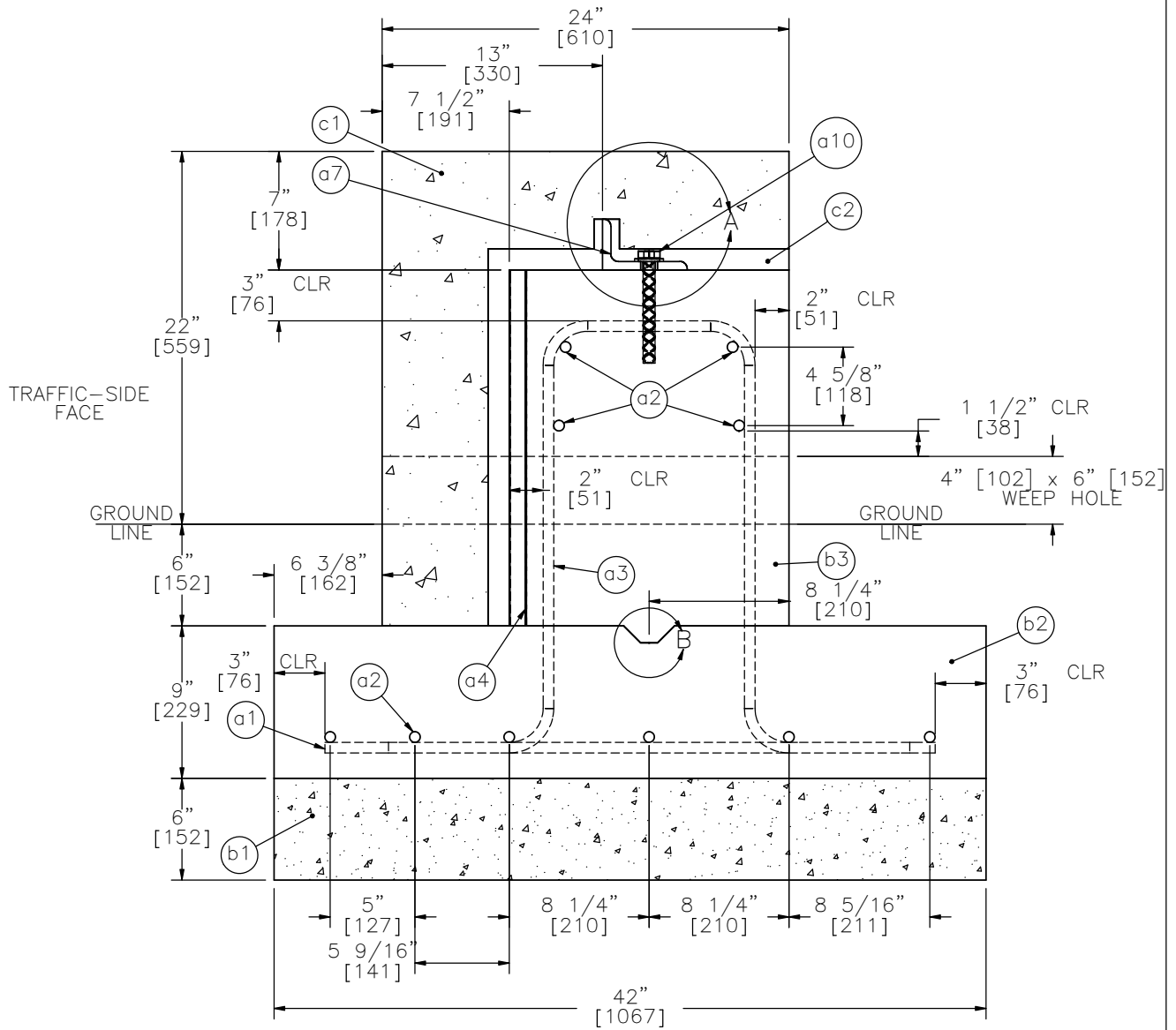


SHEET NO.

DATE:

2 of 14

07/29/2011



NCHRP 350 TL-2 ROUGH STONE MASONRY GUARDWALL



SGR37

SHEET NO.

DATE:

3 of 14

07/29/2011

END SECTION COMPONENTS

Unit Length = 56 5/16" [1430]

DESIGNATOR	COMPONENT	QUANTITY PER UNIT
-	See Bill of Bars	-
a4	Dovetail Anchor Slot 21" [533] Long	2
a6	Dovetail Anchor Tie (4 on front and 3 on top)	7
a8	5x3x1/2" [127x76x13] Upstream End Angle	1
a10	3/4" [19] Ø by 6" [152] Long Wedge-Bolt Screw Anchor	4
a11	Z-Clips (3 on front and 3 on top)	6
a12	Heavy-Weight, Tapcon Masonry Anchors	6
b1	Aggregate Base	-
b2	Concrete Corewall Base	-
b3	Concrete Corewall Top	-
c1	Rough Stone Masonry Façade (Rubble Masonry)	-
c2	Mortar Bed-PROMIX Stone Veneer Mortar	-

ACCEPTANCE

FHWA Acceptance Letter B-202, April 16, 2010

REFERENCES

Johnson, E.A., Faller, R.K., Reid, J.D., Sicking, D.L., Bielenberg, R.W., Lechtenberg, K.A., and Rosenbaugh, S.K., *Analysis, Design, and Dynamic Evaluation of a TL-2 Rough Stone Masonry Guardwall*, Final Report to the Federal Highway Administration, Central Federal Lands Highway Division, Transportation Research Report No. TRP-03-217-09, Midwest Roadside Safety Facility, University of Nebraska-Lincoln, May 6, 2009.

Reid, J.D. and Faller, R.K., *A New TL-2 Rough Stone Masonry Guardwall*, Paper No. 10-0087, Transportation Research Record No. 2195, Journal of the Transportation Research Board, Washington, D.C., 2010.

CONTACT INFORMATION

Midwest Roadside Safety Facility
Nebraska Transportation Center
University of Nebraska-Lincoln
130 Whittier Research Center
2200 Vine Street
Lincoln, NE 68583-0853
(402) 472-0965
Email: mwrfsf@unl.edu
Website: <http://mwrfsf.unl.edu/>



NCHRP 350 TL-2 ROUGH STONE MASONRY GUARDWALL

SGR37

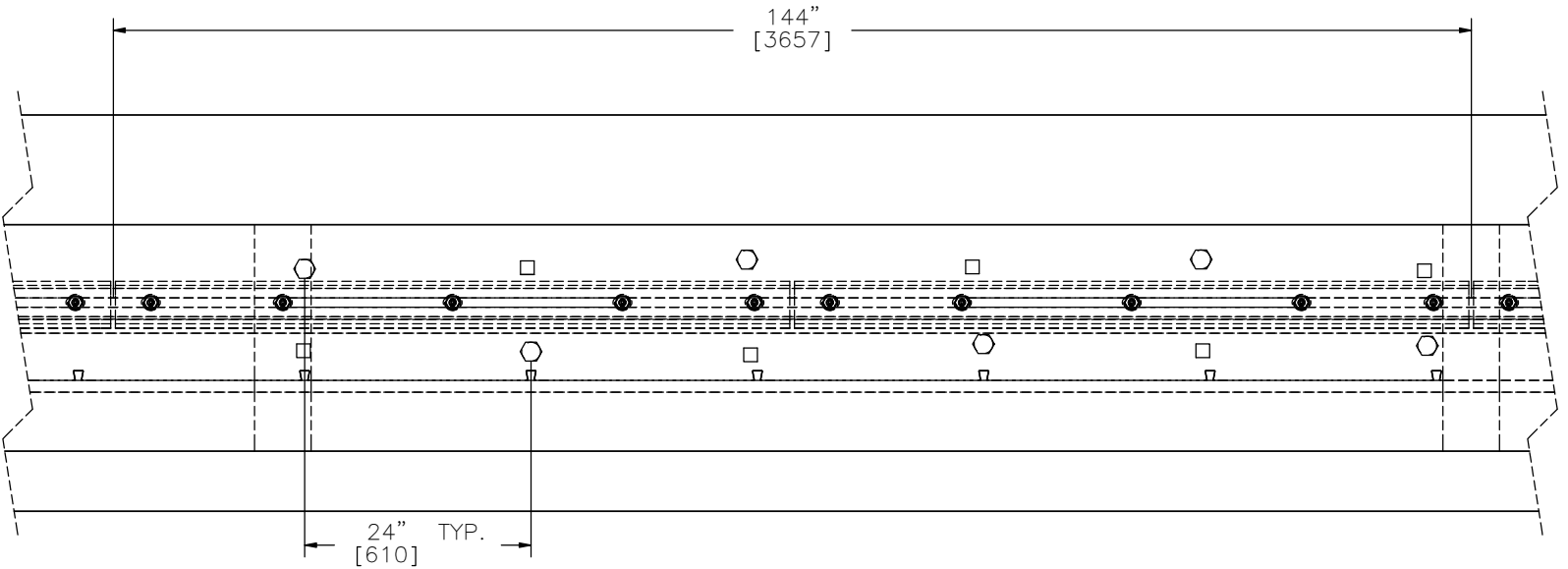
SHEET NO.

DATE:

4 of 14

07/29/2011

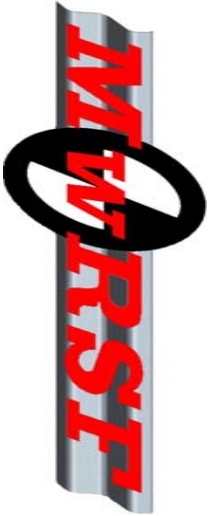




INTERIOR SECTION
TOP VIEW
Z-CLIPS AND DOVETAIL ANCHOR SUGGESTED LOCATIONS

- Z-CLIPS LOCATIONS
- TYPE 106 DOVETAIL ANCHOR LOCATIONS

NCHRP 350 TL-2 ROUGH STONE MASONRY GUARDWALL



SGR37

SHEET NO.

DATE:

5 of 14

07/29/2011

DETAIL A NOTES:

- (1) THE CAPSTONES PLACED ON THE TOP OF THE BARRIER SHALL BE KERFED TO ALL FOR THEIR PLACEMENT OVER THE STEEL ANGLE. THE KERF WIDTH SHALL BE APPROXIMATELY 1" TO 1 1/2" [25 TO 38] WIDE. THE MAXIMUM KERF DEPTH SHALL BE 2 1/2" [64] ALTHOUGH THINNER KERF DEPTHS ARE ALLOWED AS LONG AS ALL OTHER GEOMETRIES ARE MET.
- (2) THE TOP MORTAR BED THICKNESS SHALL RANGE BETWEEN 1/2" AND 2" [13 AND 52] FOR RUBBLE STONE MASONRY. THE TOP CAPSTONE THICKNESS SHALL RANGE BETWEEN 5 TO 6 1/2 in. [127 TO 165].
- (3) MORTAR SHALL FILL THE VOID REGION SURROUNDING THE ANGLE'S VERTICAL LEG WHEN THE CAPSTONES ARE SET IN PLACE.
- (4) THE FIRST 36' TO 38' [11.0 TO 11.6 m] OF BARRIER SHALL BE CONSTRUCTED WITH CAPSTONES COVERING THE ENTIRE WIDTH OF 24 in. [610], THUS REVEALING A MORTAR JOINT ON THE FRONT FACE.
- (5) THE REMAINING BARRIER LENGTH SHALL BE CONSTRUCTED USING ALTERNATING FACE AND TOP STONES TO MEET UP AT THE TOP-FRONT CORNER OF THE BARRIER.
- (6) FOR TOP CAPSTONE THICKNESSES GREATER THAN 5 7/8" [149], IT WILL BE NECESSARY TO CHISEL THE BOTTOM OF THE STONE TO FORM A DISH TO ALLOW ITS PLACEMENT OVER THE HEADS OF THE WEDGE-BOLT SCREW ANCHORS.
- (7) TWO TYPES OF STEEL ANCHORS WERE USED TO PROVIDE VERTICAL ATTACHMENT OF THE STONE MASONRY TO THE TOP OF THE INNER CORE WALL. TYPE 106 CORRUGATED DOVETAIL ANCHOR TIES (16 GAUGE [1.5] BY 5 1/2" [140] LONG) WERE WEDGED UNDER THE TOP-MOUNTING ANGLES AND BENT UPWARD TO ENGAGE THE MORTAR. THE TYPE 106 TIES WERE SPACED APPROXIMATELY ON 2' [610] CENTERS, ALTERNATING SIDES OF THE STEEL ANGLES. STAINLESS STEEL (SS 304) Z-CLIPS WERE ALSO USED TO ANCHOR THE STONE MASONRY USING 1/4" [6.4] DIAMETER BY 2 3/4" [70] LONG, HEAVY-WEIGHT STAINLESS STEEL TAPCON MASONRY ANCHORS. THE Z-CLIPS WERE SPACED APPROXIMATELY ON 2' [610] CENTERS, ALTERNATING SIDES OF THE STEEL ANGLES, AND USED TO ENGAGE A RECESS CUT IN THE STONE.
- (8) DOVETAIL ANCHOR TIES SHALL BE MILL GALVANIZED STEEL ASTM A653 OR HOT DIP GALVANIZED ASTM A153.

NCHRP 350 TL-2 ROUGH STONE MASONRY GUARDWALL

SGR37

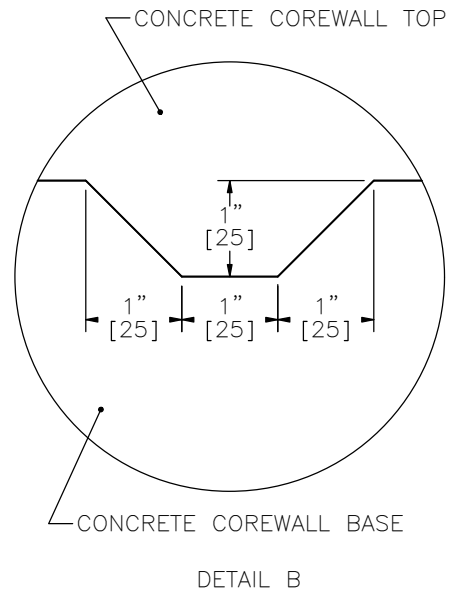
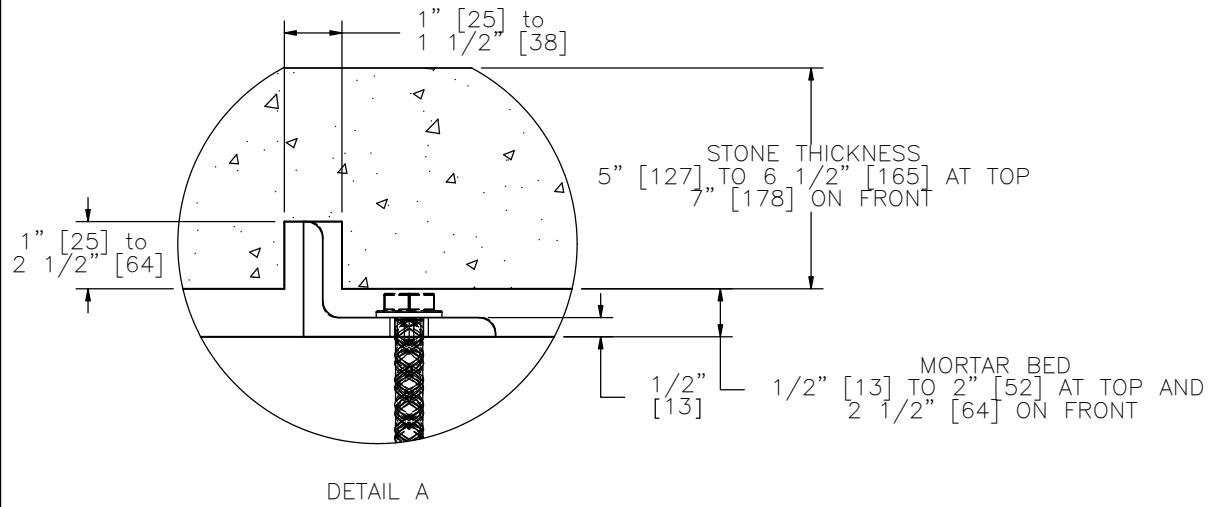


SHEET NO.

DATE:

6 of 14

07/29/2011



NCHRP 350 TL-2 ROUGH STONE MASONRY GUARDWALL



SGR37

SHEET NO.

DATE:

7 of 14

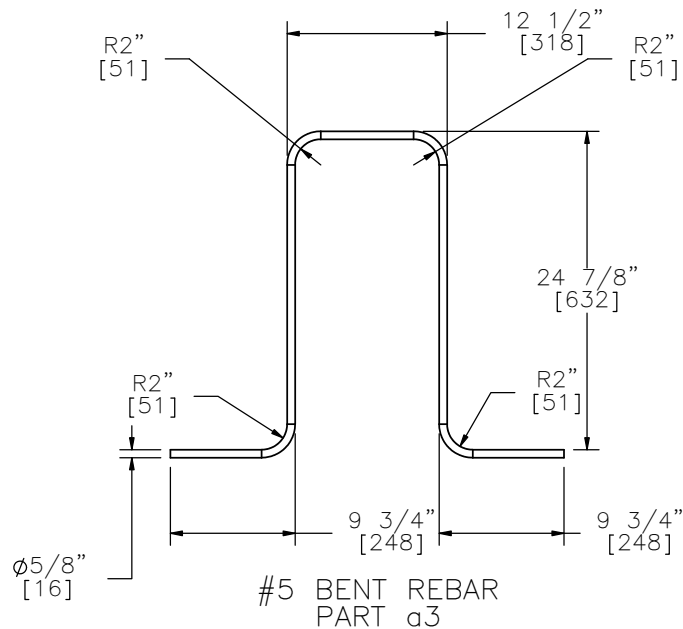
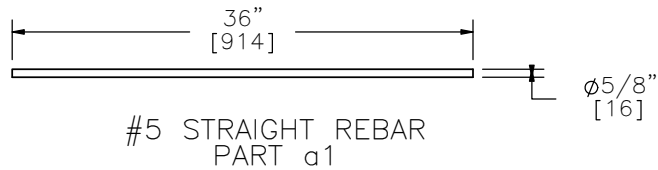
07/29/2011

INTERNAL SECTION BILL OF BARS

ITEM NO.	DESCRIPTION	MATERIAL SPECIFICATIONS	QTY. PER UNIT
a1	#5 STRAIGHT REBAR, 36" [914] LONG	GRADE 60	8
a2	#5 STRAIGHT REBAR, 246" [6069] LONG	GRADE 60	10
a3	#5 BENT REBAR	GRADE 60	8

END SECTION BILL OF BARS

ITEM NO.	DESCRIPTION	MATERIAL SPECIFICATIONS	QTY. PER UNIT
a1	#5 STRAIGHT REBAR, 36" [914] LONG	GRADE 60	6
a2	#5 STRAIGHT REBAR, 246" [6069] LONG	GRADE 60	10
a3	#5 BENT REBAR	GRADE 60	6



NCHRP 350 TL-2 ROUGH STONE MASONRY GUARDWALL

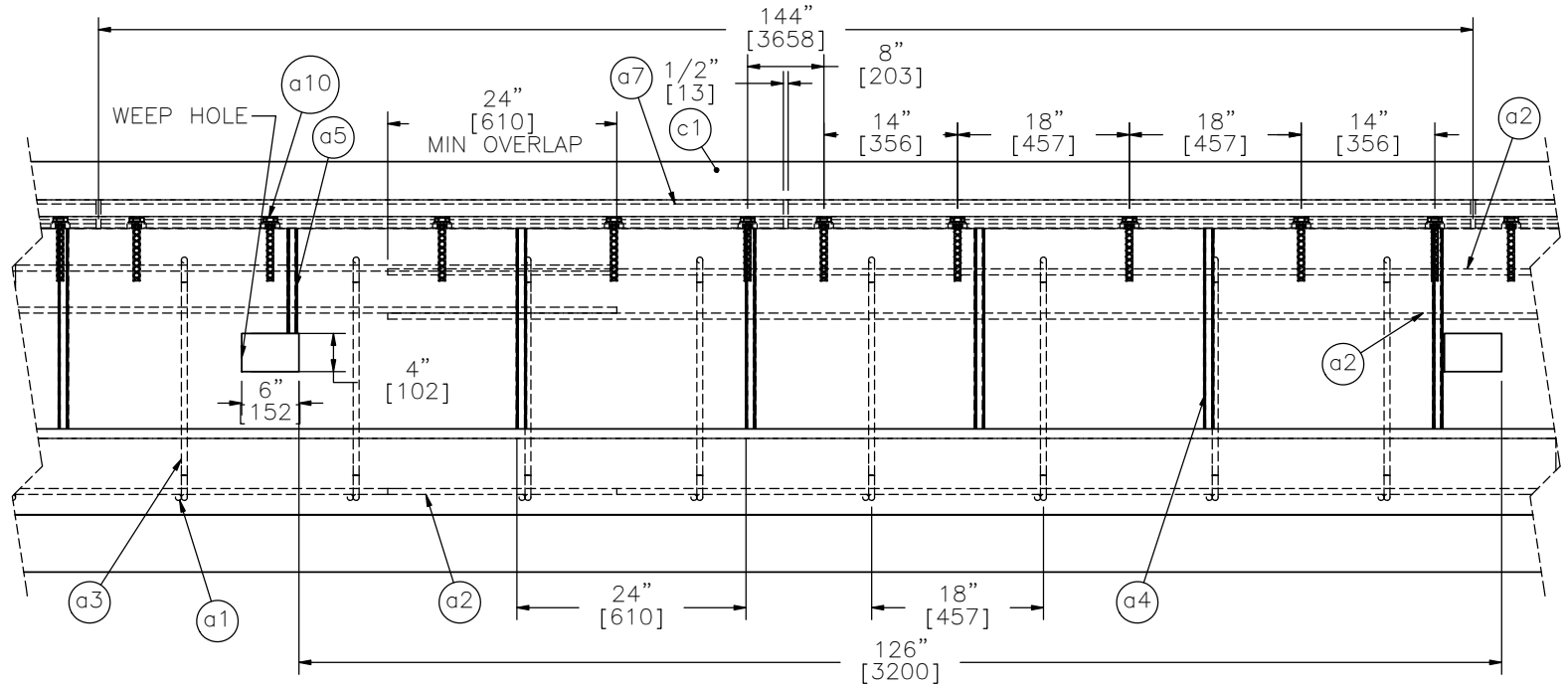
SGR37



SHEET NO.	DATE:
8 of 14	07/29/2011



NCHRP 350 TL-2 ROUGH STONE MASONRY GUARDWALL



INTERIOR SECTION
PROFILE VIEW

- NOTES:
- (1) THE OPEN CHANNELS IN THE DOVETAIL ANCHOR SLOTS ARE 1"x1"x5/8" [25x25x16] AND ARE FOAM FILLED TO PROTECT THE SLOT DURING CONCRETE FORMING AND PLACEMENT.
 - (2) TWO TYPE 106 DOVETAIL ANCHOR TIES SHALL BE PLACED IN EACH DOVETAIL ANCHOR SLOT TO ATTACH THE RUBBLE STONE MASONRY TO THE FRONT FACE OF THE INNER CORE WALL.
 - (3) BEND AT LEAST 25 PERCENT OF DOVETAIL ANCHOR TIES AT A SHORT RIGHT ANGLE TO ENGAGE A RECESS CUT IN THE STONE. EXTEND THE ANCHORS TO WITHIN 3" [76] OF THE EXPOSED FACE OF THE STONE WORK.
 - (4) STAINLESS STEEL (SS, 304) Z-CLIPS WERE ALSO USED TO ANCHOR THE STONE MASONRY USING 1/4" [6.4] DIAMETER BY 2 3/4" [70] LONG, HEAVY-WEIGHT, STAINLESS STEEL TAPCON MASONRY ANCHORS TO THE FRONT FACE OF THE GUARDWALL. THE Z-CLIPS WERE SPACED APPROXIMATELY ON 2' [610] CENTERS AND USED TO ENGAGE A RECESS CUT IN THE STONE.

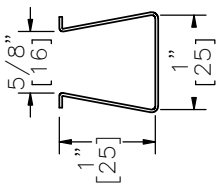
9 of 14

SHEET NO.

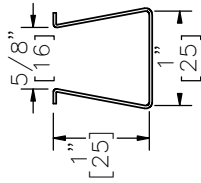
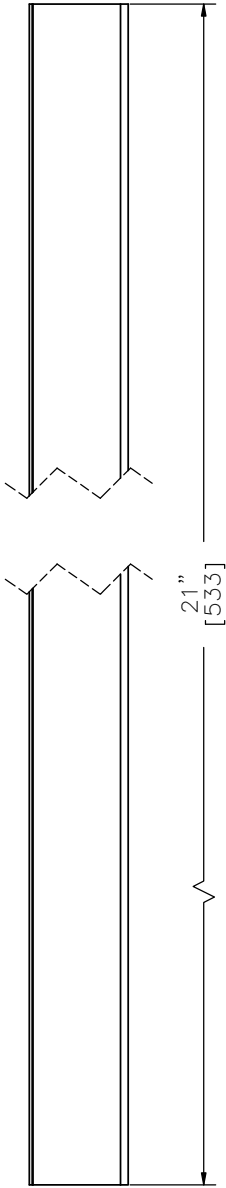
SGR37

DATE:

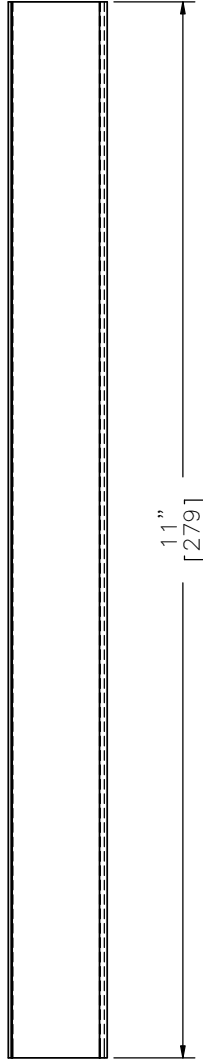
07/29/2011



DOVETAIL ANCHOR SLOT
22-GAUGE [0.8]
PART 04



DOVETAIL ANCHOR SLOT
22-GAUGE [0.8]
PART 05



NOTES:

- (1) THE FINISH FOR THE DOVETAIL ANCHOR SLOTS SHALL BE MILL GALVANIZED STEEL ASTM A653, HOT DIP GALVANIZED STEEL ASTM A153, OR CLASS B2 DEPENDING UPON THE MATERIAL SELECTED.
- (2) TWO DOVETAIL ANCHOR TIES SHALL BE USED WITH EACH DOVETAIL ANCHOR SLOT IN ORDER TO ATTACH THE RUBBLE STONE MASONRY TO THE FACE OF THE INNER CONCRETE CORE WALL. TYPE 106 (16 GAUGE [1.5] BY 5 1/2" [140] LONG) DOVETAIL CORRUGATED ANCHORS SHALL BE MILL GALVANIZED STEEL ASTM A653 OR HOT DIP GALVANIZED STEEL ASTM A153.
- (3) BEND AT LEAST 25 PERCENT OF ANCHOR TIES AT A SHORT RIGHT ANGLE TO ENGAGE A RECESS CUT IN THE STONE. EXTEND THE ANCHORS TO WITHIN 3" [76] OF THE EXPOSED FACE OF THE STONE WORK.

NCHRP 350 TL-2 ROUGH STONE MASONRY GUARDWALL

SGR37

SHEET NO.

DATE:

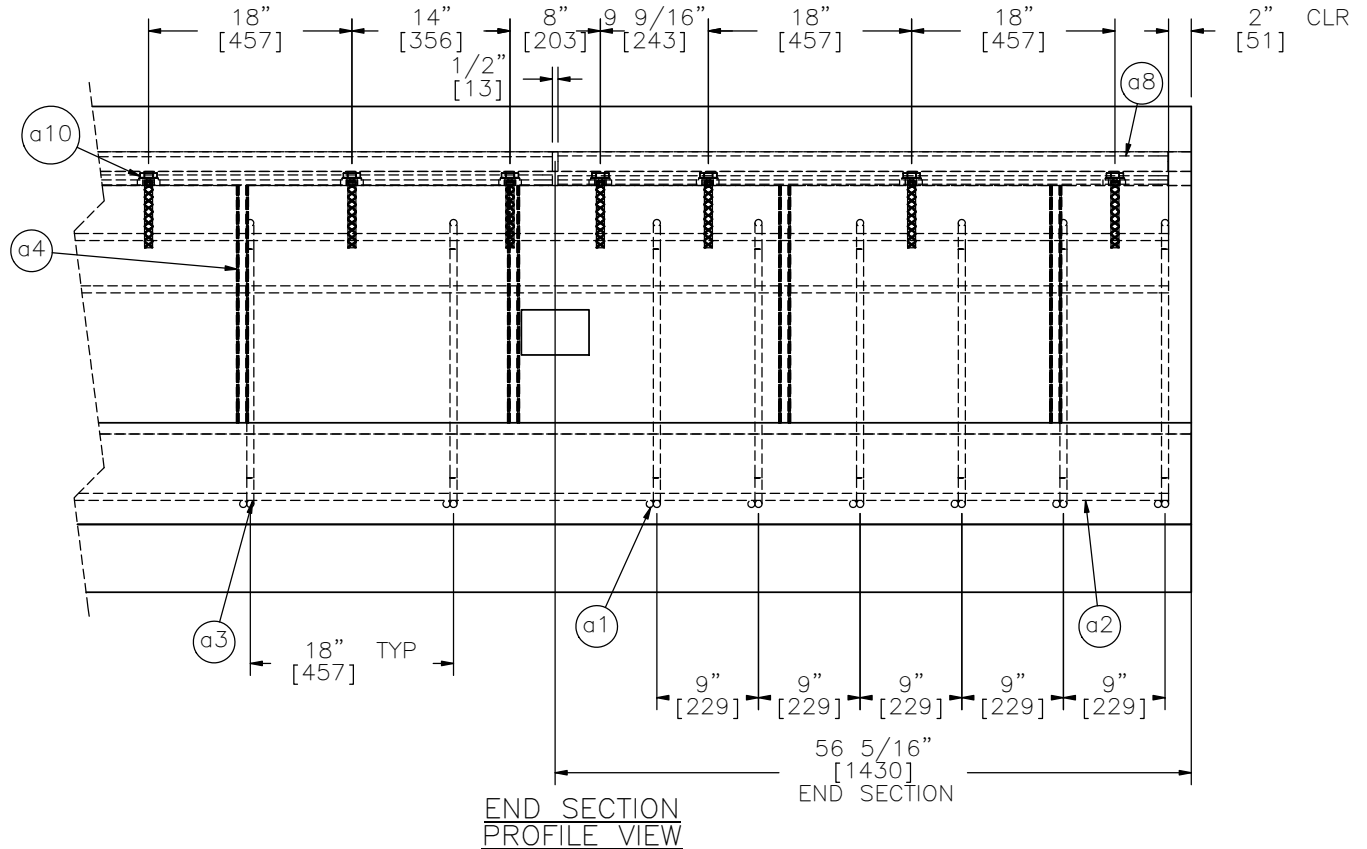
10 of 14

07/29/2011





NCHRP 350 TL-2 ROUGH STONE MASONRY GUARDWALL



END SECTION
PROFILE VIEW

NOTES:

- (1) THE OPEN CHANNELS IN THE DOVETAIL ANCHOR SLOTS ARE 1"x1"x5/8" [25x25x16] AND ARE FOAM FILLED TO PROTECT THE SLOT DURING CONCRETE FORMING AND PLACEMENT.
- (2) TWO TYPE 106 DOVETAIL ANCHOR TIES SHALL BE PLACED IN EACH DOVETAIL ANCHOR SLOT TO ATTACH THE RUBBLE STONE MASONRY TO THE FRONT FACE OF THE INNER CORE WALL.
- (3) BEND AT LEAST 25 PERCENT OF DOVETAIL ANCHOR TIES AT A SHORT RIGHT ANGLE TO ENGAGE A RECESS CUT IN THE STONE. EXTEND THE ANCHORS TO WITHIN 3" [76] OF THE EXPOSED FACE OF THE STONE WORK.
- (4) STAINLESS STEEL (SS, 304) Z-CLIPS WERE ALSO USED TO ANCHOR THE STONE MASONRY USING 1/4" [6.4] DIAMETER BY 2 3/4" [70] LONG, HEAVY-WEIGHT, STAINLESS STEEL TAPCON MASONRY ANCHORS TO THE FRONT FACE OF THE GUARDWALL. THE Z-CLIPS WERE SPACED APPROXIMATELY ON 2' [610] CENTERS AND USED TO ENGAGE A RECESS CUT IN THE STONE.

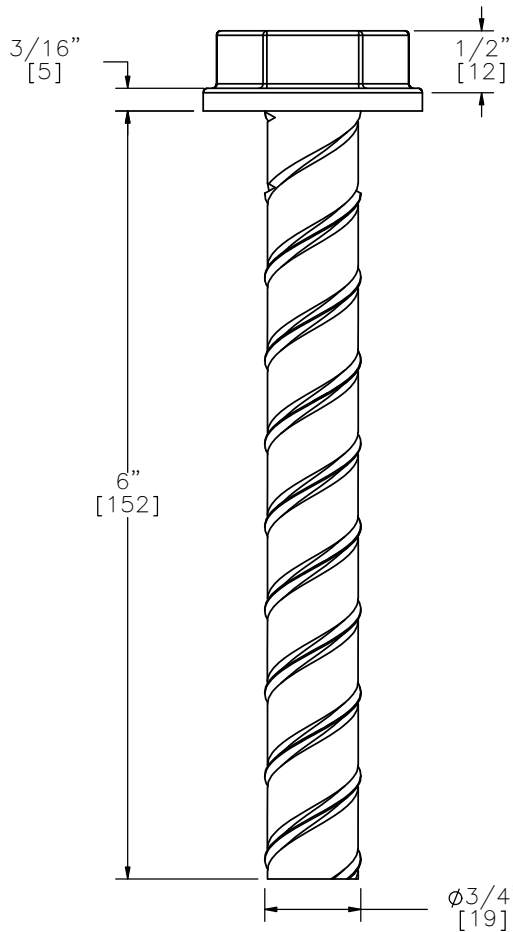
SGR37

SHEET NO.

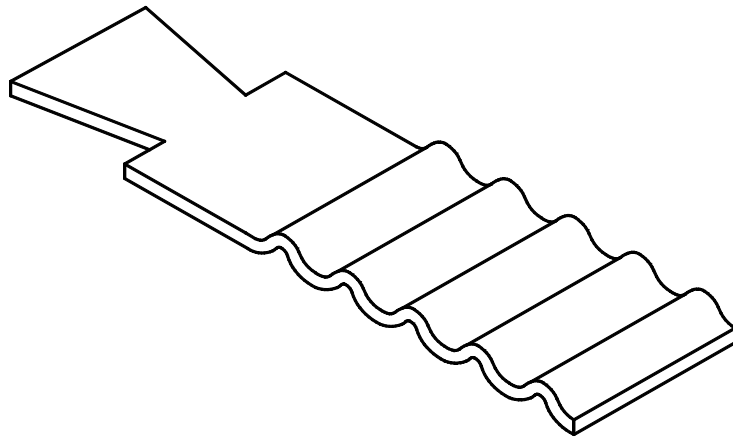
11 of 14

DATE:

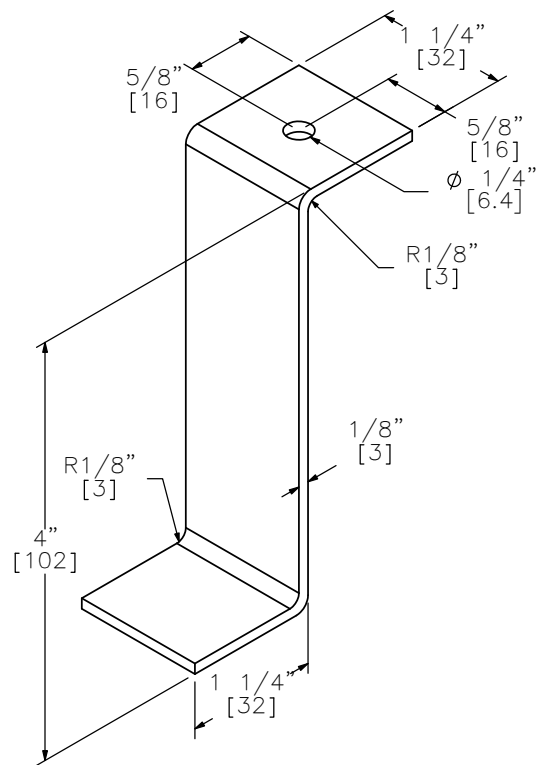
07/29/2011



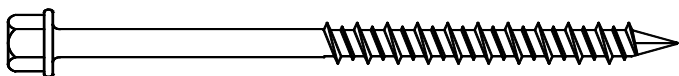
$\phi 3/4$ " [19] x 6" [152] LONG
 WEDGE-BOLT SCREW ANCHOR
 PART a10



HECKMAN TYPE 106 DOVETAIL CORRUGATED ANCHOR
 5 1/2" [140] LONG, 16 GAUGE [1.5]
 PART a6



304 STAINLESS STEEL Z-CLIP
 PART a11



$\phi 1/4$ " [6] x 2-3/4" [70]
 HWH TAPCON
 PART a12

NCHRP 350 TL-2 ROUGH STONE MASONRY GUARDWALL

SGR37

SHEET NO.

DATE:

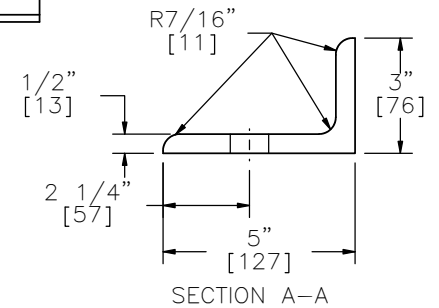
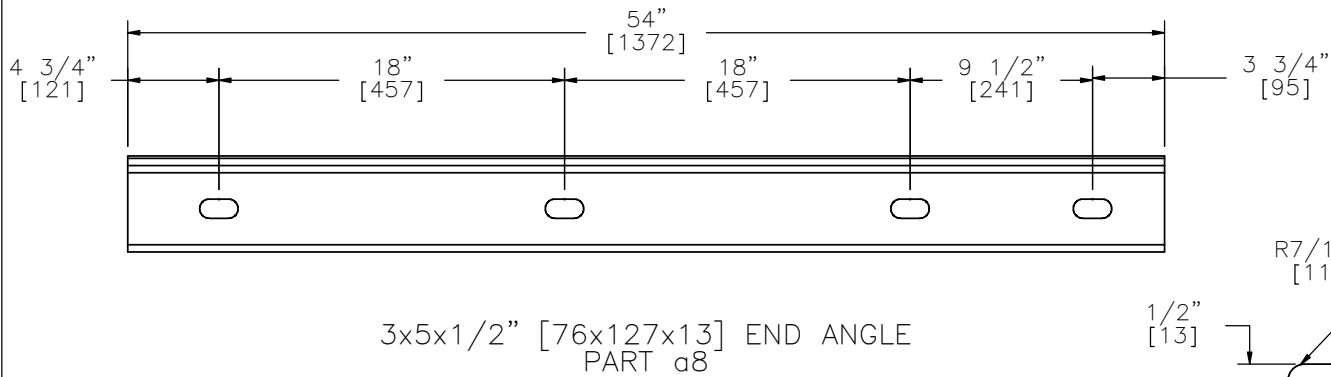
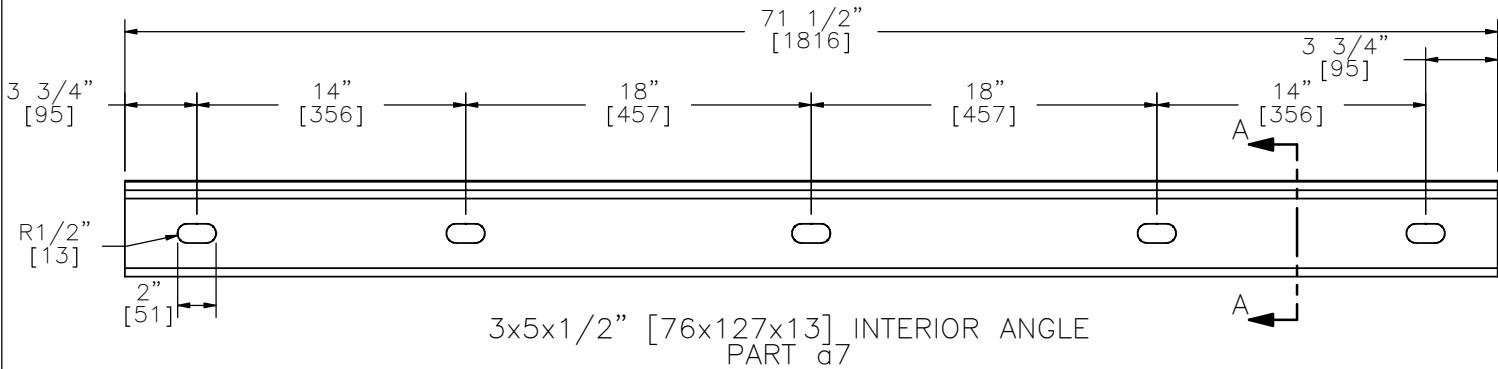
12 of 14

07/29/2011





NCHRP 350 TL-2 ROUGH STONE MASONRY GUARDWALL



- NOTES:
- (1) ANGLES ARE USED TO PROVIDE LATERAL SHEAR RESISTANCE FOR THE RUBBLE STONE MASONRY PLACED ON TOP OF THE INNER CORE WALL.
 - (2) SPACING BETWEEN ALL ANGLES IS APPROXIMATELY 1/2" [13].
 - (3) INTERIOR STEEL ANGLES ARE ATTACHED WITH WEDGE-BOLT SCREW ANCHORS. INTERIOR ANGLES ARE CENTERED BETWEEN STIRRUPS. END ANGLES ON THE INTERIOR ANGLES ARE PLACED BETWEEN STIRRUPS, BUT NOT CENTERED SINCE AN ANCHOR FROM THE ADJACENT ANGLE MUST ALSO BE PLACED WITHIN THE STIRRUP SPAN.

13 of 14

SHEET NO.

SGR37

DATE:

07/29/2011

THIS PAGE INTENTIONALLY LEFT BLANK

NCHRP 350 TL-2 ROUGH STONE MASONRY GUARDWALL

SGR37



SHEET NO.

DATE:

14 of 14

07/29/2011