
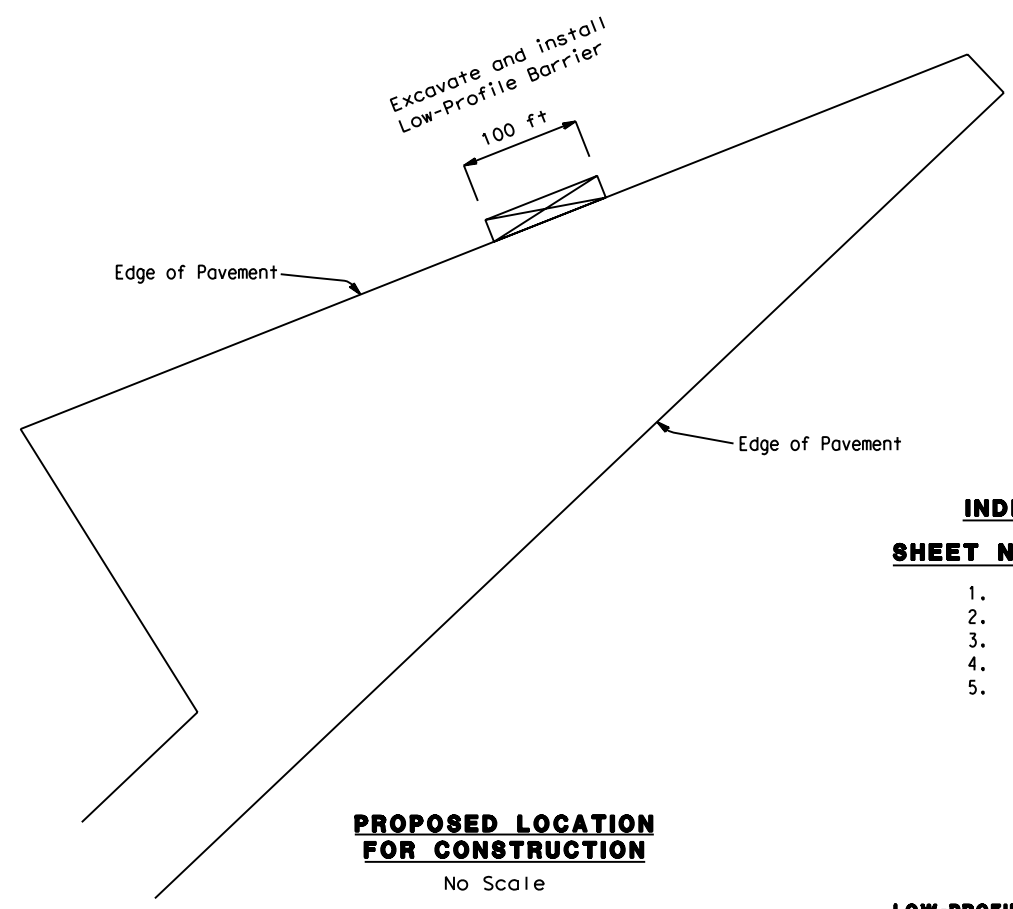
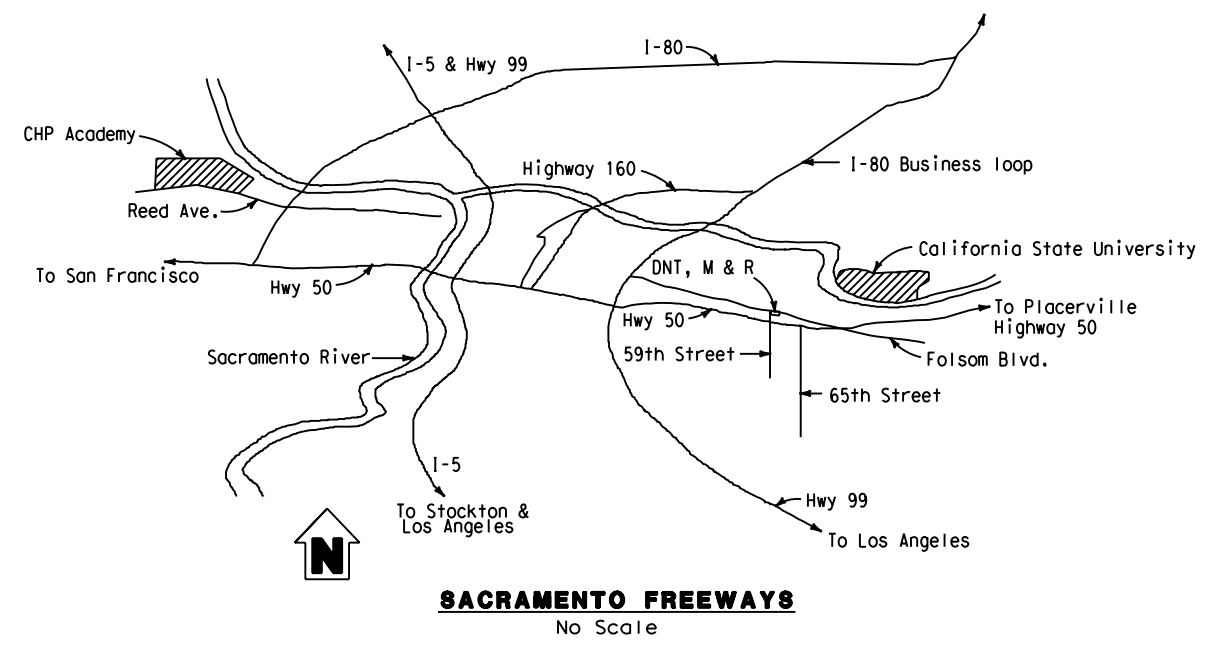


DIST.	COUNTY	ROUTE	POSTMILE TOTAL PROJECT	SHEET NO.	TOTAL SHEETS
				1	5

REGISTERED ENGINEER - CIVIL

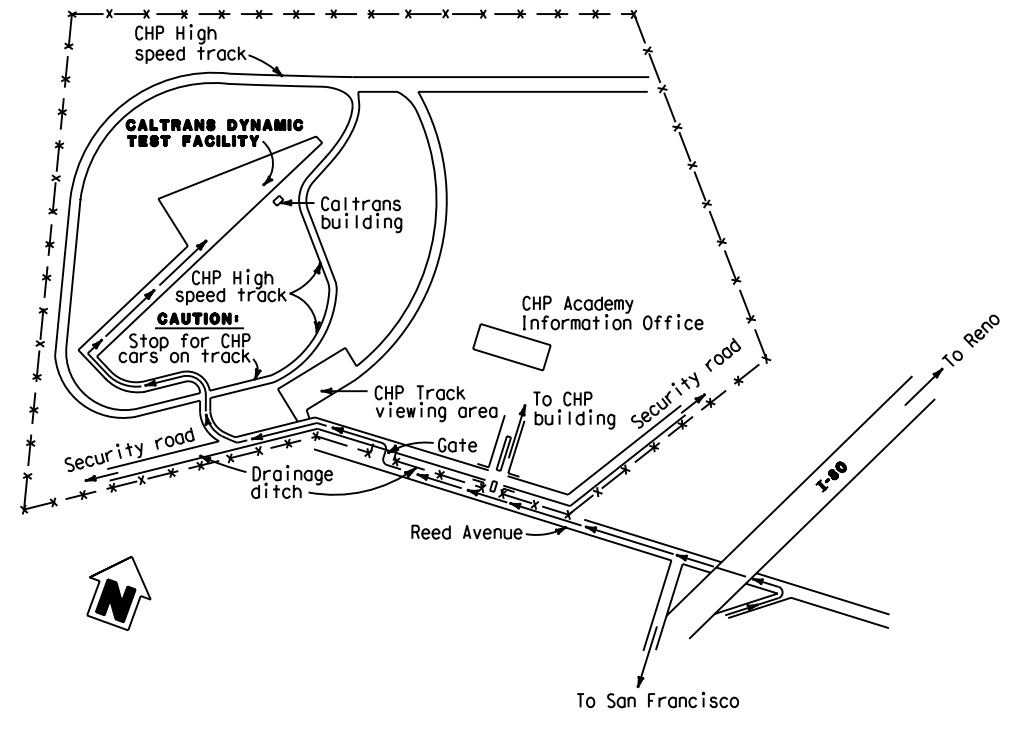
PLANS APPROVAL DATE _____

The State of California or its officers or agents shall not be responsible for the accuracy or completeness of electronic copies of this plan sheet.

INDEX TO PLANS

SHEET NO.	TITLE
1.	Location Map
2.	Low-Profile Barrier Layout
3.	Typical Barrier Post and Cross-Section
4.	Post, Rail, and Anchor Details
5.	Expansion Joint



LOW-PROFILE BARRIER IS TO BE INSTALLED AT THE CALTRANS DYNAMIC TEST FACILITY. THE EXACT LOCATION WILL BE DETERMINED BY THE ENGINEER.

NO SCALE
ALL DIMENSIONS ARE IN INCHES UNLESS OTHERWISE SHOWN

DESIGN	BY	CHECKED	STATE OF CALIFORNIA DEPARTMENT OF TRANSPORTATION	DIVISION OF RESEARCH AND INNOVATION ROADSIDE SAFETY RESEARCH GROUP	BRIDGE NO.	LOW-PROFILE BARRIER LOCATION MAP AND GENERAL PLAN
DETAILS	BY <i>VUE HER</i>	CHECKED			POSTMILE	
QUANTITIES	BY	CHECKED				
				RELATIVE BORDER SCALE IS IN INCHES	0 1 2 3	CU EA
				...Final Details\LPB_1_5.dgn	FILE => \$REQUEST	DISREGARD PRINTS BEARING EARLIER REVISION DATES
				REVISION DATES (PRELIMINARY STAGE ONLY)		SHEET 1 OF 5


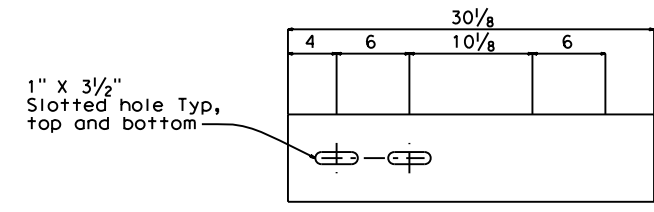
TIME PLOTTED => \$TIME
DATE PLOTTED => \$DATE
USERNAME => \$USER

DIST.	COUNTY	ROUTE	POSTMILE TOTAL PROJECT	SHEET NO.	TOTAL SHEETS
				2	5

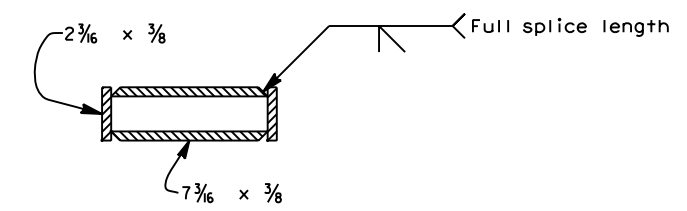
REGISTERED ENGINEER - CIVIL

PLANS APPROVAL DATE _____

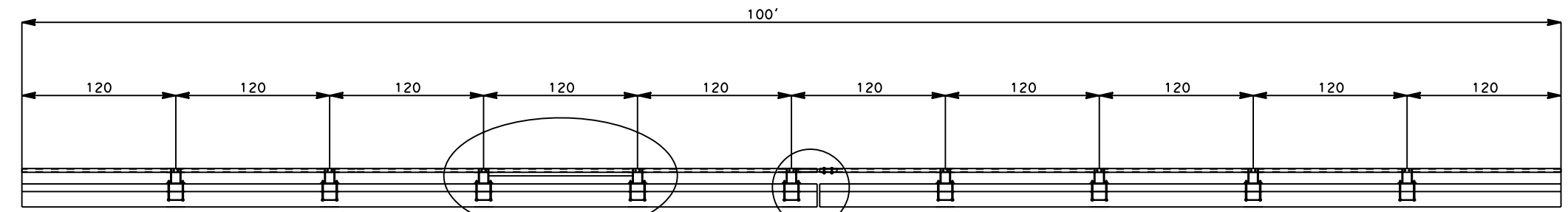
The State of California or its officers or agents shall not be responsible for the accuracy or completeness of electronic copies of this plan sheet.

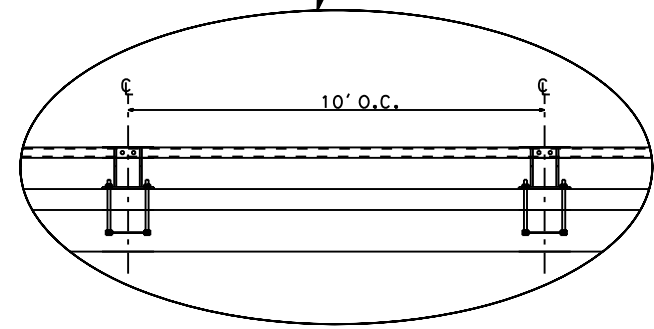
EXPANSION SLEEVE DETAIL (TOP VIEW)



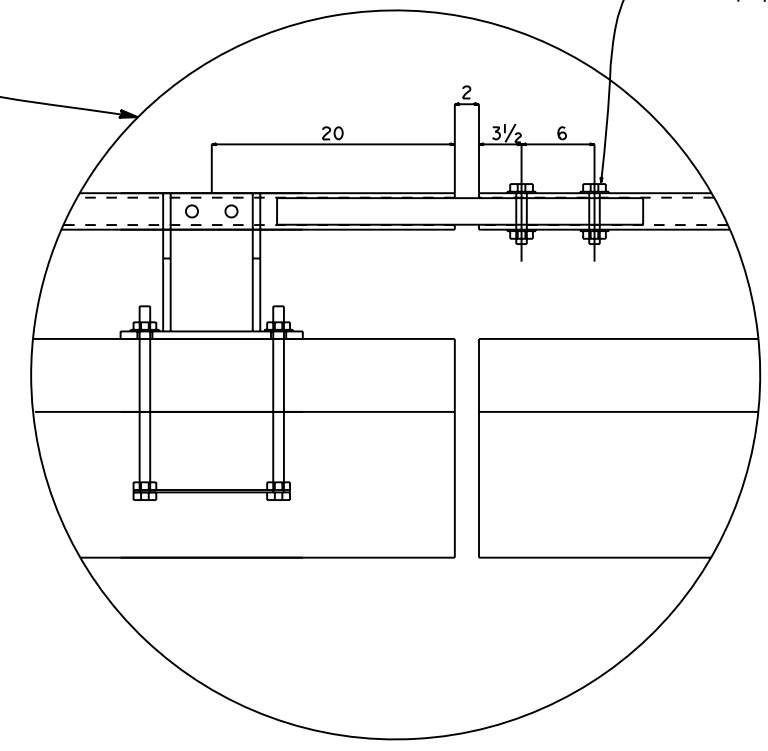
SECTION SLEEVE



LPB ELEVATION



ELEVATION OF RAIL POST SPACING



EXPANSION SPLICE

Use 3/4" x 5/16" HS Bolts with washers, fully tensioned. 1" holes in rail Typ

NO SCALE
ALL DIMENSIONS ARE IN INCHES UNLESS OTHERWISE SHOWN

DESIGN	BY	CHECKED	STATE OF CALIFORNIA DEPARTMENT OF TRANSPORTATION	DIVISION OF RESEARCH AND INNOVATION ROADSIDE SAFETY RESEARCH GROUP	BRIDGE NO.	LOW-PROFILE BARRIER LOCATION MAP AND GENERAL PLAN
DETAILS	BY <i>VUE HER</i>	CHECKED			POSTMILE	
QUANTITIES	BY	CHECKED				
				RELATIVE BORDER SCALE IS IN INCHES	0 1 2 3	CU EA
				...Final Details\LPB_2.5.dgn	FILE => \$REQUEST	DISREGARD PRINTS BEARING EARLIER REVISION DATES
						REVISION DATES (PRELIMINARY STAGE ONLY)
						01/07/09
						SHEET 2 OF 5

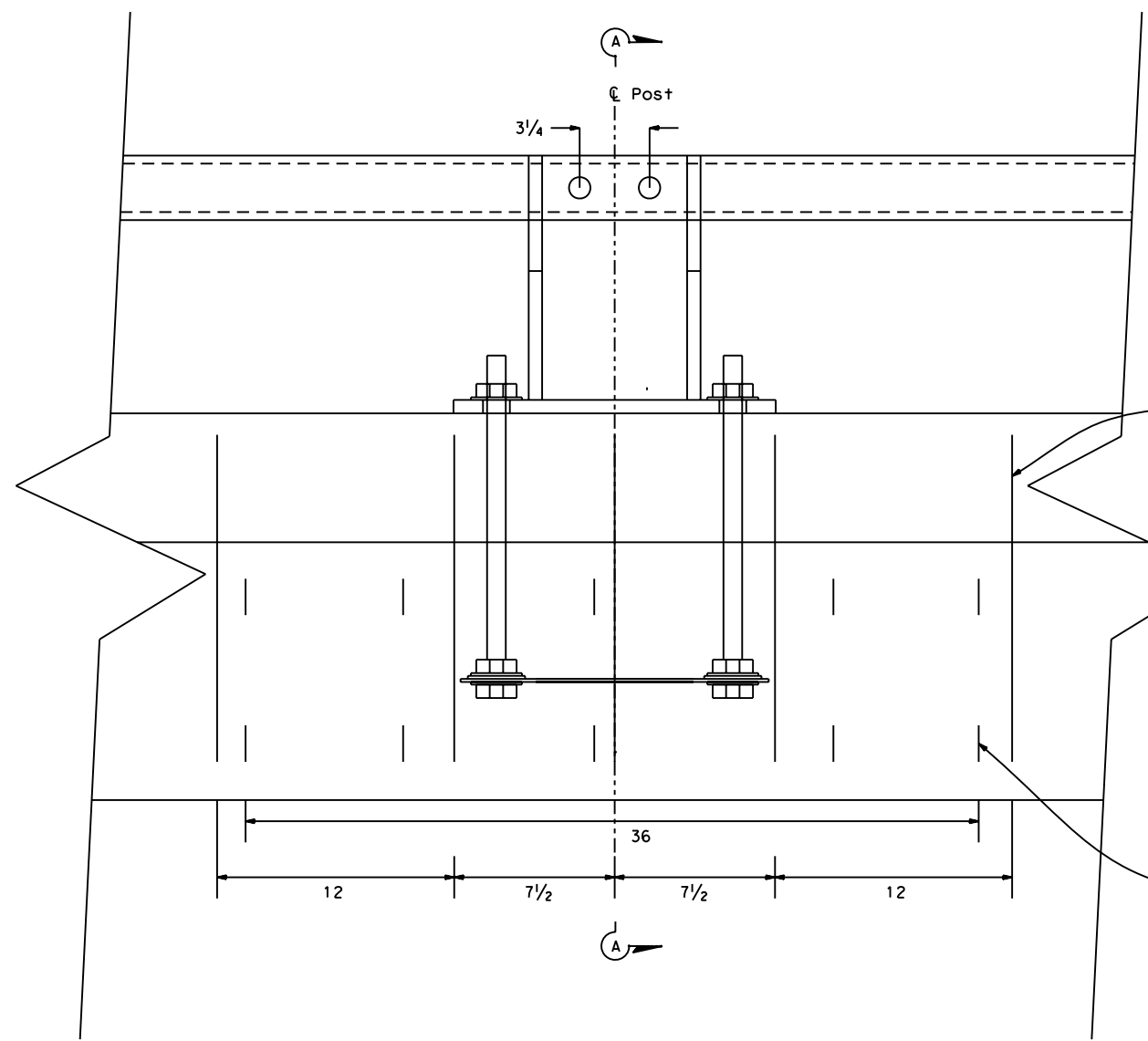
TIME PLOTTED => \$TIME
DATE PLOTTED => \$DATE
USERNAME => \$USER

DIST.	COUNTY	ROUTE	POSTMILE TOTAL PROJECT	SHEET NO.	TOTAL SHEETS
				3	5

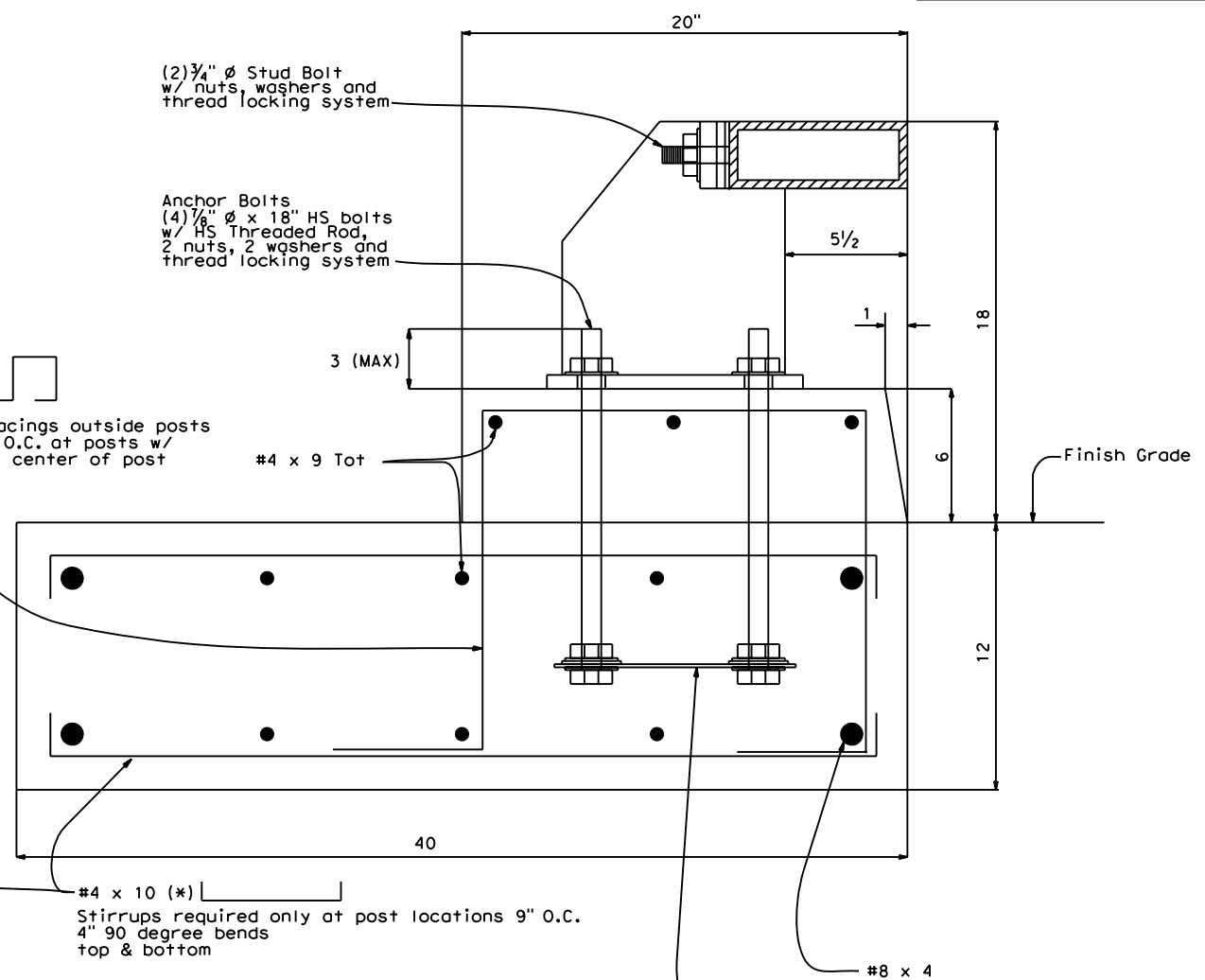
REGISTERED ENGINEER - CIVIL

PLANS APPROVAL DATE

The State of California or its officers or agents shall not be responsible for the accuracy or completeness of electronic copies of this plan sheet.



TYPICAL BARRIER POST



SECTION A-A

MATERIAL:

- A. All structural steel shall be A36, structural tubing shall be A500 Grade B except as noted.
- B. All bolts shall be high strength conforming to ASTM A325.
- C. Stud bolts shall be ASTM A108 and torque to 100 ft-lbs.
- D. Minor Concrete

(*) Surface cover 2"

See ANCHOR DETAIL (SHEET 3)

NO SCALE
ALL DIMENSIONS ARE IN INCHES UNLESS OTHERWISE SHOWN

DESIGN	BY	CHECKED	STATE OF CALIFORNIA DEPARTMENT OF TRANSPORTATION	DIVISION OF RESEARCH AND INNOVATION ROADSIDE SAFETY RESEARCH GROUP	BRIDGE NO.	LOW-PROFILE BARRIER LOCATION MAP AND GENERAL PLAN
DETAILS	BY <i>VUE HER</i>	CHECKED			POSTMILE	
QUANTITIES	BY	CHECKED				
				RELATIVE BORDER SCALE IS IN INCHES	0 1 2 3	CU EA
				...Final Details\LPB_3_5.dgn	FILE => \$REQUEST	DISREGARD PRINTS BEARING EARLIER REVISION DATES
				REVISION DATES (PRELIMINARY STAGE ONLY)		SHEET 3 OF 5


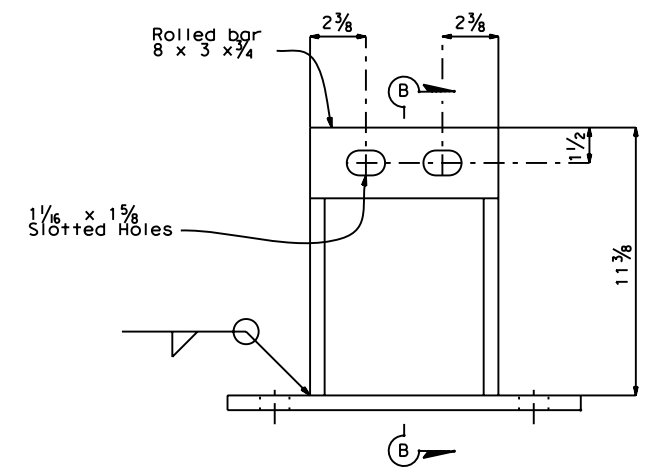
DATE PLOTTED => \$DATE USERNAME => \$USER TIME PLOTTED => \$TIME

DIST.	COUNTY	ROUTE	POSTMILE TOTAL PROJECT	SHEET NO.	TOTAL SHEETS
				4	5

REGISTERED ENGINEER - CIVIL

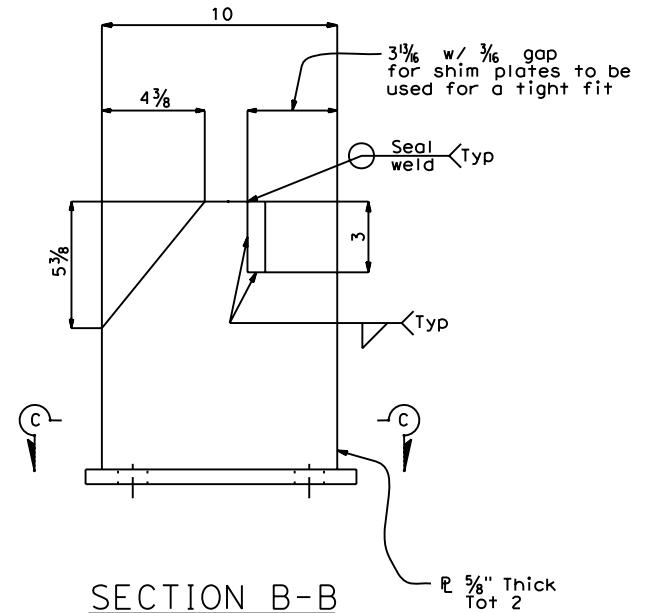
PLANS APPROVAL DATE

The State of California or its officers or agents shall not be responsible for the accuracy or completeness of electronic copies of this plan sheet.

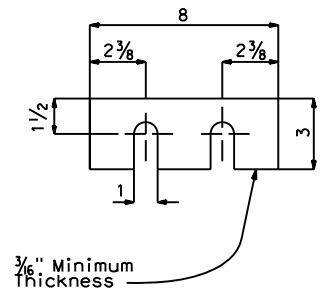



ELEVATION

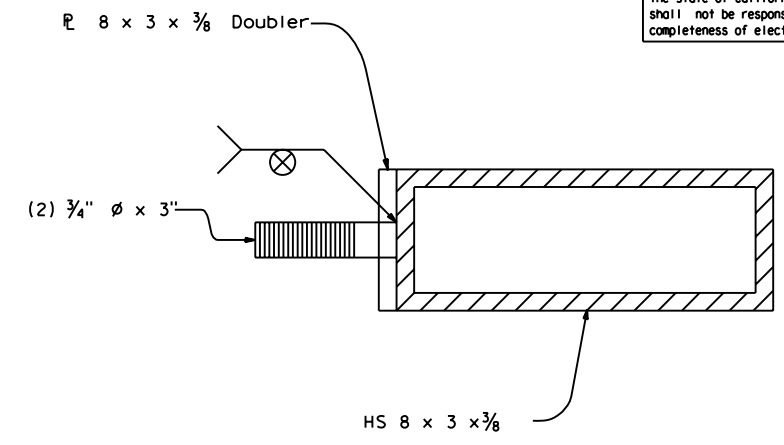
Full splice length



SECTION B-B

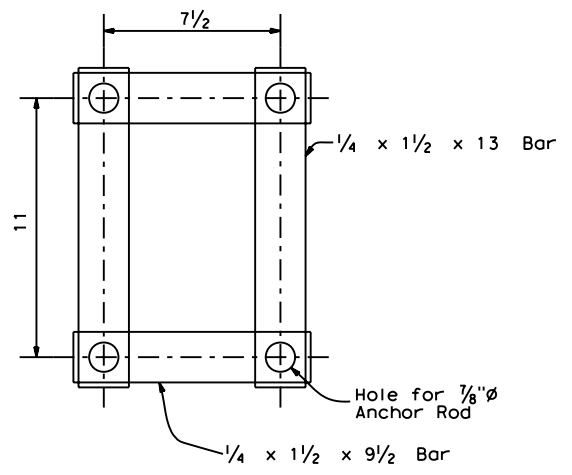


SHIMS

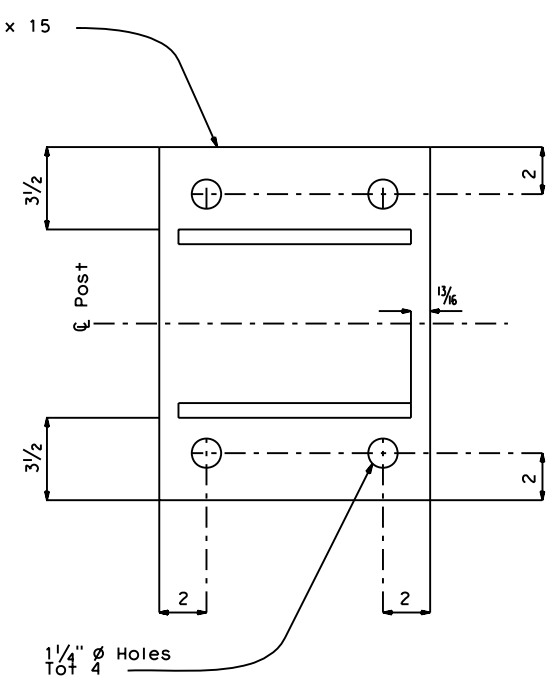


RAIL SECTION AT POST

STUD BOLT DETAIL



ANCHORAGE DETAIL



SECTION C-C

POST DETAIL

GENERAL NOTES:

1. Rails shall be galvanized after fabrication.
2. Anchor bolts may be tack welded (shop or field) to anchorage.
3. All rough edges on posts and rails shall be ground smooth.
4. Each rail length shall be continuous over a minimum of two posts.
5. The contractor shall check that the tubular sleeves splices conform to the dimensions indicated to assure proper clearance.

NO SCALE
ALL DIMENSIONS ARE IN INCHES UNLESS OTHERWISE SHOWN

DESIGN	BY	CHECKED	STATE OF CALIFORNIA DEPARTMENT OF TRANSPORTATION	DIVISION OF RESEARCH AND INNOVATION ROADSIDE SAFETY RESEARCH GROUP	BRIDGE NO.	LOW-PROFILE BARRIER LOCATION MAP AND GENERAL PLAN
DETAILS	BY <i>VUE HER</i>	CHECKED			POSTMILE	
QUANTITIES	BY	CHECKED				

RELATIVE BORDER SCALE IS IN INCHES

0 1 2 3

CU EA

DISREGARD PRINTS BEARING EARLIER REVISION DATES

REVISION DATES (PRELIMINARY STAGE ONLY)

0/01/09																			
---------	--	--	--	--	--	--	--	--	--	--	--	--	--	--	--	--	--	--	--

SHEET 4 OF 8

FILE => \$REQUEST

...Final Details\LPB_4_5.dgn


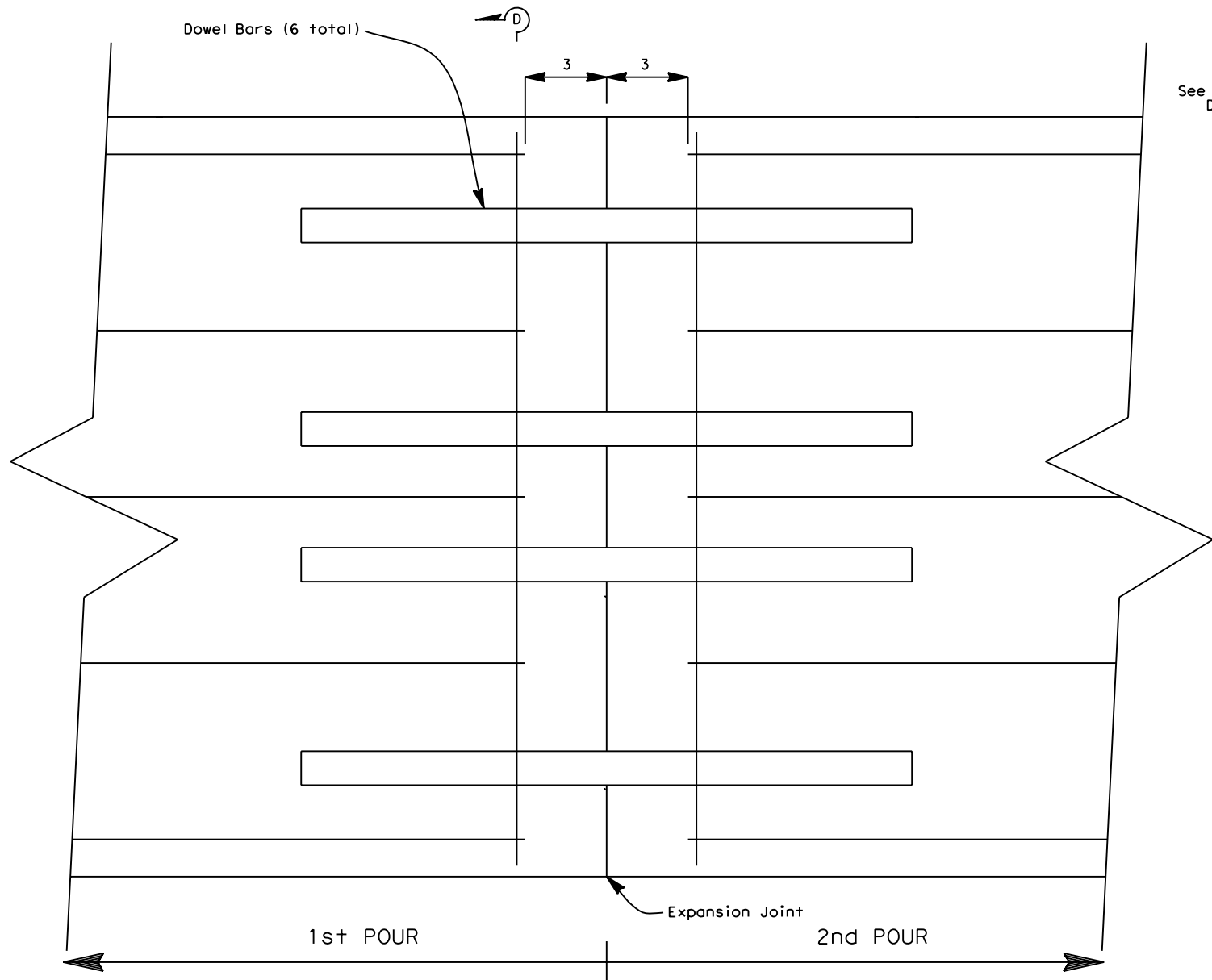
USERNAME => \$USER DATE PLOTTED => \$DATE TIME PLOTTED => \$TIME

DIST.	COUNTY	ROUTE	POSTMILE TOTAL PROJECT	SHEET NO.	TOTAL SHEETS
				5	5

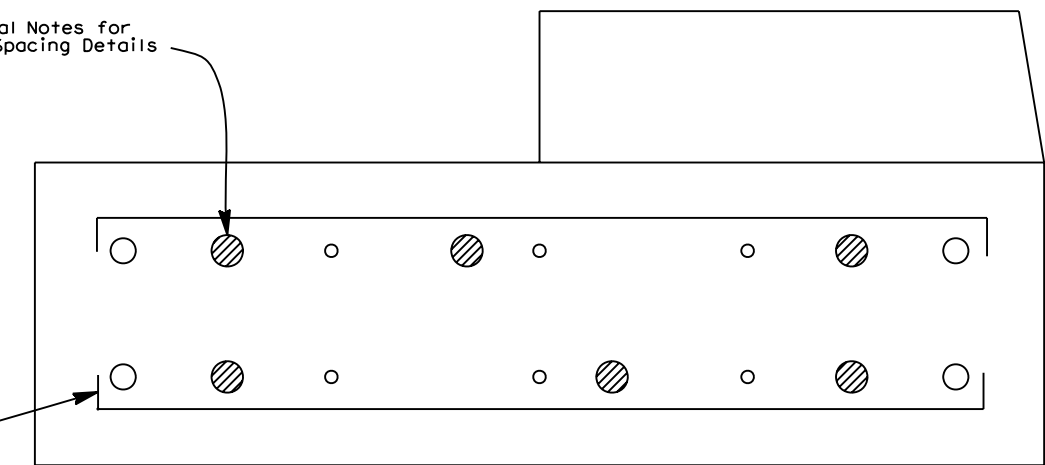
REGISTERED ENGINEER - CIVIL

PLANS APPROVAL DATE

The State of California or its officers or agents shall not be responsible for the accuracy or completeness of electronic copies of this plan sheet.

See General Notes for Dowel Spacing Details



SECTION D-D

#4*
See NOTE A

GENERAL NOTES:

1. Use 6 - 18" x 1/4" ϕ dowel bars (A36).
2. Dowel bars are epoxy coated.
3. Terminate rebar with 3" cover at joint faces.
4. Use bond breaker coated on one side of bar only at expansion side, coinciding w/ free end of rail joint.
5. Place dowel bars so that there's a minimum of 2" clearance from rebar in cross-section.

NOTE A

4" 90 degree bends
4 Total @ each expansion joint
top and bottom

EXPANSION JOINT (TOP VIEW)

NO SCALE
ALL DIMENSIONS ARE IN INCHES UNLESS OTHERWISE SHOWN

DESIGN	BY	CHECKED	STATE OF CALIFORNIA DEPARTMENT OF TRANSPORTATION	DIVISION OF RESEARCH AND INNOVATION ROADSIDE SAFETY RESEARCH GROUP	BRIDGE NO.	LOW-PROFILE BARRIER LOCATION MAP AND GENERAL PLAN
DETAILS	BY <i>VUE HER</i>	CHECKED			POSTMILE	
QUANTITIES	BY	CHECKED				
				RELATIVE BORDER SCALE IS IN INCHES	0 1 2 3	CU EA
				...Final Details\LPB_5_5.dgn	FILE => \$REQUEST	DISREGARD PRINTS BEARING EARLIER REVISION DATES
				REVISION DATES (PRELIMINARY STAGE ONLY)		0/01/09
						SHEET 5 OF 5

DATE PLOTTED => \$DATE USERNAME => \$USER TIME PLOTTED => \$TIME