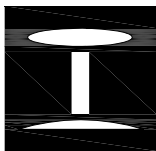


DETAIL A: CROSS SECTION

2015

FRANKLIN EZE-ERECT SIGN SUPPORT SYSTEM



Franklin Industries Co
 Franklin, PA
 (814) 437-3726
 FAX: (814) 432-7556
 www.franklinindustriesco.com

SSP08a-b
 SHT 1 OF 3
 REVISION 4/18/2015

INTENDED USE

The Franklin Industries Eze-Erect system can be used as a single (SSP08a) in strong and weak soil or dual (SSP08b) post sign support installations in strong soil only. The system may be driven into strong and weak soil and does not require a concrete foundation. These systems have been successfully crash tested in strong and weak soils and have been judged to satisfy the requirements of 1985 AASHTO Standard Specifications for Structural Support for Highway Signs, Luminaires and Traffic Signals and the National Cooperative Highway Research Program Report 230.

COMPONENTS

The Franklin Industries Eze-Erect system consists of three (3) components: a base post (PFP33-36) a sign post (PFP33-36) and the Eze-Erect splice hardware. The Eze-Erect splice hardware consists of a retainer-spacer strap, four 5/16 [8]x 2 [50] bolts, washers and nuts. The external toothed lockwashers are .375 [10] d style, and heavy duty. The nut, bolt and lockwasher hardware is cadmium plated in accordance with the requirements of ASTM A165-80, Type OS, except using clear chromate. The retainer-spacer strap finish shall be galvanized conforming to ASTM A123.

REFERENCES

L.A. Staron "Breakaway Sign Supports" Geometric and Roadside Design Acceptance Letter SS-9, Federal Highway Administration, Washington D.C., March 16, 1989

L.A. Staron "Breakaway Sign Supports" Geometric and Roadside Design Acceptance Letter SS-9B, Federal Highway Administration, Washington D.C., October 17, 1996.

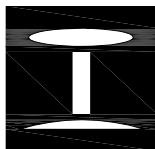
CONTACT INFORMATION

Franklin Industries Co
P.O. Box 671
Franklin, PA 16323
(814) 437-3726
FAX: (814) 432-7556

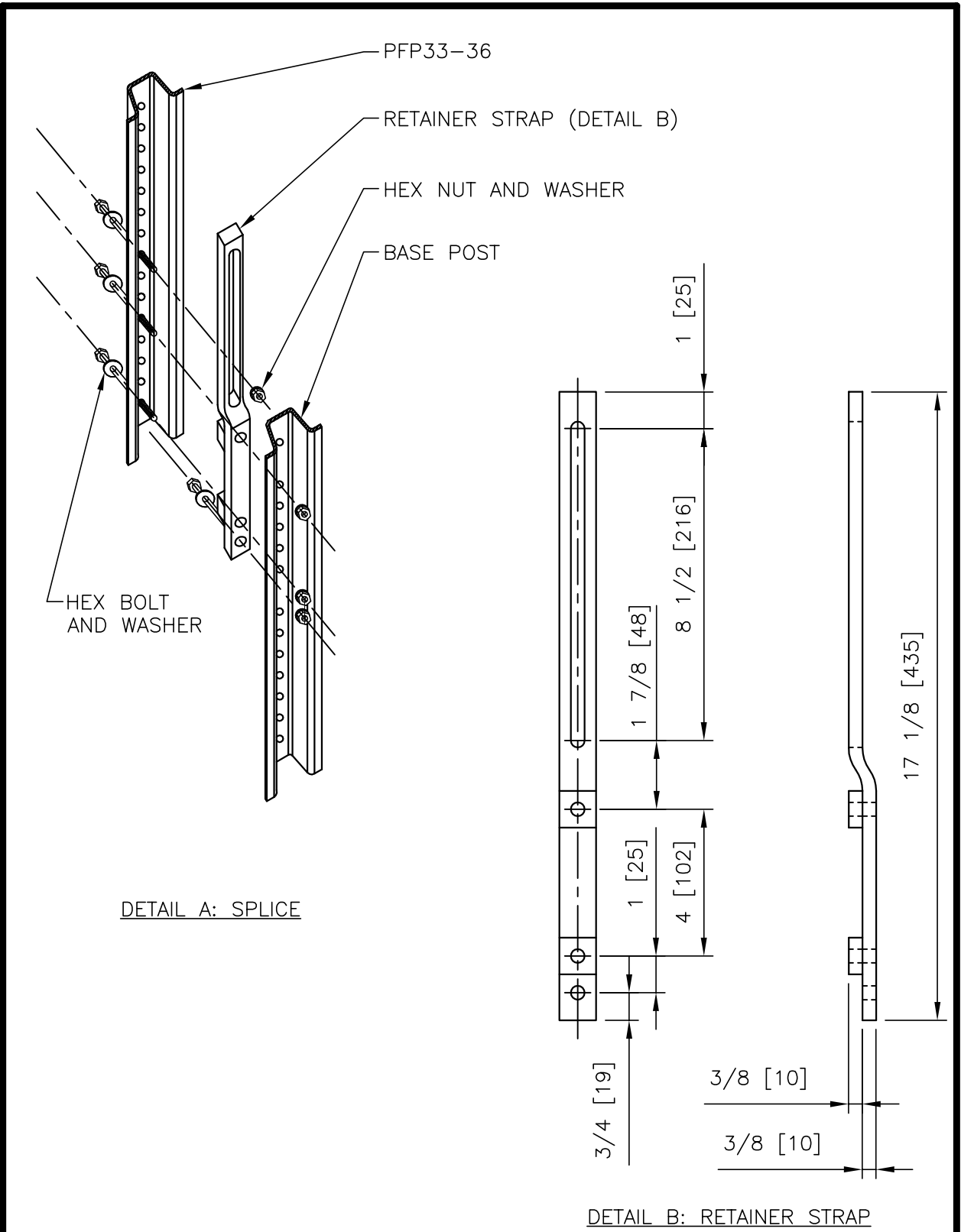
2015

FRANKLIN EZE-ERECT SIGN SUPPORT SYSTEM

SSP08a-b
SHT 2 OF 3
REVISION 4/18/2015

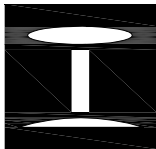


Franklin Industries Co
Franklin, PA
(814) 437-3726
FAX: (814) 432-7556
www.franklinindustriesco.com



2015

FRANKLIN EZE-ERECT SIGN SUPPORT SYSTEM



Franklin Industries Co
 Franklin, PA
 (814) 437-3726
 FAX: (814) 432-7556
 www.franklinindustriesco.com

SSP08a-b
 SHT 3 OF 3
 REVISION 4/18/2015