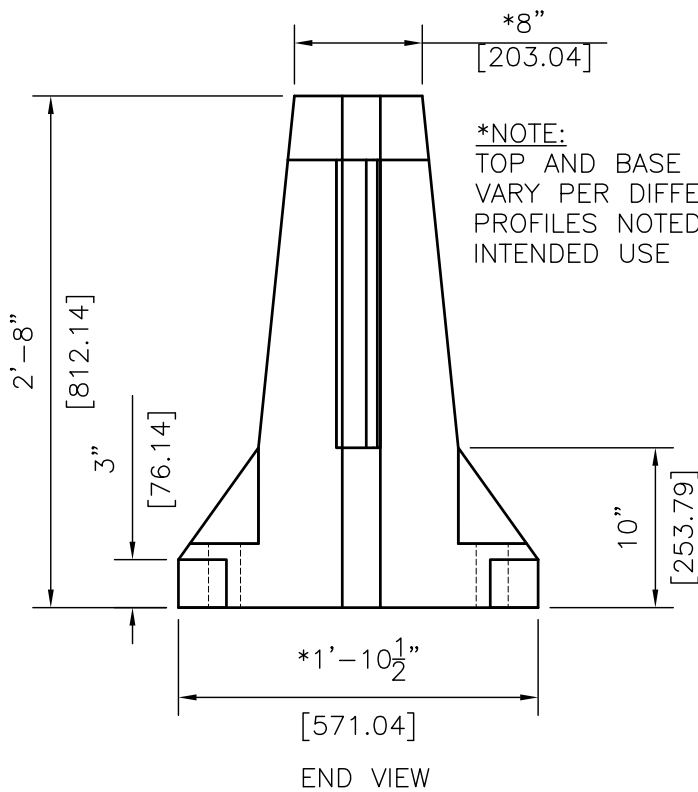


ISOMETRIC VIEW

12'
[3657.67]



*NOTE:
TOP AND BASE DIMENSIONS
VARY PER DIFFERENT
PROFILES NOTED UNDER
INTENDED USE

12' BARRIER SECTION

J-J HOOKS BOLT/PIN-DOWN CONCRETE BARRIER

EASI SET **EASI-SET® WORLDWIDE**
 5119 Catlett Rd. • Midland, VA 22728 • info@EasiSet.com
 www.EasiSet.com • 800-547-4045 • Fax 540-439-2541

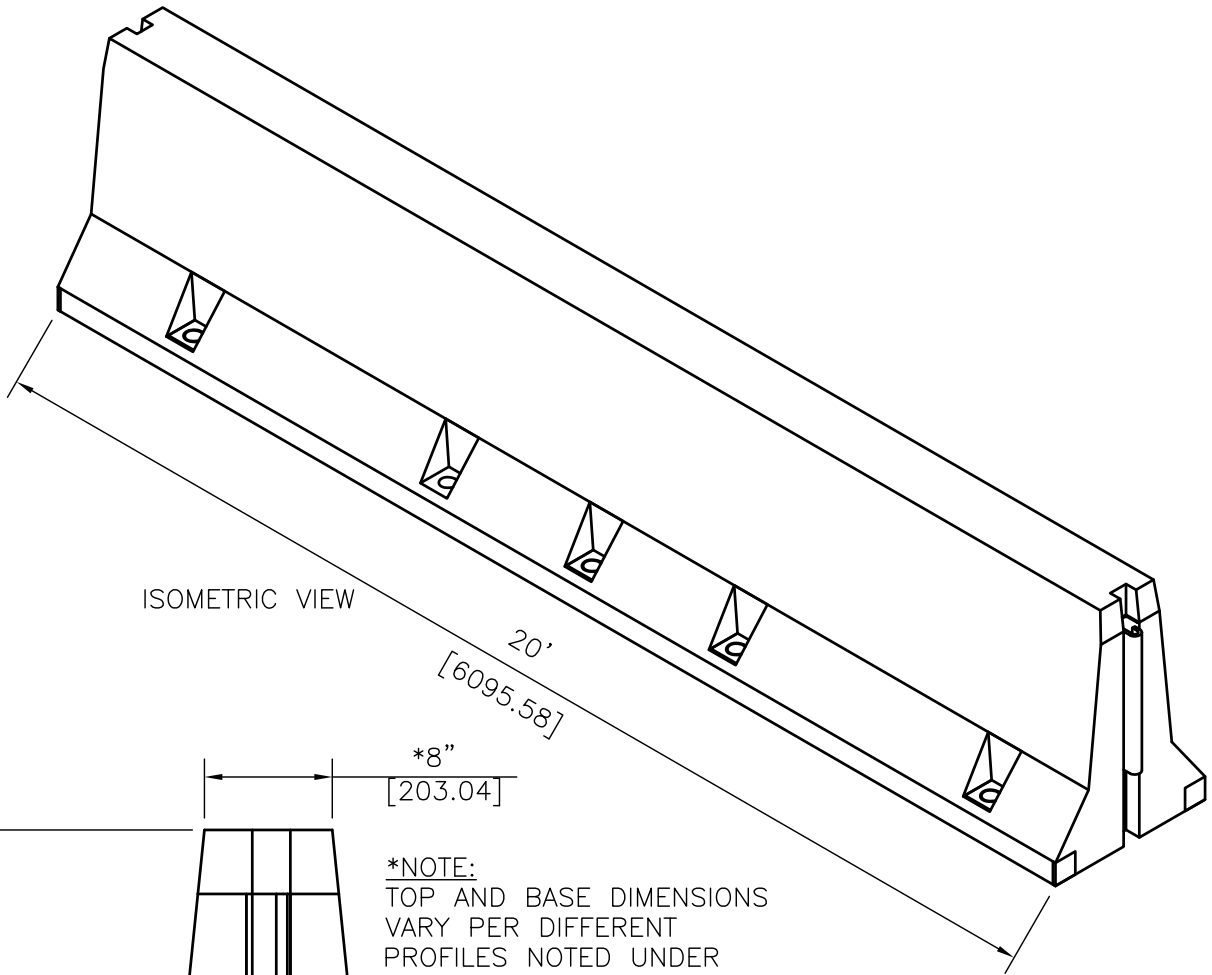
SWC02

SHEET NO.

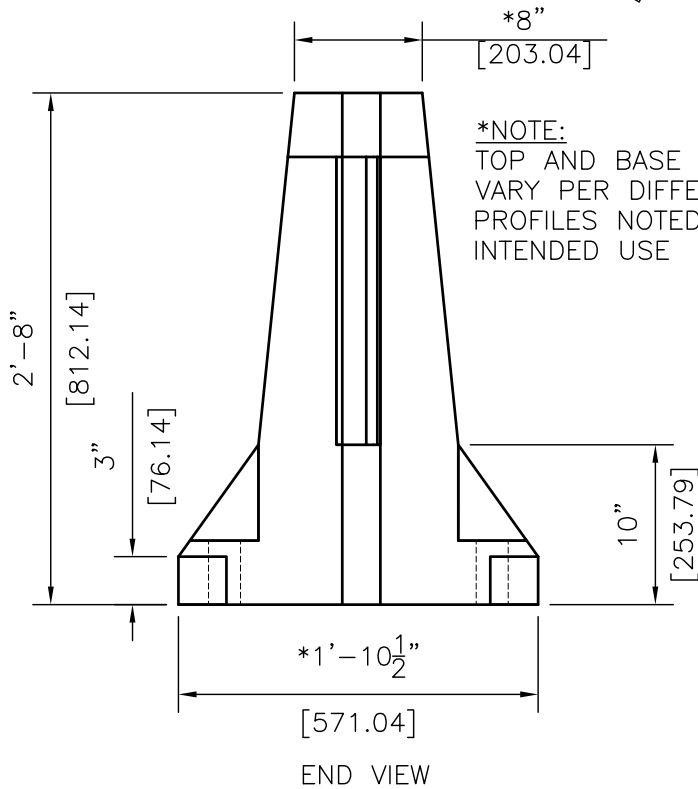
DATE:

1 of 4

10/18/13



ISOMETRIC VIEW



20' BARRIER SECTION

J-J HOOKS BOLT/PIN-DOWN CONCRETE BARRIER

EASI SET **EASI-SET® WORLDWIDE**
 5119 Catlett Rd. • Midland, VA 22728 • info@EasiSet.com
 www.EasiSet.com • 800-547-4045 • Fax 540-439-2541

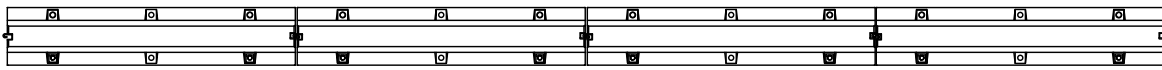
SWC02

SHEET NO.

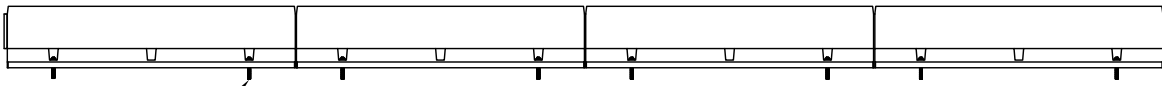
DATE:

2 of 4

10/18/13

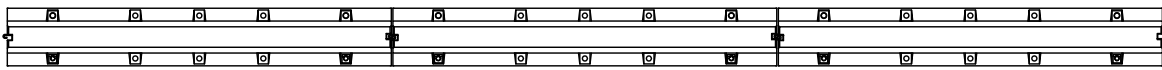


PLAN VIEW-12' BOLT-DOWN BARRIER

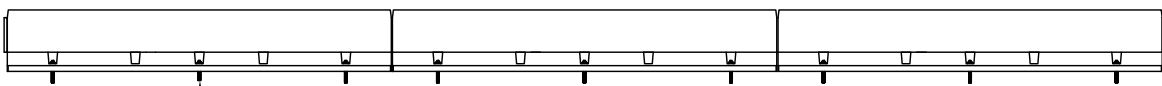


(2) BOLTS PER SECTION (TYP)

ELEVATION VIEW-12' BOLT-DOWN BARRIER



PLAN VIEW-20' BOLT-DOWN BARRIER

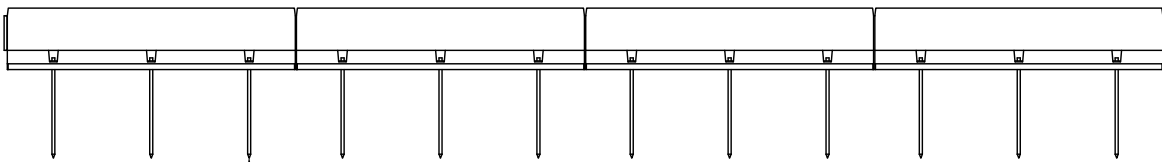


(3) BOLTS PER SECTION (TYP)

ELEVATION VIEW-20' BOLT-DOWN BARRIER

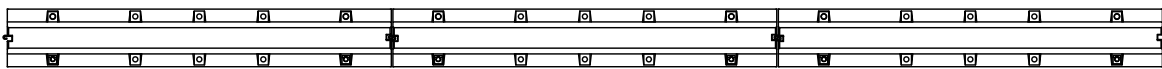


PLAN VIEW-12' PIN-DOWN BARRIER

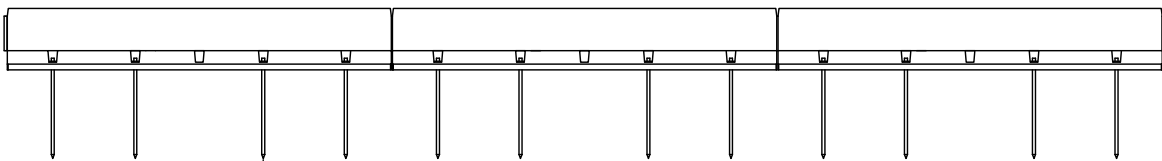


(3) PINS PER SECTION (TYP)

ELEVATION VIEW-12' PIN-DOWN BARRIER



PLAN VIEW-20' PIN-DOWN BARRIER



(4) PINS PER SECTION (TYP)

ELEVATION VIEW-20' PIN-DOWN BARRIER

J-J HOOKS BOLT/PIN-DOWN CONCRETE BARRIER

EASI SET **EASI-SET® WORLDWIDE**

5119 Catlett Rd. • Midland, VA 22728 • info@EasiSet.com
 www.EasiSet.com • 800-547-4045 • Fax 540-439-2541

SWC02

SHEET NO.

DATE:

3 of 4

10/18/13

SPECIFICATIONS

INTENDED USE

The J-J Hooks bolt-down and pin-down concrete safety barriers can be utilized for bridge applications and roadway (asphalt) applications. The system is available in New Jersey, F & KI Shapes, Constant Slope, and other profiles. The Bolt/Pin-down design connects directly with the J-J Hook free-standing design and can connect to other barrier systems through the use of a transition section. The maximum dynamic deflection of the bolt-down system is 5.9 in. [150] with a working width of 27.5 in. [699]. The maximum dynamic deflection of the pin-down system is 8.76 in. [223] with a working width of 32.03 in. [814]. J-J Hooks bolt-down and pin-down proprietary barrier systems have been crash tested under TL-3 conditions and met all requirements for MASH test designation 3-11.

Component	Number
12' & 20' Bolt-down/Pin-down concrete barrier	-
Drive Pins	(3)-12' section, (4)-20' section
Tab washer & Structural washer	(2)-12' section, (3)-20' section
1" Dia. Hilti reusable bolt	(2)-12' section, (3)-20' section
1" Dia. Hilti threaded insert	(2)-12' section, (3)-20' section

ACCEPTANCE

Bolt-Down: FHWA acceptance letter B-52B, December 20, 2012.
Pin-Down: FHWA acceptance letter B-52C, December 20, 2012.

J-J HOOKS BOLT-DOWN/PIN-DOWN CONCRETE BARRIER

SWC02



EASI-SET® WORLDWIDE

SHEET NO.

DATE

4 of 4

10/18/13

5119 Catlett Rd. • Midland, VA 22728 • info@EasiSet.com
www.EasiSet.com • 800-547-4045 • Fax 540-439-2541