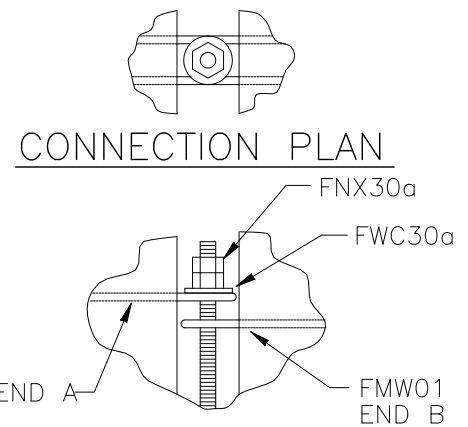
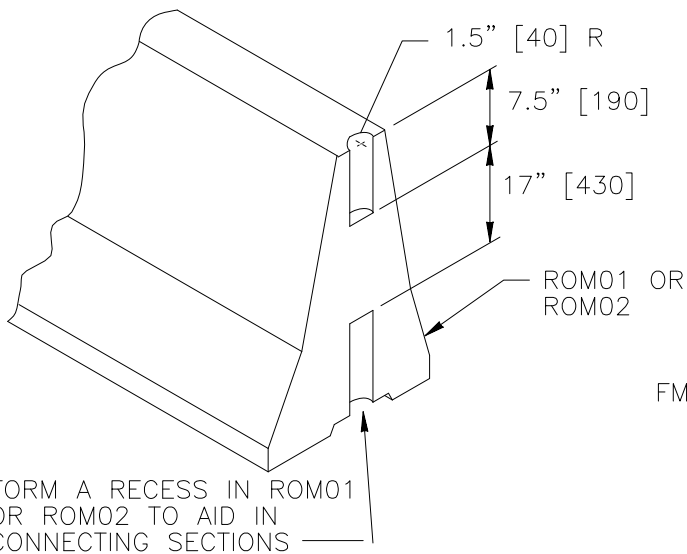


ELEVATION



DETAIL A: CONNECTION

1994

PIN & REBAR PORTABLE CONCRETE BARRIER



SWC04

SHEET NO.	DATE
1 of 2	10/31/2013

## INTENDED USE

SWC04 is pin-and-loop portable concrete barrier that is used as a work zone barrier to separate traffic and workers. Several variations of this system that include F-Shape, NJ-Shape and Single Slope have been crash-tested, and are accepted in accordance with NCHRP Report 350, Test Level 3 (TL-3).

## APPROVALS

Federal Highway Administration (FHWA) Acceptance Letter B-41, October 10, 1997.  
Federal Highway Administration (FHWA) Acceptance Letter B-70, July 17, 2000.  
Federal Highway Administration (FHWA) Acceptance Letter B-84, January 24, 2002.  
Federal Highway Administration (FHWA) Acceptance Letter B-86, August 17, 2001.  
Federal Highway Administration (FHWA) Acceptance Letter B-90, August 24, 2001.  
Federal Highway Administration (FHWA) Acceptance Letter B-93, January 8, 2002.  
Federal Highway Administration (FHWA) Acceptance Letter B-98, May 10, 2002.

## CONTACT INFORMATION

Federal Highway Administration  
Office of Safety Technologies  
1200 New Jersey Avenue, SE  
Washington, DC 20590  
<http://safety.fhwa.dot.gov>

## PIN & LOOP PORTABLE CONCRETE BARRIER

**SWC04**

SHEET NO.

DATE

2 of 2

10/31/2013

