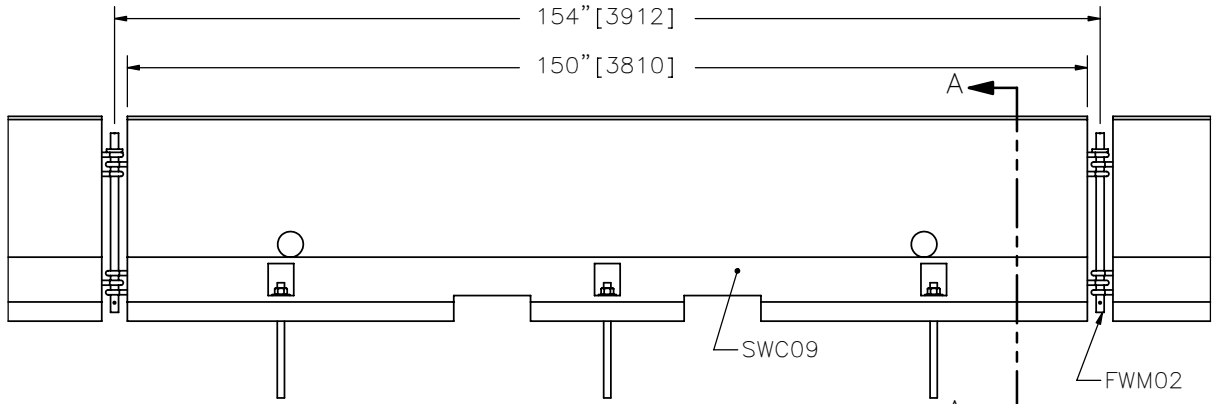
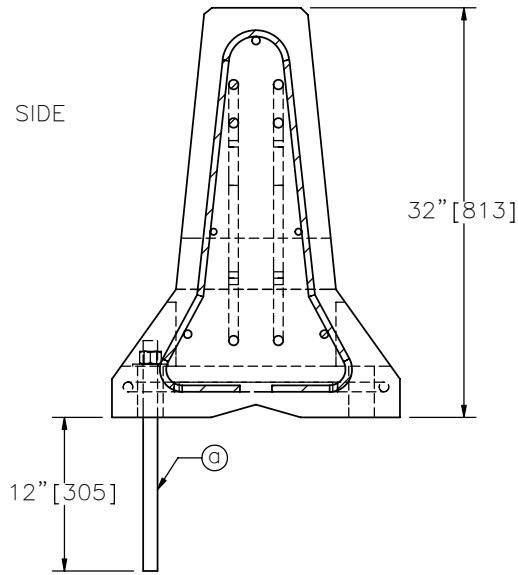


PLAN

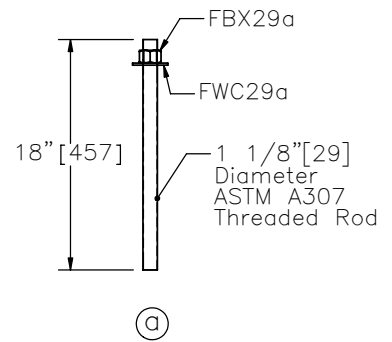


ELEVATION

TRAFFIC SIDE



SECTION A-A



BOLTED-DOWN TEMPORARY F-SHAPE CONCRETE BARRIER



SWC11

SHEET NO.

DATE:

1 of 2

8/31/2007

INTENDED USE

Bolted-Down Temporary F-Shape Concrete Barrier is used as a work-zone barrier to protect traffic and workers. Bolted-Down Temporary F-Shape Concrete Barrier should be used in locations where a maximum dynamic deflection of 11 1/4" [287] or less is acceptable and where a working width of 21" [534] is provided. The system should be placed with a minimum distance of 1" [25] between the back face of the concrete barrier and the edge of the bridge deck. Bolted-Down Temporary F-Shape Concrete Barrier should not be used on a bridge deck with an asphalt overlay. The Bolted-Down System is intended for use with the tested F-shape Temporary Barrier (SWC09) and either the Temporary Barrier Connector Pin with or without the retainer bolt (FWM02 or FWM03). The Bolted-Down Temporary F-Shape Concrete Barrier is TL-3 NCHRP 350 accepted.

COMPONENTS

Unit Length = 154" [3912]

DESIGNATOR	COMPONENT	SYSTEM	NUMBER
FBX29a	Hex nut		3
FWC29a	Flat washer		3
FMW02	Temporary Barrier Connector Pin		1
FMW03	Temporary Barrier Connector Pin		1
SWC09	Temporary Barrier		1
-----	Threaded rod		3

ACCEPTANCE

FHWA Acceptance Letter B-122, October 2, 2003.

REFERENCES

Polivka, K.A., Faller, R.K., Rohde, J.R., Holloway, J.C., Bielenberg, B.W., and Sicking, D.L., *Development and Evaluation of a Tie-Down System for the Redesigned F-Shape Concrete Temporary Barrier*, Final Report to the Midwest State's Regional Pooled Fund Program, Transportation Research Report No. TRP-03-134-03, Project No. SPR-3(017)- Year 13, Project Code: RPPF-03-06, Midwest Roadside Safety Facility, University of Nebraska-Lincoln, August 22, 2003.

Bielenberg, R.W., Faller, R.K., Sicking, D.L., Rohde, J.R., and Reid, J.D., *Tie-Downs and Transitions for Temporary Concrete Barriers*, Paper No. 06-1276, Accepted for Publication at the Annual Meeting of the Transportation Research Board, TRB AFB20 Committee on Roadside Safety Design, Transportation Research Board, Washington D.C., January 2006.

CONTACT INFORMATION

Midwest Roadside Safety Facility
 E527 Nebraska Hall
 Lincoln, NE 68588-0529
 (402) 472-0965
 Email: mwrfsf@unl.edu
 Website: <http://mwrfsf.unl.edu/>



BOLTED-DOWN TEMPORARY F-SHAPE CONCRETE BARRIER

KTB01



SHEET NO.

DATE:

2 of 2

7/26/2007