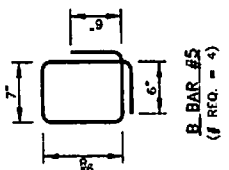
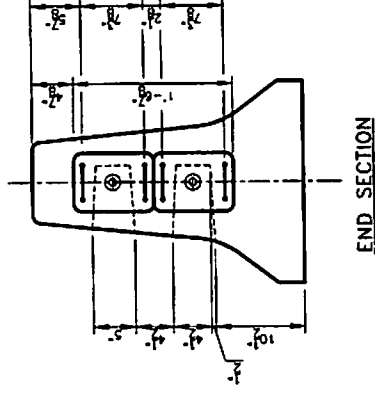
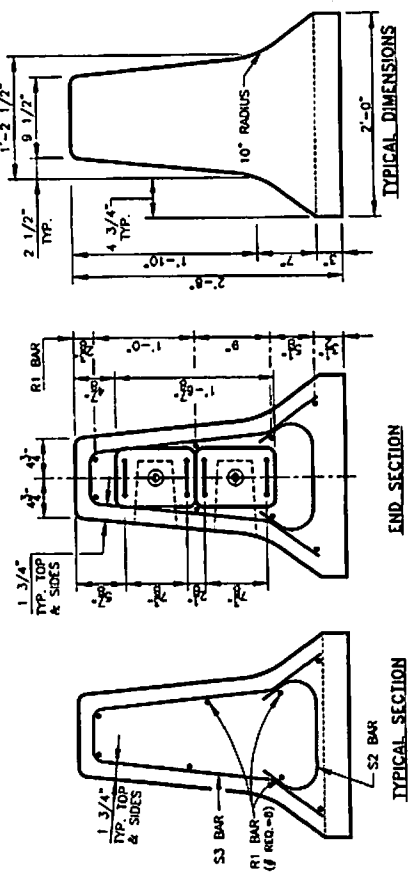
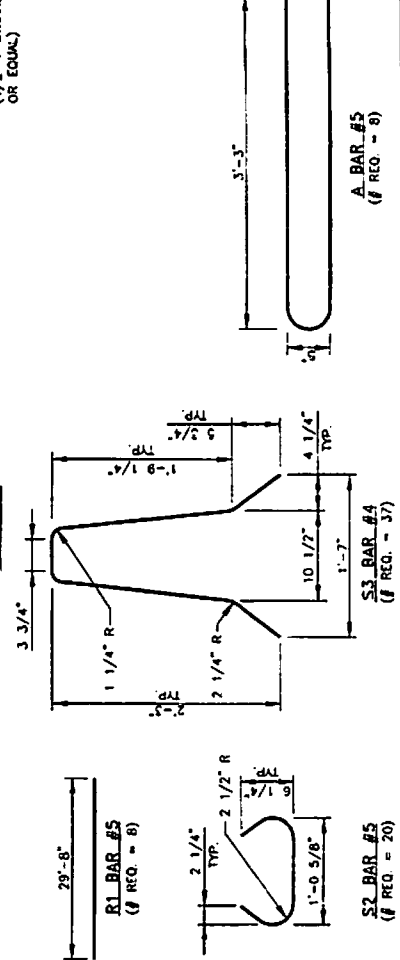
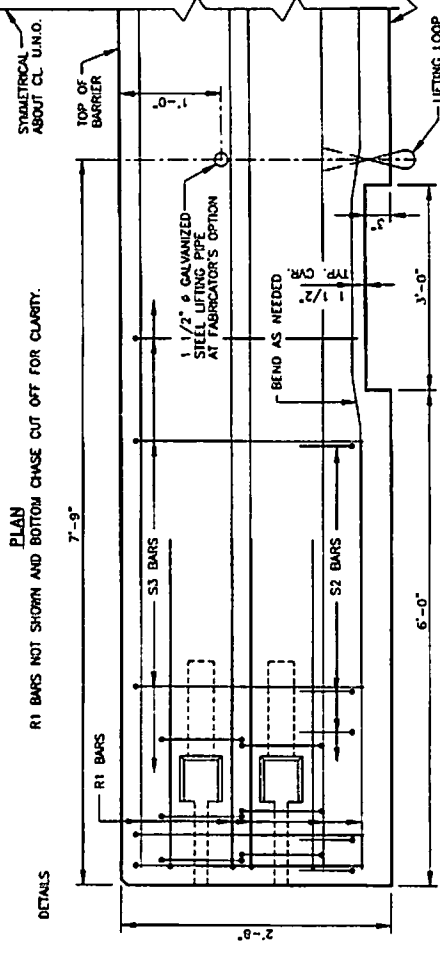
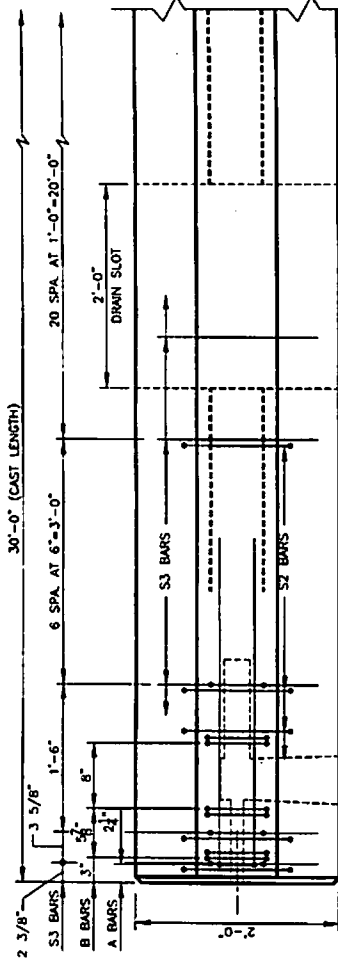


CONTRACTOR

COUNTY

#XXXX



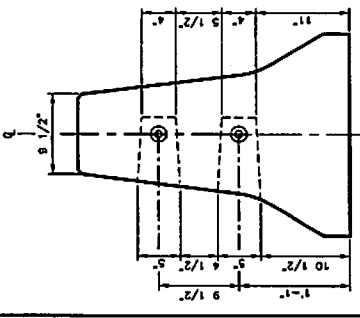
- NOTES
1. ALL REINFORCING STEEL SHALL BE GRADE 60.
 2. CHAMFER ALL EXPOSED CORNERS 3/8" UNLESS OTHERWISE SPECIFIED.
 3. THE CONCRETE SHALL BE CLASS C OR H, UNLESS OTHERWISE SPECIFIED.
 4. INCLUDING CONCRETE COMPRESSIVE STRENGTH 1500 PSI.
 5. MAXIMUM ALLOWABLE CRACK WIDTH SHALL BE 0.003 IN. (SEE ACI 308).
 6. ALL BAR DIMENSIONS ARE CENTERLINE TO CENTERLINE.

FOR APPROVAL
JULY 03 2008
Bexar Concrete Works I, Ltd.

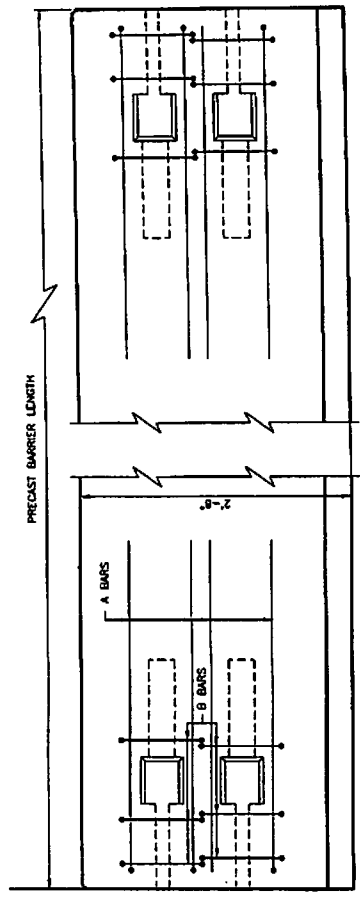
TOTAL NUMBER REQUIRED - XX EACH
TOTAL LINEAR FT. THIS PROJECT - XXX LF

CSB (1)-04 ~ (F-SHAPE)
QUICK-BOLT CONNECTION

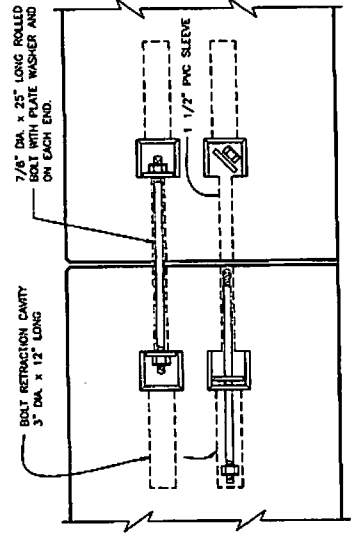
FABRICATOR/PREPARED BY	CONTRACTOR
BEXAR CONCRETE WORKS I, LTD.	BEXAR CONCRETE WORKS I, LTD.
BRN #	XXXX
STATE	MO
DISTRICT	07
COUNTY	XX
SECTION	XX
JOB	XX
JOB	XX
DATE	07-03-08
CHECKED BY	MR
DRAWN BY	AMU
SHEET 1 OF 2	FS-1



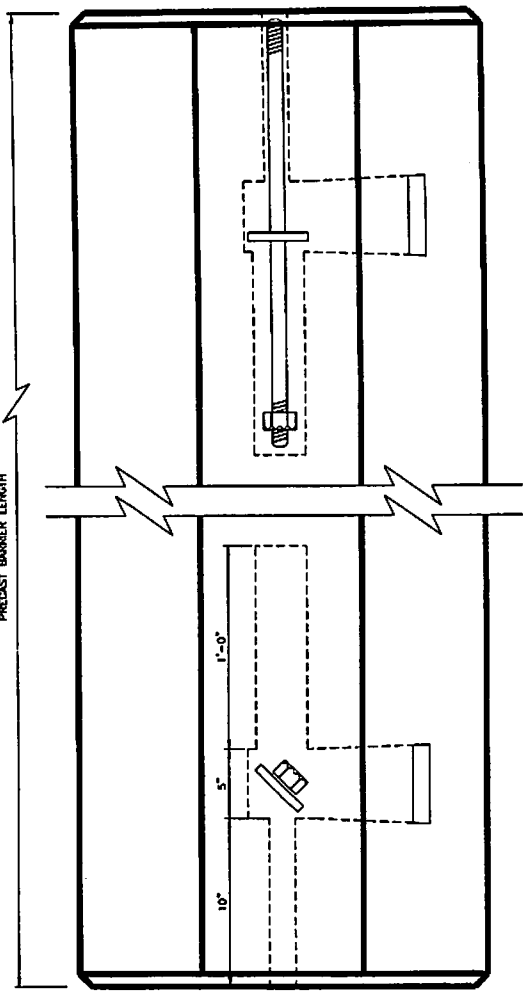
PRECAST BARRIER END VIEW



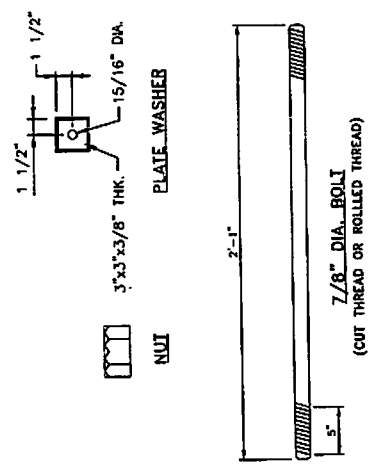
PRECAST BARRIER ELEVATION VIEW
SEE SHEET FS-1 FOR REINFORCING DETAILS



ELEVATION VIEW SHOWING JOINT CONNECTION TYPE "QUICK-BOLT"



TOP VIEW



7/8" DIA. BOLT (CUT THREAD OR ROLLED THREAD)

FOR APPROVAL
JULY 03 2008
Bexar Concrete Works I, Ltd.

TOTAL NUMBER REQUIRED = XX EACH
TOTAL LINEAR FT. THIS PROJECT = XXX LF

CSB (1)-04 ~ (F-SHAPE)
QUICK-BOLT CONNECTION

FABRICATOR/PREPARED BY BEXAR CONCRETE WORKS I, LTD.		CONTRACTOR	
STATE DISTRICT	PROJECT	BR 2007 (677)	ROW #
TEXAS	BR 2007 (677)		XXXX
COUNTY	CONTROL SECTION	JOB	HIGHWAY
BEXAR	XXXX	XXXX	SN 171
DRAWN BY	CHECKED BY	DATE	SHEET 2 OF 2
AMU	AMU	07-03-08	FS-2

NOTES:
1. FOR ALL DETAILS AND NOTES NOT SHOWN
SEE OTHER SHEET.