

Steel Barrier Segment

SAFE BARRIERS

www.safebarriers.com

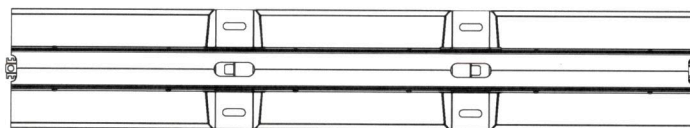
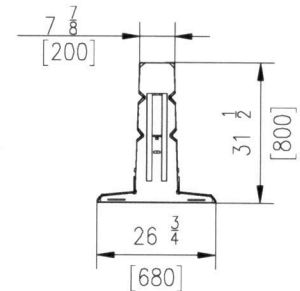
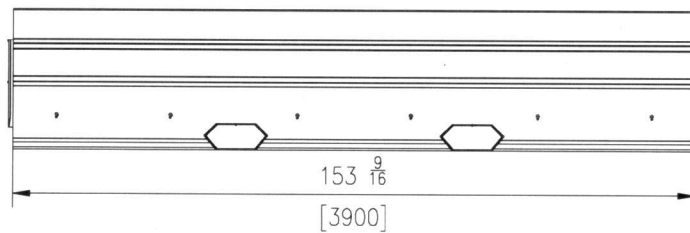
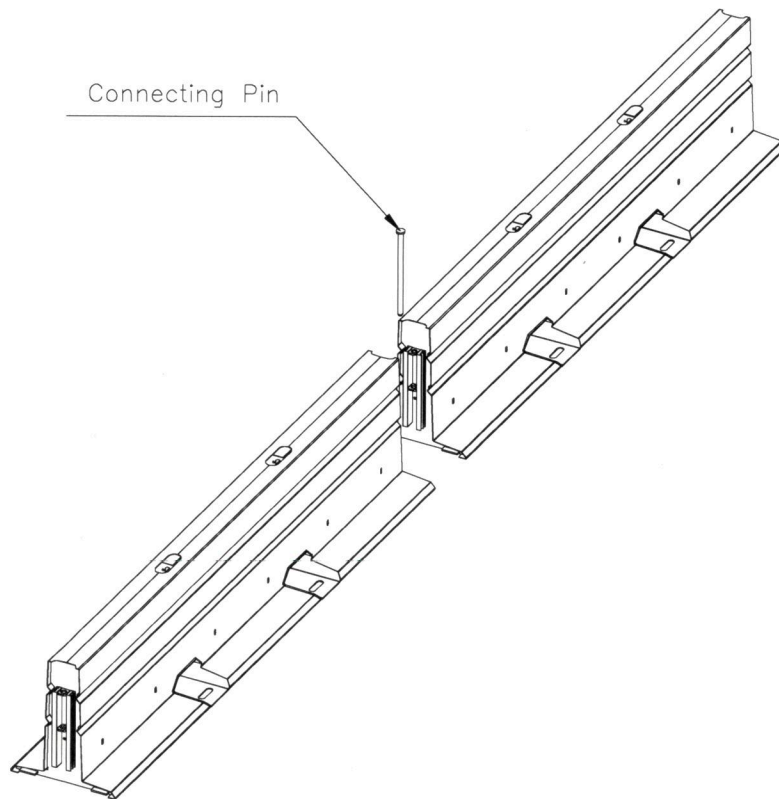
D70

SHEET NO.

DATE:

1 of 6

02/06/17



Steel Barrier Segments Connection

SAFE BARRIERS

www.safebarriers.com

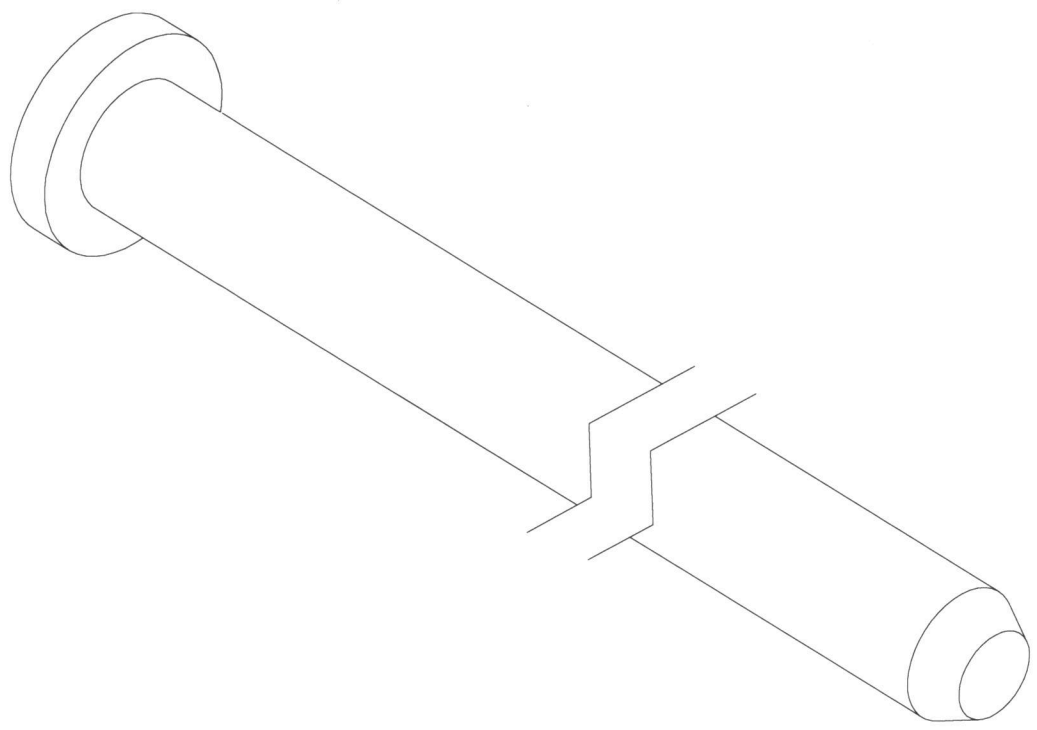
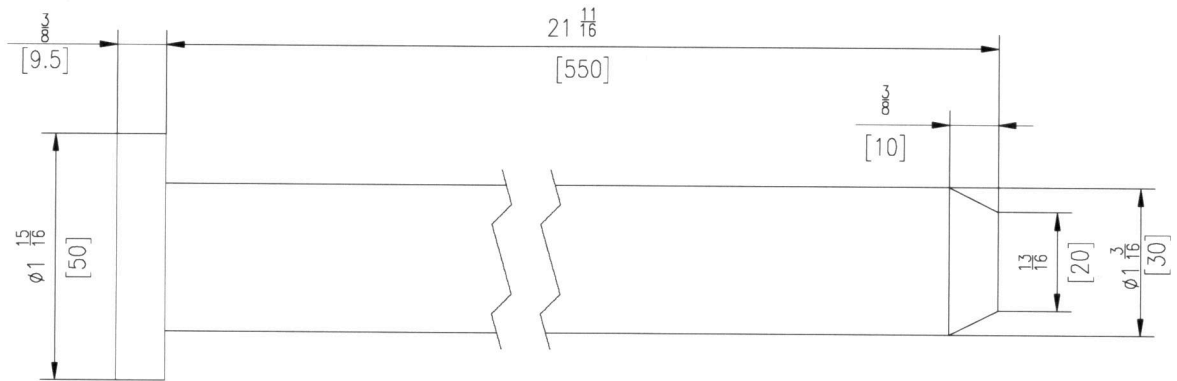
D70C

SHEET NO.

DATE:

2 of 6

02/06/17



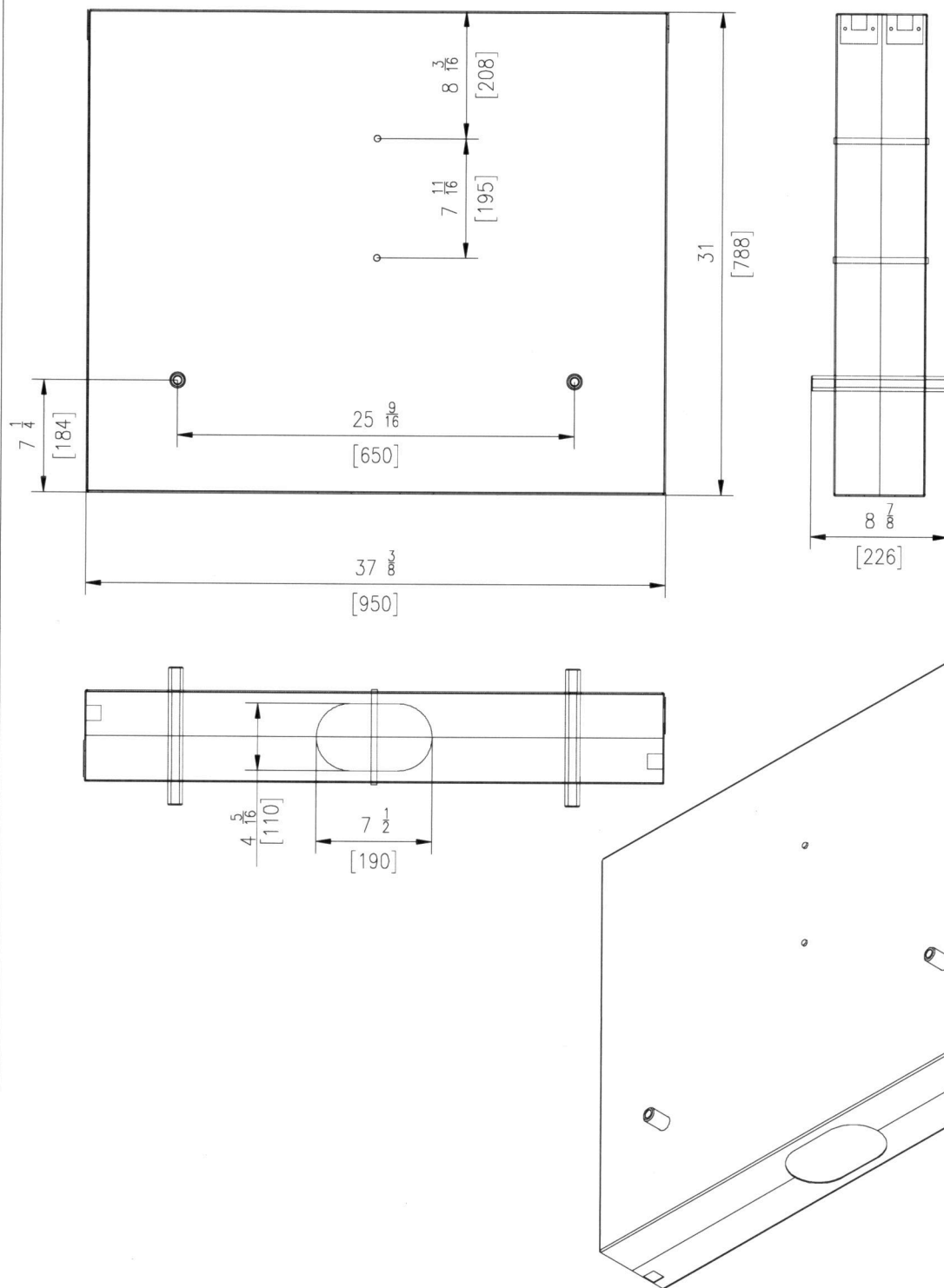
Connecting Pin

SAFE BARRIERS

www.safebarriers.com

D10

SHEET NO.	DATE:
3 of 6	02/06/17



Ballast Box

SAFE BARRIERS

www.safebarriers.com

D8

SHEET NO.

DATE:

4 of 6

02/06/17

INTENDED USE

The Defender Barrier™ 70 Test Level 2 Steel Temporary Barrier is designed to be used in work zones in Highway, Arterial, Collector and Local Roads where construction speed limits are 70km/hour (43.7mph) or less.

The Defender Barrier™ 70 is a free standing, ballasted temporary longitudinal barrier that provides positive protection for both construction workers and motorists driving through these lower speed work zone.

The Defender Barrier™ 70 is made up of 3 primary components, the main Defender Barrier™ body, three (3) ballast boxes filled with concrete and one (1) connecting pin. The Defender Barrier™ 70 is compatible with the ABSORB 350® Crash Cushion

APPROVALS

The Defender Barrier™ 70 Steel Temporary Barrier has been fully testing in conformance with MASH Test Level 2 guidelines

FHWA Acceptance Letter: TBD

CONTACT INFORMATION

Safe Barriers Pte. Ltd.
PO Box 148, Novena Post Office
Singapore 913017

www.safebarriers.com

Tel: +65 3159 1857

Email: info@safebarriers.com



Defender Barrier™ 70

D70

SHEET NO.

DATE

5 of 6

2 June 2017

SAFE BARRIERS

www.safebarriers.com

SPECIFICATIONS

COMPONENTS

Effective Unit Barrier Length 153.5" (3900 mm)

Description	Material	Quantity
Defender Barrier™ Main Body		1
Ballast Box	Q235B	3
Concrete Ballast	M25 Grade Concrete	0.1m ³ per box
M16 Bolts	G8.8	12
Connecting Pin	Q235B	1

Defender Barrier™ 70

D70

SHEET NO.

DATE

6 of 6

2 June 2017

SAFE BARRIERS

www.safebarriers.com