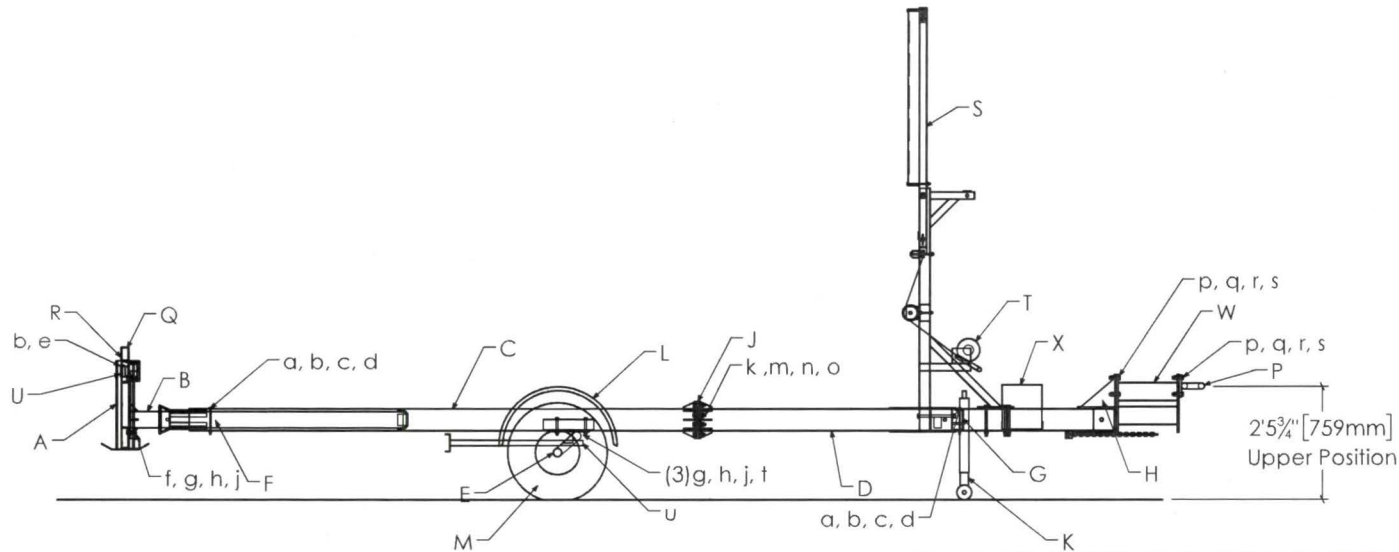
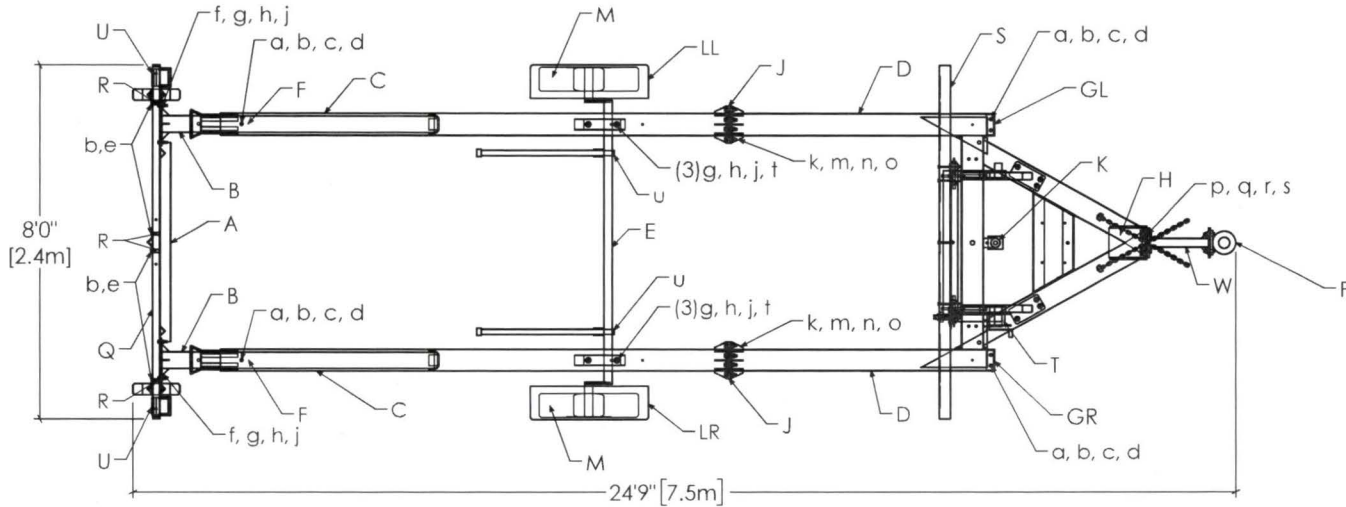


ITEM	QTY	DESCRIPTION	ITEM	QTY	DESCRIPTION	ITEM	QTY	DESCRIPTION
a	6	5/16" x 7" Grd 5 Hex Bolt	h	12	1/2" Heavy Lock Washer	q	8	5/8" Washer
b	10	5/16" Washer	j	12	1/2" Grd 5 Hex Nut	r	8	5/8" Heavy Lock Washer
c	6	5/16" Heavy Lock Washer	k	16	9/16" x 3" Grd 5 Hex bolt	s	8	5/8" Grd 5 Hex Nut
d	6	5/16" Grd 5 Hex Nut	m	16	9/16" SAE Washer	t	4	1 1/2" Plastic Locking Plug
e	4	5/16" Tech Screws	n	16	9/16" Heavy Lock Washer	u	2	Square Tubing Plug
f	8	1/2" x 2.25" Grd 5 Hex Bolt	o	16	9/16" Grd 5 hex Nut			
g	20	1/2" Washer	p	8	5/8" x 2 1/2" Grd 5 Hex Bolt*			

ITEM	QTY	DESCRIPTION
A	1	Impact Head
B	2	Bursting Mandrel
C	2	First Tube
D	1	Trailer Frame
E	1	Axle Assembly
F	4	Plastic Guide Plates
G	2	End caps (R-right, L-left)
H	1	Hitch Assembly
J	8	Spacer
K	1	Commercial Jack
L	2	Fender Assembly (R-right, L-left)
M	2	Tire and Rim
P	1	Lunette (8 tons)
Q	1	Light Bar
R	4	Light Bar Mounting Bracket
S	1	Arrowboard and Stand (Optional)
T	1	Winch (Optional)
U	2	Whelen Lights (Optional)
V	1	Steel Ballast Plate (Optional)
W	1	Hitch Extension (Optional)
X	1	Battery Box (Optional)



REV	DESCRIPTION	DATE
A	ADDED TOLERANCE AND FINISH DETAILS	06/21/2018
B	ADDED LIGHT BAR MOUNTING BRACKET, 5/16\" TECH SCREW, AND 1/2\" WASHERS	09/27/2018
C	ADDED SIGNSTAND AND ARROWBOARD, HITCH EXTENSION, LIGHT BAR, WHELEN LIGHTS, BATTERY BOX, WINCH	09/27/2018

UNLESS OTHERWISE SPECIFIED:  
 DIMENSIONS ARE IN INCHES  
 SURFACE: HOT DIP GALVANIZED  
 TOLERANCE:  
 LINEAR: ±1/16"  
 BOLT HOLE: +1/16", -0"  
 ANGULAR: ±1°

**Gregory**  
 Gregory Industries, Inc.  
 4100 13th Street, SW  
 Canton, Ohio 44710  
 Phone: 330-447-4800x123

**TTMA-200**  
**Assembly**

Sheet: **100**  
 Date: 1/29/2019  
 Drawing Name: TTMA-200  
 Scale: 1:50  
 By: JMS  
 Rev: