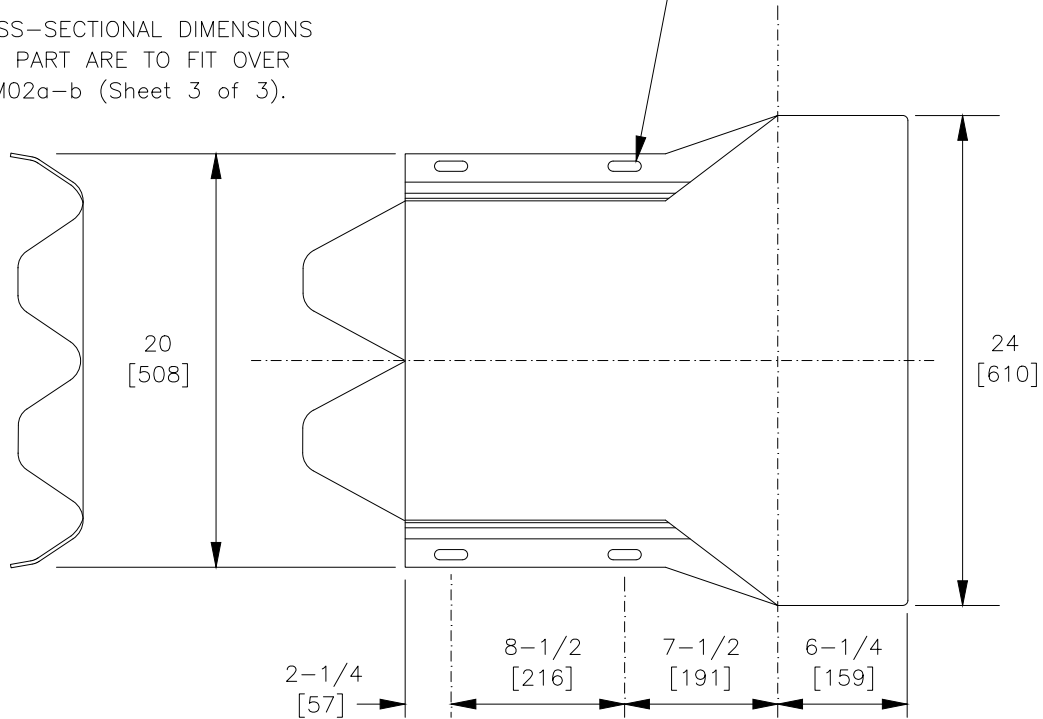


THE CROSS-SECTIONAL DIMENSIONS
FOR THIS PART ARE TO FIT OVER
PART RTM02a-b (Sheet 3 of 3).



DESIGNATOR	BASE METAL THICKNESS	DIAMETER (D)
RTE03a	12 Gage [2.67]	24 [610]
RTE03b	10 Gage [3.43]	24 [610]
RTE04a	12 Gage [2.67]	30 [762]
RTE04b	10 Gage [3.43]	30 [762]

THRIE-BEAM END SECTION (BUFFER)

TE
13

RTE03a-04b

SHEET NO.

DATE

1 of 2

3/12/2025

SPECIFICATIONS

Buffered Thrie-Beam End Sections shall conform to the current requirements of AASHTO M180. RTE03a and RTE04a shall conform to AASHTO M180 Class A, and RTE03b and RTE04b shall conform to Class B.

Dimensional tolerances not shown or implied are intended to be those consistent with the proper functioning of the part, including its appearance and accepted manufacturing practices.

INTENDED USE

RTE03a-04b Buffered End Sections are used in various Thrie-Beam guardrail systems.

CONTACT INFORMATION

Task Force 13 (TF13)
a Non-Profit Association
<https://TF13.org>

THRIE-BEAM END SECTION (BUFFER)

RTE03a-04b

SHEET NO.

DATE

2 of 2

3/12/2025

