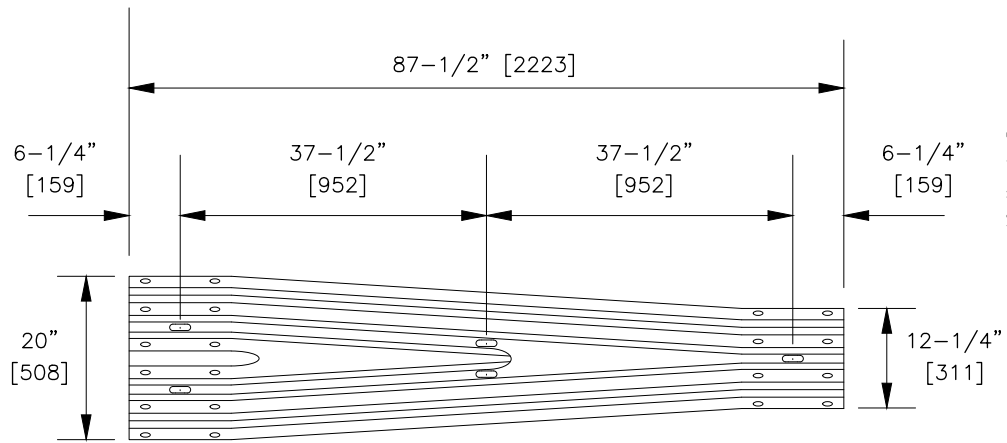


RWTO1a-b
 SHEET NO. 1 of 2
 DATE 6/5/2024

SYMMETRICAL W-THRIE BEAM TRANSITION

Cross-Section Dimensions for this end are the same as Part RTM01a, Sheet 3 of 3.

THRIE-BEAM SECTION VIEW



FRONT ELEVATION VIEW

Cross-Section Dimensions for this end are the same as Part RWM02a-b, Sheet 3 of 3.

W-BEAM SECTION VIEW

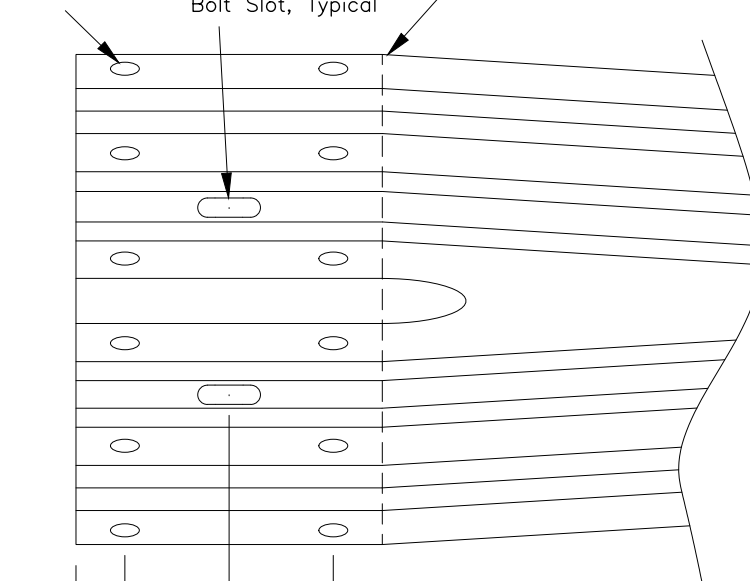


Designator	Base Metal Thickness
RWT01a	12 Gauge [2.67]
RWT01b	10 Gauge [3.43]

29/32"x1-1/8" [23x29] Splice Bolt Slot, Typical

3/4"x2-1/2" [19x64] Post Bolt Slot, Typical

Splice Overlap Shown for Reference

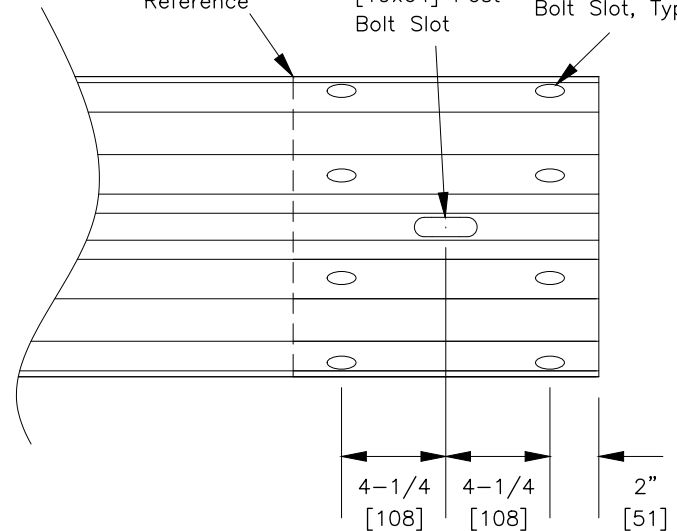


THRIE-BEAM END DETAIL

Splice Overlap Shown for Reference

3/4"x2-1/2" [19x64] Post Bolt Slot

29/32"x1-1/8" [23x29] Splice Bolt Slot, Typical



W-BEAM END DETAIL

SPECIFICATIONS

Corrugated sheet steel beams shall conform to the current requirements of AASHTO M180. RWT01a shall conform to AASHTO M180 Class A, and RWT01b shall conform to Class B.

Dimensional tolerances not shown or implied are intended to be those consistent with the proper functioning of the part, including its appearance and accepted manufacturing practices.

INTENDED USE

RWT01a-b Symmetrical W-Thrie Beam Transition Sections are used in various W- and Thrie-Beam guardrail systems.

CONTACT INFORMATION

Task Force 13 (TF13)
a Non-Profit Association
<https://TF13.org>

SYMMETRICAL W-THRIE BEAM TRANSITION

RWT01a-b

SHEET NO.

DATE

2 of 2

6/5/2024

