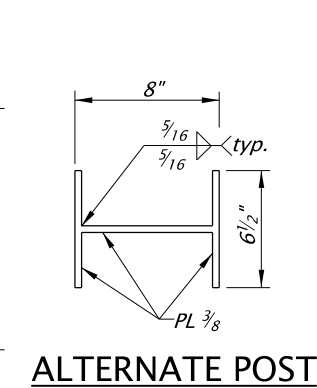
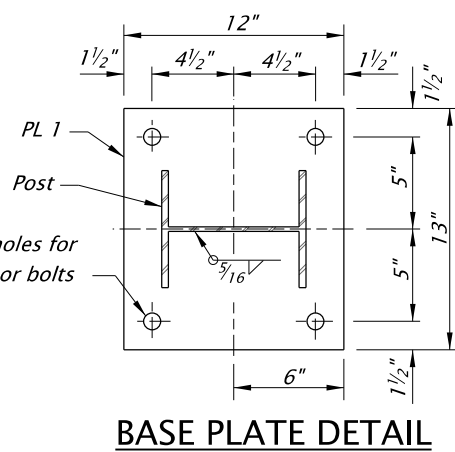
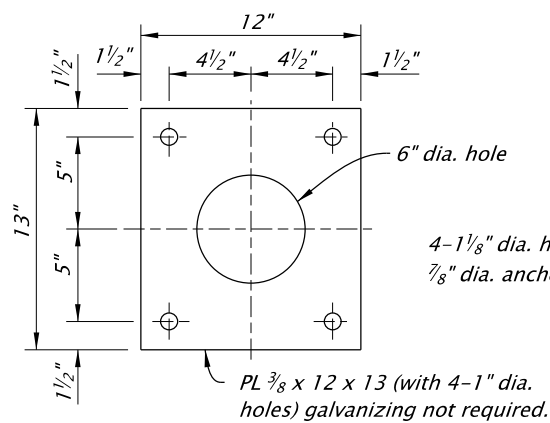
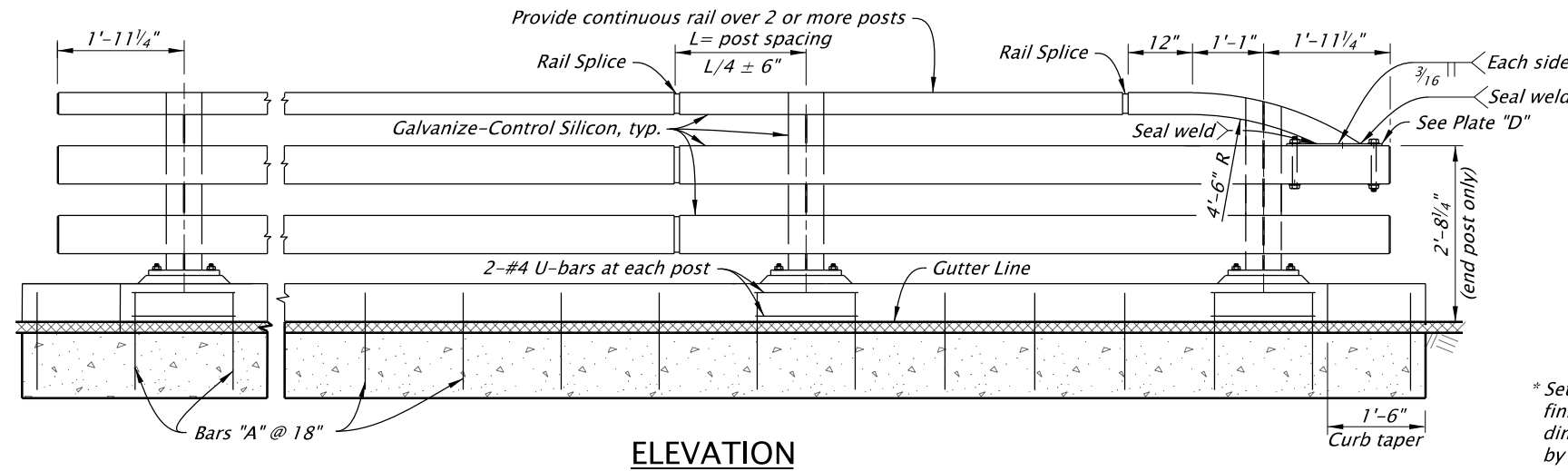
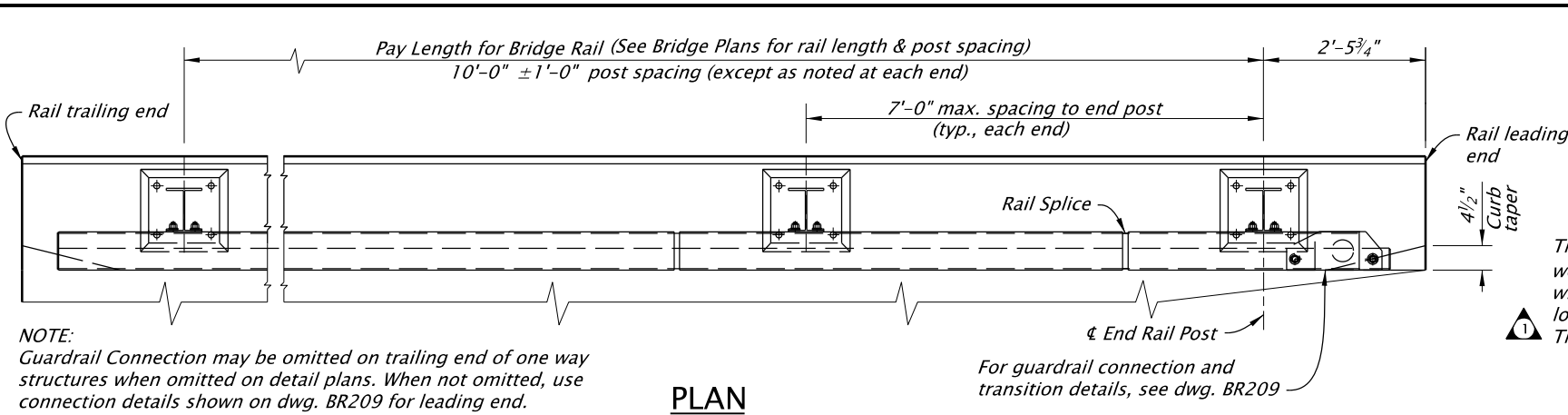


20-JAN-2023

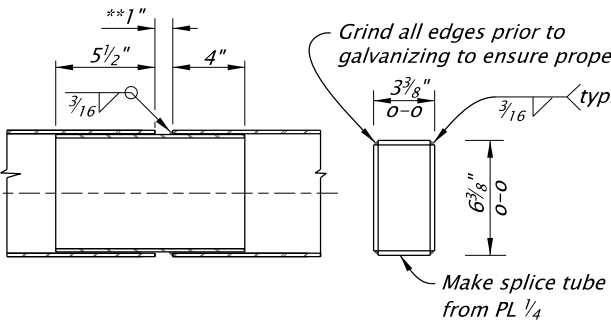
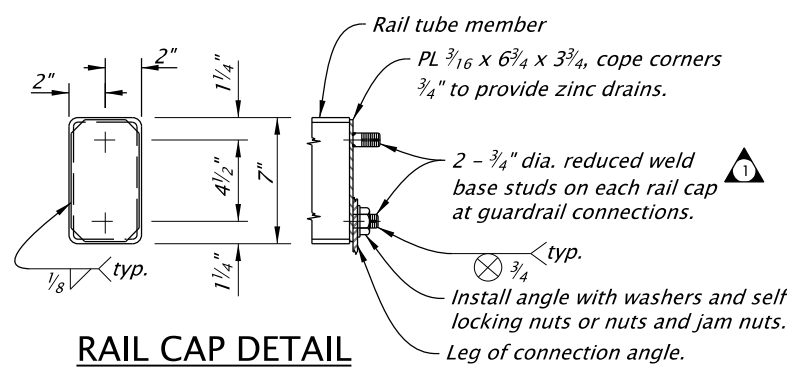
BR208.dgn



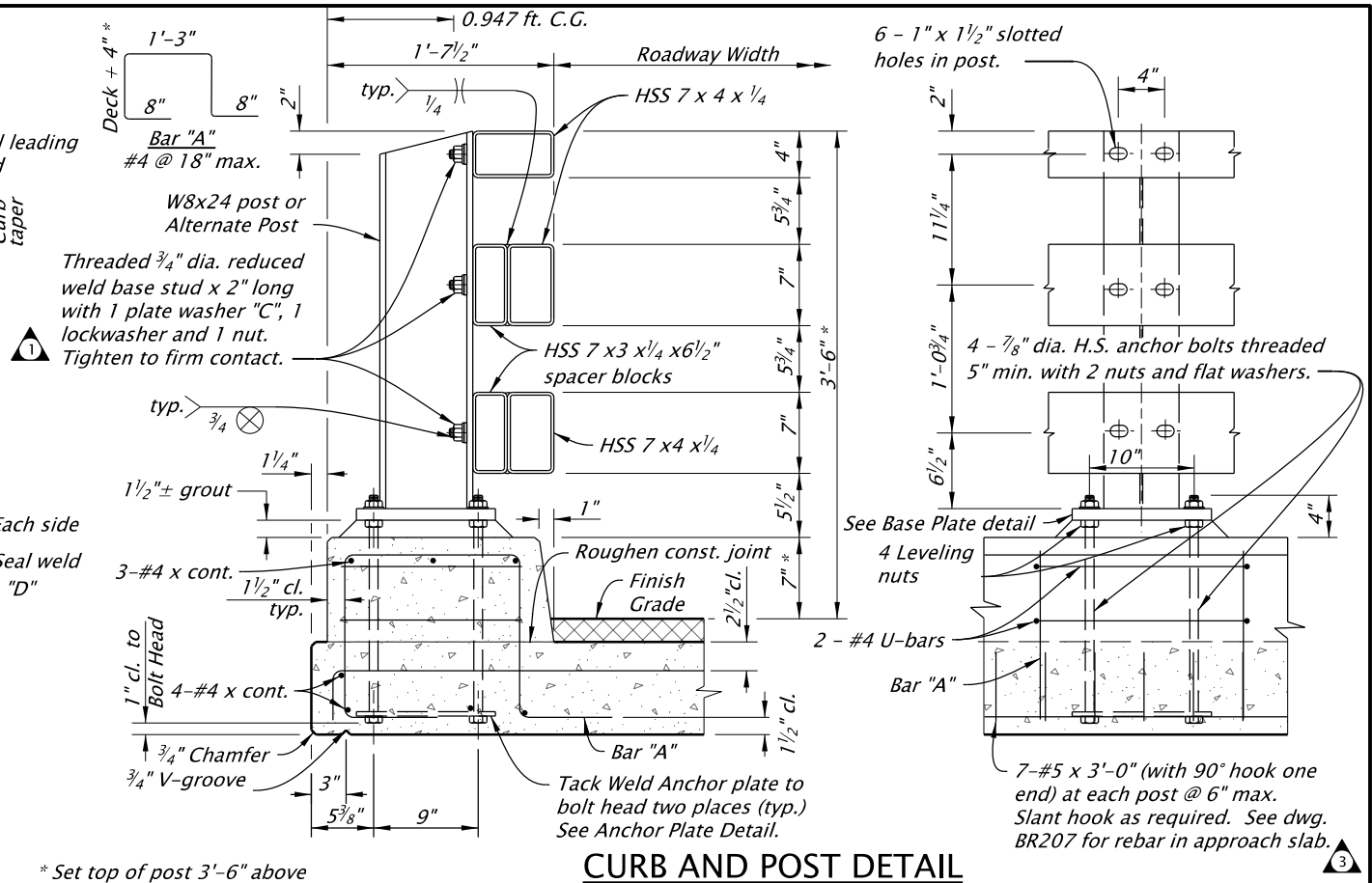
ANCHOR PLATE DETAIL

BASE PLATE DETAIL

PLATE WASHER "C"



RAIL SPLICE DETAIL
**1" gap unless noted otherwise on detail plans. Provide a Rail Splice in panel that has a deck expansion joint. If more than 2" movement needed, increase length of inner member.



- GENERAL NOTES:**
1. Rail designed and crash tested to meet MASH TL-4 requirements. Transition designed to meet MASH TL-3.
 2. Provide structural tubing, steel posts and plates according to Oregon Standard Specification 2810.20.
 3. Provide steel posts and plates conforming to ASTM A572 Grade 50.
 3. Provide High Strength anchor bolts (Grade 105) according to Oregon Standard Specification 02560.30 (b). Tighten top and leveling nuts for the base plate 1/4 turn past snug tight.
 4. Fabricate steel studs with material, welding and inspection according to AWS D1.1.
 5. Provide reinforcing steel conforming to ASTM A706 or AASHTO M31 (ASTM A615) Grade 60.
 6. Provide concrete Class 3300 - 1 1/2" or 3/4"
 7. Construct railing conforming to the horizontal and vertical alignment of the structure. Install posts normal to grade in longitudinal direction and vertical in transverse direction.
 8. Payment for the railing will include compensation for furnishing and installing the necessary guardrail connection plates and terminal connectors.
 9. Hot-dip galvanized structural steel including fasteners after fabrication, except as noted. Provide Galvanize-Control Silicon according to Oregon Standard Specification 02530.70.

Accompanied by dwgs. BR207, BR209

The selection and use of this Standard Drawing, while designed in accordance with generally accepted engineering principles and practices, is the sole responsibility of the user and should not be used without first consulting a Registered Professional Engineer.

All materials shall be in accordance with the current Oregon Standard Specifications.

OREGON STANDARD DRAWINGS

3-TUBE CURB MOUNT RAIL

2024

DATE	REVISION	DESCRIPTION
12-2020	Modified detail note text; added General Note 4; CAD updates	
01-2022	Modified General Note 4, removed "Clause 7" notation.	
01-2023	Revised general notations.	

CALC. BOOK NO. - - -	N/A - - -	SDR DATE - 20-JAN-2023 -	BR208
----------------------	-----------	--------------------------	--------------

Effective Date: December 1, 2023 - May 31, 2024