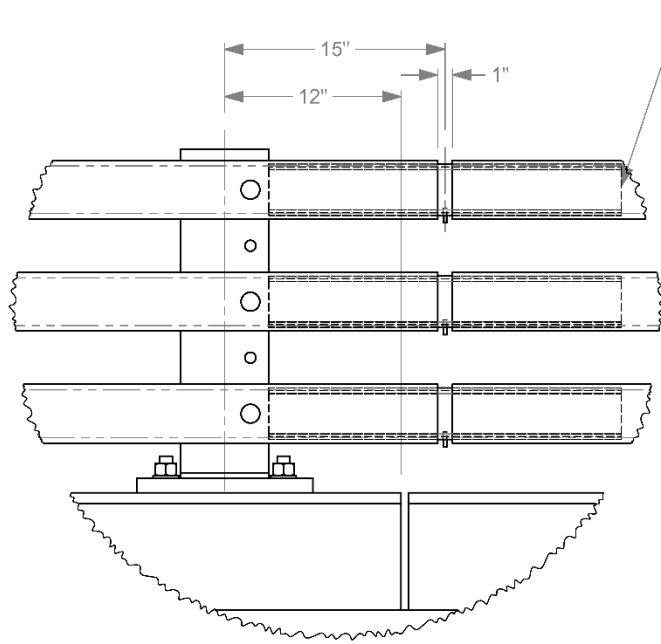
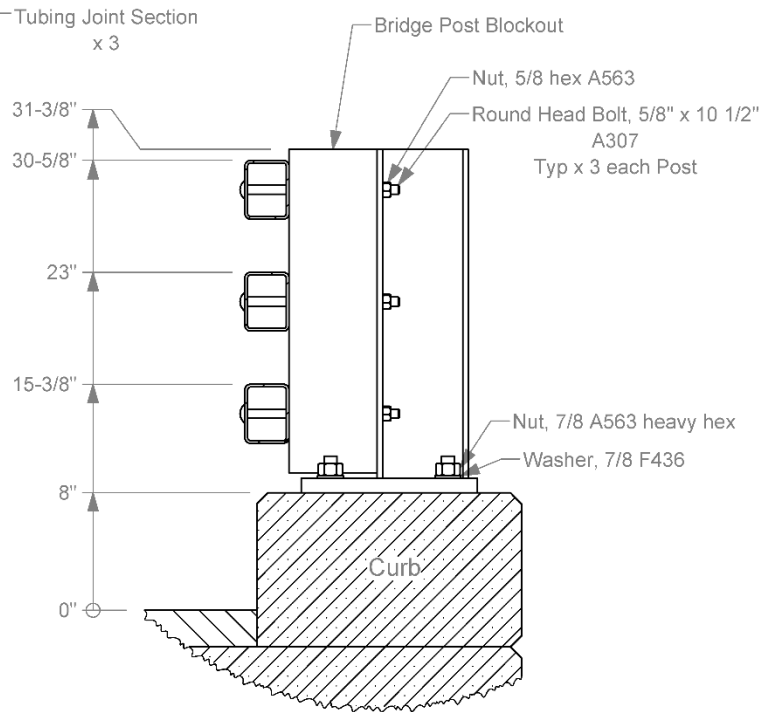


### Detail Views



**Detail C**  
Scale 1 : 10  
Typical at all joints. Thrie-beam rail not shown for clarity.



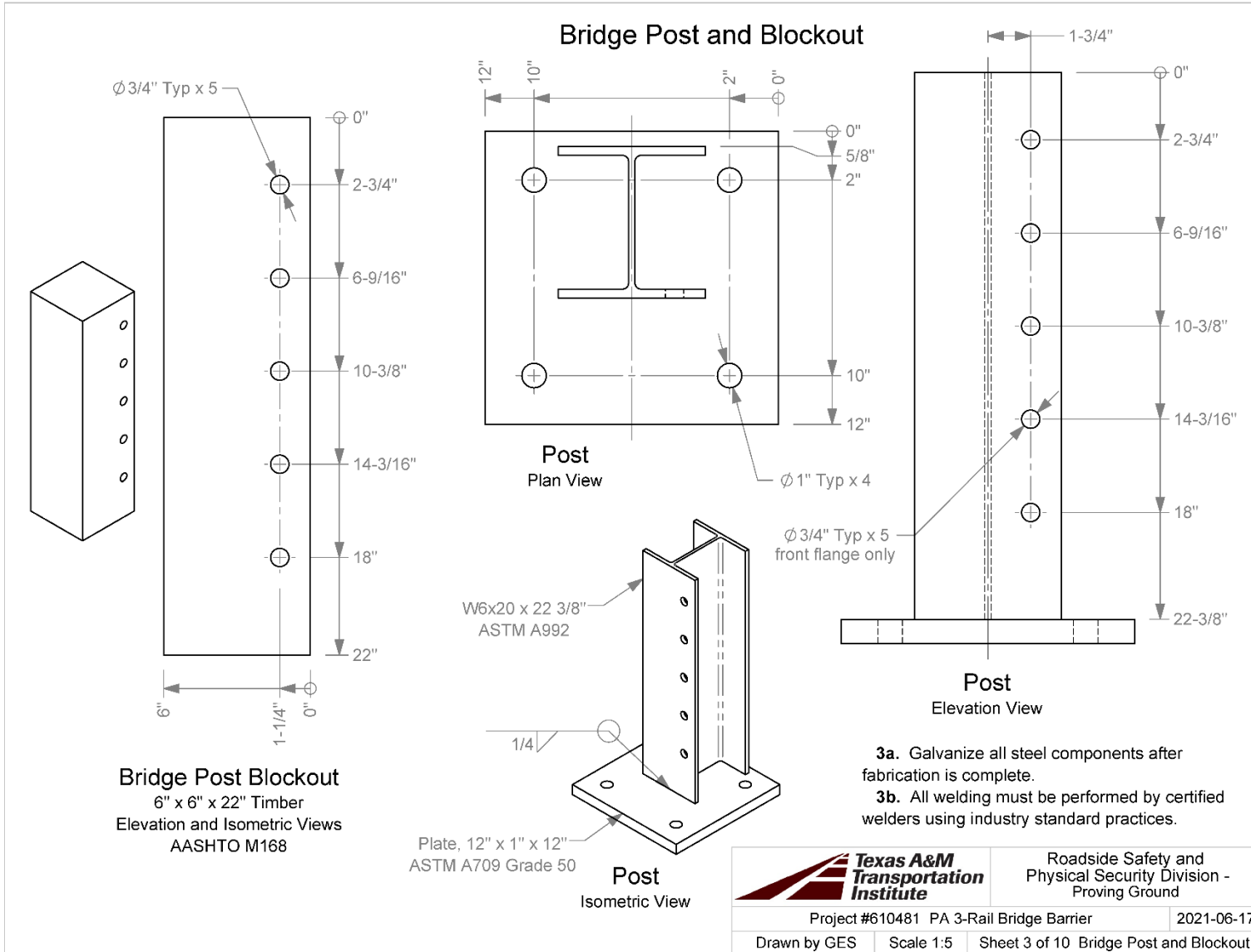
**Detail D**  
Scale 1 : 10

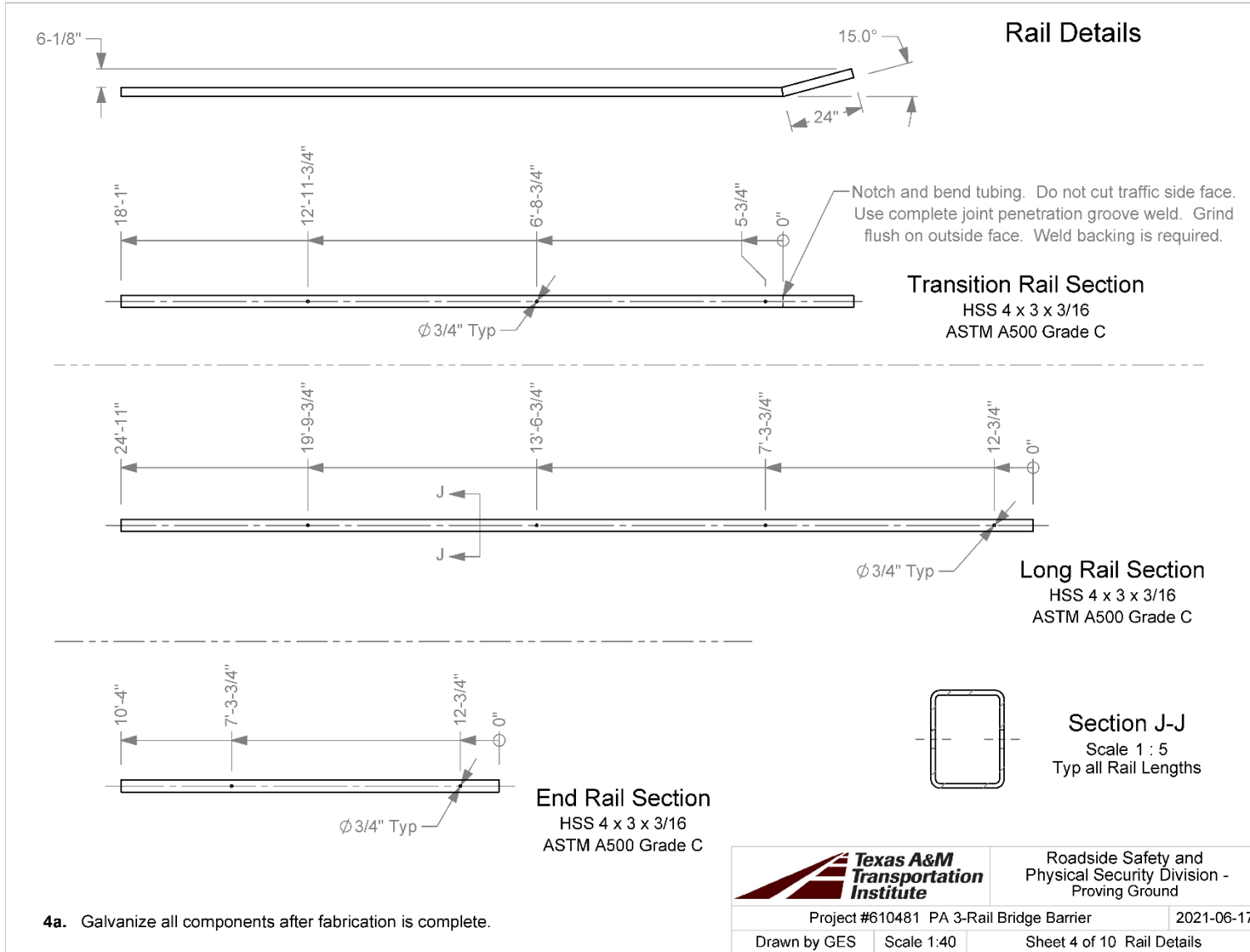
- 2a.** All steel components, including hardware and fabricated components, shall be galvanized.
- 2b.** Threads not shown on Bolts, Threaded Rods, etc. for clarity.



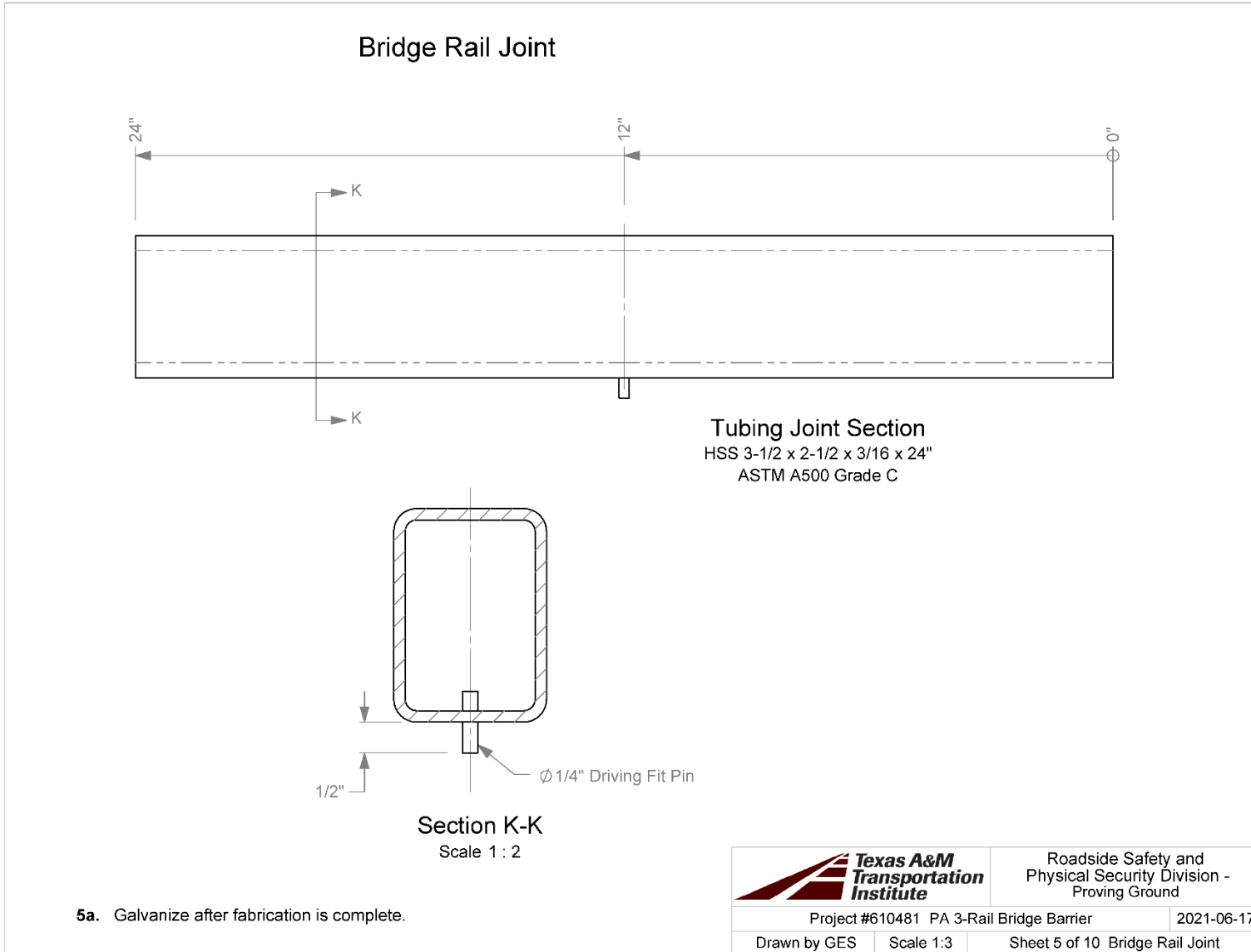
Roadside Safety and Physical Security Division - Proving Ground

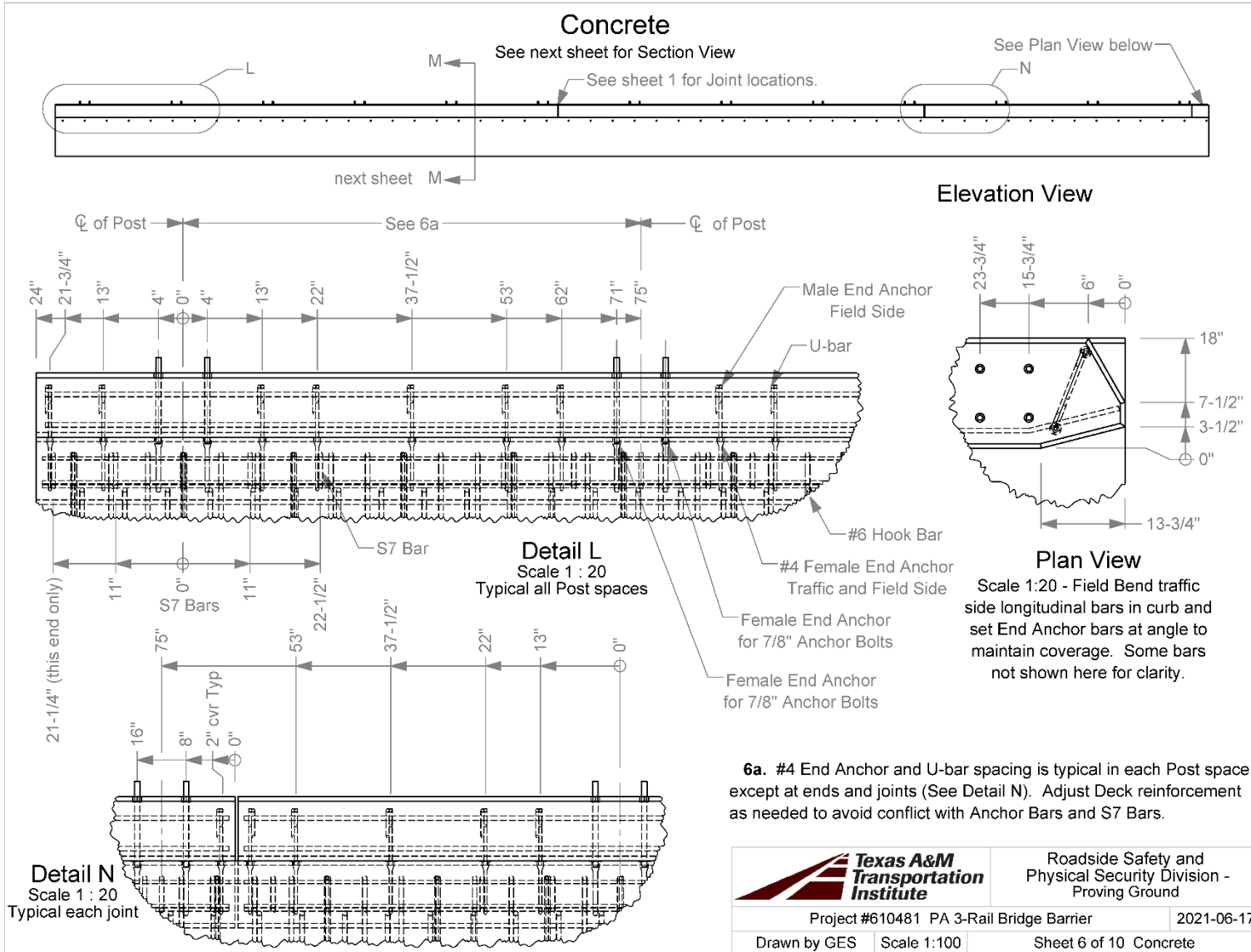
Project #610481 PA 3-Rail Bridge Barrier		2021-06-17
Drawn by GES	Scale 1:120	Sheet 2 of 10 Detail Views

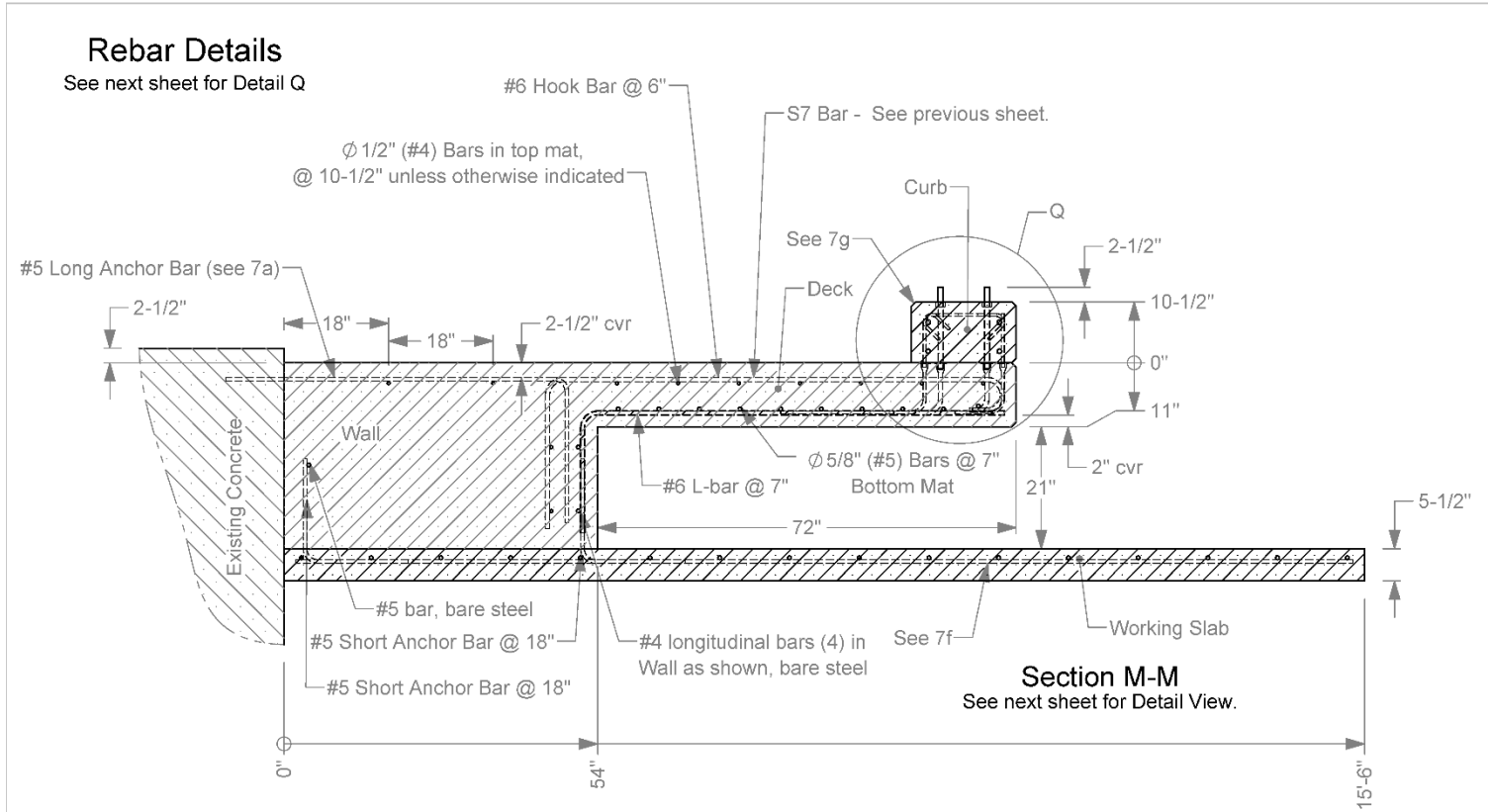





		Roadside Safety and Physical Security Division - Proving Ground
Project #610481 PA 3-Rail Bridge Barrier		2021-06-17
Drawn by GES	Scale 1:40	Sheet 4 of 10 Rail Details

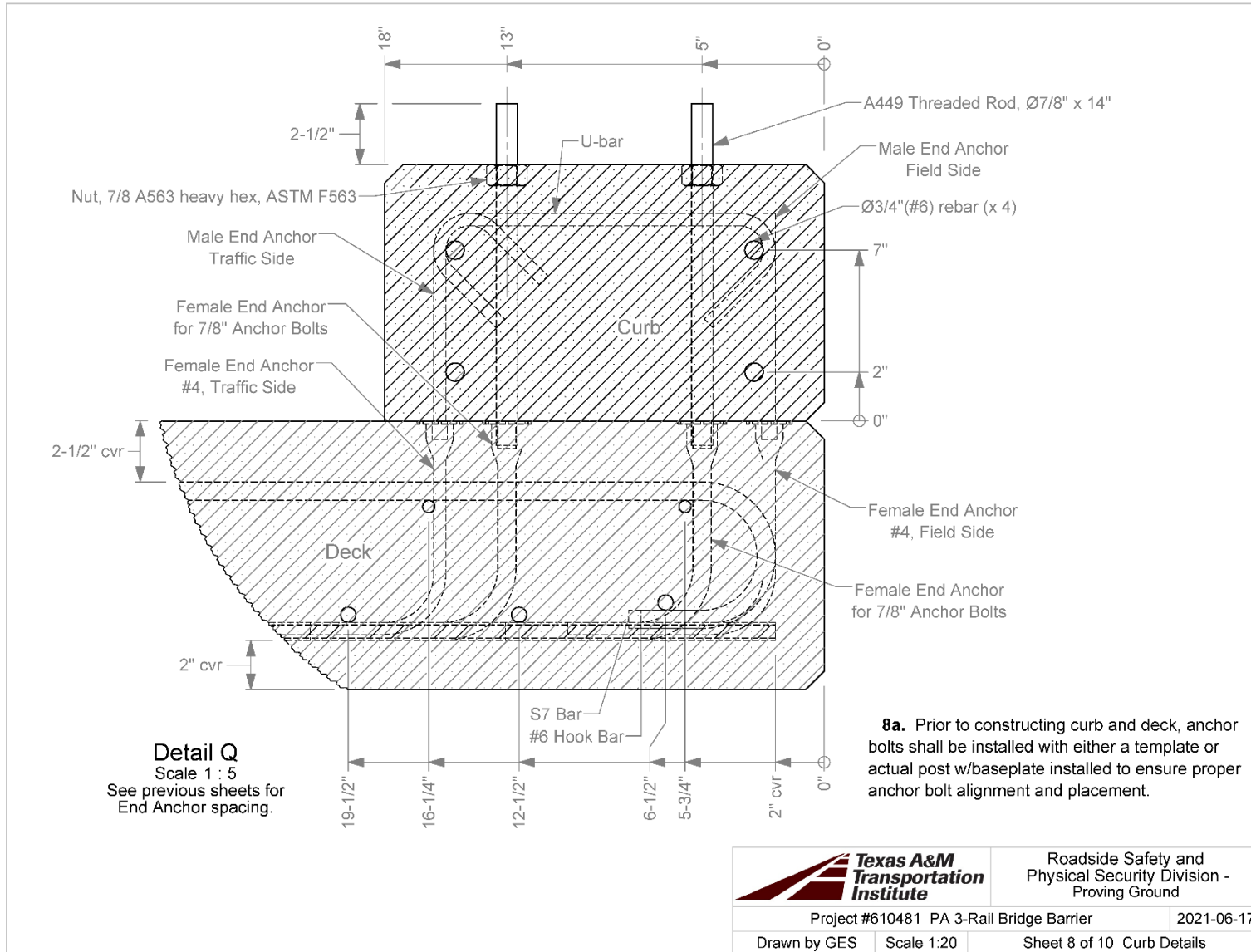




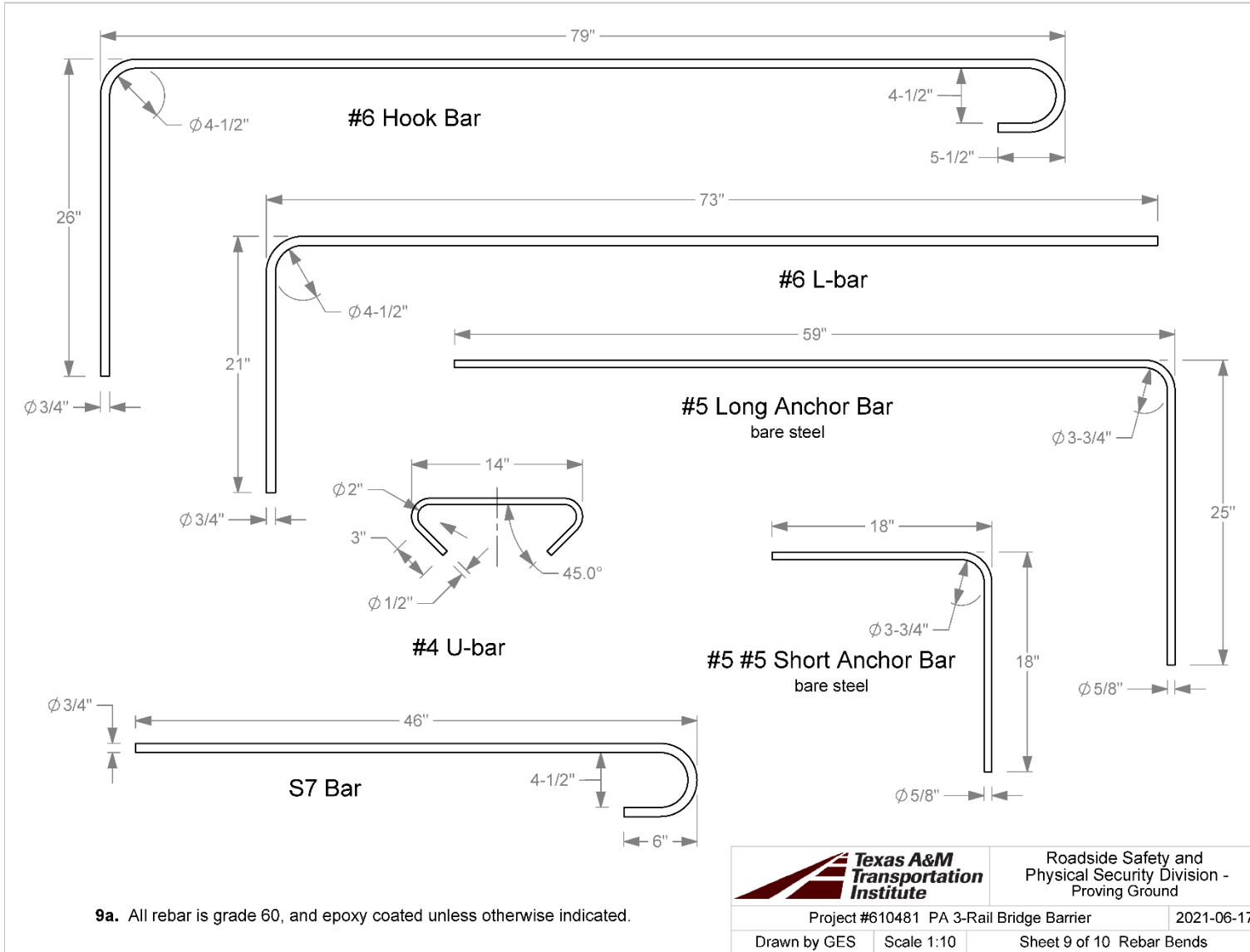


- 7a.** Secure the Anchor Bars in existing concrete with Hilti HIT-RE 500 V3 epoxy according to manufacturer's instructions, @ 18" spacing, with 10" embedment.
- 7b.** Rebar lap is 37" for #6 bars, 31" for #5 bars and 25" for #4 bars.
- 7c.** All rebar is grade 60, and epoxy coated unless otherwise indicated.
- 7d.** The concrete strength shall be as follows: Working Slab: minimum 3000 psi. Wall and Deck: 4000 psi. Curb 3500 psi. Chamfer corners 3/4" each way as shown.
- 7e.** Rebar placement dimensions are to centerline unless otherwise indicated by "cvr" (cover).
- 7f.** One mat of #5 bars @ 12" each way in Working Slab, with 3" cover at bottom.
- 7g.** 1" (3/4" each way) chamfer on edges of Deck and Curb.

		Roadside Safety and Physical Security Division - Proving Ground
Project #610481 PA 3-Rail Bridge Barrier		2021-06-17
Drawn by GES	Scale 1:25	Sheet 7 of 10 Rebar Details





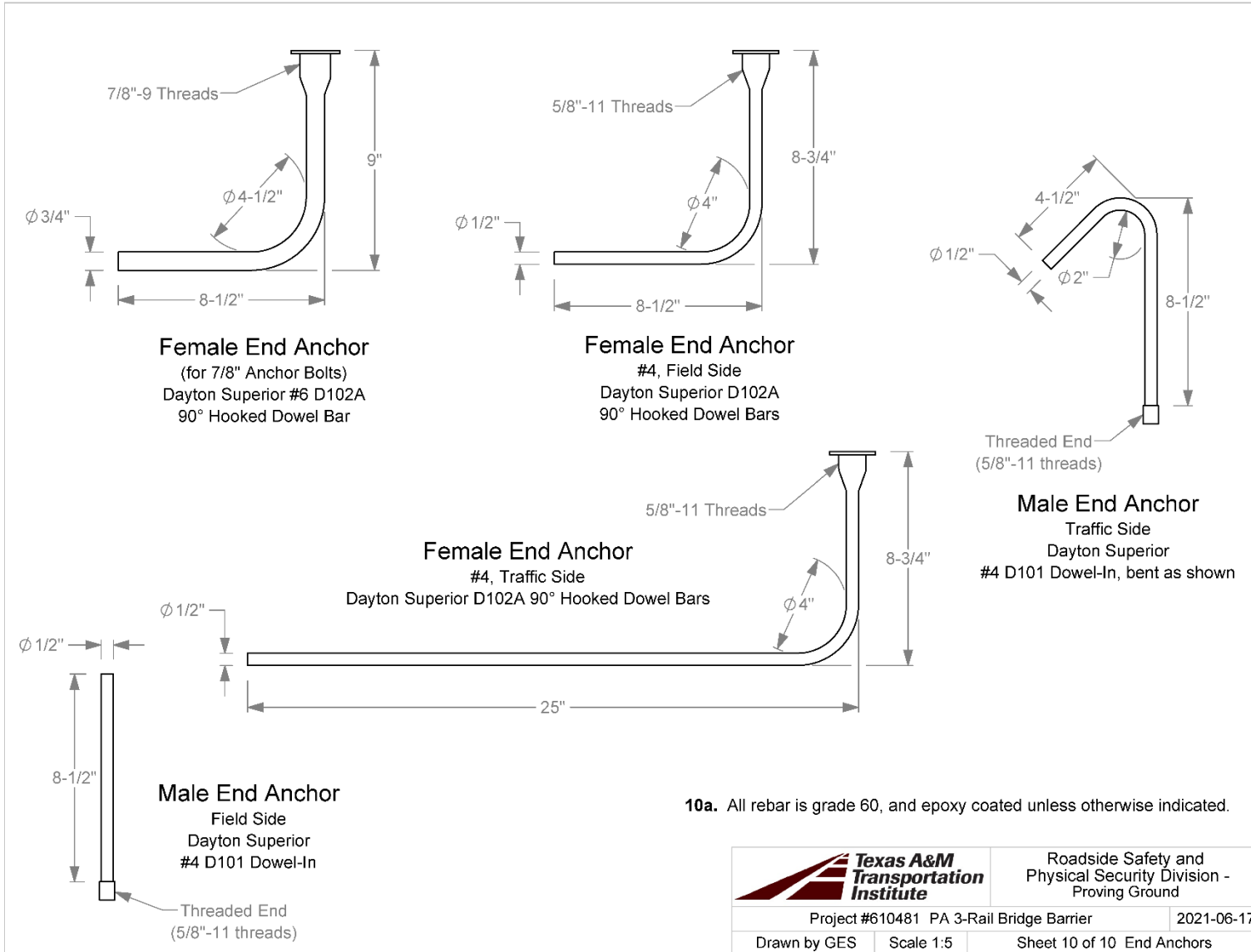



9a. All rebar is grade 60, and epoxy coated unless otherwise indicated.



Roadside Safety and Physical Security Division - Proving Ground

Project #610481 PA 3-Rail Bridge Barrier		2021-06-17
Drawn by GES	Scale 1:10	Sheet 9 of 10 Rebar Bends



		Roadside Safety and Physical Security Division - Proving Ground
Project #610481 PA 3-Rail Bridge Barrier		2021-06-17
Drawn by GES	Scale 1:5	Sheet 10 of 10 End Anchors