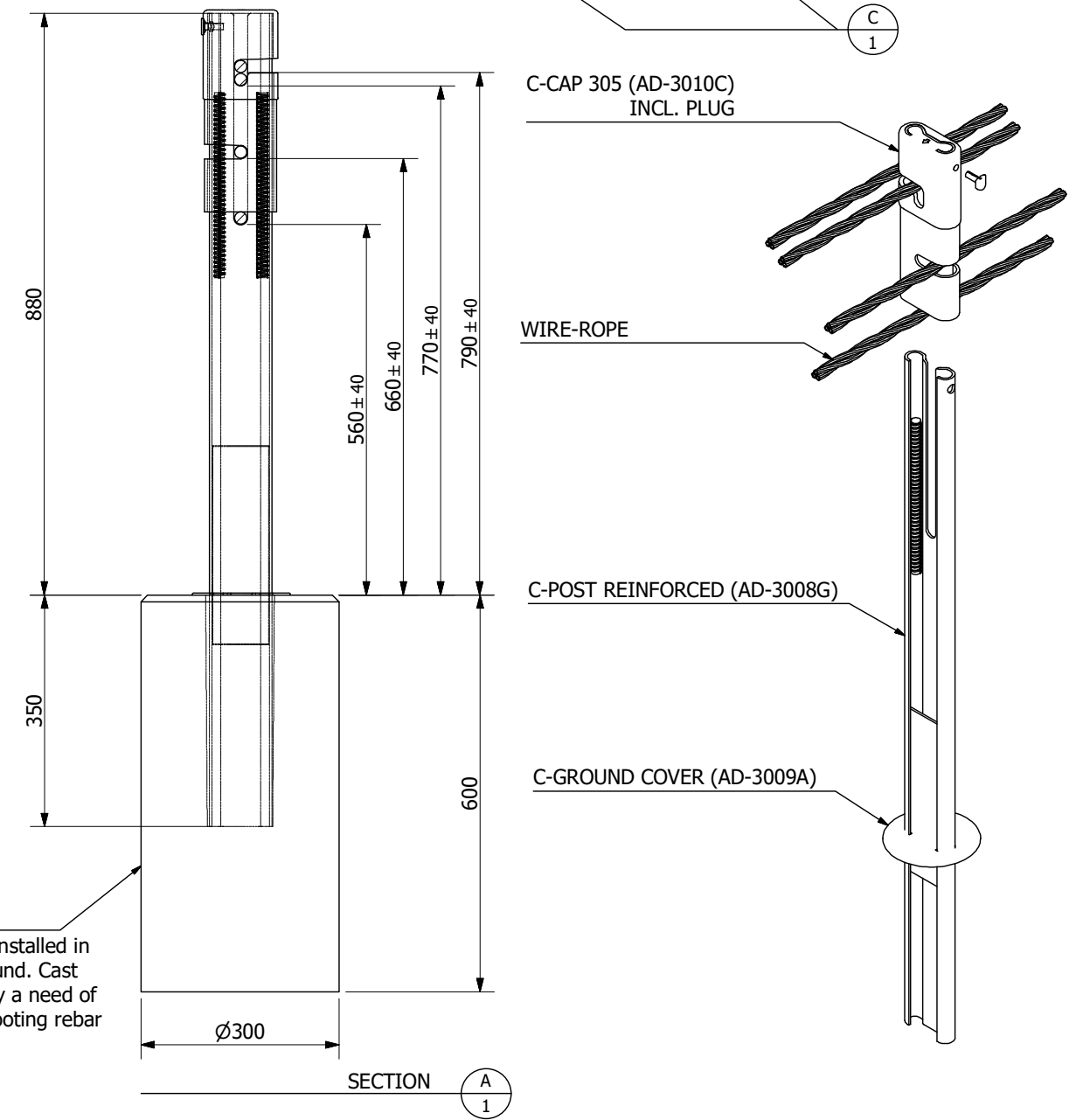
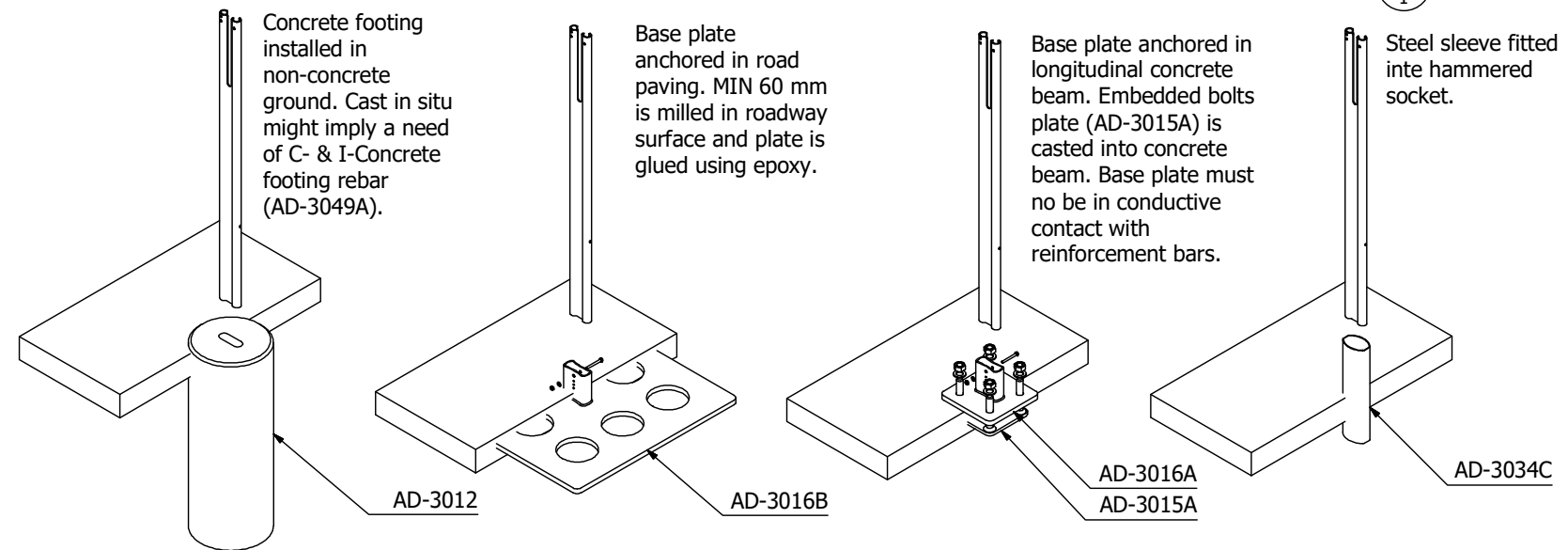


DEPLOYMENT METHODS FOR ALTERNATIVE GROUND CONDITIONS

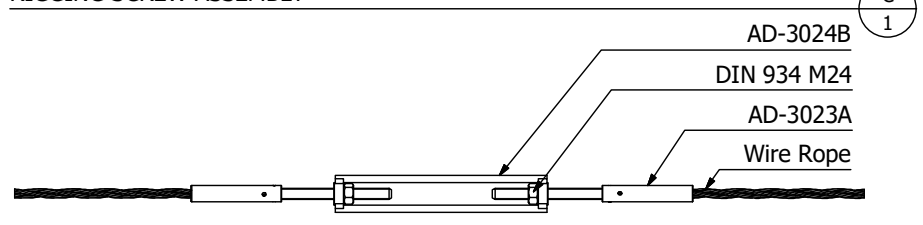


Mounting is generally not recommended in horizontal curves with a radius <400m.

Mounting in vertical curves should not be executed in depressions with a radius <1 200m.

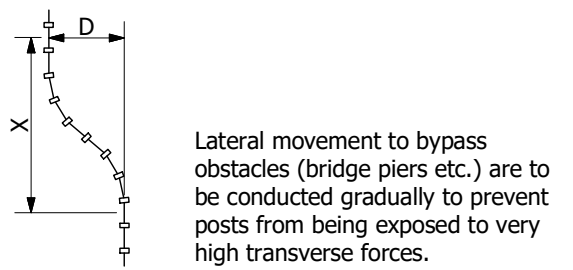
For further enquiries or specific advisement regarding installment or working features of SAFENCE, please contact Blue Systems.

RIGGING SCREW ASSEMBLY



Rigging screws are to be mounted at every linear 300^{+50}_{-0} m and at 150^{+25}_{-0} linear metres from anchoring point.

Wire fittings are swaged into the cables with A-400RS-AV297 and pulled with 070827-03. After tension force according to Tensioning Table T2 is reached, AD-3023A is locked with DIN 934 M24 or equivalent.



Lateral movement, D [m]:	0,5	1,0	1,5	2,0
Transition distance, X [m]:	40	50	60	70

T (°C) ⁺⁵ / ₋₄	F (kN) ±1,5	P (Bar) ±15
-20	37,3	420
-10	34,3	390
0	31,4	350
10	28,4	320
20	25,5	290
30	22,6	250
40	19,6	220
50	16,7	190
60	13,7	150

Drawn DM	Date 2020-07-01	Acceptance Standard MASH16 TL4	Units mm	Sheet size A3
BLUE SYSTEMS		Name SAFENCE 4RC-19 CC3.0		
Fiskebäcks Hamn 16 SE-426 58 Västra Frölunda Sweden		Drawing no. SRB-3012-3.0		Standard Drawing
Tel: +46 31-29 72 16 Fax: +46 31-29 30 65 E-mail: info@bluesystems.se		Sheet 1 / 1		

This drawing is the property of BLUE SYSTEMS AB.
The content must not be copied or made available to any third party without our written permission.